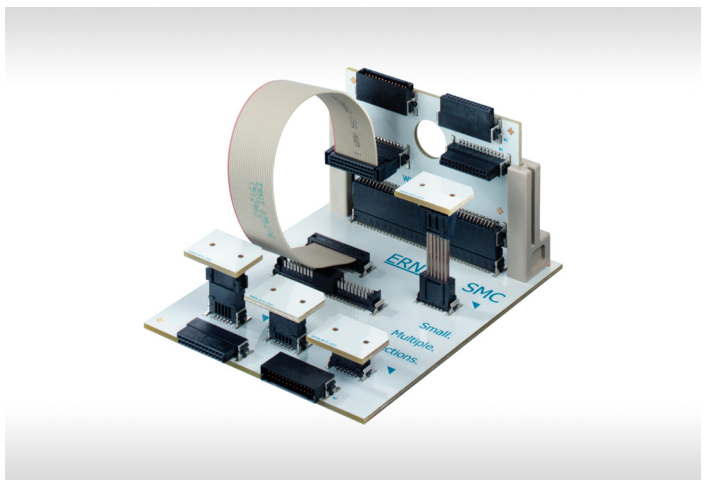
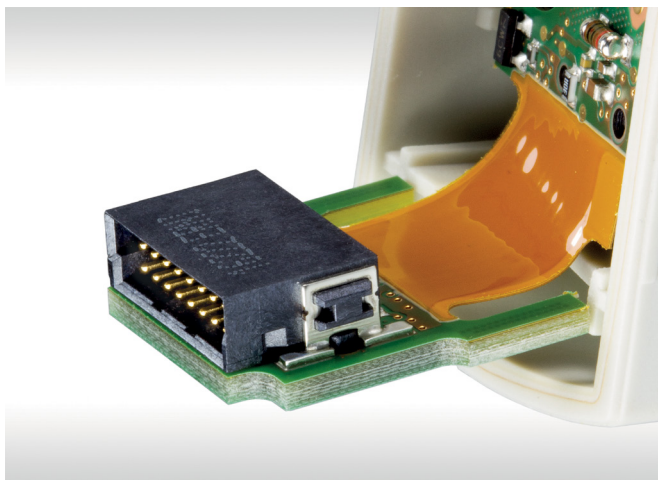
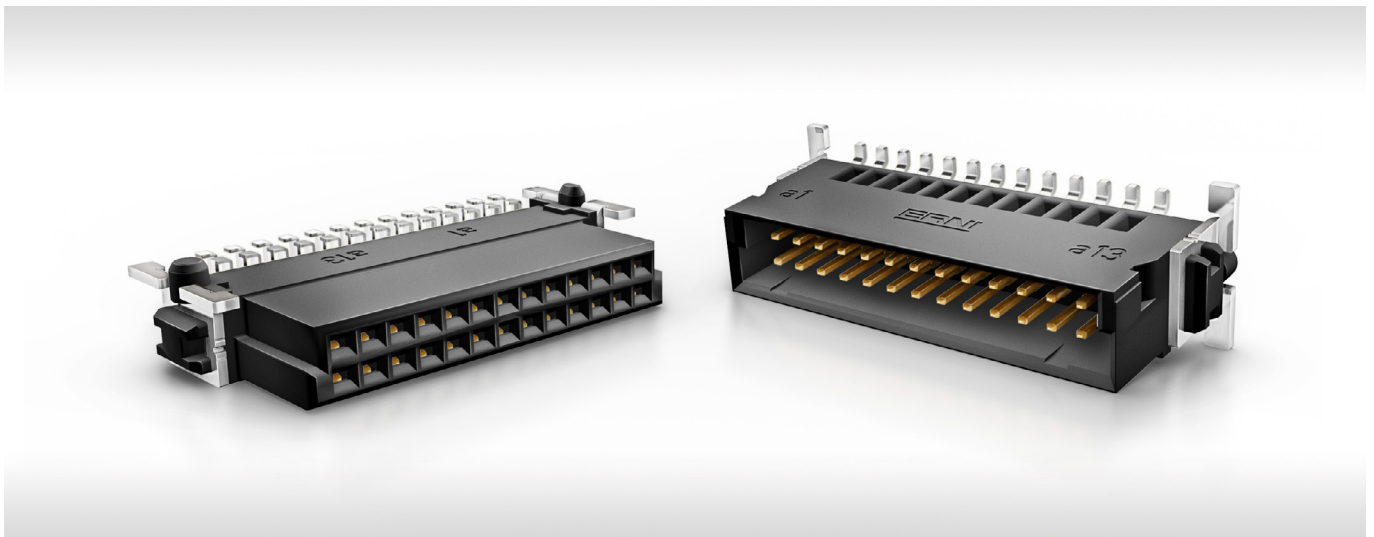


SMC

1.27 mm Connectors



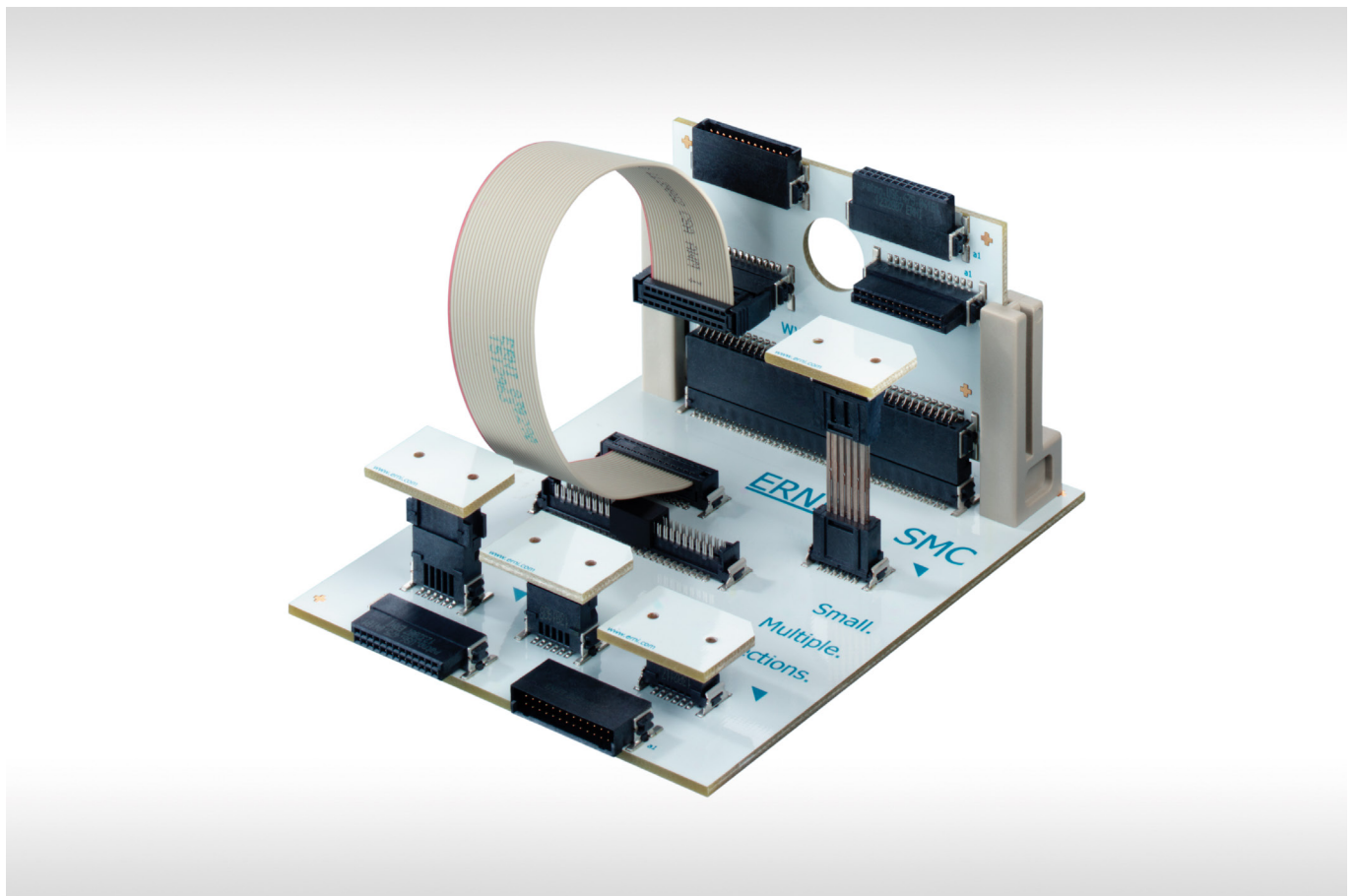
SMC - SMALL GRID, BIG POSSIBILITIES

Limited space and high performance demands are characteristics of many modern electronic systems, all of which the connectors must accommodate. There is a corresponding demand for compact, secure, and reliable connectors, with high signal integrity and a relatively high current-carrying capacity.

The comprehensive SMC range helps meet these requirements. The high-performance SMT connectors come in a number of different designs, heights, and contact densities in a 1.27 mm grid.

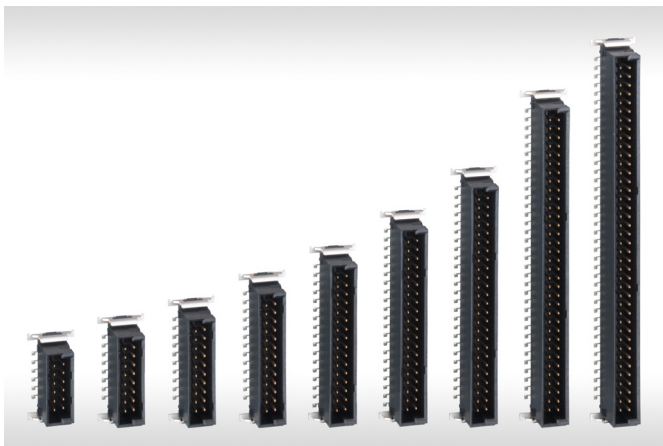
The basic design criteria for the SMC series include double-sided spring contacts for top-rate contact properties and maximum contact reliability, a high-temperature resistant insulator with polarization and insertion chamfers, and a very high mating reliability.

The contact design exhibits a virtually continuous impedance profile and enables secure data transmission rates of up to 3 Gbit/s (differential) if the system is suitably designed.

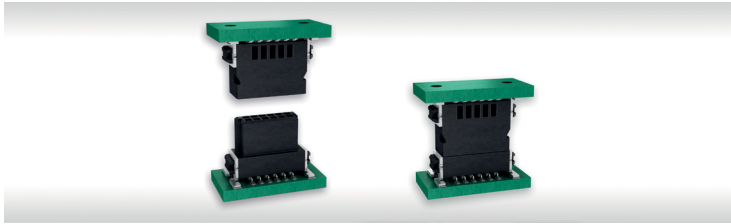


FEATURES

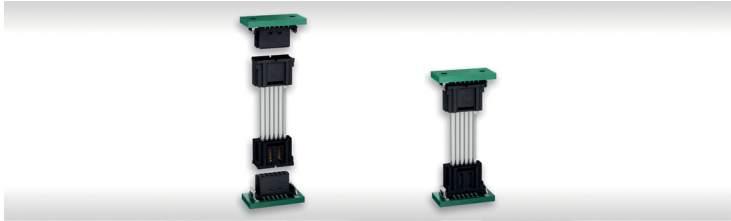
| | |
|------------------------|--|
| Pitch | 1.27 mm |
| No. of Pins | 12, 16, 20, 26, 32, 40, 50, 68, 80 |
| Termination technology | SMT, individual variants in pressfit technology |
| Applications | <p>Data rate up to 3 Gbit/s</p> <p>Current rating up to 1.7 A per contact</p> <p>Board-to-Board connections:</p> <ul style="list-style-type: none"> - stacked (Mezzanine) - orthogonal - coplanar <p>Wire-to-Board connections (ribbon cable):</p> <ul style="list-style-type: none"> - pluggable - permanent |
| Variants | <p>Male connectors, vertical and right angle</p> <p>Female connectors, vertical and right angle</p> <p>Board-to-Board adapter</p> <p>Board-on IDC</p> <p>Cable assembly:</p> <ul style="list-style-type: none"> - Female connectors IDC, right angle |
| Special versions | <p>Lockable connectors</p> <p>Pressfit male connectors</p> <p>Reduced locating pegs / without pegs</p> <p>First mate/early break contacts</p> |



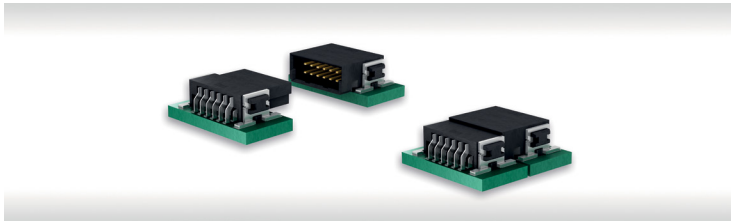
CAPABILITIES



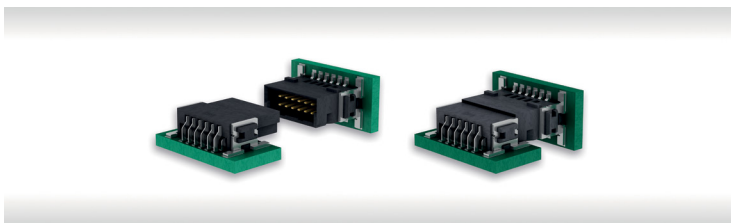
Stacked boards (Mezzanine)



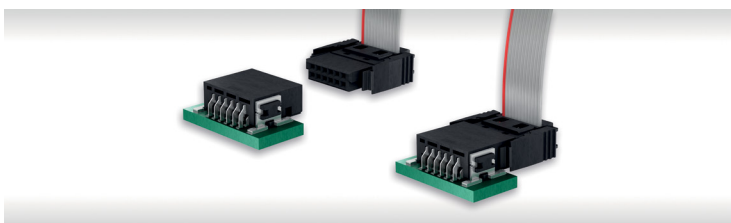
Board-to-Board adapter: enhanced board-to-Board heights



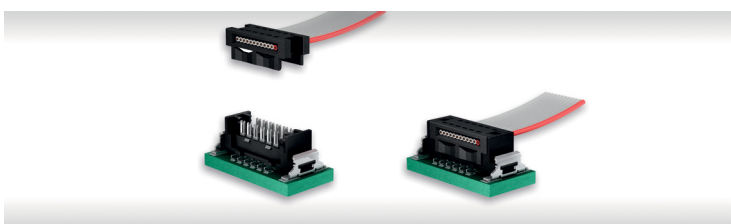
Extender card (coplanar)



Orthogonal boards



Wire-to-Board (pluggable)

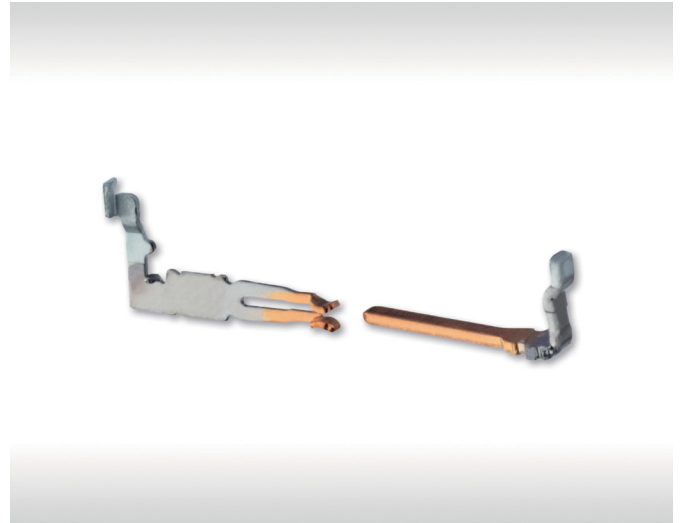


Wire-to-Board (permanent): Board-on IDC

ADVANTAGES

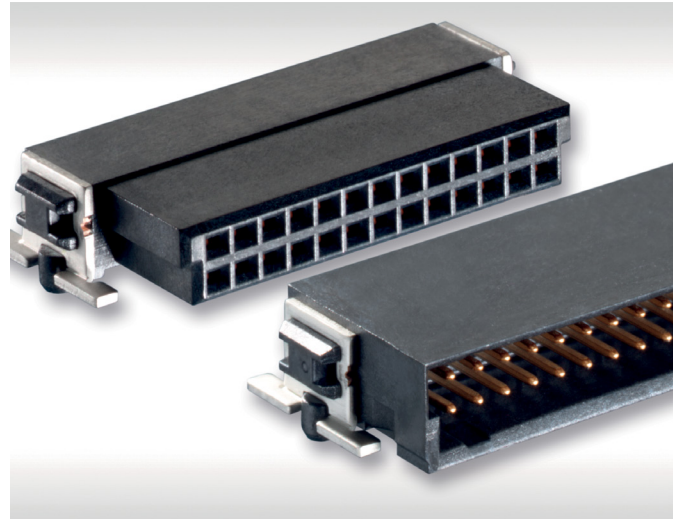
High Reliable Contact Design

- reliable, dual-beam female contact
- twisted contact tulip (90°)
- rolled, homogeneous surface, provides for more secure contact mating
- wide contact surfaces between the mated pairs
- extremely low surface roughness significantly reduces abrasion
- low contact resistance



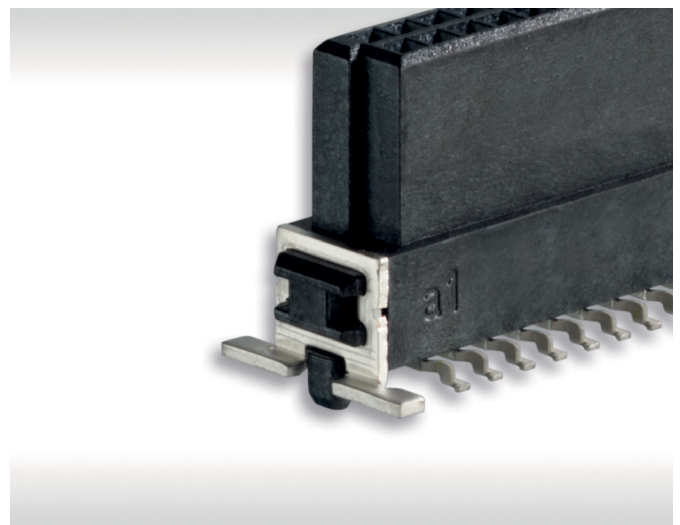
Polarization / Mating Face

- mating face polarization guards against mismating and incorrect connection
- more secure mating due to insertion chamfers in the capture range
- distinctive guide elements for precise insertion



Robust Solder Clips

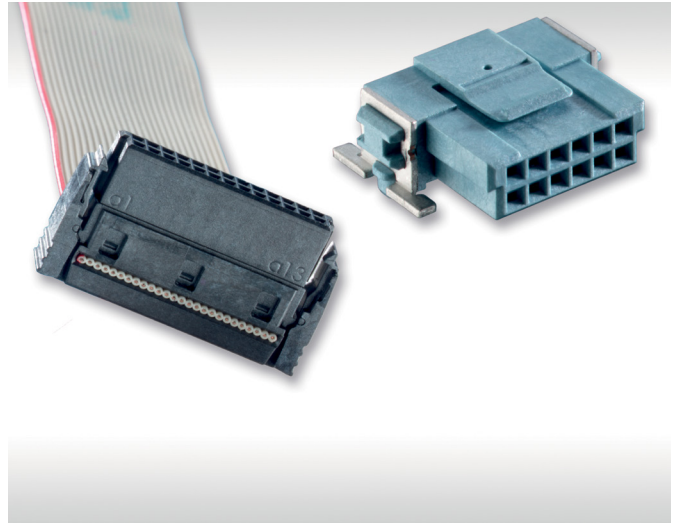
- outstanding retention forces on the circuit board
- soldering brackets absorb mechanical stress and are able to withstand high shock and vibration loads
- documented shear and tear-off forces build trust in surface-mounted connectors (e.g., shear force: min. 1000 N; tear-off force: min. 100 N)



ADVANTAGES

Interlocking Snap-In

- lockable printed circuit board (PCB) and cable connectors
- secured against heavy vibration and shock loads
- snap-in: locking when mating; can only be released with tools
- cable connector: integrated locking lever; can be manually released without tools
- protection against accidental release of Wire-to-Board connections
- cable guide provides for strain relief



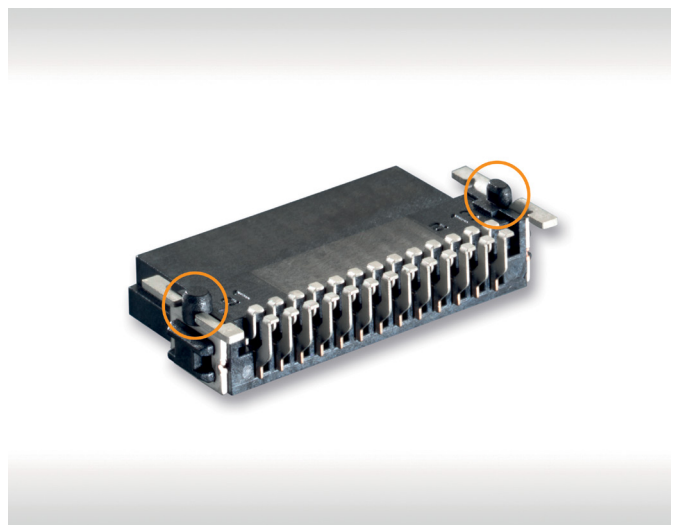
Snap-In B-to-B Adapter

- single-sided locking of Board-to-Board adapters on low-profile female connectors
- enables the mating and release of two boards always on one specified side



Locating Pegs

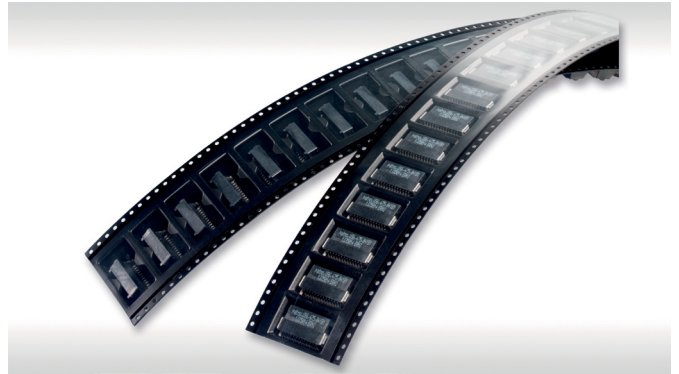
- geometrically heterogeneous locating pegs for precise positioning on the circuit board
- enables excellent compensation of PCB holes for both positive and negative tolerances



PROCESSING

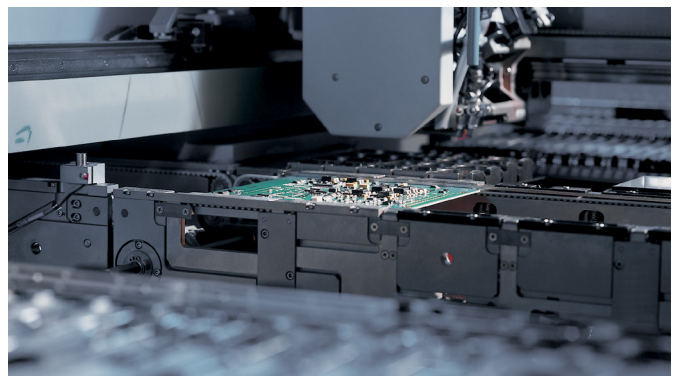
Tape and Reel Packaging

- transport safe packaging
- automatic assembly



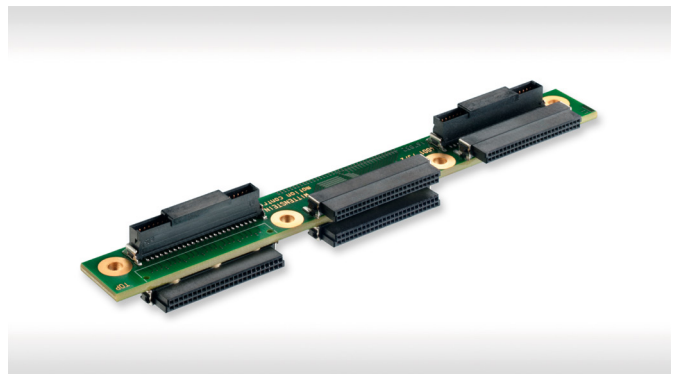
Automatic Assembly and Reflow Soldering

- for efficient processing on modern assembly lines



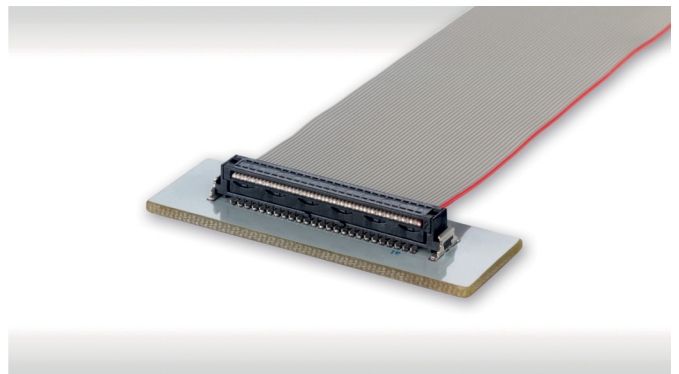
Backside Reflow Soldering

- capable of two sided reflow soldering



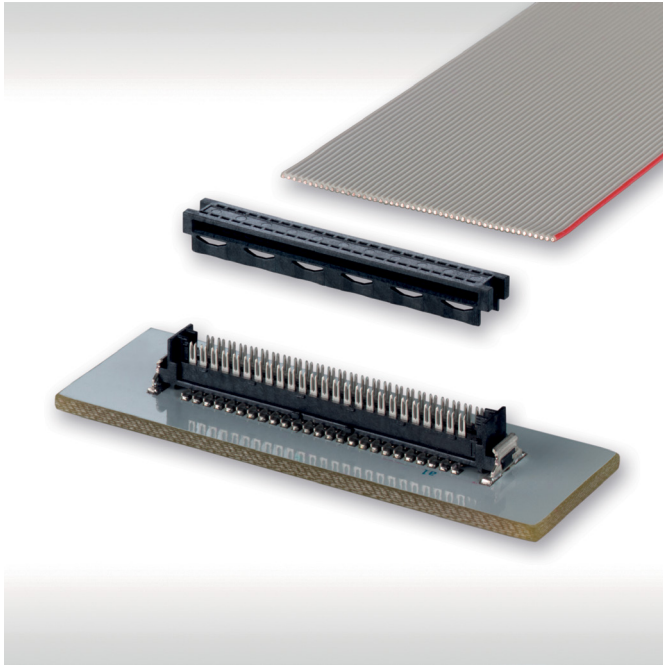
Permanent Wire-to-Board Connection (Board-on IDC)

- automated and cost-efficient assembly of ribbon cables

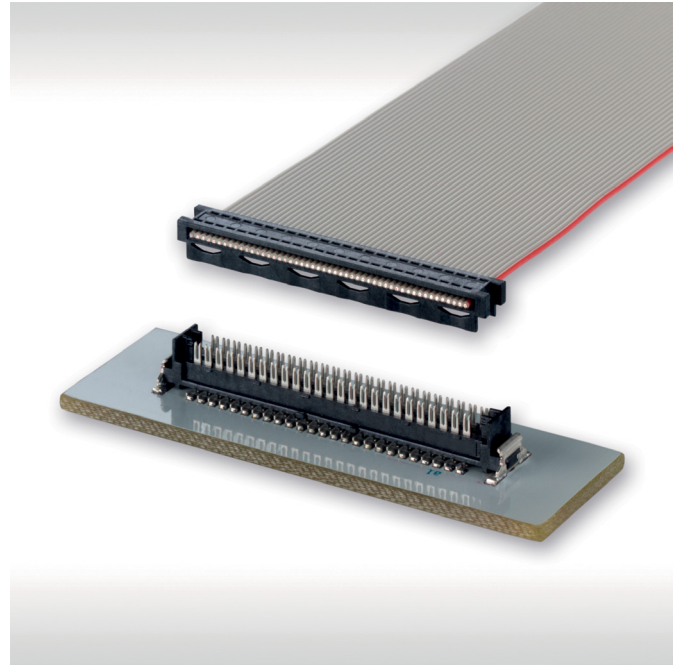


BOARD-ON IDC

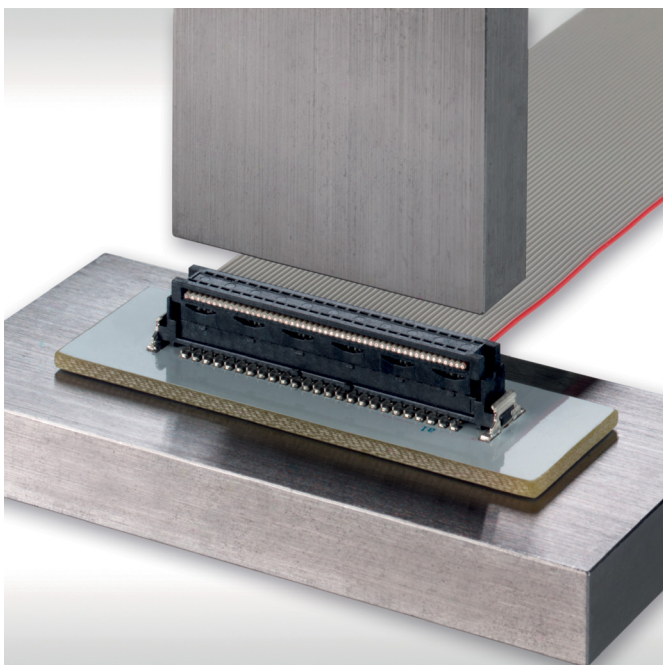
Automated Assembly



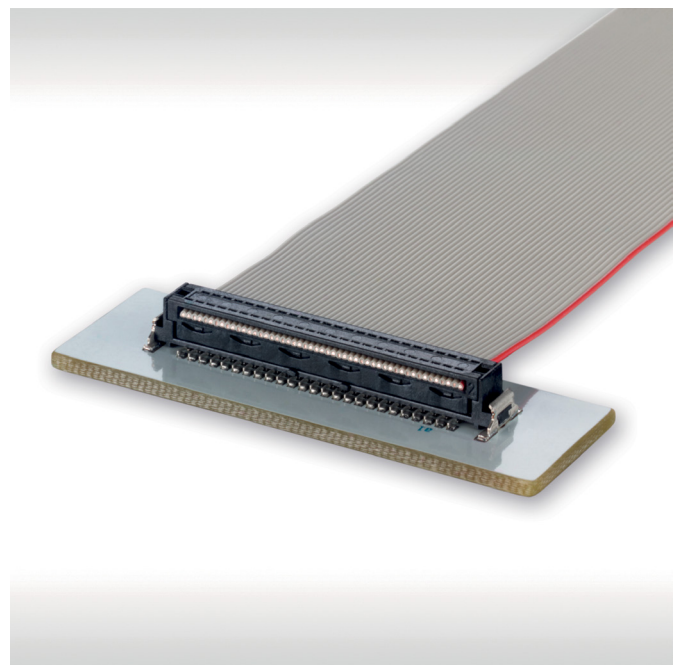
Feeding of the Ribbon Cable and Cable Guide



Press-in without Special Tool

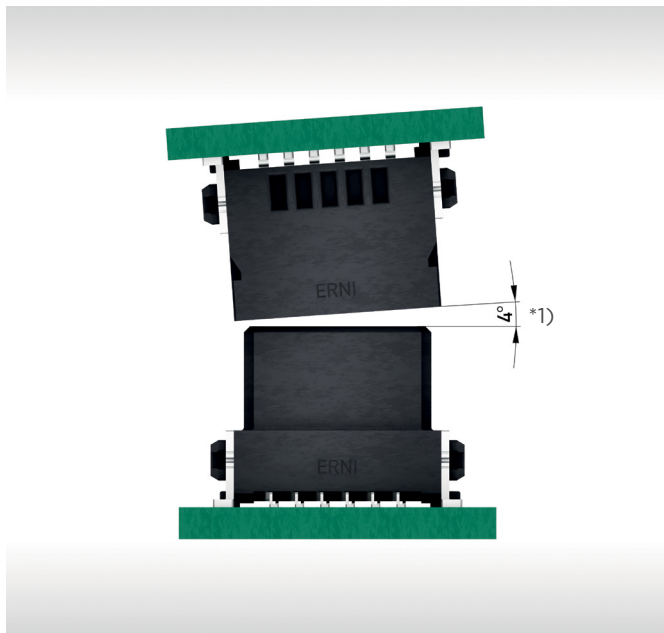


Processed Connection



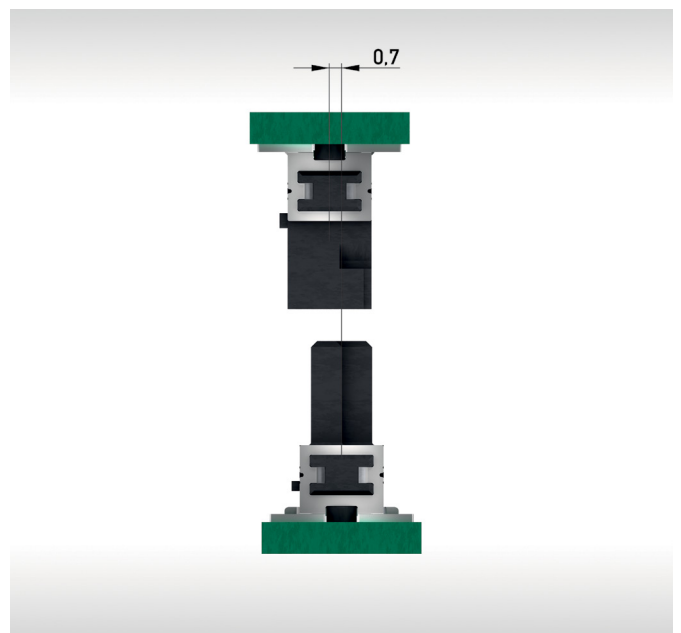
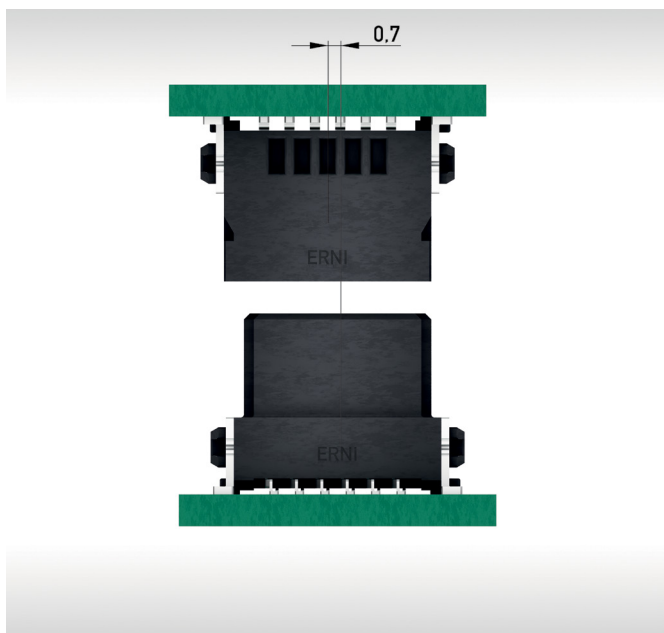
MATING CONDITIONS

Allowed Inclination for a more Secure Self-Centering



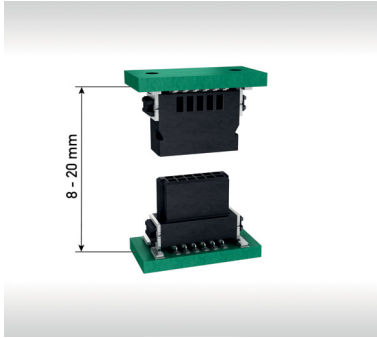
*1) depends on no. of pins and misalignment tolerance

Allowed Misalignment Tolerances for a more Secure Self-Centering

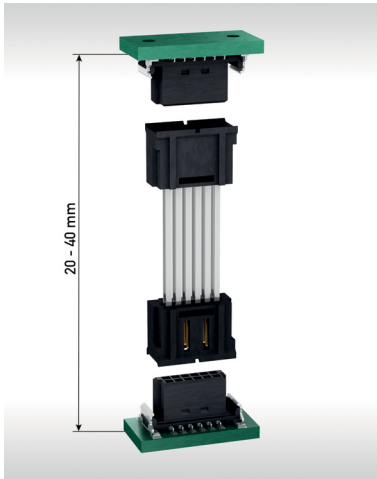


BOARD-TO-BOARD HEIGHT

Stacked Boards / Mezzanine



| Board-to-Board Height | Male Stacking Height | Female Stacking Height |
|-----------------------|----------------------|------------------------|
| 8.00 - 9.50 mm | 1.75 mm | 6.25 mm |
| 9.50 - 11.00 mm | 3.25 mm | 6.25 mm |
| 10.80 - 12.30 mm | 1.75 mm | 9.05 mm |
| 12.30 - 13.80 mm | 3.25 mm | 9.05 mm |
| 13.90 - 15.40 mm | 4.85 mm | 9.05 mm |
| 15.40 - 16.90 mm | 1.75 mm | 13.65 mm |
| 16.90 - 18.40 mm | 3.25 mm | 13.65 mm |
| 18.50 - 20.00 mm | 4.85 mm | 13.65 mm |



| Board-to-Board Height | Board-to-Board Adapter | Female Stacking Height |
|-----------------------|------------------------|------------------------|
| 20 mm | 20 mm | 2 x 6.25 mm |
| 22 mm | 22 mm | 2 x 6.25 mm |
| 24 mm | 24 mm | 2 x 6.25 mm |
| 26 mm | 26 mm | 2 x 6.25 mm |
| 28 mm | 28 mm | 2 x 6.25 mm |
| 30 mm | 30 mm | 2 x 6.25 mm |
| 32 mm | 32 mm | 2 x 6.25 mm |
| 34 mm | 34 mm | 2 x 6.25 mm |
| 36 mm | 36 mm | 2 x 6.25 mm |
| 38 mm | 38 mm | 2 x 6.25 mm |
| 40 mm | 38 mm (wipe length) | 2 x 6.25 mm |

ELECTRICAL AND MECHANICAL CHARACTERISTICS

Technical Data

| Description | Standard | PCB Connectors, Cable Assemblies, B-to-B Adapter | Board-on IDC (Ribbon Cable AWG 30, 250 mm) |
|--|-----------------------|--|--|
| | | | |
| Climate category | DIN EN 60068-1 test b | 55 / 150 / 56 | 55 / 125 / 56 |
| Temperature range | | -55 / 125 °C (PCB Connectors) -55 / 125 °C (TPE-S Cable) | -55 / 125 °C (TPE-S Cable) |
| Current rating per contact | IEC60512 test 5b | 12-pin version at 20 °C ambient temperature: 1.7 A (up to 2.7 A with optimized layout) | |
| Air- and creepage distance | | contact - contact min. 0.4 mm | |
| Operating voltage | IEC 60664 | The permissible operating voltages depend on the customer application and on the applicable or specified safety requirements. Insulation coordination according to IEC 60664-1 has to be regarded for the complete electrical device. Therefore, the maximum creepage and clearance distances of the mated connectors are specified for consideration as a part of the whole current path. In practice, reductions in creepage or clearance distances may occur due to the conductive pattern of the printed board or the wiring used, and have to be taken into account separately. As a result the creepage and clearance distances for the application may be reduced compared to those of the connector. | |
| Dielectric strength | IEC 60512 test 4a | contact - contact 500 V _{rms} | |
| Contact resistance | IEC 60512 test 2a | < 25 mΩ < 35 mΩ (Board-to-Board Height 18.50 - 20.00 mm) < 10 mΩ (cable assemblies) | < 10 mΩ |
| Insulation resistance | IEC 60512 test 3a | > 10 ⁴ MΩ | |
| Vibration, sine | IEC 60512 test 6d | 10 - 2000 Hz 20 g | |
| Contact disturbance (while vibration test) | IEC 60512 test 2e | < 1 μs | |
| Shock halfsine | IEC 60512 test 6c | 50 g 11 ms | |
| Contact disturbance (while shock test) | IEC 60512 test 2e | < 1 μs | |
| Mechanical operation | IEC 60512 test 9a | 500 mating cycles | |
| Insertion and withdrawal force max. | IEC 60512 test 13b | 0.5 N per contact | |
| Gauge retention force | IEC 60512 test 16e | > 0.1 N | |
| Processing Conditions | | | |
| Hand soldering temperature max. | IEC 60068-2-20 | 3.5 s at 350 °C | |
| Dip soldering temperature max. | IEC 60068-2-20 | 10 s at 260 °C | |
| Reflow soldering temperature max. | JEDEC J-STD-020 | 20 - 40 s at 260 °C | |
| Coplanarity | | < 0.1 mm | |

ELECTRICAL AND MECHANICAL CHARACTERISTICS

Technical Data

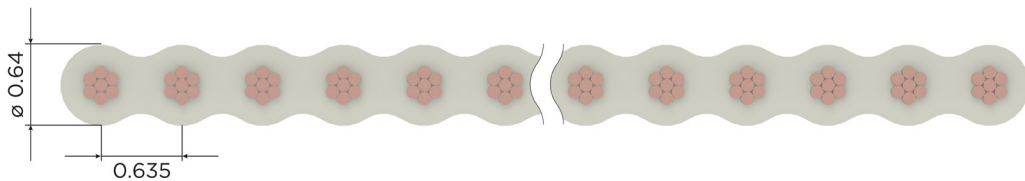
| Description | Standard | PCB Connectors, Cable Assemblies, B-to-B Adapter | Board-on IDC (Ribbon Cable AWG 30, 250 mm) |
|----------------------------------|----------|---|--|
| Housing Material | | | |
| Insulation body | | | LCP |
| CTI value | IEC 112 | | 175 |
| UL flame rating | | | UL 94 V-0 |
| UL file plastic material | | | E83005 |
| Contact Material | | | |
| Base material | | | Cu alloy |
| Mating area | | gold plating | - |
| Termination area | | | Sn |
| Environment Compatibility | | | |
| Recycling | | no flame-retardant additives, no toxic additives allow easy recycling | |
| Product Approval | | | |
| UL/CSA | | | E84703 |

Partial LV214 testing for selected SMC configurations done. If you want to know more, please contact TE/ERNI.
In general, testings are done according to connector standards. No liability for usage of connectors in the application.

ELECTRICAL AND MECHANICAL CABLE CHARACTERISTICS

Technical Data Flat Ribbon Cables

| Description | Standard cable (PVC) | High Temperature Cable (TPE-S) | Halogen-free Cable (Polyolefin TPE-O) |
|--------------------------|--|---|--|
| Cross section | AWG-30/ 7/ 0.06 mm ² | | |
| Conductor | stranded Cu wire, tinned, 7x0.102 / 0.06 mm ² | | |
| Coded wire | available | | |
| Insulation | PVC gray (similar to RAL 78032) | TPE-S gray (similar to RAL 78032) | TPE-O gray (similar to RAL 78032) |
| Insulation thickness | min. 0.1mm | | |
| Shore hardness | 94 ±2 (Shore A) | 52 ±3 (Shore D) | 94 ±2 (Shore A) resp. 50 ±3 (Shore D) |
| Technical Data | | | |
| Temperature range | -20/105 °C (fixed) -10/105 °C (mobile) | -60/125 °C (fixed) -40/125 °C (mobile) | -40/105 °C (fixed) -20/105 °C (mobile) |
| Dielectric strength | 1500 V _{rms} | 1000 V _{rms} | 1200 V _{rms} |
| Conductor resistance | ≤ 350 Ω/km at 20 °C | | |
| Insulation resistance | ≥ 20 MΩ x km at 20 °C | | |
| Impedance | 125 Ω (wire-wire) 80 Ω (Ground-Signal-Ground) | 136 Ω (wire-wire) | 110 Ω (wire-wire) 75 Ω (Ground-Signal-Ground) |
| Bending cycles (typical) | min. 1 million at 20 x cable diameter | | |
| RoHS | compliant | | |
| Flame rating | UL 94 VW-1 | IEC 60332-1-2 | UL 1581 (Horizontal Flame Test) |



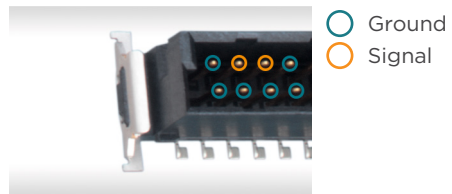
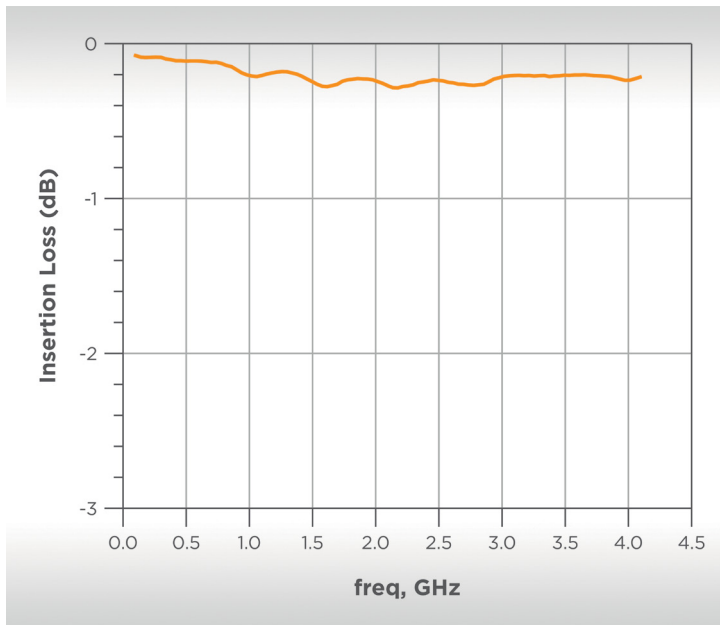
HIGH FREQUENCY CHARACTERISTICS

High-Speed Data Transmission

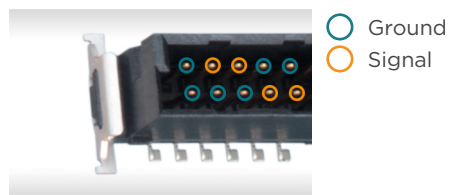
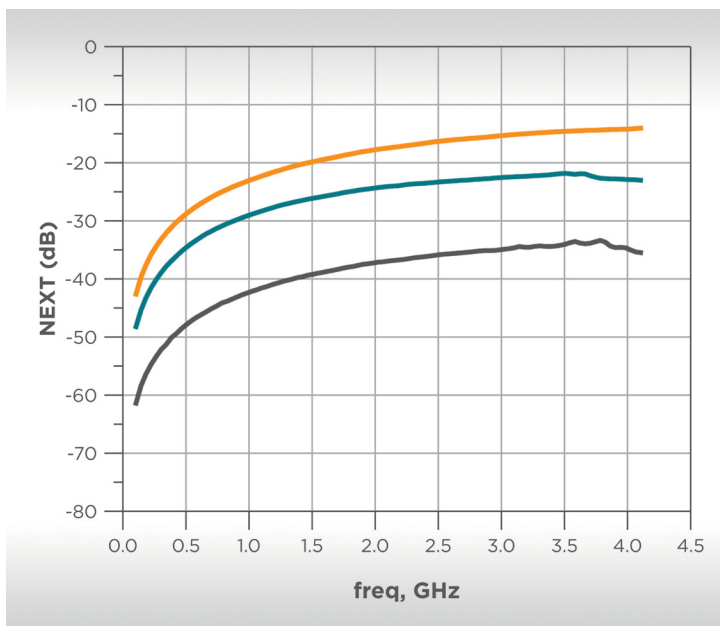
SMC connectors as solution for unshielded high-speed applications. The practically continuous impedance profile allows for more secure data transmission rates of up to 3 Gbit/s (differential) if the system is suitably designed.

- de-embedded measurement results for the micro backplane/daughter card application
- 50-pin SMC, angled female connector, straight male connector (low profile)
- differential signal transmission

Insertion Loss



Near End Crosstalk (Next)



| Agressor / Victim | |
|---------------------------------------|---------------------------|
| — | A2_3 / B2_3 |
| — | A2_3 / A4_5 |
| — | A2_3 / B4_5 (shown above) |

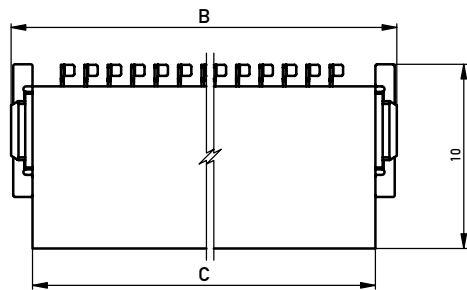
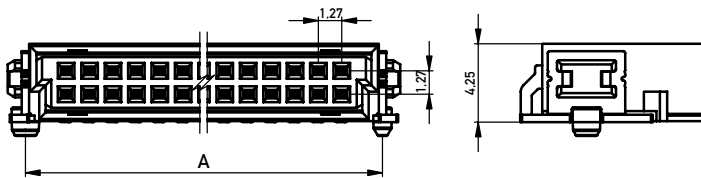
RIGHT ANGLE MALE

Product Specification

- Surface mount technology (SMT) termination
- dual row connector
- data rates up to 3 Gbit/s
- location pegs for exact board placement
- black insulation body for fast and reliable visual recognition
- automated board assembly
- for available part numbers please refer to our website



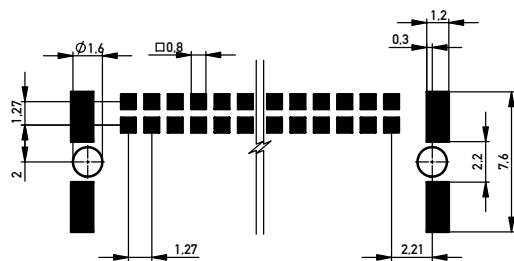
Dimensional Drawings



| No. of Contacts | A | B | C |
|-----------------|-------|-------|-------|
| 12 | 10.77 | 12.70 | 10.35 |
| 16 | 13.31 | 15.24 | 12.91 |
| 20 | 15.85 | 17.78 | 15.45 |
| 26 | 19.66 | 21.59 | 19.26 |
| 32 | 23.47 | 25.40 | 23.07 |
| 40 | 28.55 | 30.48 | 28.15 |
| 50 | 34.90 | 36.83 | 34.50 |
| 68 | 46.33 | 48.26 | 45.93 |
| 80 | 53.95 | 55.88 | 53.55 |

All dimensions in mm.

Recommended Layout



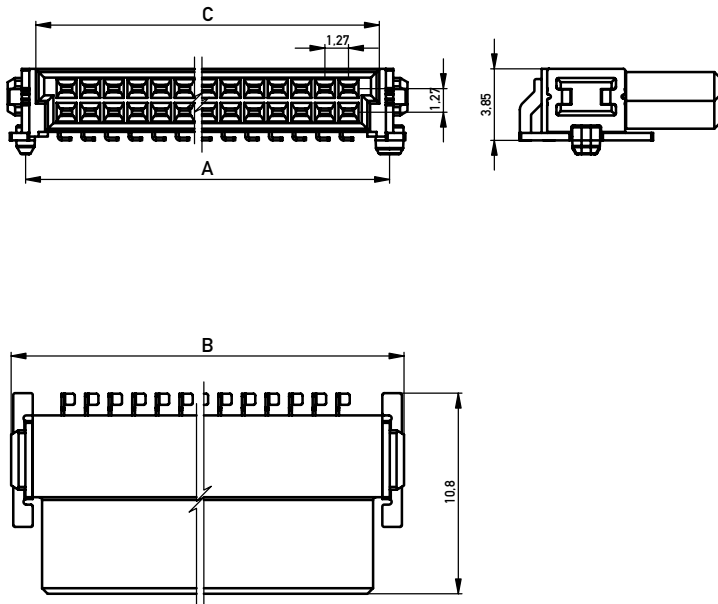
RIGHT ANGLE FEMALE

Product Specification

- SMT termination
- dual row connector
- data rates up to 3 Gbit/s
- location pegs for exact board placement
- black insulation body for fast and reliable visual recognition
- automated board assembly
- for available part numbers please refer to our website



Dimensional Drawings



| No. of Contacts | A | B | C |
|-----------------|-------|-------|-------|
| 12 | 10.77 | 12.70 | 9.37 |
| 16 | 13.31 | 15.24 | 11.91 |
| 20 | 15.85 | 17.78 | 14.45 |
| 26 | 19.66 | 21.59 | 18.26 |
| 32 | 23.47 | 25.40 | 22.07 |
| 40 | 28.55 | 30.48 | 27.15 |
| 50 | 34.90 | 36.83 | 33.50 |
| 68 | 46.33 | 48.26 | 44.93 |
| 80 | 53.95 | 55.88 | 52.55 |

All dimensions in mm.

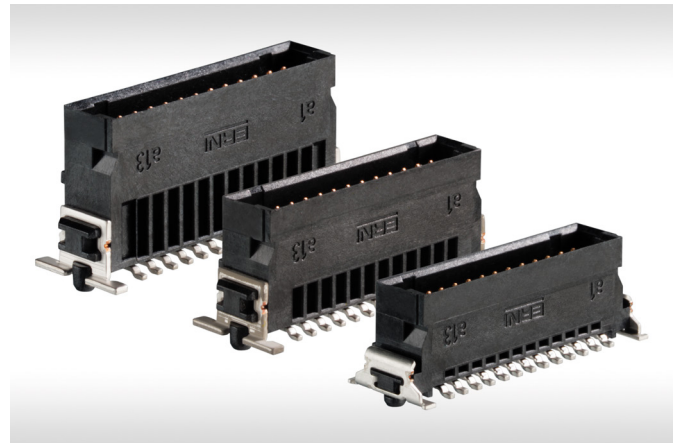
Recommended Layout



VERTICAL MALE

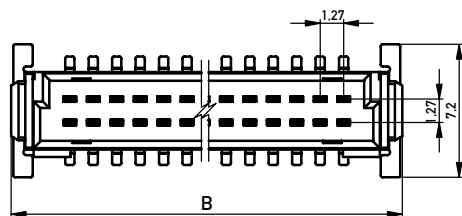
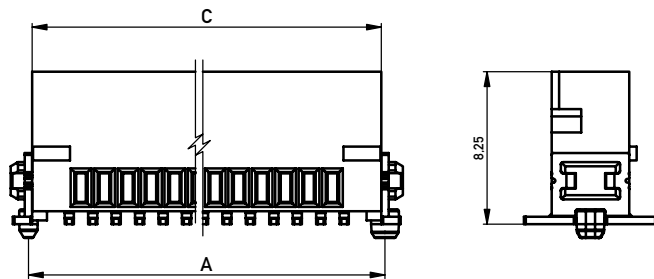
Product Specification

- SMT termination
- dual row connector
- data rates up to 3 Gbit/s
- location pegs for exact board placement
- black insulation body for fast and reliable visual recognition
- automated board assembly
- 3 stacking heights (1.75, 3.25, 4.85 mm)
- for available part numbers please refer to our website



Dimensional Drawings

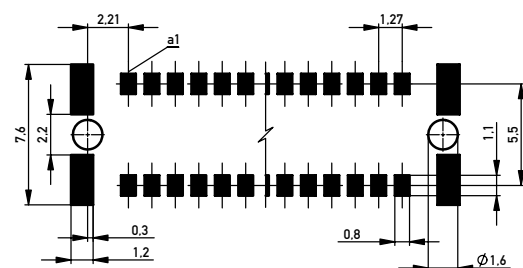
Unmated Stacking Height 3.25 mm



| No. of Contacts | A | B | C |
|-----------------|-------|-------|-------|
| 12 | 10.77 | 12.70 | 10.37 |
| 16 | 13.31 | 15.24 | 12.91 |
| 20 | 15.85 | 17.78 | 15.45 |
| 26 | 19.66 | 21.59 | 19.26 |
| 32 | 23.47 | 25.40 | 23.07 |
| 40 | 28.55 | 30.48 | 28.15 |
| 50 | 34.90 | 36.83 | 34.50 |
| 68 | 46.33 | 48.26 | 45.93 |
| 80 | 53.95 | 55.88 | 53.55 |

All dimensions in mm.

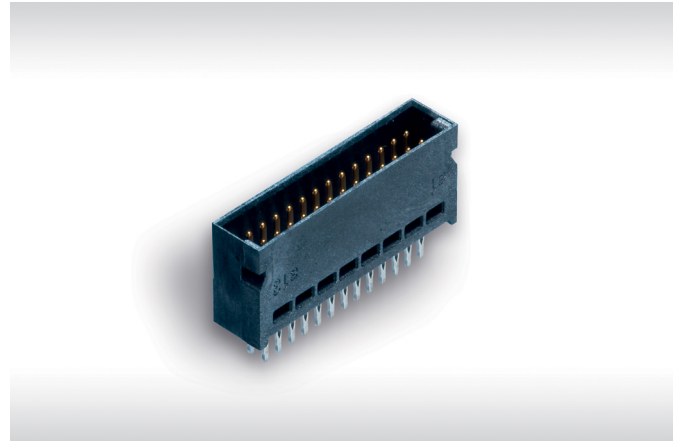
Recommended Layout



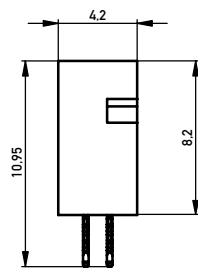
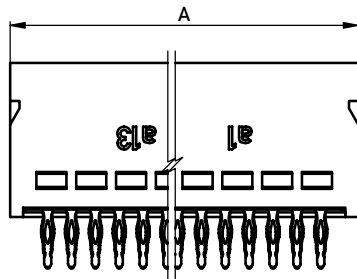
VERTICAL MALE PRESSFIT

Product Specification

- pressfit termination
- dual row connector
- data rates up to 3 Gbit/s
- black insulation body for fast and reliable visual recognition
- virtually automated board assembly
- stacking height 3.25 mm
- press-in tools and toggle presses available from ERNI
- for available part numbers please refer to our website

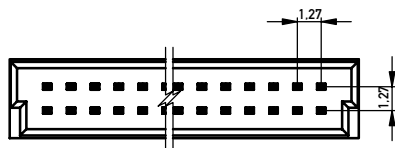


Dimensional Drawings

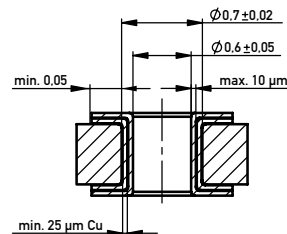
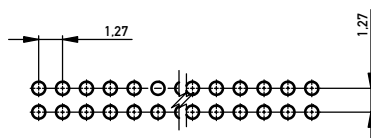


| No. of Contacts | A |
|-----------------|-------|
| 12 | 10.35 |
| 26 | 19.24 |
| 50 | 34.48 |
| 68 | 45.91 |
| 80 | 53.53 |

All dimensions in mm.



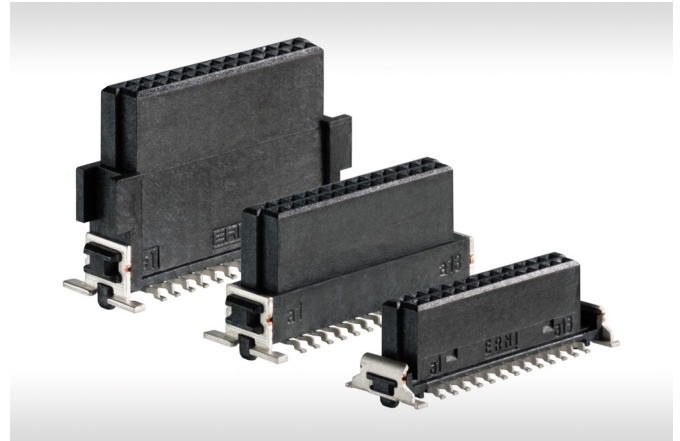
Recommended Layout | Hole Design



VERTICAL FEMALE

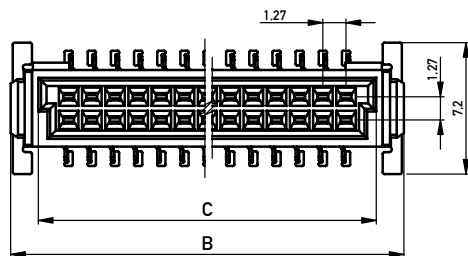
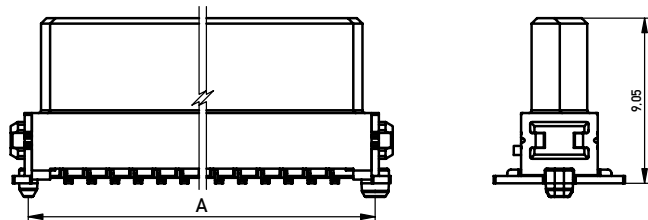
Product Specification

- SMT termination
- dual row connector
- data rates up to 3 Gbit/s
- location pegs for exact board placement
- black insulation body for fast and reliable visual recognition
- automated board assembly
- 3 stacking heights (6.25, 9.05, 13.65 mm)
- for available part numbers please refer to our website



Dimensional Drawings

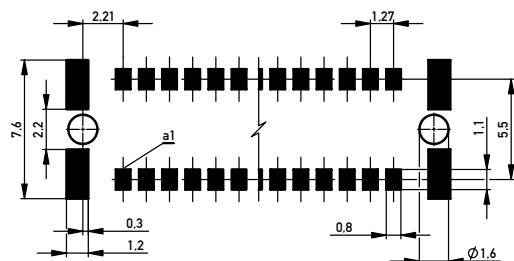
Unmated Stacking Height 9.05 mm



| No. of Contacts | A | B | C |
|-----------------|-------|-------|-------|
| 12 | 10.77 | 12.70 | 9.37 |
| 16 | 13.31 | 15.24 | 11.91 |
| 20 | 15.85 | 17.78 | 14.45 |
| 26 | 19.66 | 21.60 | 18.26 |
| 32 | 23.47 | 25.40 | 22.07 |
| 40 | 28.55 | 30.48 | 27.15 |
| 50 | 34.90 | 36.80 | 33.50 |
| 68 | 46.33 | 48.20 | 44.93 |
| 80 | 53.95 | 55.80 | 52.55 |

All dimensions in mm.

Recommended Layout



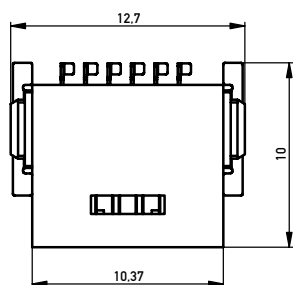
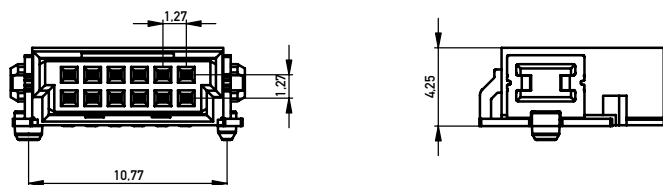
RIGHT ANGLE MALE WITH LOCKING SYSTEM

Product Specification

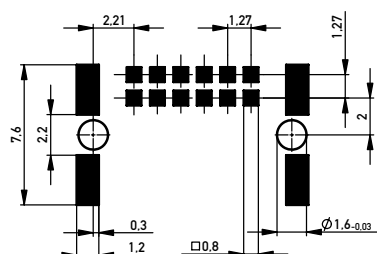
- two types of interlocking:
 - positive lock (blue colored): unlockable i.e. by tool, tip of pen
 - friction lock (black colored): unlockable without any tool
- SMT termination
- data rates up to 3 Gbit/s
- location pegs for exact board placement
- automated board assembly
- for available part numbers please refer to our website



Dimensional Drawings



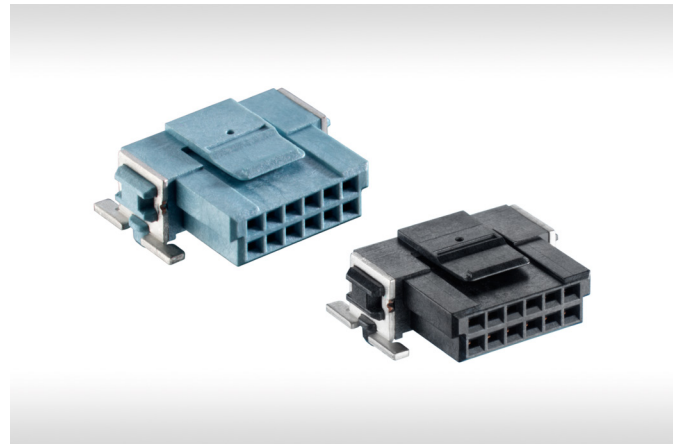
Recommended Layout



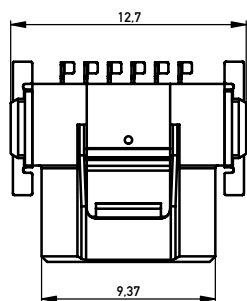
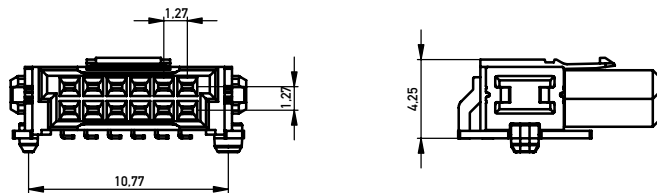
RIGHT ANGLE FEMALE WITH LOCKING SYSTEM

Product Specification

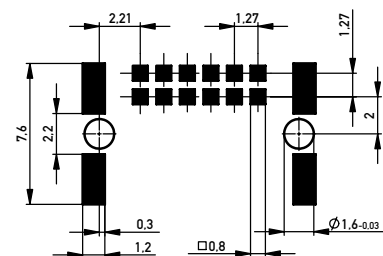
- two types of interlocking:
 - positive lock (blue colored): unlockable i.e. by tool, tip of pen
 - friction lock (black colored): unlockable without any tool
- SMT termination
- data rates up to 3 Gbit/s
- location pegs for exact board placement
- automated board assembly
- for available part numbers please refer to our website



Dimensional Drawings



Recommended Layout



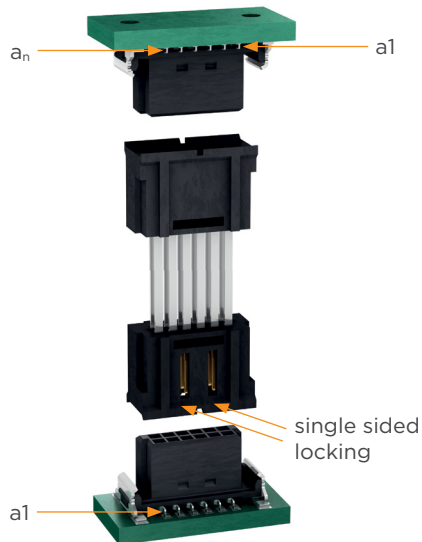
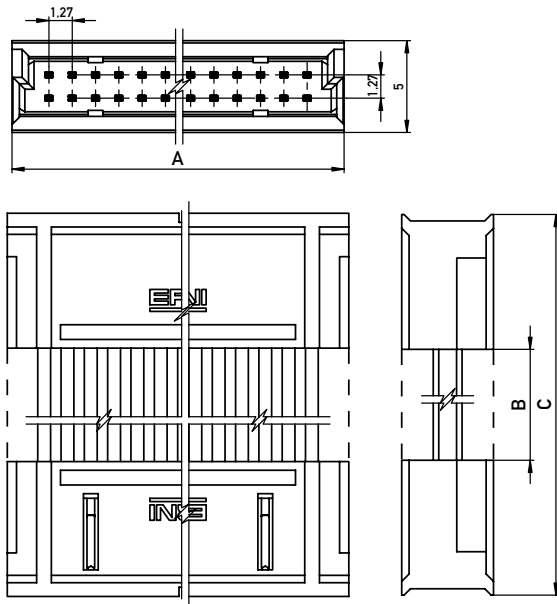
BOARD-TO-BOARD ADAPTER

Product Specification

- Board-to-Board adapter for parallel PCB distances of 20-40 mm
- moulded (hotmelt) versions for improved environmental resistance and finger safe protection
- single-sided locking of Board-to-Board adapters on low-profile female connectors
- enables the mating and release of two boards always on one specified side
- for available part numbers please refer to our website



Dimensional Drawings



| No. of Contacts | A |
|-----------------|-------|
| 12 | 10.37 |
| 26 | 19.26 |
| 50 | 34.50 |
| 68 | 45.93 |
| 80 | 53.55 |

All dimensions in mm.

| B-to-B Adapter (Board-Distance) | B | C |
|---------------------------------|------|------|
| 20 | 3.5 | 18.2 |
| 22 | 5.5 | 20.2 |
| 24 | 7.5 | 22.2 |
| 26 | 9.5 | 24.2 |
| 28 | 11.5 | 26.2 |
| 30 | 13.5 | 28.2 |
| 32 | 15.5 | 30.2 |
| 34 | 17.5 | 32.2 |
| 36 | 19.5 | 34.2 |
| 38 | 21.5 | 36.2 |

BOARD-ON IDC

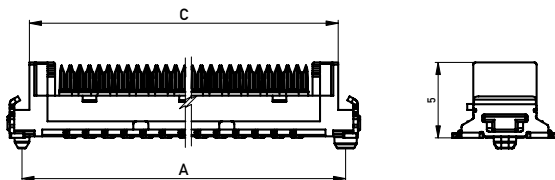
Product Specification

- permanent wire-to-board connection
- SMT and IDC termination
- dual row connector
- data rates up to 3 Gbit/s
- location pegs for exact board placement
- black insulation body for fast and reliable visual recognition
- flat ribbon cables AWG 30
- easy assembly with standard toggle press
- for available part numbers please refer to our website



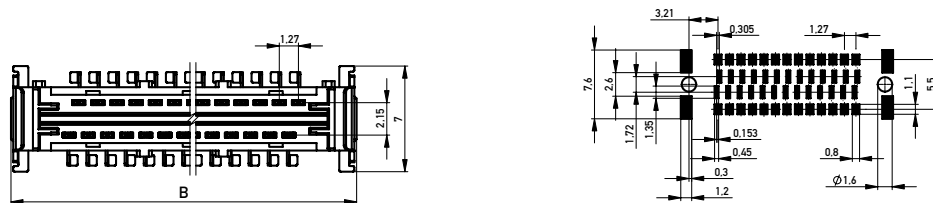
Dimensional Drawings | Recommended Layout

Board-on Connectors

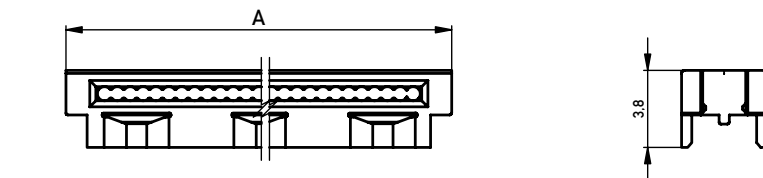


| No. of Contacts | A | B | C |
|-----------------|-------|-------|-------|
| 12 | 12.77 | 14.70 | 11.78 |
| 26 | 21.66 | 23.59 | 20.67 |
| 50 | 36.90 | 38.83 | 35.91 |

All dimensions in mm.

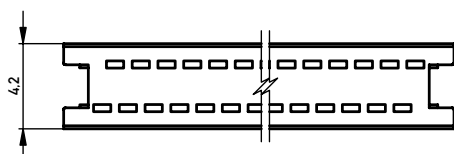


Board-on Cable Guide

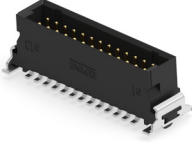
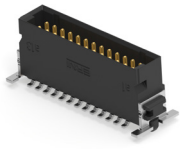
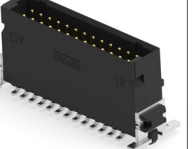
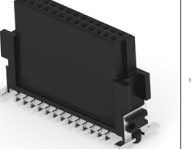
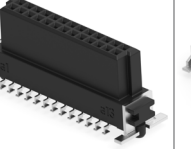
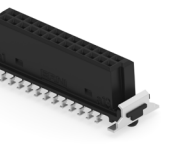



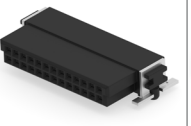

| No. of Contacts | A | B |
|-----------------|-------|-------|
| 12 | 10.78 | 6.98 |
| 26 | 19.67 | 15.87 |
| 50 | 34.91 | 31.11 |

All dimensions in mm.



SMC Product Selection

| | Vertical Male (Type Q) | | | Vertical Female (Type Q) | | |
|-----------|---|---|---|--|---|---|
| |  |  |  |  |  |  |
| Positions | 1.75mm Height | 3.25mm Height | 4.85mm Height | 13.65mm Height | 9.05mm Height | 6.25mm Height |
| 12 pin | 244836-E | 244854-E | 234206-E | 234198-E | 154717-E | 154805-E |
| 16 pin | 254587-E | 254536-E | 254414-E | 354070-E | 354062-E | 354055-E |
| 20 pin | 254588-E | 254537-E | 254415-E | 354071-E | 354063-E | 354056-E |
| 26 pin | 244837-E | 244855-E | 234207-E | 204763-E | 154718-E | 154806-E |
| 32 pin | 254589-E | 254538-E | 254416-E | 354072-E | 354064-E | 354057-E |
| 40 pin | 254590-E | 254539-E | 254417-E | 354073-E | 354065-E | 204632-E |
| 50 pin | 244838-E | 244856-E | 234208-E | 234199-E | 154719-E | 154807-E |
| 68 pin | 244839-E | 244857-E | 234209-E | 234200-E | 154720-E | 154808-E |
| 80 pin | 244840-E | 244858-E | 234210-E | 234201-E | 154721-E | 154809-E |

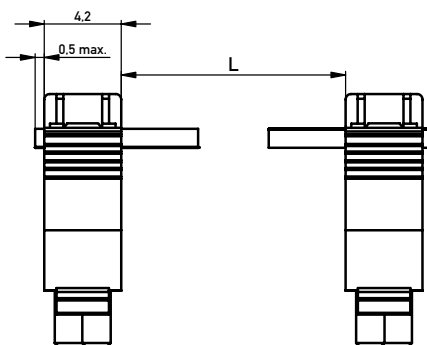
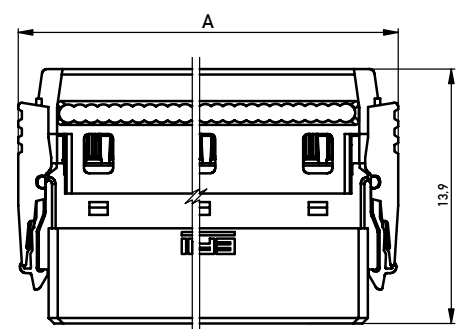
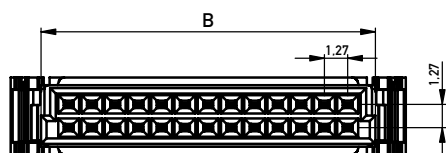
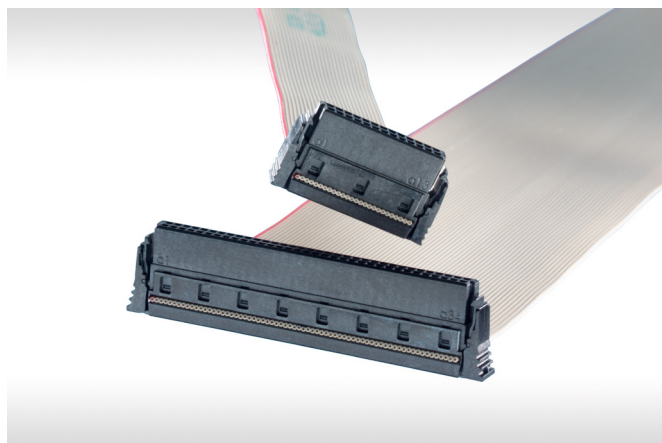
| | Right Angle Male (Type B) | Right Angle Female (Type B) | IDC Female (Type B) |
|-----------|---|---|---|
| |  |  |  |
| Positions | | | |
| 12 pin | 154763-E | 154740-E | 214345-E |
| 16 pin | 354094-E | 354078-E | 294813-E |
| 20 pin | 354095-E | 354079-E | 294814-E |
| 26 pin | 154764-E | 154741-E | 214346-E |
| 32 pin | 354096-E | 354080-E | 294815-E |
| 40 pin | 354097-E | 354081-E | 294816-E |
| 50 pin | 154765-E | 154742-E | 214347-E |
| 68 pin | 154766-E | 154743-E | 214348-E |
| 80 pin | 154767-E | 154744-E | 214349-E |

CABLE ASSEMBLIES

Product Specification

- cable assemblies with IDC female connectors
- ribbon cable AWG 30/7
- three different cable types
- for available part numbers please refer to our website

Dimensional Drawings



| No. of Contacts | A | B |
|-----------------|-------|-------|
| 12 | 12.69 | 9.37 |
| 16 | 15.23 | 11.91 |
| 20 | 17.77 | 14.45 |
| 26 | 21.58 | 18.26 |
| 32 | 25.39 | 22.07 |
| 40 | 32.53 | 27.15 |
| 50 | 38.88 | 33.50 |
| 68 | 50.31 | 44.93 |
| 80 | 57.93 | 52.55 |

All dimensions in mm.

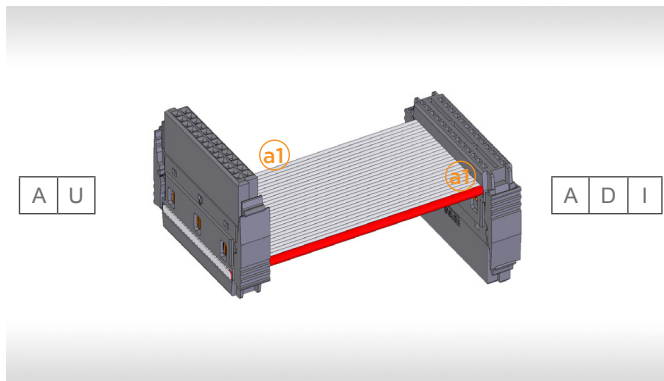
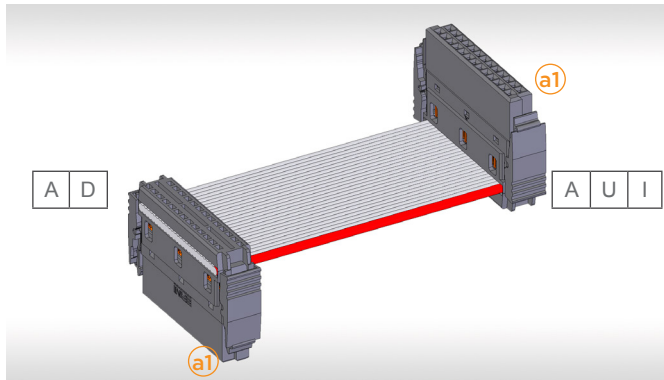
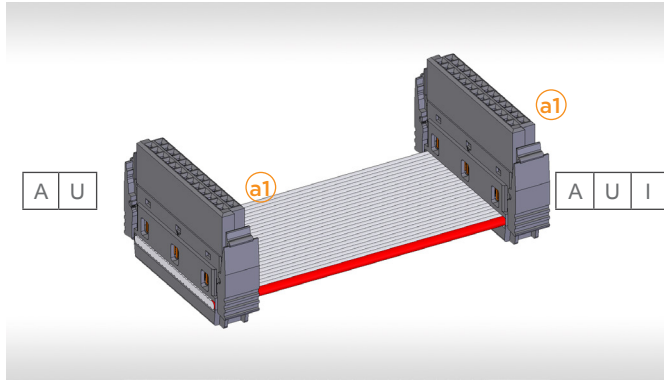
CABLE ASSEMBLIES

Configurations

Standard

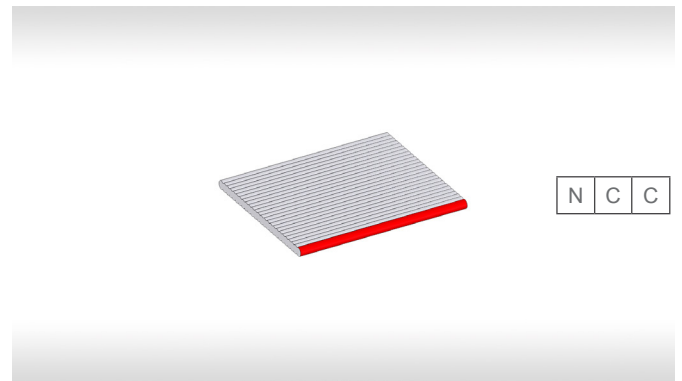
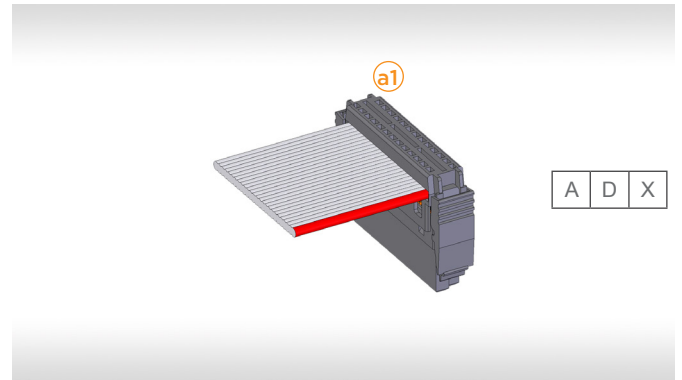
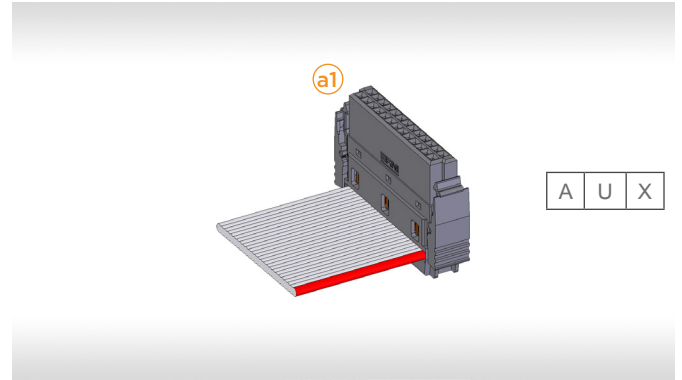
Connector #1

Connector #2



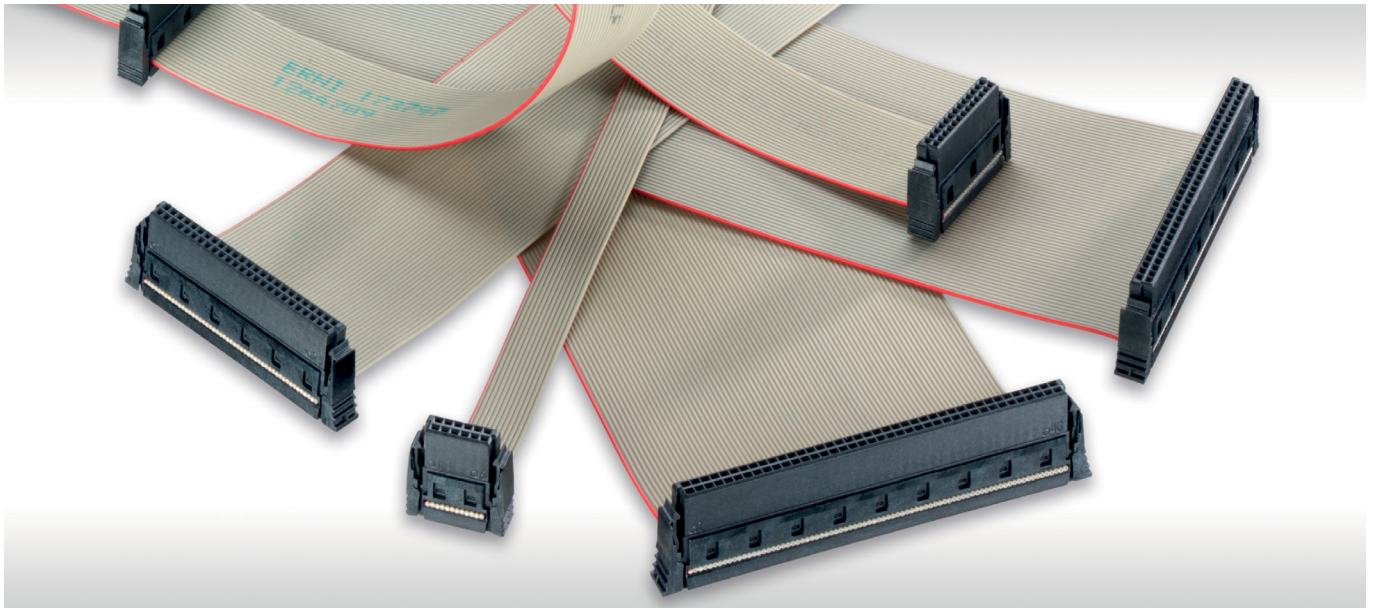
Crossed

Connector #2



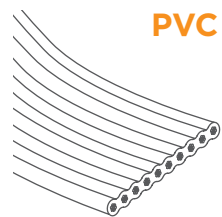
CABLE ASSEMBLIES

Cable Types



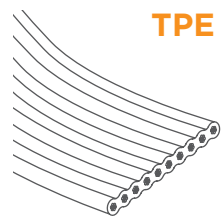
Standard

- standard ribbon cable with PVC insulation
- AWG 30/7
- excellent abrasion and cut resistance
- temperature range: -10 °C to +105 °C
- UL2678



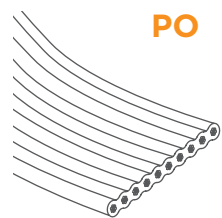
High Temperature

- high temperature resistant ribbon cable with TPE-S insulation
- AWG 30/7
- excellent abrasion and cut resistance
- temperature range: -40 °C to +125 °C



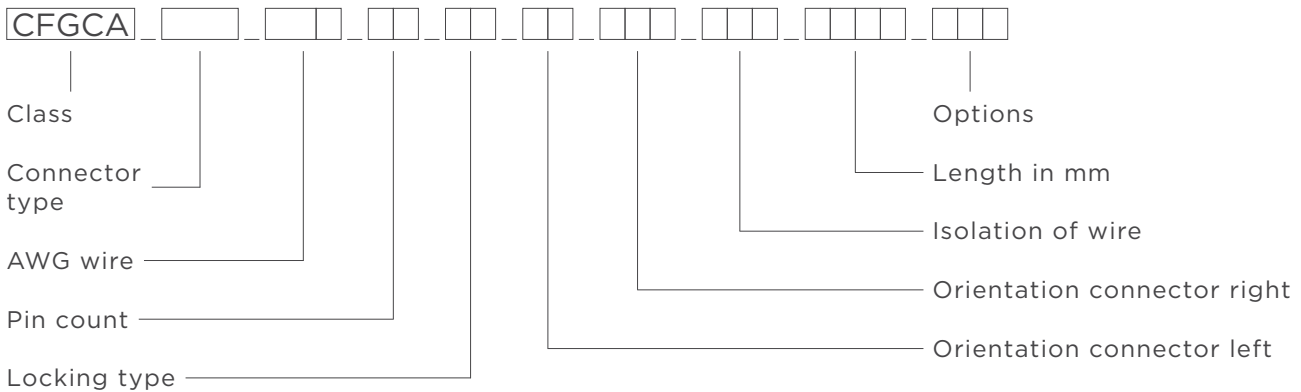
Halogen-free

- halogen-free ribbon cable with TPE-O insulation
- AWG 30/7
- excellent abrasion and cut resistance
- oil-resistant (ASTM 2)
- temperature range: -20 °C to +105 °C
- UL22092



CABLE ASSEMBLIES

Ordering Information Standard Cable Assemblies



Example for a standard configuration:

CFGCA **SMC** **30R** **12** **LL** **AU** **AUI** **PVC** **0175** **ANN**

| Ordering code field | Number of digits | Example configuration | Composition of the configuration |
|-----------------------------|------------------|-----------------------|--|
| Class | 5 | CFGCA | C on F i G urable C able A ssembly |
| Connector type | 3 | SMC | SMC |
| AWG wire | 3 | 30R | 1st and 2nd column: 30 3rd column: R ibbon Cable |
| Pin count | 2 | 12 | 12, 16, 20, 26, 32, 40, 50, 68, 80 |
| Locking type | 2 | LL | L ocking L atches S ecure L ock |
| Orientation connector left | 2 | AU | A ngeled U p A ngeled D own |
| Orientation connector right | 3 | AUI | 1st and 2nd column: A ngeled U p A ngeled D own N ot C onne C ted 3rd column: I -connected (1:1) X -connected (1:N) |
| Isolation of wire | 2 - 4 | PVC | PVC : -10 °C to +105 °C TPE : -40 °C to +125 °C PO : -20 °C to +105 °C, halogen free |
| Length in mm | 4 | 0175 | 175 mm / 25 - 2500 mm possible |
| Options | 3 | ANN | 1st column: A symmetric S ymmetric 2nd and 3rd column: custom P rint U L Label P rint ad U L Label N o print N o UL label |

CABLE ASSEMBLIES

Product Specific Technical Notes

- intended use: the offered products, i.e. cable assemblies, are components used in devices for internal wiring in non-critical industrial applications
- not intended to be used in live-support applications, no safety-classified applications, not intended for automotive use, not intended for applications with danger to life and limb
- desired audience: (professional) company customers who assume the full responsibility for their products including the ERNI cable assembly product under consideration
- customer has to carefully check the product's appropriateness for the desired use (application) with the help of its technical specifications and additionally verify that the operation of the product in said application is in agreement with all requirements that may be applicable under the scope of the actual application (applicable regulation, law, and whatever more)
- product solely ERNI-internally sampled and released - customer FAI report will not be provided (also includes PPAps, CofCs, acceptance test certificates and IMDS Data)
- ERNI may change suppliers or mix materials from various sources as long as the specification layed out here will be maintained (assumption of fit-form-function)
- outside these product offerings customer-specific assemblies to be inquired separately

For complete product usage limitations, please refer to TE Connectivity's standard warranty clause and the corresponding 108 Product Specification document

Connect With Us

We make it easy to connect with our experts and are ready to provide the support you need. Visit www.te.com/support to chat with a Product Information Specialist.

te.com

© 2026 TE Connectivity. All Rights Reserved.

TE Connectivity, TE connectivity (logo) and Every Connection Counts are trademarks owned or licensed by TE Connectivity plc family of companies.

All other logos, products and/or company names referred to herein might be trademarks of their respective owners.

While TE has made every reasonable effort to ensure the accuracy of the information in this document, TE does not guarantee that it is error-free, nor does TE make any other representation, warranty or guarantee that the information is accurate, correct, reliable or current. TE reserves the right to make any changes to the information contained herein without prior notice. TE Connectivity assumes only those obligations set forth in the terms and conditions for this product and shall in no event be liable for any incidental, indirect, or consequential damages arising out of the sale, resale, use, or misapplication of the product. TE expressly disclaims any implied warranties with respect to the information contained herein, including, but not limited to, implied warranties of merchantability or fitness for a particular purpose. Dimensions, specifications and/or information contained herein are for reference purposes only and are subject to change without notice. Consult TE for the latest dimensions, specifications and/or information. Users of TE Connectivity products must make their own assessment as to whether the respective product is suitable for the respective desired application.

01/26 AK

CATALOG

TE Connectivity

ERNI Deutschland GmbH
a TE Connectivity Ltd.
company
Seestraße 9
73099 Adelberg
Germany

Tel +49 7166 50-0
www.te.com