



Connectors > Connector Accessories > Connector Seals & Cavity Plugs > DEUTSCH Sealing Plugs



Connector Seal & Plug Type: **Keying Plug**

Primary Product Material: **PBT GF30**

Primary Product Color: **Red**

Operating Temperature (Max): **125 °C [257 °F]**

Contains Lubricant: **No**

[All DEUTSCH Sealing Plugs \(10\)](#)

Features

Product Type Features

Connector Seal & Plug Type	Keying Plug
----------------------------	-------------

Body Features

Primary Product Material	PBT GF30
Primary Product Color	Red

Usage Conditions

Operating Temperature (Max)	125 °C[257 °F]
Operating Temperature Range	-55 – 125 °C[-67 – 257 °F]

Other

Contains Lubricant	No
EU RoHS Compliance	Compliant
EU ELV Compliance	Compliant

Industry Standards

UL Flammability Rating	UL 94V-0
------------------------	----------

Packaging Features

Packaging Method

Box

Product Compliance

[For compliance documentation, visit the product page on TE.com>](#)

EU RoHS Directive 2011/65/EU

Compliant

EU ELV Directive 2000/53/EC

Compliant

China RoHS 2 Directive MIIT Order No 32, 2016

No Restricted Materials Above Threshold

EU REACH Regulation (EC) No. 1907/2006

Current ECHA Candidate List: JUNE 2024 (241)
 Candidate List Declared Against: JUNE 2024 (241)
 Does not contain REACH SVHC

Halogen Content

Not Low Halogen - contains Br or Cl > 900 ppm.

Solder Process Capability

Not reviewed for solder process capability

Product Compliance Disclaimer

This information is provided based on reasonable inquiry of our suppliers and represents our current actual knowledge based on the information they provided. This information is subject to change. The part numbers that TE has identified as EU RoHS compliant have a maximum concentration of 0.1% by weight in homogenous materials for lead, hexavalent chromium, mercury, PBB, PBDE, DBP, BBP, DEHP, DIBP, and 0.01% for cadmium, or qualify for an exemption to these limits as defined in the Annexes of Directive 2011/65/EU (RoHS2). Finished electrical and electronic equipment products will be CE marked as required by Directive 2011/65/EU. Components may not be CE marked. Additionally, the part numbers that TE has identified as EU ELV compliant have a maximum concentration of 0.1% by weight in homogenous materials for lead, hexavalent chromium, and mercury, and 0.01% for cadmium, or qualify for an exemption to these limits as defined in the Annexes of Directive 2000/53/EC (ELV). Regarding the REACH Regulation, the information TE provides on SVHC in articles for this part number is based on the latest European Chemicals Agency (ECHA) 'Guidance on requirements for substances in articles' posted at this URL: <https://echa.europa.eu/guidance-documents/guidance-on-reach>

Compatible Parts



TE Part # CAT-H3930-CH8172
 DEUTSCH HD30 Housings



TE Part # CAT-H396-CH8172
 DEUTSCH HDP20 Housings



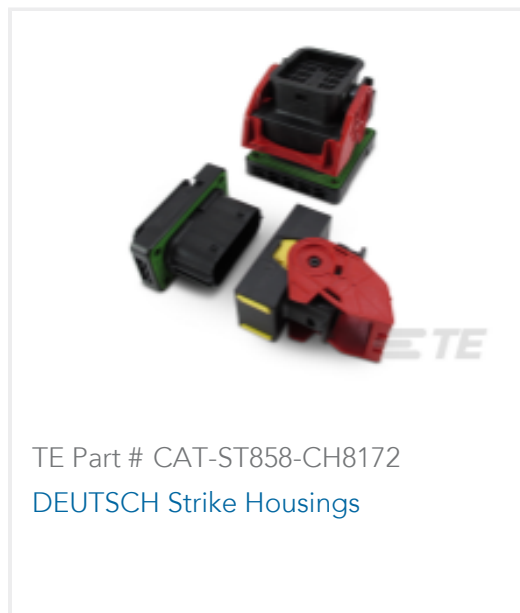
TE Part # CAT-D485-CH8172
 DEUTSCH DTM Housings



TE Part # CAT-D781-CH8172
 DEUTSCH DRB Housings



TE Part # CAT-D799-CH8172
DEUTSCH DRC Housings



TE Part # CAT-ST858-CH8172
DEUTSCH Strike Housings



TE Part # DTM04-12PA-EE04
REC, 12P, BLK, N, HIGH TEMP, A



TE Part # DTM04-08PC
REC, 8P, GRN, N, C



TE Part # DRCP28-86SB
PLG, 86P, BLK, 12/20, B



TE Part # DRCP28-86SC
PLG, 86P, BLK, 12/20, C



TE Part # DTM04-3P-R011
REC, 3P, BLK, 90DEG, PANEL



TE Part # DTMH04-2PD
REC, 2P, BLK, N, HI TEMP, D



TE Part # DTMH04-4PD
REC, 4P, BLK, N, HI TEMP, D



TE Part # DTMH06-2SD
PLG, 2P, BLK, N, HI TEMP, D



TE Part # DTMH06-4SB
PLG, 4P, BLK, N, HI TEMP, B



TE Part # DTMH06-4SC
PLG, 4P, BLK, N, HI TEMP, C



TE Part # DRCP28-86SA
PLG, 86P, BLK, 12/20, A



TE Part # DTMH06-4SA
PLG, 4P, BLK, N, HI TEMP, A



TE Part # 1-2303064-1
12POS, STAMPED 20, PIN HSG ASSY,
SLD, COD 1

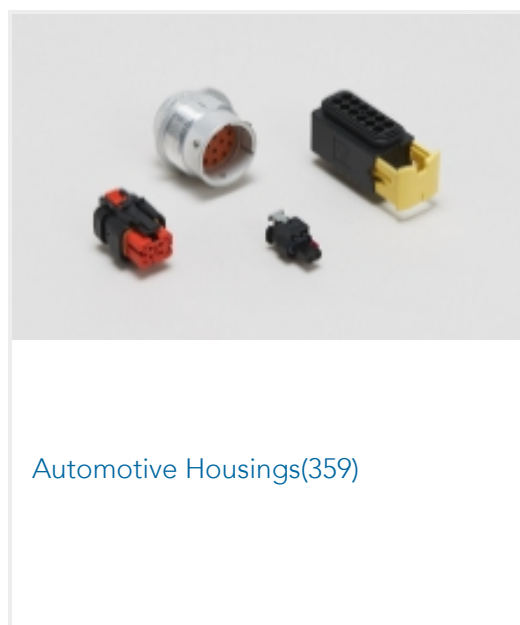


TE Part # DRCP24-86PA
REC, 86P, BLK, 12/20, A

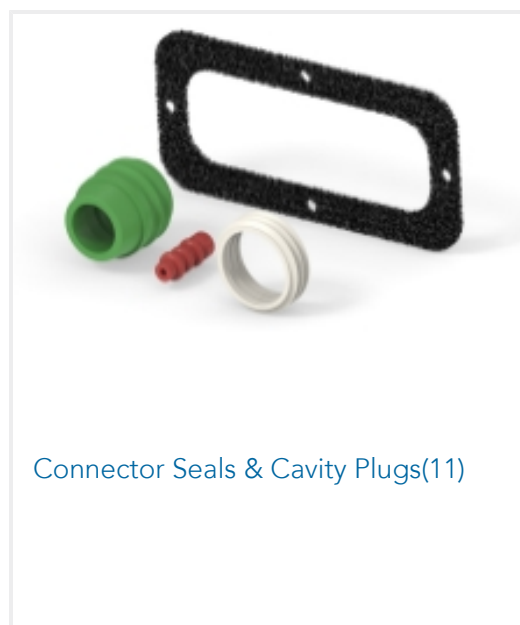
Also in the Series | **DEUTSCH HD30**



Automotive Connector Caps & Covers
(14)



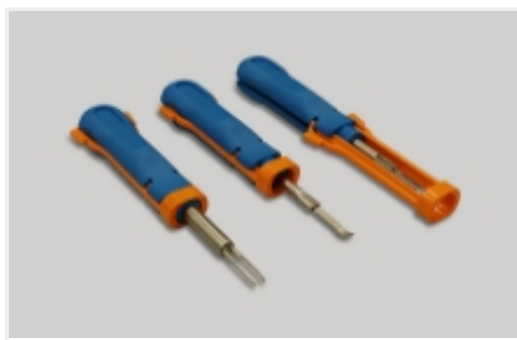
Automotive Housings(359)



Connector Seals & Cavity Plugs(11)



Connector Strain Relief(5)



Insertion & Extraction Tools(10)

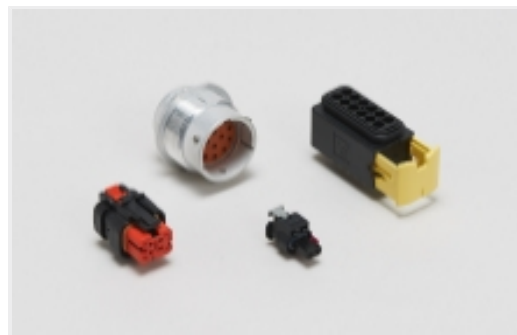


Other Automotive Connector Accessories(6)

Also in the Series | DEUTSCH HD



Automotive Connector Caps & Covers (32)



Automotive Housings(768)



Connector Backshells(29)



Connector Seals & Cavity Plugs(10)



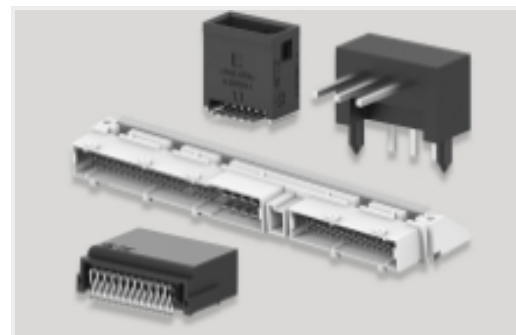
Connector Strain Relief(5)



Insertion & Extraction Tools(11)



Other Automotive Connector Accessories(12)



PCB Headers & Receptacles(1)

Customers Also Bought



TE Part #0413-003-1605
SEALING PLUG, SIZE 16, BLU



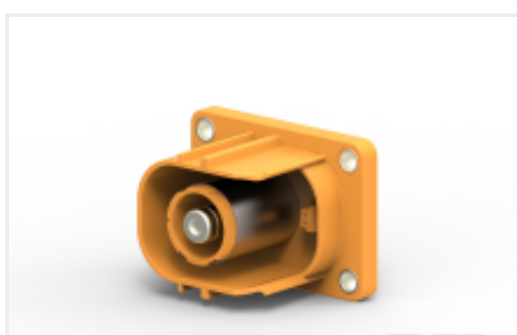
TE Part #61988-1
250 FASTON REC 22-18 AWG BR



TE Part #SRK06-MDC-32A-001
DEUTSCH Strike Housings



TE Part #144998-5
4P JPT CONNECTOR ASSY



TE Part #2137740-1
HVP1100 1POS HEADER 90 DEG ASSY SLD



TE Part #HD34-18-20PN-059
REC,20P,AL,N,CBLCLMP BT,DRAIN,16 /20,P,MC



TE Part #2137735-1
UPPER INSERT ASSY



TE Part #1-350720-9
09P UMNL V0 PLUG HSG BLACK



Documents

Product Drawings

[SEALING PLUG, SIZE 20, KEYING, RED](#)

English

CAD Files

[3D PDF](#)

3D

Customer View Model

[ENG_CVM_CVM_0413-216-2005_A.2d_dxf.zip](#)

English

Customer View Model

[ENG_CVM_CVM_0413-216-2005_A.3d_igs.zip](#)

English

Customer View Model

[ENG_CVM_CVM_0413-216-2005_A.3d_stp.zip](#)

English

By downloading the CAD file I accept and agree to the [Terms and Conditions](#) of use.

Datasheets & Catalog Pages

[DEUTSCH HD30 & HDP20 CONNECTOR SERIES](#)

English

[CONNECTOR SELECTOR](#)

English

Product Specifications

[Application Specification](#)

English

[Application Specification](#)

English

[Application Specification](#)

English

Instruction Sheets

[Instruction Sheet \(U.S.\)](#)

English

