



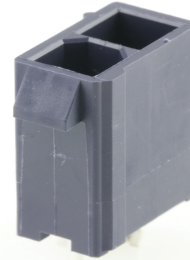
**Part Number :** [1724470202](#)

**Product Description :** Mini-Fit Jr. Header, Dual Row, Vertical, without Snap-in Plastic Peg PCB Lock, 2 Circuits, PA Polyamide Nylon 6/6 94V-2, Tin (Sn) Plating, Glow-Wire Capable

**Series Number :** 172447

**Status :** Active

**Product Category :** PCB Headers and Receptacles



---

## Documents & Resources

### Drawings

[1724470202\\_sd.pdf](#)

[PK-5566-001-001.pdf](#)

### 3D Models and Design Files

[1724470202\\_stp.zip](#)

### Specifications

[1722990000-AS-000.pdf](#)

[PS-5556-001-001.pdf](#)


[TS-5556-002-001.pdf](#)

[TS-5566-002-001.pdf](#)

---

## Product Environment Compliance

### Compliance

|                    |   |
|--------------------|---|
| GADSL/IMDS         | Not Relevant  |
| China RoHS         |  |
| EU ELV             | Not Relevant  |
| Low-Halogen Status | Not Low-Halogen per IEC 61249-2-21  |
| REACH SVHC         | Not Contained per D(2024)6225-DC (07 Nov 2024)  |
| EU RoHS            | Compliant per EU 2015/863   |

### Multiple Part Product Compliance Statements

- Eu RoHS

- REACH SVHC

- Low-Halogen

### Multiple Part Industry Compliance Documents

- IPC 1752A Class C
- IPC 1752A Class D
- Molex Product Compliance Declaration
- IEC-62474
- chemSHERPA (xml)

### EU RoHS Certificate of Compliance

---

## Part Details

### General

|                |  |
|----------------|--|
| Status         | Active   |
| Category       | PCB Headers and Receptacles  |
| Series         | 172447   |
| Description    | Mini-Fit Jr. Header, Dual Row, Vertical, without Snap-in Plastic Peg PCB Lock, 2 Circuits, PA Polyamide Nylon 6/6 94V-2, Tin (Sn) Plating, Glow-Wire Capable |
| Application    | Power, Wire-to-Board   |
| Component Type | PCB Header   |
| Product Name   | Mini-Fit Jr.   |
| UPC            | 887191730158   |

### Agency

|     |         |
|-----|---------|
| CSA | LR19980 |
| UL  | E29179  |

### Electrical

|                               |                  |
|-------------------------------|------------------|
| Current - Maximum per Contact | 9.0A             |
| Voltage - Maximum             | 600V AC (RMS)/DC |

### Physical

|                    |       |
|--------------------|-------|
| Breakaway          | No    |
| Circuits (Loaded)  | 2     |
| Circuits (maximum) | 2     |
| Color - Resin      | Black |

|                                |                |
|--------------------------------|----------------|
| Durability (mating cycles max) | 30             |
| First Mate / Last Break        | No             |
| Flammability                   | 94V-2          |
| Glow-Wire Capable              | Yes            |
| Guide to Mating Part           | No             |
| Keying to Mating Part          | Yes            |
| Lock to Mating Part            | Yes            |
| Material - Metal               | Brass          |
| Material - Plating Mating      | Tin            |
| Material - Resin               | Nylon          |
| Net Weight                     | 0.623/g        |
| Number of Rows                 | 2              |
| Orientation                    | Vertical       |
| Packaging Type                 | Tray           |
| PCB Locator                    | Yes            |
| PCB Retention                  | None           |
| PCB Thickness - Recommended    | 1.60mm         |
| Pitch - Mating Interface       | 4.20mm         |
| Pitch - Termination Interface  | 4.20mm         |
| Polarized to Mating Part       | Yes            |
| Polarized to PCB               | Yes            |
| Shrouded                       | Fully          |
| Stackable                      | No             |
| Temperature Range - Operating  | -40° to +105°C |
| Termination Interface Style    | Through Hole   |

#### Solder Process Data

|                              |      |
|------------------------------|------|
| Max-Duration                 | 5    |
| Lead-Free Process Capability | WAVE |
| Max-Cycle                    | 1    |
| Max-Temp                     | 260  |

---

#### Mates With / Use With

Mates with Part(s)

| Description   | Part Number   |
|---|---------------|
| Mini-Fit Jr. Dual Row Receptacle Housings                     | <u>46992</u>  |
| Mini-Fit TPA2 and Mini-Fit Sigma Dual Row Receptacle Housings | <u>172708</u> |

---

This document was generated on Dec 24, 2024