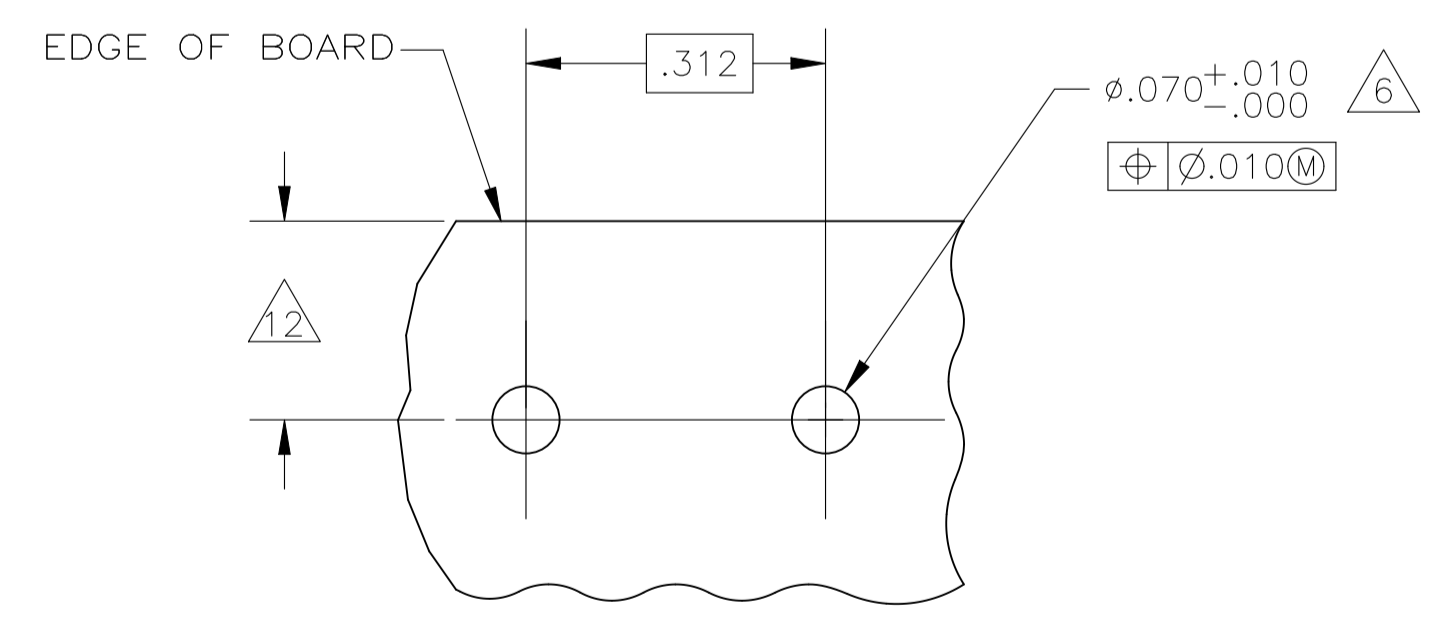
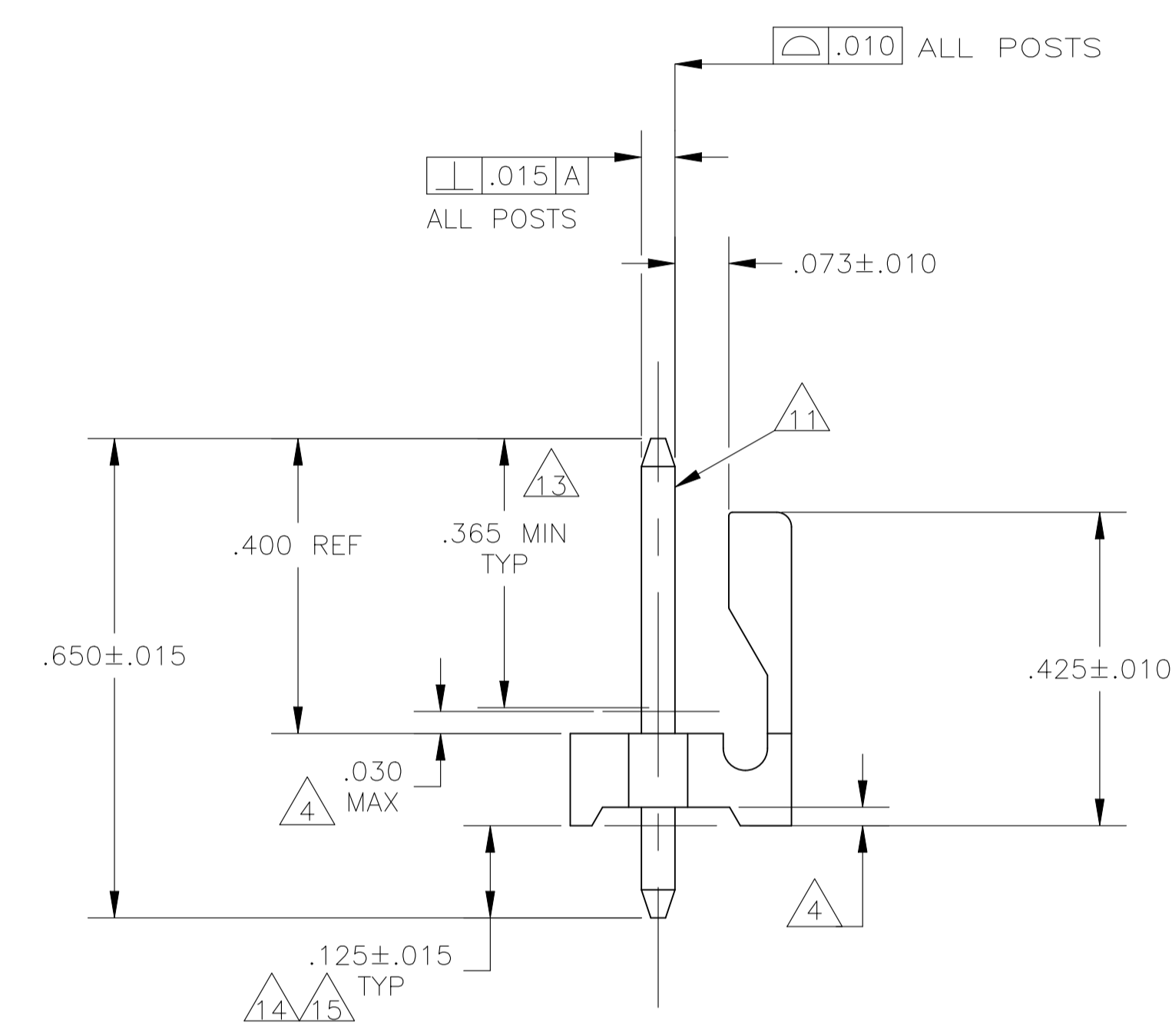
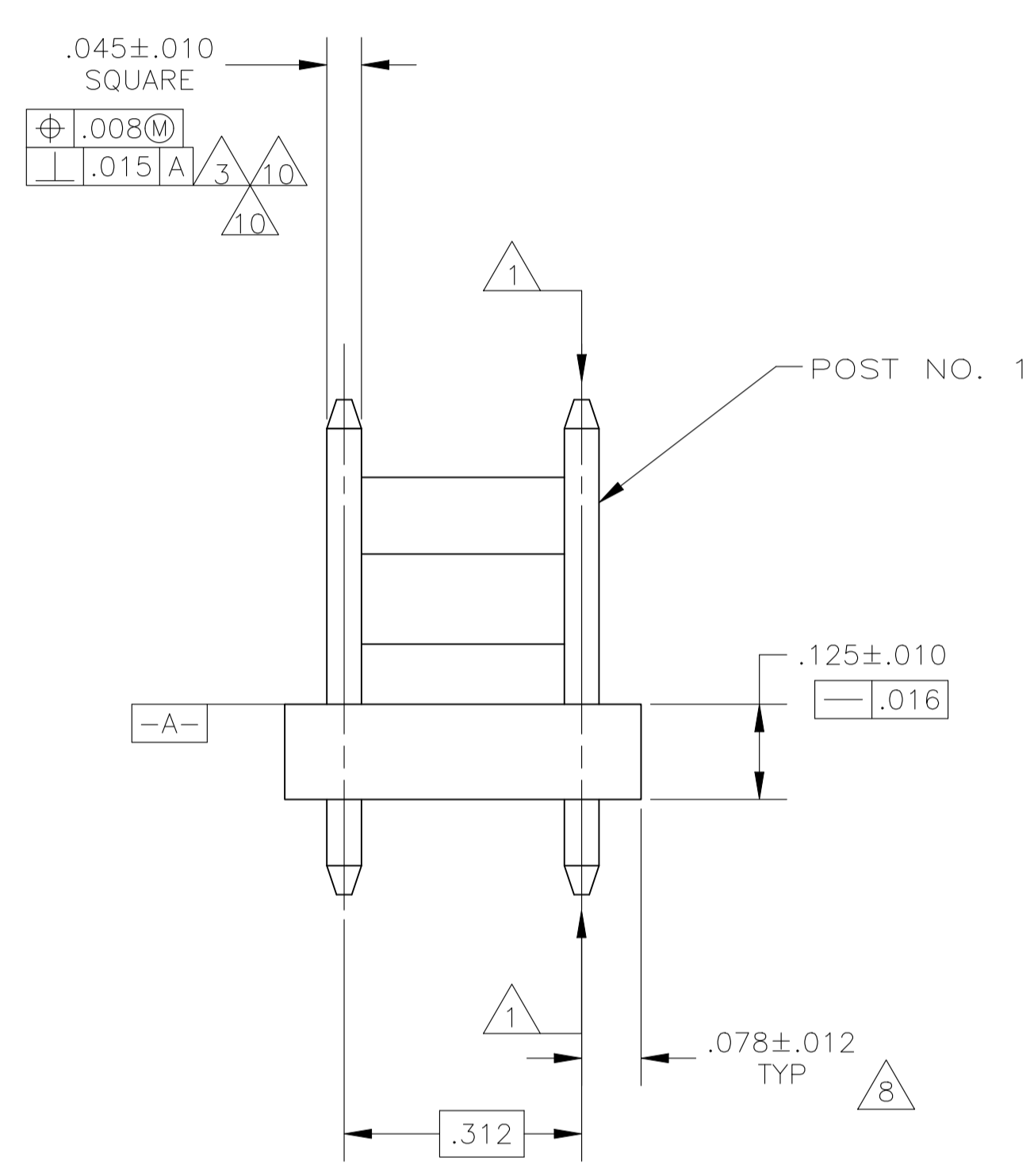
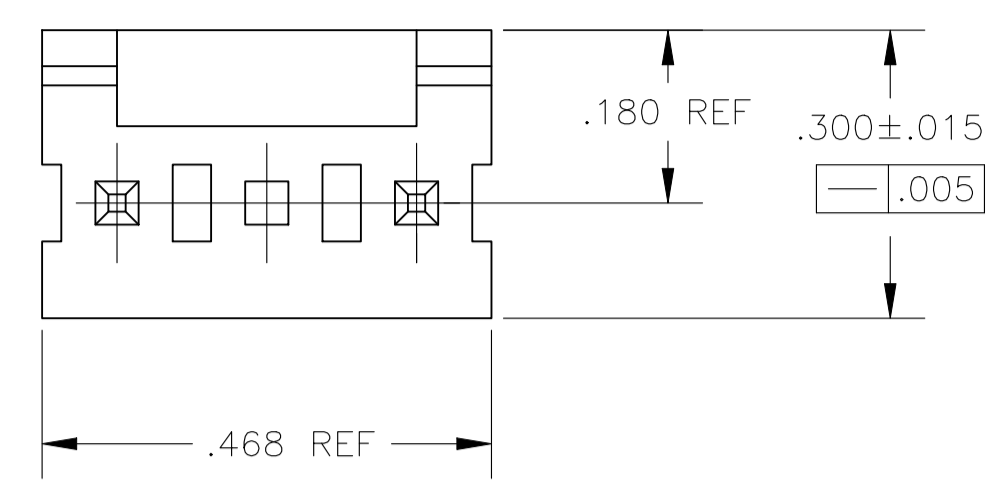


REVISIONS				
P	LTR	DESCRIPTION	DATE	BY
G		REVISED PER ECR 25-253172	09OCT2025	CM



RECOMMENDED MOUNTING HOLE PATTERN FOR .063 THICK P.C. BOARD

- 1 POST TO WITHSTAND 13 NEWTONS (3LBS.) MIN. AXIAL FORCE IN BOTH DIRECTIONS SHOWN WITHOUT DISLODGING.
- 2 TOLERANCES APPLY TO SOLDER SIDE OF BOARD.
- 3 MEASURED AT SURFACE
- 4 PLASTIC FLASH PERMITTED IN THIS AREA.
- 5 PARTS COMPLY WITH AMP SOLDERABILITY SPEC. NO. 109-11-2.
- 6 ONE HOLE MAY BE UNDERSIZED (.065/.060 DIA.) FOR ASSEMBLY RETENTION DURING WAVE SOLDERING.
- 7 MATERIAL: HEADER-THERMOPLASTIC POLYESTER
GLASS-FILLED 94V-0 (NATURAL)
POST-COPPER ALLOY (SEE NOTES 13 & 14 FOR PLATING)
- 8 COORDINATE DIMENSION APPLIES FROM CENTER OF ACTUAL FEATURE.
- 9 PLASTIC BURRS CAUSED BY CUT-OFF TOOLING ARE PERMITTED WITHIN THE MAXIMUM TOLERANCE ENVELOPE.
- 10 POST TO BE MEASURED WHEN STRIP IS HELD FLAT.
- 11 POST MUST WITHSTAND TWO 90° BENDS AGAINST EXTRUSION WITHOUT BREAKING.
- 12 DIMENSION SHOULD BE .175 MIN WHEN MATING WITH A MTA 156 CONNECTOR ASSEMBLY OR A SL-156 CONNECTOR ASSEMBLY.
- 13 PLATING: GOLD PLATE AREA, .000030 GOLD OR .000003 MIN GOLD FLASH OVER .000027 PALLADIUM NICKEL, ONLY IN FUNCTIONAL CONTACT AREA AND OTHER AREAS WITH OPTIMIZED THICKNESS PER TE CONNECTIVITY'S DISCRETION. ALL SIDES, OVER NICKEL UNDERPLATE, .000050 MIN, ALL SIDES AND ENTIRE LENGTH OF POST.
- 14 PLATING: BRIGHT TIN-LEAD (93/7) PLATE AREA .000150-.000350 THICK ALL FOUR SIDES .125 MINIMUM FOR -1.
- 15 MATTE TIN PLATE .000150-.000350 THICK ALL FOUR SIDES .125 FOR 3--1.

		1.560	39.62
.063	1.60	.650	16.51
.060	1.52	.624	15.85
.045	1.14	.400	10.16
.030	0.76	.425	10.80
.016	0.41	.365	9.27
.015	0.38	.312	7.92
.012	0.30	.300	7.62
.010	0.25	.180	4.57
.008	0.20	.175	4.45
.005	0.13	.156	3.96
.001	0.03	.125	3.18
.000350	0.00889	.078	1.98
.000150	0.00381	.070	1.78
.000050	0.00127	.068	1.73
.000030	0.00076	.065	1.65
[IN]	MM	[IN]	MM

CONVERSION TABLE

FINISH	2	3-644742-1
POST NO. OMITTED	2	644742-1
FINISH	POST NO. OMITTED	PART NUMBER

THIS DRAWING IS A CONTROLLED DOCUMENT.

DIMENSIONS: INCHES	TOLERANCES UNLESS OTHERWISE SPECIFIED:	0. PLC ± .005	1. PLC ± .005	2. PLC ± .005	3. PLC ± .005	4. PLC ± .005	ANGLES ± .005
--------------------	--	---------------	---------------	---------------	---------------	---------------	---------------

DIN S. HOOVER 07NOV02	TE Connectivity
CHK D. BOSSI 07NOV02	NAME
APP'D D. BOSSI 07NOV02	PRODUCT SPEC
APPLICATION SPEC	SIZE CAGE CODE DRAWING NO
WEIGHT	A1 00779 C=644742
CUSTOMER DRAWING	SCALE 5:1 SHEET 1 of 1 REV G