

10078995-G0X-XXULF

PLATING  
 0.76µm GXT (Pd Ni WITH GOLD FLASH)  
 1.27µm NICKEL MIN UNDERPLATE

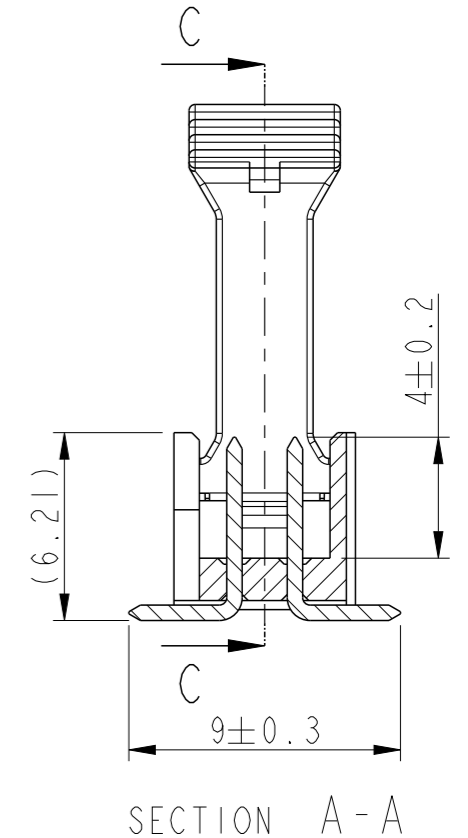
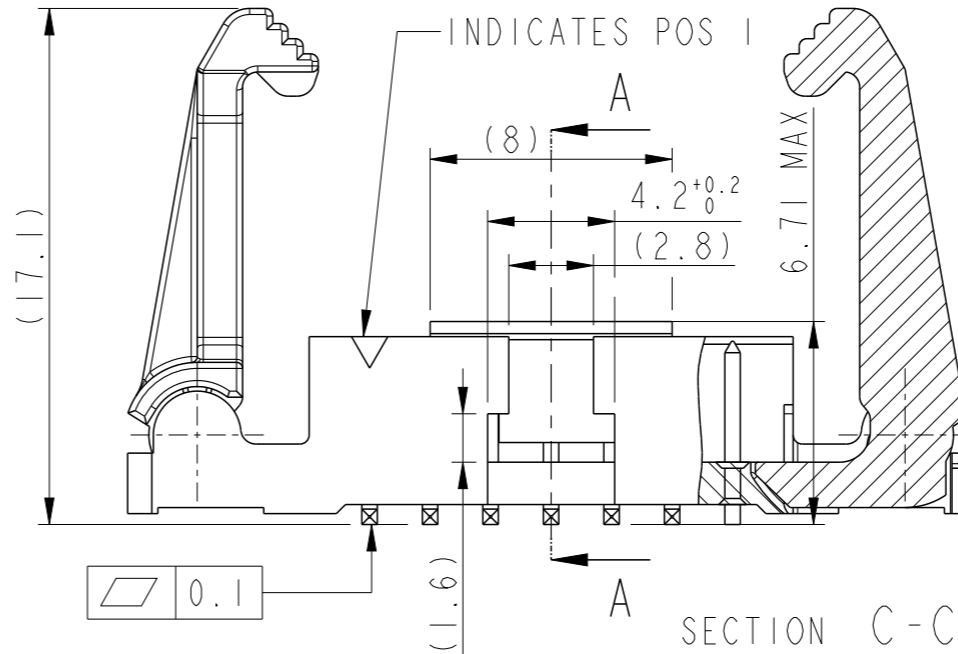
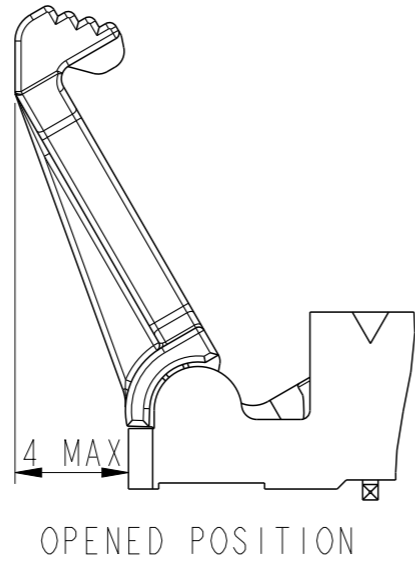
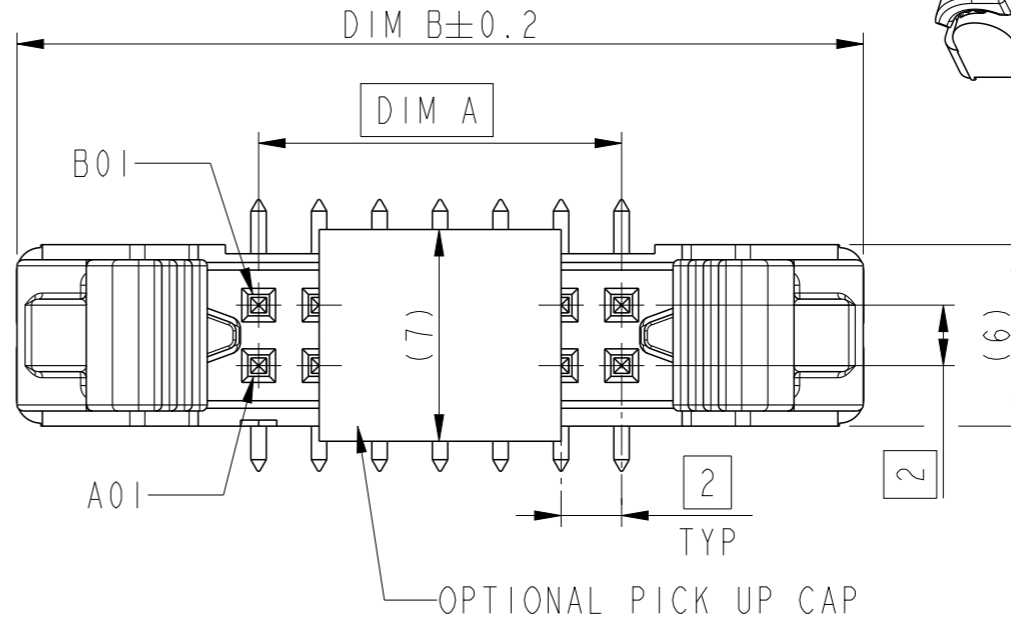
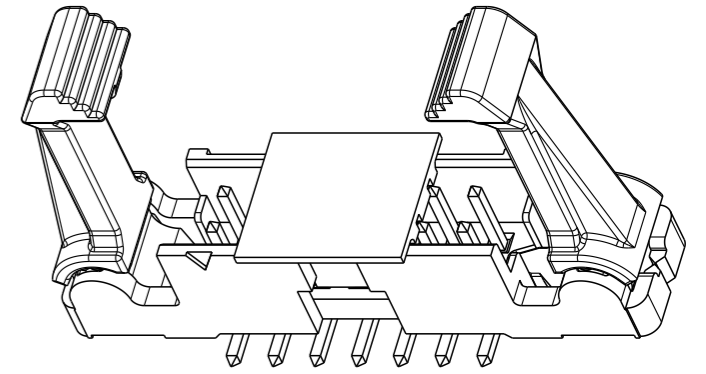
LATCH TYPE: \_\_\_\_\_  
 (AS AVAILABLE)  
 1-STANDARD : FOR USE WITH STRAIN-RELIEF 10073978  
 2-LOW PROFILE : FOR USE WITHOUT STRAIN-RELIEF

SIZE: TOTAL NB OF POSITIONS  
 (AS AVAILABLE)  
 SEE SHEET 2

PACKAGING, SEE NOTE 4  
 (MAY BE SUBJECT TO TOOLING FEES.)

RoHS COMPATIBLE, SEE NOTE 5

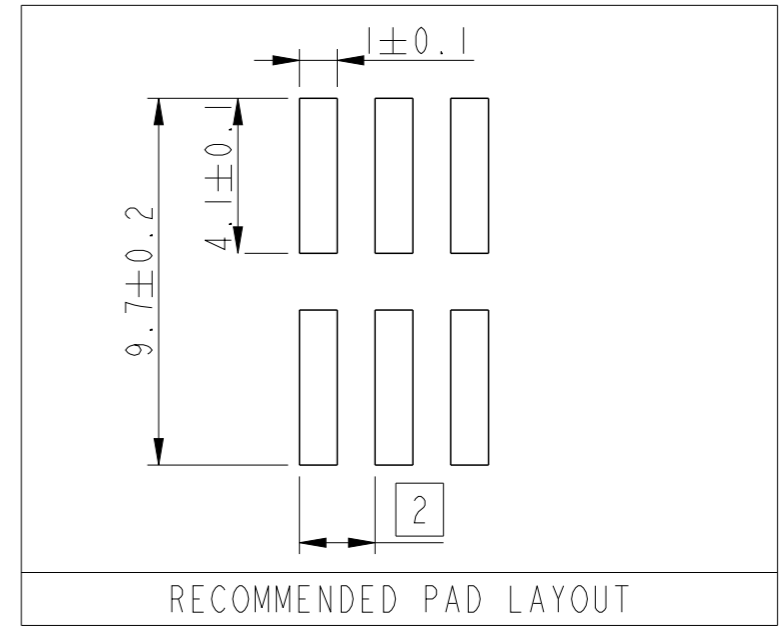
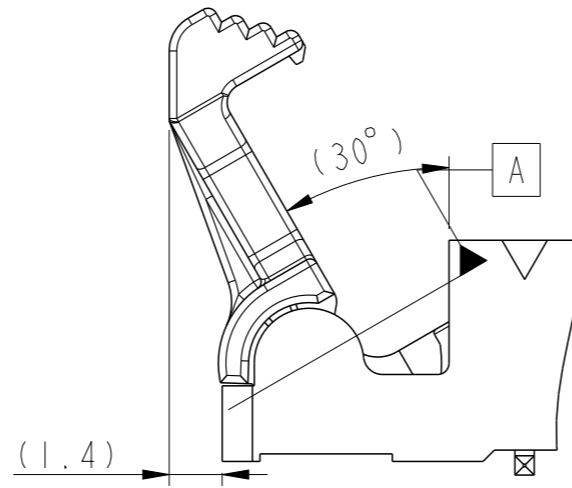
EXTENDED RANGE  
 - TOOLING FEASIBILITY CONFIRMED  
 - SAMPLES ON DEMAND  
 - AVAILABILITY ON DEMAND



- NOTES :
- MATERIAL HOUSING: HIGH TEMPERATURE THERMOPLASTIC UL 94 VO . COLOR CREAM.  
 - MATERIAL LATCH : HIGH TEMPERATURE THERMOPLASTIC UL 94 VO . COLOR BLACK.
  - MATERIAL TERMINAL : COPPER ALLOY
  - PIN RETENTION IN EITHER DIRECTION : 7N MIN
  - PACKAGING  
 U= TUBE WITHOUT PICK UP CAP.  
 B= TUBE WITH PICK UP CAP.  
 A= TAPE & REEL WITH PICK UP CAP.
  - RoHS COMPATIBLE PRODUCT SPECIFICATIONS :  
 a- PLATING :  
 "LF" MEANS THE PRODUCT IS LEAD FREE  
 2µm MINIMUM MATTE TIN ON TAIL  
 OVER 1.27 µm NICKEL UNDERPLATE  
 b- MANUFACTURING PROCESS COMPATIBILITY  
 THE HOUSING WILL WITHSTAND EXPOSURE TO 260°C PEAK TEMPERATURE FOR 30 SECONDS MAX IN A CONVECTION, INFRA RED, VAPOR PHASE OR REFLOW OVEN  
 c- LABELLING  
 MEETS PACKAGING SPECS AS PER GS-14-920.  
 d- THIS PRODUCT MEETS EUROPEAN DIRECTIVES AND OTHER COUNTRY REGULATION AS DESCRIBED IN GS-47-0004.
  - THIS PART SERIES IS NOT INITIALLY INTENDED FOR AUTOMOTIVE APPLICATIONS. ADDITIONAL FEES ARE CHARGEABLE FOR ANY ADDITIONAL QUALIFICATION AND TEST REPORTS PERFORMED OUTSIDE THE SCOPE OF THE STANDARD PRODUCT SPECIFICATIONS.
  - UNLESS OTHERWISE APPROVED BY AMPHENOL, ALL PARTS AND COMPONENTS ARE DESIGNED & BUILT ACCORDING TO AMPHENOL'S SPECIFICATIONS WHICH ARE SUBJECT TO CHANGE WITHOUT NOTICE.

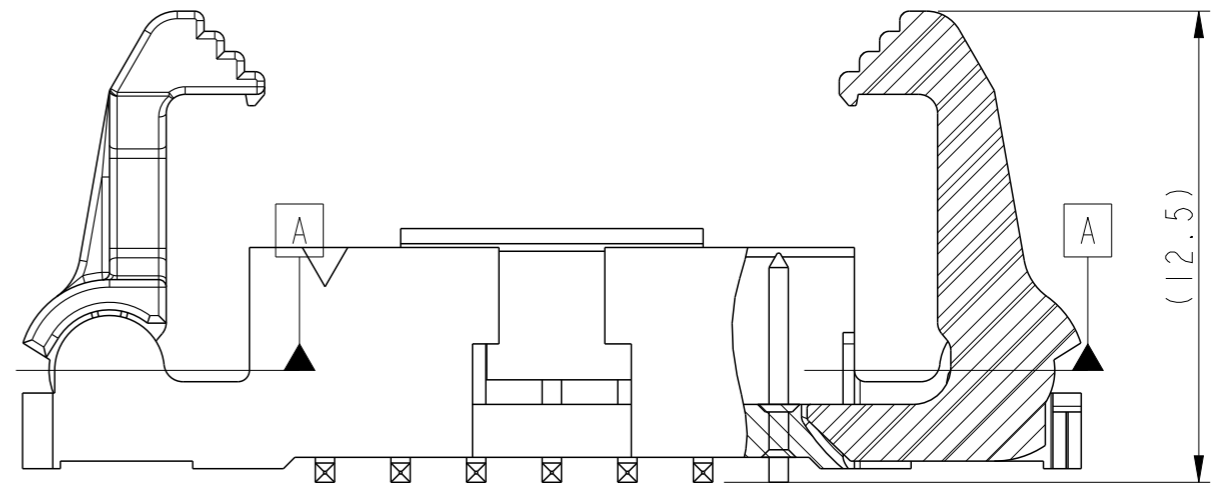
spec ref	-	dr	Sawanth, Ambaa	2020/12/10	projection	mm	size	A3	scale	4:1
tolerance std	ISO 406 ISO 1101	eng	Detouillon, Da	2025/02/04			ecn no	ELX-F-54251-1		
TOLERANCES UNLESS OTHERWISE SPECIFIED		chr	-	2025/02/05			product family	-	rel level	Released
surface	linear	0.X	±0.3	<b>Amphenol FCI</b>	EJECT LATCH HEADER		dwg no 10078995	rev		E
		0.XX	±0.10		VERTICAL SMT					
	angular	0°	±2°		cat. no.	-	Product - Customer Drw	sheet 1 of 2		

SIZE	POSITIONS	DIM A	DIM B
06	2x3	4.00	20.00
08	2x4	6.00	22.00
10	2x5	8.00	24.00
12	2x6	10.00	26.00
14	2x7	12.00	28.00
24	2x12	22.00	38.00
30	2x15	28.00	44.00
40	2x20	38.00	54.00
44	2x22	42.00	58.00
50	2x25	48.00	64.00



PRODUCT USED IN COMBINATION WITH IDC RECEPTACLE P/Ns 89361 & 89941

<p>WITH STRAIN RELIEF ACCESSORY -STANDARD LATCH-</p>	<p>WITHOUT STRAIN RELIEF ACCESSORY -LOW PROFILE LATCH-</p>
--	--



SECTION C-C

EXAMPLE 10078995-G02-14YLF  
LOW PROFILE LATCH

spec ref	-	dr	Sawanth, Ambaa	2020/12/10	projection	mm	size	A3	scale	5:1
tolerance std	ISO 406 ISO 1101	eng	Detouillon, Da	2025/02/04			ecn no	ELX-F-54251-1		
TOLERANCES UNLESS OTHERWISE SPECIFIED		chr	-	-			rel level	Released		
surface	linear	0.X	±0.3		product family	-	rel level	Released		
		0.XX	±0.10		dwg no	10078995			rev	E
	angular	0°	±2°		cat. no.	-	Product - Customer Drw	sheet 2 of 2		