

53942-1 ✓ ACTIVE

PIDG

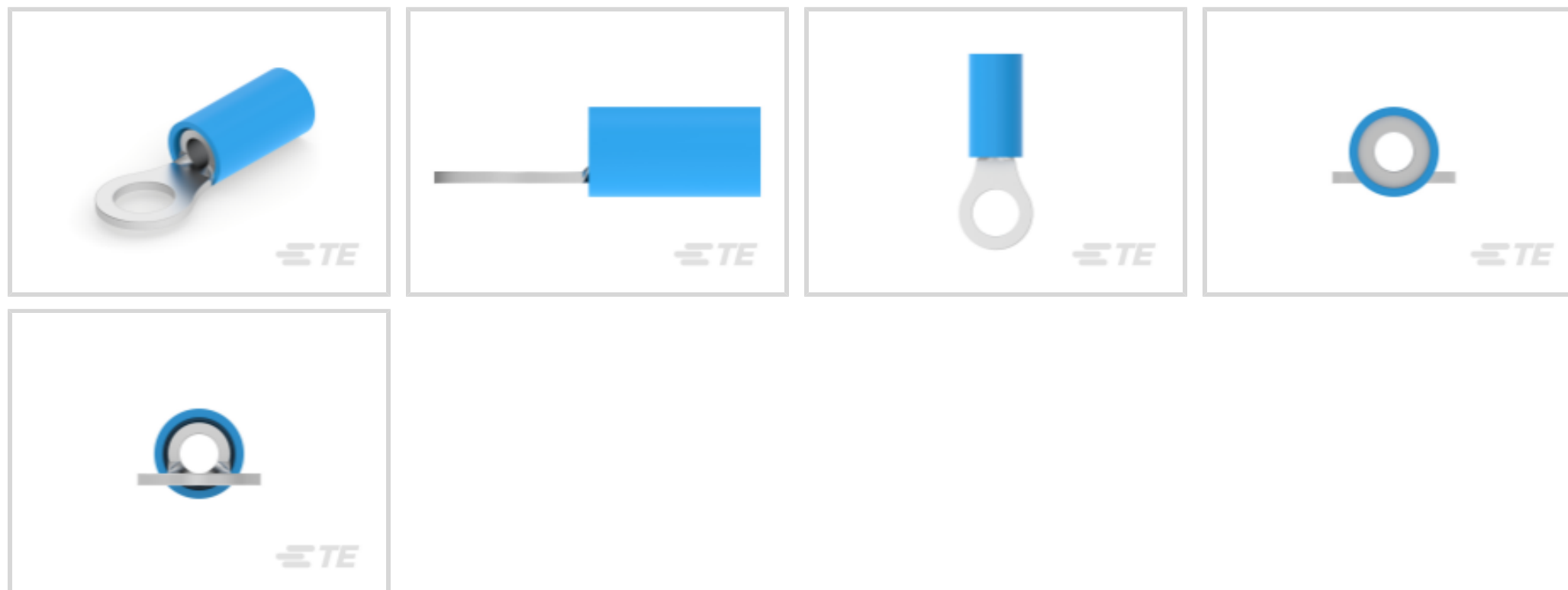
TE Internal #: 53942-1

Closed Ring Tongue Terminal, 16 AWG, #10 Stud Size, 5 mm [.197 in] Stud Diameter, Closed Barrel, Straight, Tin, Partially Insulated, PIDG

[View on TE.com >](#)



Terminals & Splices > Ring Terminals > PIDG Ring Tongue Terminals



Ring Terminal Product Type: Closed Ring Tongue Terminal

Wire Size: 2050 – 5180 CMA

Stud Size: #10

[All PIDG Ring Tongue Terminals \(410\)](#)

Features

Product Type Features

| | |
|--|-----------------------------|
| Ring Terminal Product Type | Closed Ring Tongue Terminal |
| Stud Size | #10 |
| Sealable | No |
| Wire Insulation Support Retention Type | Insulation Support |

Dimensions

| | |
|--------------------------------------|--------------------------------|
| Wire Size | 2050 – 5180 CMA |
| Stud Diameter | 5 mm [.197 in] |
| Tongue Thickness | .78 mm [.031 in] |
| Product Length | 20.65 mm [.813 in] |
| Compatible Insulation Diameter (Max) | 4.32 mm [.17 in] |
| Compatible Insulation Diameter Range | 2.92 – 4.31 mm [.115 – .17 in] |

Contact Features

| | |
|----------------------|----------|
| Barrel Type | Closed |
| Terminal Orientation | Straight |



| | |
|---------------------------|-----|
| Terminal Plating Material | Tin |
|---------------------------|-----|

Usage Conditions

| | |
|-----------------------------|---------------------|
| Insulation Option | Partially Insulated |
| Operating Temperature Range | 105 °C[221 °F] |

Operation/Application

| | |
|---------------------------------------|--------|
| Compatible With Wire Base Material | Copper |
| Compatible With Wire Plating Material | Tin |

Packaging Features

| | |
|--------------------|-------------|
| Packaging Method | Loose Piece |
| Packaging Quantity | 1 |

Other

| | |
|--------------------|-----------|
| EU RoHS Compliance | Compliant |
| EU ELV Compliance | Compliant |

Configuration Features

| | |
|-----------------|---|
| Number of Holes | 1 |
|-----------------|---|

Electrical Characteristics

| | |
|----------------|-------|
| Voltage Rating | 300 V |
|----------------|-------|

Body Features

| | |
|-------------------------|---------|
| Insulation Sleeve Color | Natural |
|-------------------------|---------|

Mechanical Attachment

| | |
|-------------------------|------|
| Wire Insulation Support | With |
|-------------------------|------|

Industry Standards

| | |
|-------------------------------|----|
| Government Qualified Terminal | No |
|-------------------------------|----|

Product Compliance

[For compliance documentation, visit the product page on TE.com>](#)

| | |
|---|---|
| EU RoHS Directive 2011/65/EU | Compliant |
| EU ELV Directive 2000/53/EC | Compliant |
| China RoHS 2 Directive MIIT Order No 32, 2016 | No Restricted Materials Above Threshold |
| EU REACH Regulation (EC) No. 1907/2006 | Current ECHA Candidate List: JUNE 2024 (241) |



Candidate List Declared Against: JUNE 2024 (241)

Does not contain REACH SVHC

Halogen Content

Low Halogen - Br, Cl, F, I < 900 ppm per homogenous material. Also BFR/CFR/PVC Free

Solder Process Capability

Not applicable for solder process capability

Product Compliance Disclaimer

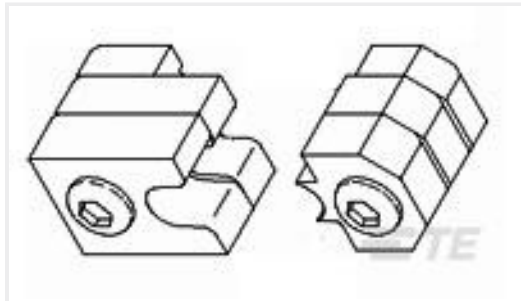
This information is provided based on reasonable inquiry of our suppliers and represents our current actual knowledge based on the information they provided. This information is subject to change. The part numbers that TE has identified as EU RoHS compliant have a maximum concentration of 0.1% by weight in homogenous materials for lead, hexavalent chromium, mercury, PBB, PBDE, DBP, BBP, DEHP, DIBP, and 0.01% for cadmium, or qualify for an exemption to these limits as defined in the Annexes of Directive 2011/65/EU (RoHS2). Finished electrical and electronic equipment products will be CE marked as required by Directive 2011/65/EU. Components may not be CE marked. Additionally, the part numbers that TE has identified as EU ELV compliant have a maximum concentration of 0.1% by weight in homogenous materials for lead, hexavalent chromium, and mercury, and 0.01% for cadmium, or qualify for an exemption to these limits as defined in the Annexes of Directive 2000/53/EC (ELV). Regarding the REACH Regulation, the information TE provides on SVHC in articles for this part number is based on the latest European Chemicals Agency (ECHA) 'Guidance on requirements for substances in articles' posted at this URL: <https://echa.europa.eu/guidance-documents/guidance-on-reach>

Compatible Parts





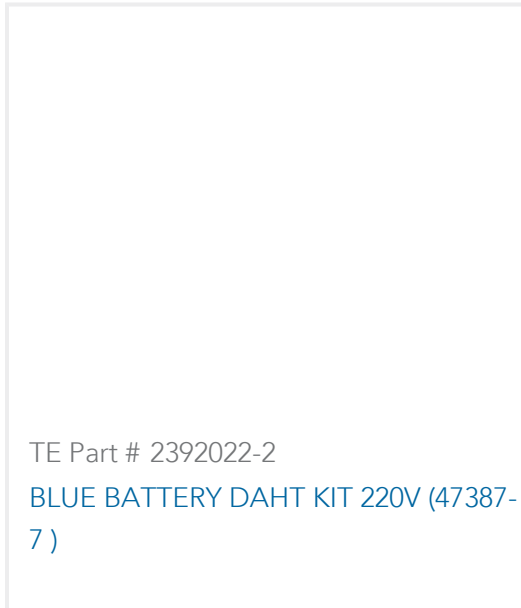
TE Part # 2063030-1
SDE DIESET, RBY, UL



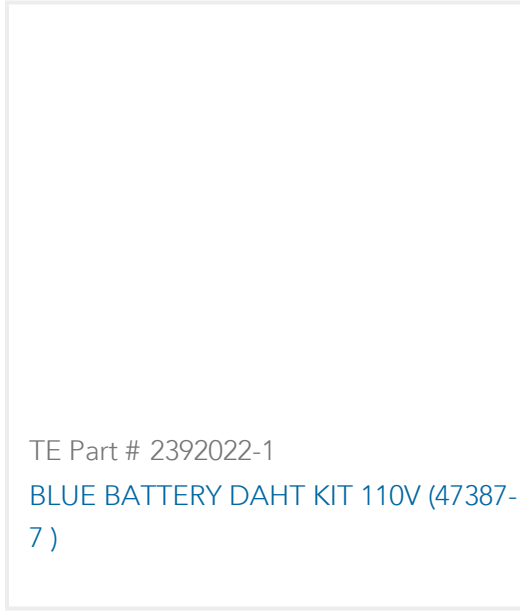
TE Part # 47807-1
DIES PIDG 16-14 DIE SET



TE Part # 169400
CERTI-LOK FRAME W/O DIES



TE Part # 2392022-2
BLUE BATTERY DAHT KIT 220V (47387-7)



TE Part # 2392022-1
BLUE BATTERY DAHT KIT 110V (47387-7)

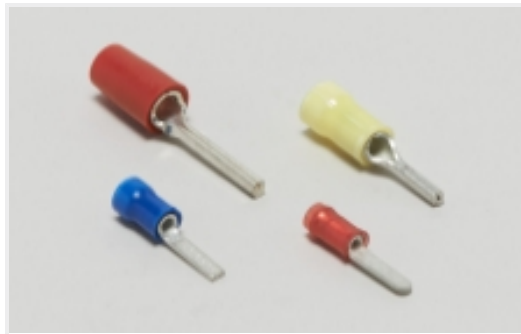


TE Part # 169404
CERTI-LOK DIE

Also in the Series | PIDG



Compression Connectors(17)



Crimp Wire Pins, Tabs & Ferrules(41)



Hand Crimping Tools(2)



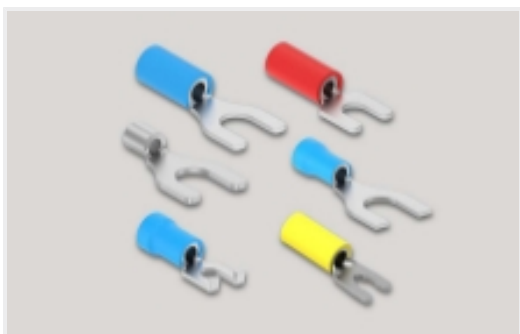
Knife Disconnects(11)



Quick Disconnects(32)



Ring Terminals(588)



Spade Terminals(228)



Special Purpose Terminals(1)



Splices(39)

Customers Also Bought



TE Part #5748873-1
AMP III PLUG 25P RA 590 THD IN



TE Part #324915
TERMINAL,PIDG R 12-10 8



TE Part #6609065-3
6EDP=F7689 S0



TE Part #2-32053-1
PIDG SPD 22-16 COMM 22-18MIL 8



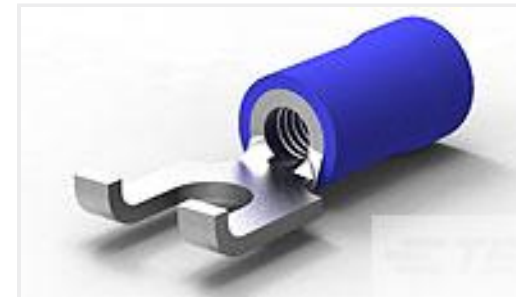
TE Part #747872-8
15 PLUG SP/FMS INSRT



TE Part #1-1761607-3
IDC LOW PRO HDR 40P RA LG LAT
BLK



TE Part #34203
PG BUTT SPLC 22-16COMM22-18MIL



TE Part #324165
TERMINAL,PG SPD FLG 16-14 6



TE Part #2-1445088-3
MICRO MNL HDR ASSY S/ROW AU LF



TE Part #1419106-4
27E046=SOCKET,KU,11,PC,NYL,NAT

Documents

Product Drawings

[TERMINAL,PIDG R 16-14 10](#)

English

CAD Files

[3D PDF](#)

3D

Customer View Model

[ENG_CVM_CVM_53942-1_C.2d_dxf.zip](#)

English

Customer View Model

[ENG_CVM_CVM_53942-1_C.3d_igs.zip](#)

English

Customer View Model

[ENG_CVM_CVM_53942-1_C.3d_stp.zip](#)

English

[3D PDF](#)

English



Customer View Model

[ENG_CVM_53942-1_A.3d_igs.zip](#)

English

Customer View Model

[ENG_CVM_53942-1_A.3d_stp.zip](#)

English

Customer View Model

[ENG_CVM_53942-1_A.2d_dxf.zip](#)

English

By downloading the CAD file I accept and agree to the [Terms and Conditions](#) of use.

Instruction Sheets

[Instruction Sheet \(U.S.\)](#)

English

Agency Approvals

[UL Report](#)

English