

53246-2 ✓ ACTIVE

PLASTI-GRIP

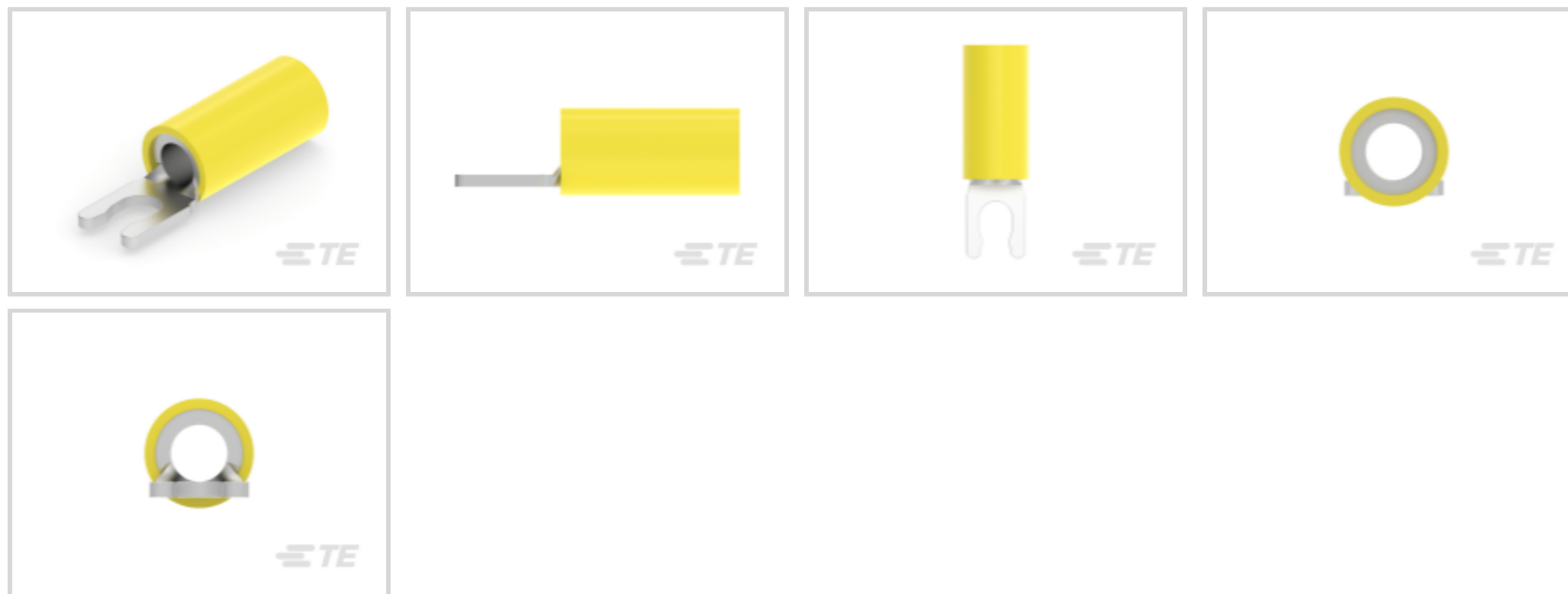
TE Internal #: 53246-2

Spring Spade Terminal, 12 – 10 AWG, #6 / M3.5 Stud Size, 3.56 mm [.14 in] Stud Diameter, Closed Barrel, Straight, Tin, PLASTI-GRIP

[View on TE.com >](#)



Terminals & Splices > Spade Terminals



Spade Terminal Type: **Spring Spade Terminal**

Wire Size: **5180 – 13100 CMA**

Stud Size: **#6, M3.5**

### Features

#### Contact Features

Spade Terminal Type	Spring Spade Terminal
Barrel Type	Closed
Terminal Orientation	Straight
Terminal Plating Material	Tin

#### Dimensions

Wire Size	5180 – 13100 CMA
Stud Diameter	3.56 mm [.14 in]
Tongue Thickness	1.02 mm [.04 in]
Product Length	24.36 mm [.959 in]
Compatible Insulation Diameter (Max)	6.35 mm [.25 in]
Compatible Insulation Diameter Range	3.81 – 6.35 mm [.15 – .25 in]

#### Product Type Features

Stud Size	#6, M3.5
Sealable	No
Wire Insulation Support Retention Type	Insulation Support

#### Usage Conditions



Insulation Option	Partially Insulated
-------------------	---------------------

Operating Temperature Range	105 °C[221 °F]
-----------------------------	----------------

### Operation/Application

Compatible With Wire Base Material	Copper
------------------------------------	--------

Compatible With Wire Plating Material	Tin
---------------------------------------	-----

### Packaging Features

Packaging Method	Tape Mounted
------------------	--------------

Packaging Quantity	2500
--------------------	------

### Other

EU RoHS Compliance	Compliant
--------------------	-----------

EU ELV Compliance	Compliant
-------------------	-----------

### Electrical Characteristics

Voltage Rating	600 V
----------------	-------

### Body Features

Insulation Sleeve Color	Yellow
-------------------------	--------

Stripe Color	Yellow
--------------	--------

### Mechanical Attachment

Wire Insulation Support	With
-------------------------	------

### Industry Standards

Government Qualified Terminal	No
-------------------------------	----

### Product Compliance

[For compliance documentation, visit the product page on TE.com>](#)

EU RoHS Directive 2011/65/EU	Compliant
------------------------------	-----------

EU ELV Directive 2000/53/EC	Compliant
-----------------------------	-----------

China RoHS 2 Directive MIIT Order No 32, 2016	No Restricted Materials Above Threshold
---	---

EU REACH Regulation (EC) No. 1907/2006	Current ECHA Candidate List: JUNE 2024 (241) Candidate List Declared Against: JUNE 2024 (241) Does not contain REACH SVHC
--	---

Halogen Content	Not Low Halogen - contains Br or Cl > 900 ppm.
-----------------	--

Solder Process Capability	Not applicable for solder process capability
---------------------------	--

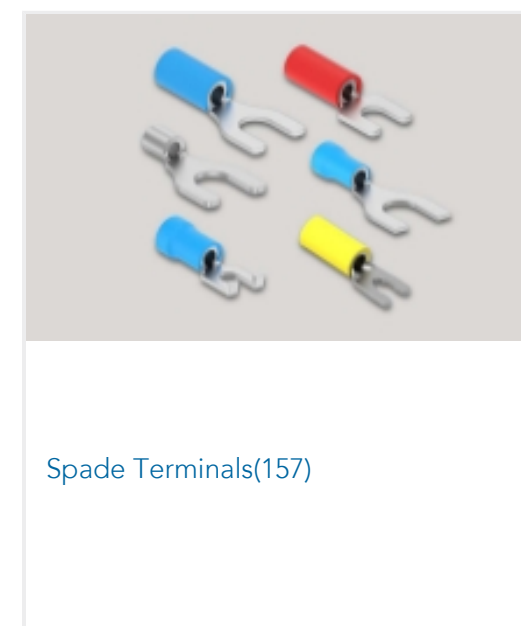
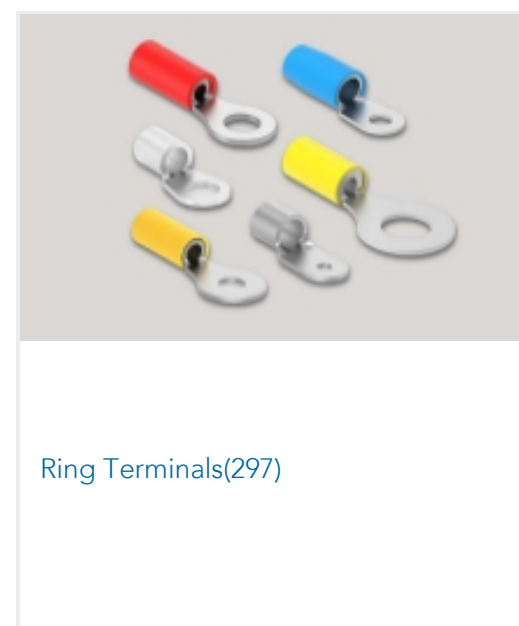
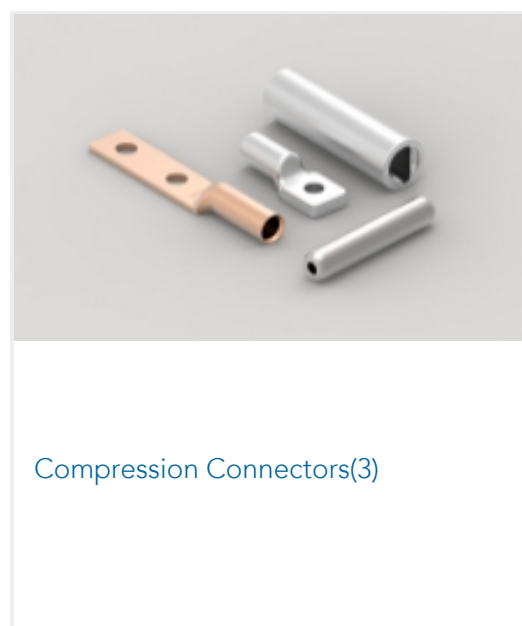
#### Product Compliance Disclaimer

This information is provided based on reasonable inquiry of our suppliers and represents our current actual knowledge based on the information they provided. This information is subject to change. The part numbers that TE has identified as EU RoHS compliant have a maximum concentration of 0.1% by weight in homogenous materials for lead, hexavalent chromium, mercury, PBB, PBDE, DBP, BBP, DEHP, DIBP, and 0.01% for cadmium, or qualify for an exemption to these limits as defined in the Annexes of Directive 2011/65/EU (RoHS2). Finished electrical and electronic equipment products will be CE marked as required by Directive 2011/65/EU. Components may not be CE marked. Additionally, the part numbers that TE has identified as EU ELV compliant have a maximum concentration of 0.1% by weight in homogenous materials for lead, hexavalent chromium, and mercury, and 0.01% for cadmium, or qualify for an exemption to these limits as defined in the Annexes of Directive 2000/53/EC (ELV). Regarding the REACH Regulation, the information TE provides on SVHC in articles for this part number is based on the latest European Chemicals Agency (ECHA) 'Guidance on requirements for substances in articles' posted at this URL: <https://echa.europa.eu/guidance-documents/guidance-on-reach>

## Compatible Parts



## Also in the Series | PLASTI-GRIP





Splices(44)

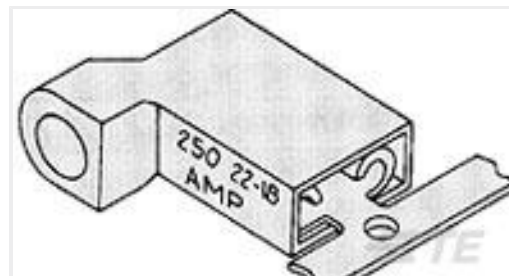
## Customers Also Bought



TE Part #4-640440-4  
14P MTA100 CONN ASSY 22AWG RED



TE Part #321262  
TERM, SOLIS, RT, 22-16, #6, 90 BEND



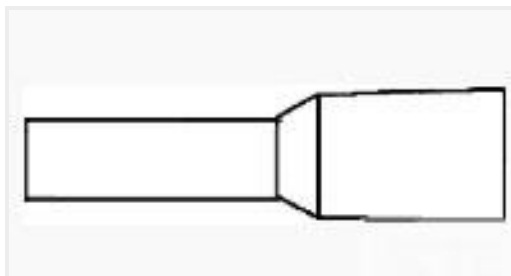
TE Part #3-520133-2  
ULTRA-FAST 250 ASY REC 16-14 AWG  
TPBR



TE Part #42281-2  
FF 250 REC 18-14AWG TPBR



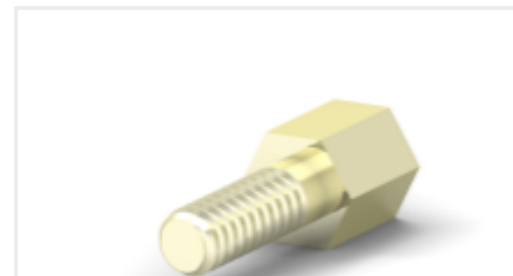
TE Part #52955-1  
TERMINAL, PG SPR SPD 16-14 6



TE Part #2-966292-7  
FER, WIRE, PL SLV, 6.00/10, L12, GREEN,  
LP



TE Part #5-103951-3  
5X4 MTE PIN SR RIBBED .100CL



TE Part #1393560-5  
C42334A 383C911=SUB D BOLZEN A



TE Part #BEA120N00000241000  
923 RECEPTACLE, SPEEDTEC-READY



TE Part #2299286-1  
POD-LOK 187 STR. AWG 24-20 PTPBR  
GF

## Documents

### Product Drawings

[TERMINAL, PG SPR SPD 12-10 6](#)

English

### CAD Files

[3D PDF](#)

3D

[Customer View Model](#)

[ENG\\_CVM\\_CVM\\_53246-2\\_K.2d\\_dxf.zip](#)



English

Customer View Model

[ENG\\_CVM\\_CVM\\_53246-2\\_K.3d\\_igs.zip](#)

English

Customer View Model

[ENG\\_CVM\\_CVM\\_53246-2\\_K.3d\\_stp.zip](#)

English

By downloading the CAD file I accept and agree to the [Terms and Conditions](#) of use.

**Product Specifications**

[Application Specification](#)

English