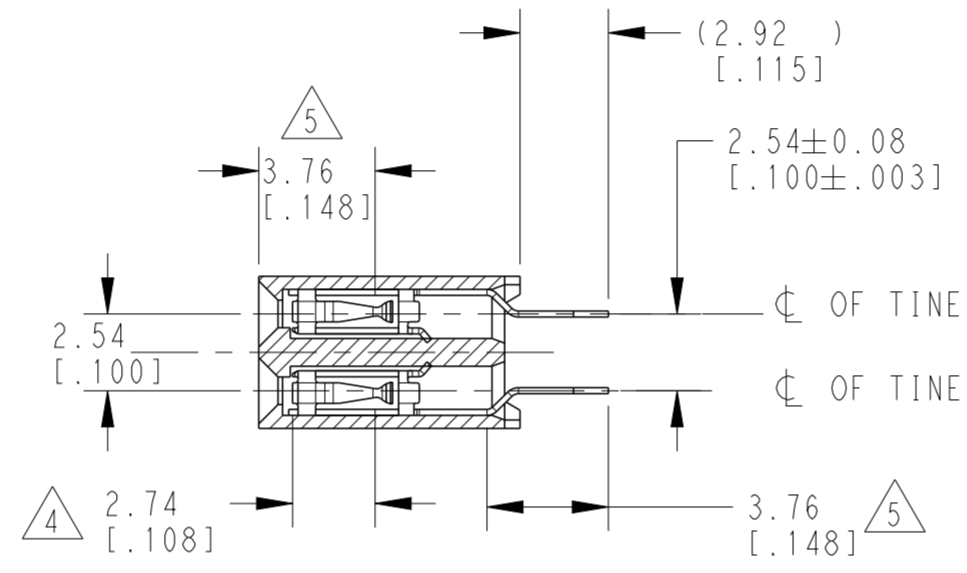
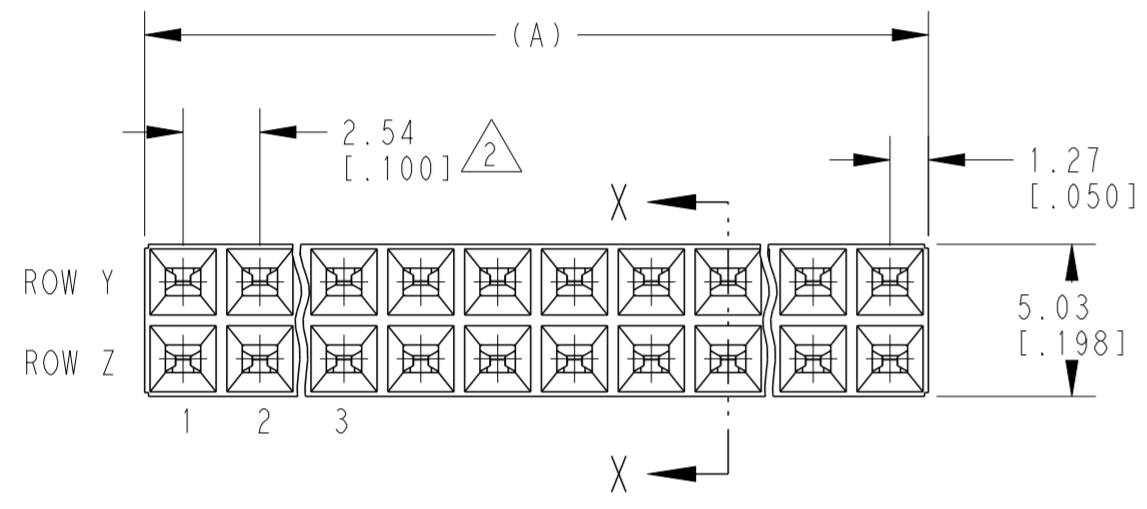
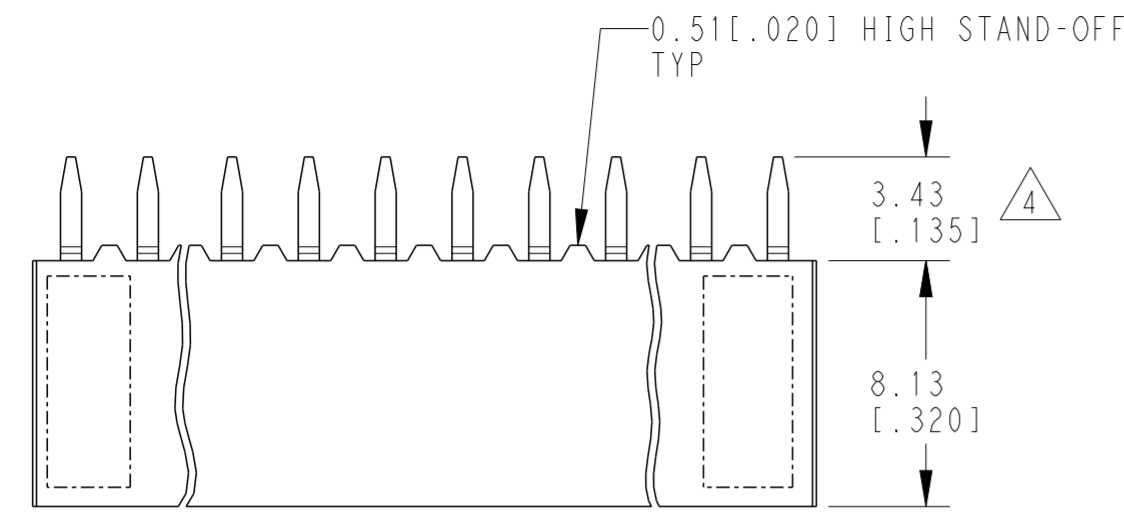
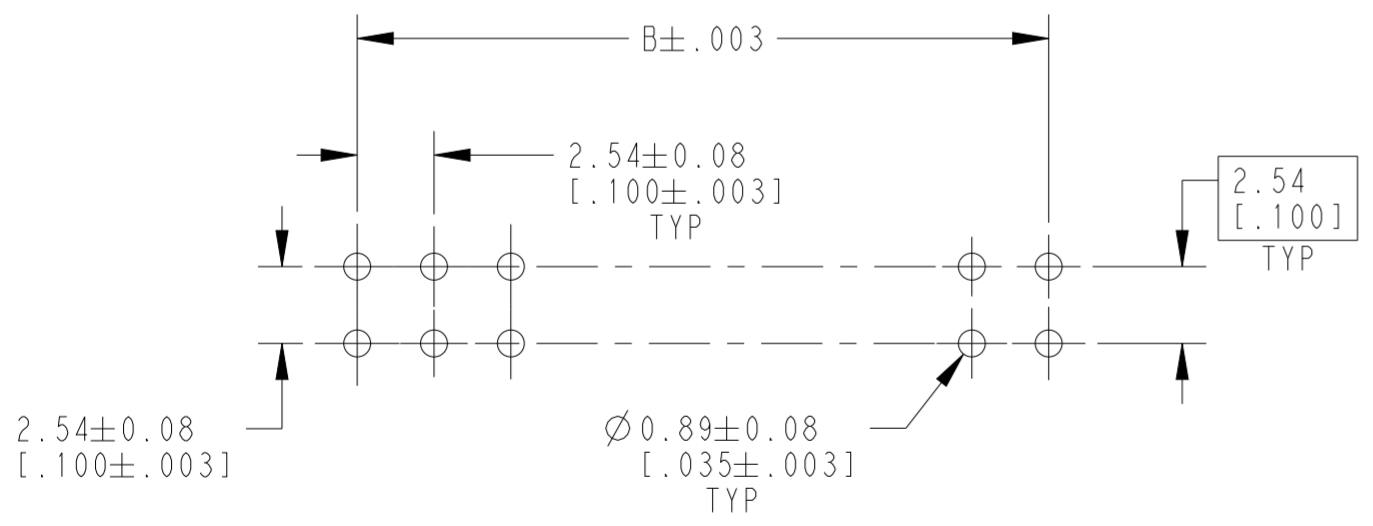


P	LTR	DESCRIPTION	DATE	DWN	APVD
G		RESIN SUPPLIER CHANGE FOR THE HOUSING	03DEC2021	SCB	KJK
H		RIB FEATURE IS ADDED IN THE STANDOFF FEATURE	25MAR2026	LS	GVP



SECTION X-X



RECOMMENDED HOLE LAYOUT

- 1 PART NUMBER AND DATE CODE MARKED IN APPROXIMATE LOCATION SHOWN
- 2 CONTACT: DUPLEX PLATED: 0.000254 [.000010] GOLD ON CONTACT AREA, 0.00381-0.00762 [.000150 - .000300] BRIGHT TIN-LEAD ON SOLDER LEADS, ALL OVER 0.00127 [.000050] MINIMUM NICKEL.
- 3 TOLERANCE IS NON-CUMULATIVE.
- 4 POINT OF MEASUREMENT FOR PLATING THICKNESS (MEASURED INSIDE CONTACT BEAMS)
- 5 POINT OF CONTACT MEASUREMENT.
- 6 MATERIAL: HOUSING: GLASS FILLED POLYESTER-COLOR: BLACK CONTACT: PHOSPHOR BRONZE
- 7 CONTACT: DUPLEX PLATED: 0.000254 [.000010] GOLD ON CONTACT AREA, 0.00381-0.00762 [.000150 - .000300] MATE TIN ON SOLDER LEADS, ALL OVER 0.00127 [.000050] MINIMUM NICKEL.
- 8 ROHS 2002/95/EC COMPLIANT
- 9 TE LOGO AND CSA LOGO ARE MOLDED INTO HOUSING, THIS LOCATION.
- 10 OBSOLETE PARTS: OBSOLETE CIS STREAMLINING PER D.RENAUD/D.SINISI

	52	1,2,29830	1,2,29830	7	76.20[3.000]	73.66[2.900]	60	5-102766-4
OBSOLETE	44	1,2,25826	1,2,25826	7	66.04[2.600]	63.50[2.500]	52	5-102766-3
	30	1,2,18819	1,2,18819	7	48.26[1.900]	45.72[1.800]	38	5-102766-2
	40	1,2,23824	1,2,23824	7	60.96[2.400]	58.42[2.300]	48	5-102766-1
OBSOLETE	52	1,2,29830	1,2,29830	2	76.20[3.000]	73.66[2.900]	60	102766-4
	44	1,2,25826	1,2,25826	2	66.04[2.600]	63.50[2.500]	52	102766-3
	30	1,2,18819	1,2,18819	2	48.26[1.900]	45.72[1.800]	38	102766-2
SUPERCEDED	40	1,2,23824	1,2,23824	2	60.96[2.400]	58.42[2.300]	48	102766-1
	NO ACTIVE POS	ROW Y	ROW Z	FINISH	A	B	NO. OF POSITION	PART NUMBER
		CONTACTS OMITTED						

THIS DRAWING IS A CONTROLLED DOCUMENT.

DWN	14-5-81
CHK	14-5-81
APVD	20-5-81

STE TE Connectivity

NAME: CONNECTOR ASSY., MOD II/IV
DOUBLE ROW, .100 X .100 C/L, VERTICAL MOUNTED

SIZE	A2	CAGE CODE	00779	DRAWING NO	C-102766	RESTRICTED TO	-
WEIGHT	-	SCALE	4:1	SHEET	1 OF 1	REV	H

CUSTOMER DRAWING