

1-1747067-6 ✓ ACTIVE



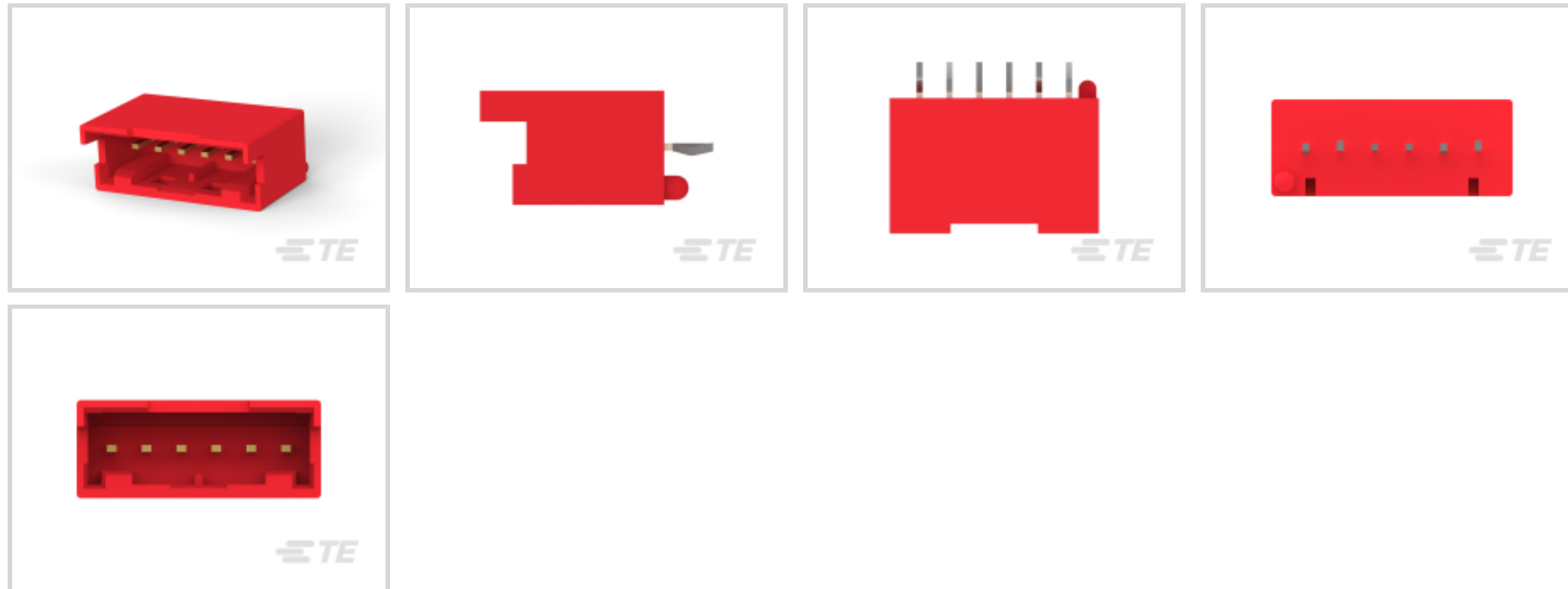
## GRACE INERTIA 2.5

TE Internal #: 1-1747067-6

PCB Mount Header, Vertical, Wire-to-Board, 6 Position, 2.5 mm [.098 in] Centerline, Fully Shrouded, Gold, Through Hole - Solder, GRACE INERTIA 2.5

[View on TE.com >](#)

Connectors > PCB Connectors > PCB Headers & Receptacles



EU RoHS Compliance: **Compliant**

EU ELV Compliance: **Compliant**

PCB Connector Assembly Type: **PCB Mount Header**

PCB Mount Orientation: **Vertical**

Connector System: **Wire-to-Board**

### Features

#### Other

EU RoHS Compliance	Compliant
EU ELV Compliance	Compliant

#### Product Type Features

PCB Connector Assembly Type	PCB Mount Header
Connector System	Wire-to-Board
Header Type	Fully Shrouded
Sealable	No
Connector & Contact Terminates To	Printed Circuit Board

#### Configuration Features

PCB Mount Orientation	Vertical
Number of Positions	6
Number of Rows	1

#### Electrical Characteristics

Operating Voltage	50 VDC
-------------------	--------



### Body Features

Primary Product Color	Red
-----------------------	-----

### Contact Features

Contact Underplating Material	Nickel
Contact Underplating Material Thickness	1.27 $\mu\text{m}$ [50 $\mu\text{in}$ ]
PCB Contact Termination Area Plating Material Finish	Matte
Contact Mating Area Plating Material Thickness	.3 $\mu\text{m}$ [11.81 $\mu\text{in}$ ]
Mating Tab Width	.7 mm[.028 in]
PCB Contact Termination Area Plating Material Thickness	2 $\mu\text{m}$ [78.74 $\mu\text{in}$ ]
Contact Layout	Inline
Contact Base Material	Brass
Mating Tab Thickness	.5 mm[.02 in]
PCB Contact Termination Area Plating Material	Tin
Contact Mating Area Plating Material	Gold
Contact Type	Tab
Contact Current Rating (Max)	3 A

### Termination Features

Termination Post & Tail Length	3 mm[.118 in]
Square Termination Post & Tail Dimension	.5 mm[.02 in]
Termination Method to PCB	Through Hole - Solder

### Mechanical Attachment

Panel Mount Feature	Without
Mating Retention Type	Latch
Mating Retention	With
Mating Alignment Type	Polarization
PCB Mount Retention Type	Kinked
PCB Mount Alignment Type	Boss
PCB Mount Retention	With
PCB Mount Alignment	With
Connector Mounting Type	Board Mount
Mating Alignment	With

### Housing Features



Housing Material	6/6 Nylon GF
------------------	--------------

Centerline (Pitch)	2.5 mm [.098 in]
--------------------	------------------

### Dimensions

Connector Width	6.8 mm [.26 in]
-----------------	-----------------

PCB Thickness (Recommended)	1.6 mm [.063 in]
-----------------------------	------------------

Connector Height	11.3 mm [.444 in]
------------------	-------------------

Connector Length	17.5 mm [.688 in]
------------------	-------------------

### Usage Conditions

Operating Temperature Range	-30 – 105 °C [-22 – 221 °F]
-----------------------------	-----------------------------

### Operation/Application

Circuit Application	Signal
---------------------	--------

### Industry Standards

Glow Wire Rating	Standard Part - Not Glow Wire
------------------	-------------------------------

UL Flammability Rating	UL 94V-0
------------------------	----------

### Packaging Features

Packaging Quantity	200
--------------------	-----

Packaging Method	Bag
------------------	-----

### Product Compliance

[For compliance documentation, visit the product page on TE.com>](#)

EU RoHS Directive 2011/65/EU	Compliant
------------------------------	-----------

EU ELV Directive 2000/53/EC	Compliant
-----------------------------	-----------

China RoHS 2 Directive MIIT Order No 32, 2016	No Restricted Materials Above Threshold
-----------------------------------------------	-----------------------------------------

EU REACH Regulation (EC) No. 1907/2006	Current ECHA Candidate List: JUNE 2024 (241) Candidate List Declared Against: JUNE 2024 (241) Does not contain REACH SVHC
----------------------------------------	---------------------------------------------------------------------------------------------------------------------------------

Halogen Content	Low Halogen - Br, Cl, F, I < 900 ppm per homogenous material. Also BFR/CFR/PVC Free
-----------------	-------------------------------------------------------------------------------------

Solder Process Capability	Wave solder capable to 265°C
---------------------------	------------------------------

Product Compliance Disclaimer

This information is provided based on reasonable inquiry of our suppliers and represents our current actual knowledge based on the information they provided. This information is subject to change. The part numbers that TE has identified as EU RoHS compliant have a maximum concentration of 0.1% by weight in homogenous materials for lead, hexavalent chromium, mercury, PBB, PBDE, DBP, BBP, DEHP, DIBP, and 0.01% for cadmium, or qualify for an exemption to these limits as defined in the Annexes of Directive 2011/65/EU (RoHS2). Finished electrical and electronic equipment products will be CE marked as required by Directive 2011/65/EU. Components may not be CE marked. Additionally, the part numbers that TE has identified as EU ELV compliant have a maximum concentration of 0.1% by weight in homogenous materials for lead, hexavalent chromium, and mercury, and 0.01% for cadmium, or qualify for an exemption to these limits as defined in the Annexes of Directive 2000/53/EC (ELV). Regarding the REACH Regulation, the information TE provides on SVHC in articles for this part number is based on the latest European Chemicals Agency (ECHA) 'Guidance on requirements for substances in articles' posted at this URL: <https://echa.europa.eu/guidance-documents/guidance-on-reach>

## Compatible Parts



TE Part # 1747067-5  
GRACE INERTIA CONN 2.5 HDR ASSY  
5P NATUR



TE Part # 1747067-2  
GRACE INERTIA CONN 2.5 HDR ASSY  
2P NATUR



TE Part # 2-1747067-6  
GRACE INERTIA CONN 2.5 HDR ASSY  
6P BLUE



TE Part # 2069907-1  
GRACE INERTIA CONNECTOR 3/6  
Pos HDR A



TE Part # 1747066-6  
GRACE INERTIA CONN 2.5 PLUG  
HSG 6P NATUR



TE Part # 1827738-1  
GIC 2.5 HDR ASSY SPECIAL 3/5P



TE Part # 2-1747066-6  
GRACE INERTIA CONN 2.5 PLUG  
HSG 6P BLUE



TE Part # 1747508-1  
GRACE INERTIA CONN 2.5 HDR ASSY  
2/3P NAT



TE Part # 1-1747066-6  
GRACE INERTIA CONN 2.5 PLUG  
HSG 6P RED



TE Part # 1747509-1  
GRACE INERTIA CONN 2.5 HDR ASSY  
5/7P NAT

Also in the Series | **GRACE INERTIA 2.5**



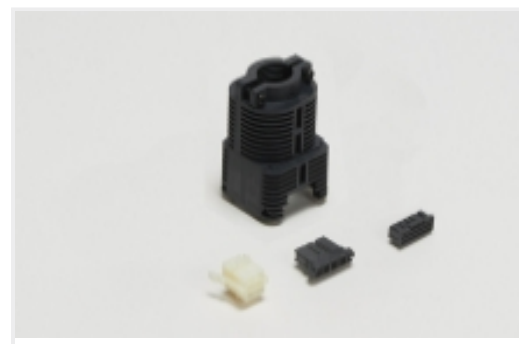
Connector Contacts(6)



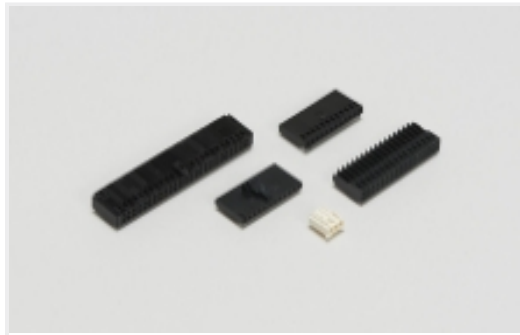
Connector Hardware(7)



PCB Headers & Receptacles(173)

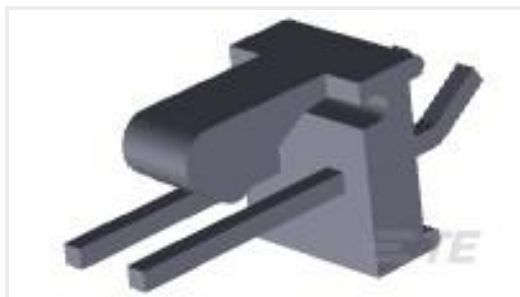


Rectangular Connector Housings(49)



Wire-to-Board Connector Assemblies & Housings(47)

## Customers Also Bought



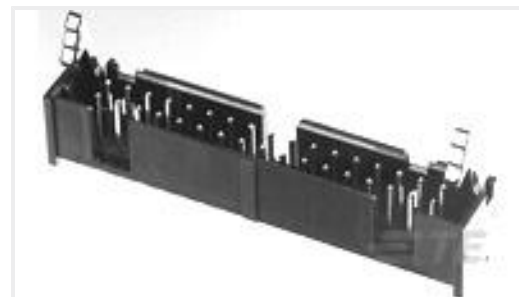
TE Part #644874-2  
02P MTA100 HDR ASSY,SPCL BEND



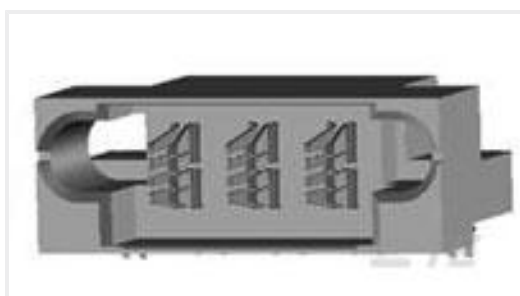
TE Part #647401-4  
04P SL156 HSG W/RAMP,LRG OPEN



TE Part #745967-2  
25 RCPT SP/FMS STD



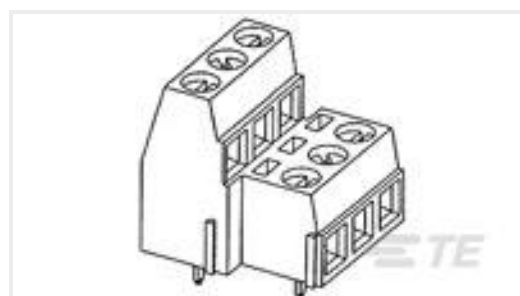
TE Part #104128-4  
020 LOPRO HDR SP 30DP LATCH



TE Part #6450123-3  
MBXL R/A HDR 3ACP+0P



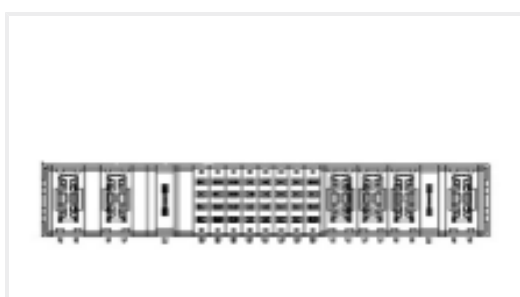
TE Part #66425-7  
III+ PIN,30-26,15AU/FL,STRIP



TE Part #796692-3  
TERMI-BLOK PCB MOUNT 1&2 3P.5



TE Part #YDTS20F15-35PNV001  
RECP ASSY



TE Part #2314581-1  
VERT RECPT, MULTI-BEAM XLE, VITA 62



TE Part #YDTS32W17RV0010000  
DUST COVER ASSEM

## Documents



## Product Drawings

### GRACE INERTIA CONN 2.5 HDR ASSY 6P RED

Japanese

---

## CAD Files

Customer View Model

[ENG\\_CVM\\_CVM\\_1-1747067-6\\_C.2d\\_dxf.zip](#)

English

3D PDF

3D

Customer View Model

[ENG\\_CVM\\_CVM\\_1-1747067-6\\_C.3d\\_igs.zip](#)

English

Customer View Model

[ENG\\_CVM\\_CVM\\_1-1747067-6\\_C.3d\\_stp.zip](#)

English

By downloading the CAD file I accept and agree to the [Terms and Conditions](#) of use.

---

## Product Specifications

[Application Specification](#)

English