



Part Number : [15388178](#)

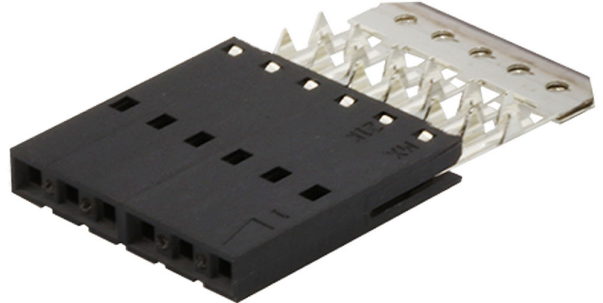
Product Description : SL Single Row, Female, Version A Receptacle, 17 Circuits

Series Number : 70430

Status : Active

Product Category : FFC / FPC Connectors

Engineering Number : 70430-0016



Documents & Resources

Drawings

[015388178_sd.pdf](#)

[PK-70873-0001-001.pdf](#)

3D Models and Design Files

[015388178_stp.zip](#)

Specifications

[PS-70430-001.pdf](#)

Product Environment Compliance

Compliance

| | |
|--------------------|--|
| GADSL/IMDS | Not Relevant |
| China RoHS | |
| EU ELV | Not Relevant |
| Low-Halogen Status | Not Low-Halogen per IEC 61249-2-21 |
| REACH SVHC | Not Contained per D(2024)6225-DC (07 Nov 2024) |
| EU RoHS | Compliant per EU 2015/863 |

[Multiple Part Product Compliance Statements](#)

- Eu RoHS

- REACH SVHC

- Low-Halogen

Multiple Part Industry Compliance Documents

- IPC 1752A Class C
- IPC 1752A Class D
- Molex Product Compliance Declaration
- IEC-62474
- chemSHERPA (xml)

EU RoHS Certificate of Compliance

Part Details

General

| | |
|--------------|--|
| Status | Active |
| Category | FFC / FPC Connectors |
| Series | 70430 |
| Description | SL Single Row, Female, Version A Receptacle, 17 Circuits |
| Product Name | SL |
| UPC | 800753774186 |

Agency

| | |
|-----|---------|
| CSA | LR19880 |
| UL | E29179 |

Electrical

| | |
|-------------------------------|------------|
| Current - Maximum per Contact | 1.0A, 2.0A |
| Voltage - Maximum | 250V |

Physical

| | |
|--------------------------------|-----------------|
| Actuator Type | N/A |
| Circuits (Loaded) | 17 |
| Color - Resin | Black |
| Contact Position | N/A |
| Durability (mating cycles max) | 25 |
| Flammability | 94V-0 |
| Material - Metal | Phosphor Bronze |

| | |
|--------------------------------|-----------------|
| Material - Plating Mating | Tin |
| Material - Plating Termination | Tin |
| Material - Resin | Polyester Alloy |
| Net Weight | 2.412/g |
| Number of Rows | 1 |
| Orientation | Vertical |
| Packaging Type | Tube |
| PC Tail Length | 3.30mm |
| PCB Mounting | N/A |
| PCB Retention | None |
| PCB Thickness - Recommended | 1.60mm, 2.40mm |
| Pitch - Mating Interface | 2.54mm |
| Pitch - Termination Interface | 2.54mm |
| Plating min - Mating | 3.810µm |
| Plating min - Termination | 1.905µm |
| Polarized to PCB | No |
| Stackable | Yes |
| Temperature Range - Operating | -40° to +105°C |
| Wire/Cable Type | FFC/FPC |

Mates With / Use With

Mates with Part(s)

| Description | Part Number |
|---|--------------|
| SL Single Row Housing Panel Mounts | <u>70018</u> |
| SL Single Row Crimp Housings | <u>70107</u> |
| SL Vertical Single Row Headers | <u>70541</u> |
| SL Vertical Single Row Headers | <u>70543</u> |
| SL Vertical Single Row Headers | <u>70545</u> |
| SL Right-Angle Single Row Headers | <u>70551</u> |
| SL Right-Angle, Single Row, Low Profile Headers | <u>70553</u> |
| SL Right-Angle Single Row Headers | <u>70555</u> |

| | |
|--|--------------|
| SL Right-Angle, Single Row, Low Profile, Surface Mount Headers | <u>70634</u> |
| SL Vertical, Single Row, Surface Mount Headers | <u>74099</u> |

Application Tooling

Global

| Description | Part Number |
|---|------------------|
| FFC 2 thru 20 Circuit Termination Kit for use in the Molex TM-3000 or TM-4000 press installed into the TM-42 Replacement Crimp Module | <u>638018550</u> |

This document was generated on Dec 18, 2024