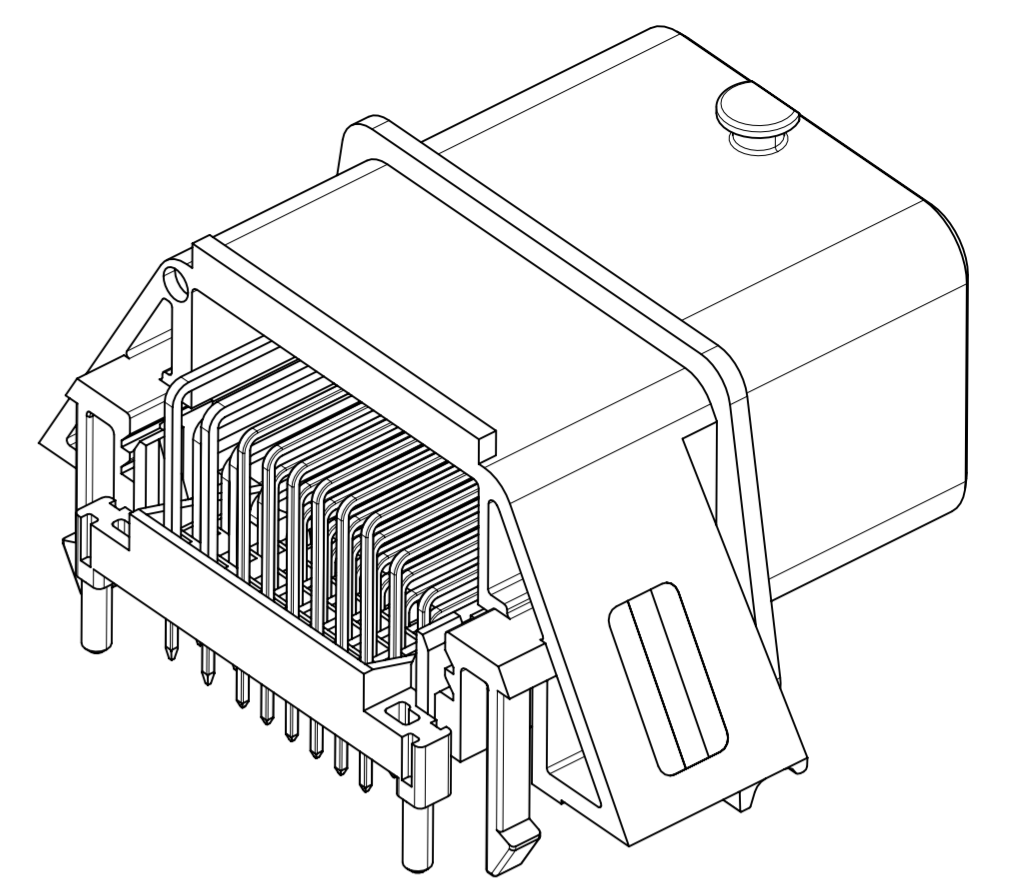
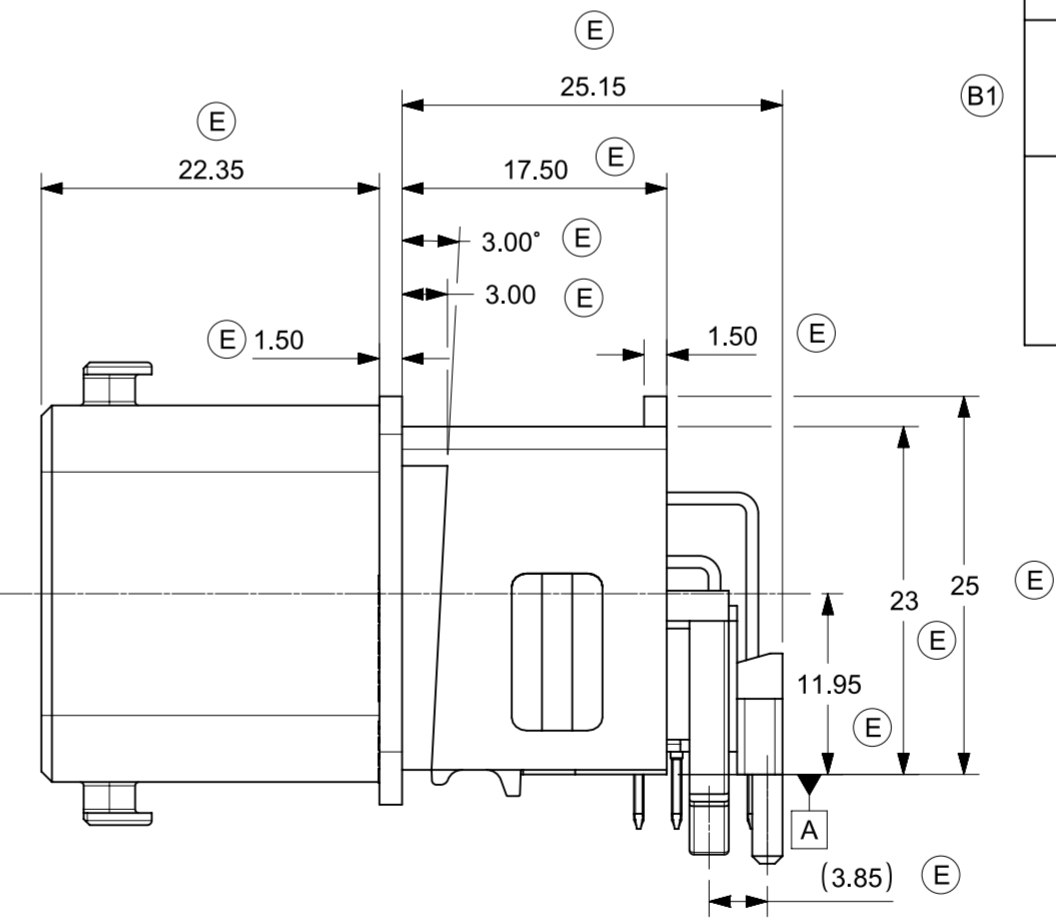
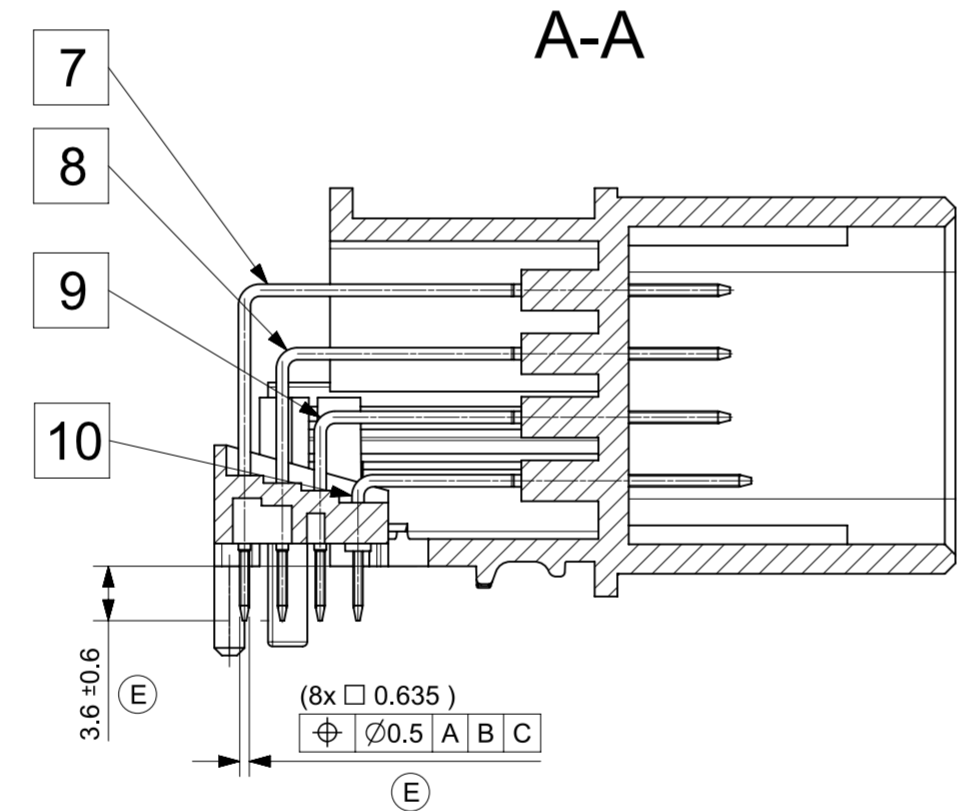
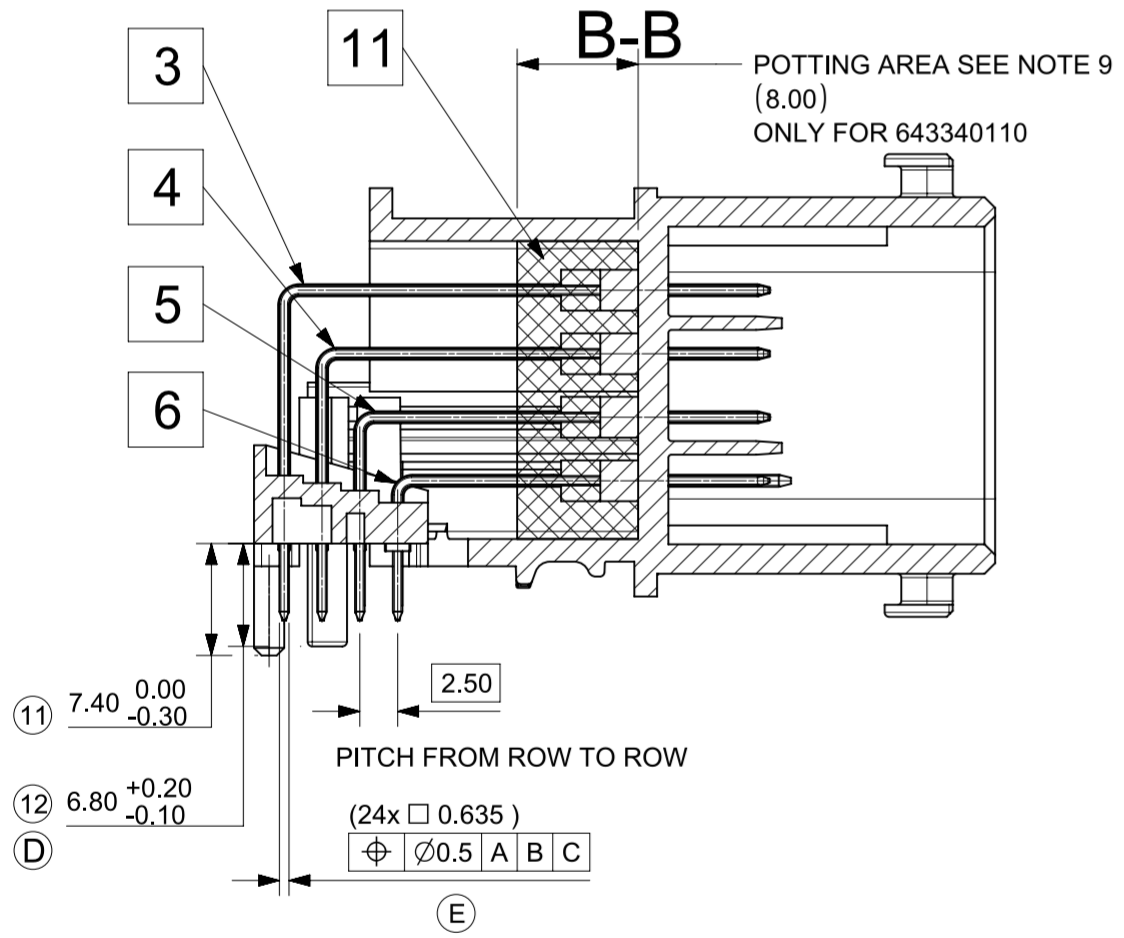


- NOTES
- 1 - GENERAL TOLERANCE ACC. DIN 16901 GROUP 130
 - 2 - SEALING AREA (NO BURR, SCRATCHES, CONTAMINATION, SHRINK DEPENDED WARPAGE AND TOOL SPLITTING LINES ALLOWED)
 - 3 - MATERIAL MARKING
ADDITIONAL MARKING POSSIBLE
e.g.: - CAVITY NO.
- MATERIAL NO.
- VERSION NO.
- TRACEABILITY MARKING (INK-JET OR LASERMARKING (SPECIAL PLASTIC MATERIAL NEEDED))
- etc.
 - 4 - TOOLING SPLITTING LINES FOR AIR VENT (2x)
 - 5 - COLOUR CODING ON INTERFACE (BROWN AND BLUE)
 - 6 - MARKING FOR HARNESS DIRECTION: APPLY THERMAL RIBBON
 - 7 - MATES WITH CMC CONNECTOR 32CKT
MATERIAL NO's:
RIGHT WIRE OUTPUT BROWN CODING 643193219
RIGHT WIRE OUTPUT BLACK CODING 643193211
RIGHT WIRE OUTPUT BLUE CODING 643193216
LEFT WIRE OUTPUT BROWN CODING 643191219
LEFT WIRE OUTPUT BLACK CODING 643191211
LEFT WIRE OUTPUT BLUE CODING 643191216
 - 8 - THE PRODUCT INTERFACE INFORMATION SEE SD-98644-006
 - 9 - POTTING MATERIAL IS SILICONE, SEE BOM FOR GLUE TYPE.



3D-VIEW

TECHNICAL PERFORMANCE CHARACTERISTICS		
LOCKING FEATURES RETENTION FORCE AVERAGE: >260N THE LOWEST RETENTION FORCE VALUE >240N		
PIN RETENTION AND TRACTION FORCES:		
PIN	SIZE [mm]	RETENTION FORCES
PIN 0.635	0.635 x 0.635	≥ 30N
PIN 1.5	1.5 x 0.8	≥ 60N
SOLDERABILITY: TESTING ACC. DIN IEC 60068-2-20 WITHOUT PRE-AGING		
ALL FURTHER TECHNICAL PERFORMANCE CHARACTERISTICS ARE SHOWN IN PRODUCTS AND TEST SPECIFICATION OF THE RELEVANT FEMALE CONNECTORS: PS-64319-001		



BILL OF MATERIAL						
ITEM	DESCRIPTION	RAW MATERIAL	BARRIER (OVERALL)	FINISH (OVERALL)	UNIT	AMOUNT
11	GLUE	SIPC 9030	--	--	PIECE	1 (F1)
10	Pin 1.5 Row 4	CuZn30	Ni 1.3-3.8µm	Sn 2-4µm	PIECE	2
9	Pin 1.5 Row 3				PIECE	2
8	Pin 1.5 Row 2				PIECE	2
7	Pin 1.5 Row 1				PIECE	2
6	Pin 0.64 Row 4				PIECE	6
5	Pin 0.64 Row 3				PIECE	6
4	Pin 0.64 Row 2	Ni 1.3-2.2µm	--	--	PIECE	6
3	Pin 0.64 Row 1				PIECE	6
2	GUIDE PLATE				PBT GF30-V0 BLK	--
1	HOUSING	PBT GF30-V0 BLK	--	--	PIECE	1
ITEM	DESCRIPTION	RAW MATERIAL	BARRIER (OVERALL)	FINISH (OVERALL)	UNIT	AMOUNT
			PLATING [µm]			

DOCUMENT STATUS	Production	RELEASE DATE	24-Apr-2026
-----------------	------------	--------------	-------------

TOOLED PART LIST				
DESCRIPTION	MOLEX PART NUMBER	CODING COLOR	WEIGHT MEASURED	POTTING
(F1) CMC HDR ASSY 32CKT	0643340100	BLACK	28.3g	NO
	0643340110	BLACK	32.6g	YES
	0643340300	BROWN		NO
	0643340500	BLUE		NO

THIS DRAWING CONTAINS INFORMATION THAT IS PROPRIETARY TO MOLEX ELECTRONIC TECHNOLOGIES, LLC AND SHOULD NOT BE USED WITHOUT WRITTEN PERMISSION

DIMENSION UNITS	SCALE	CURRENT REV	DESC: UPDATE POTTING
MM	2:1	VOLUME	

EC NO: CO-000039118
 DRWN: Yu Dong Zhang 15-Apr-2026
 CHK'D: Fan Bai 24-Apr-2026
 APPR: Ringo Hu 24-Apr-2026

INITIAL REVISION:
 DRWN: RFC_PLMIMP
 APPR: Elvis Song 27-Mar-2026

molex

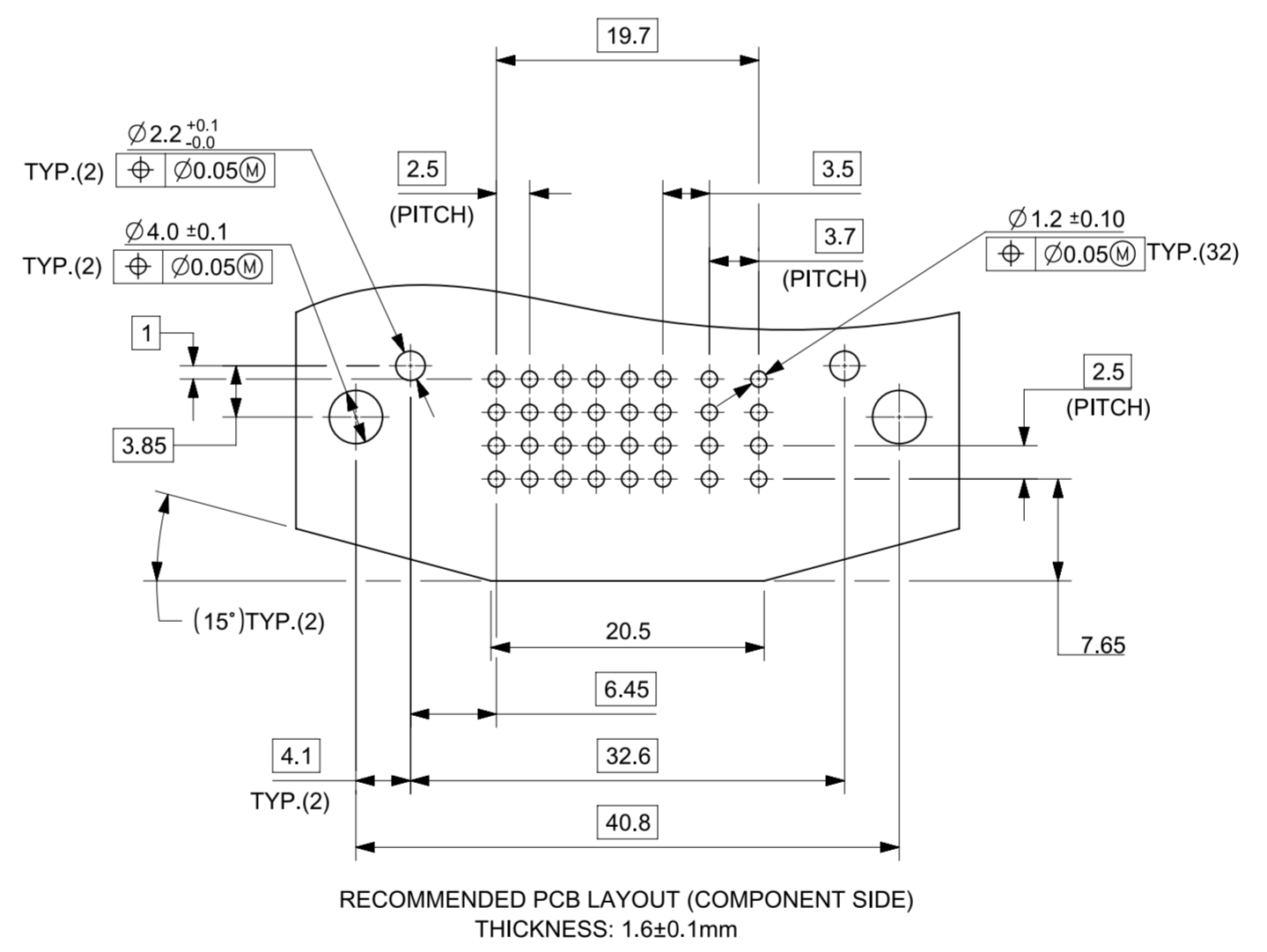
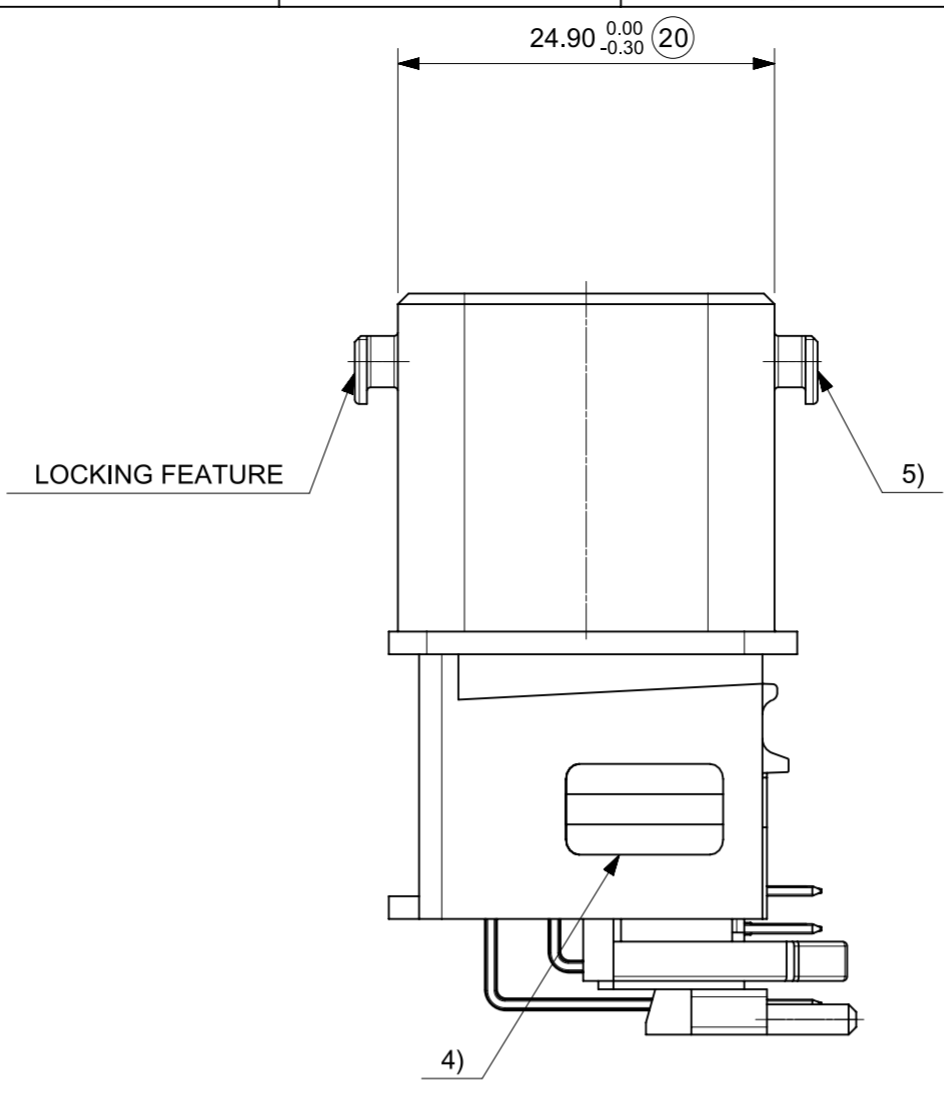
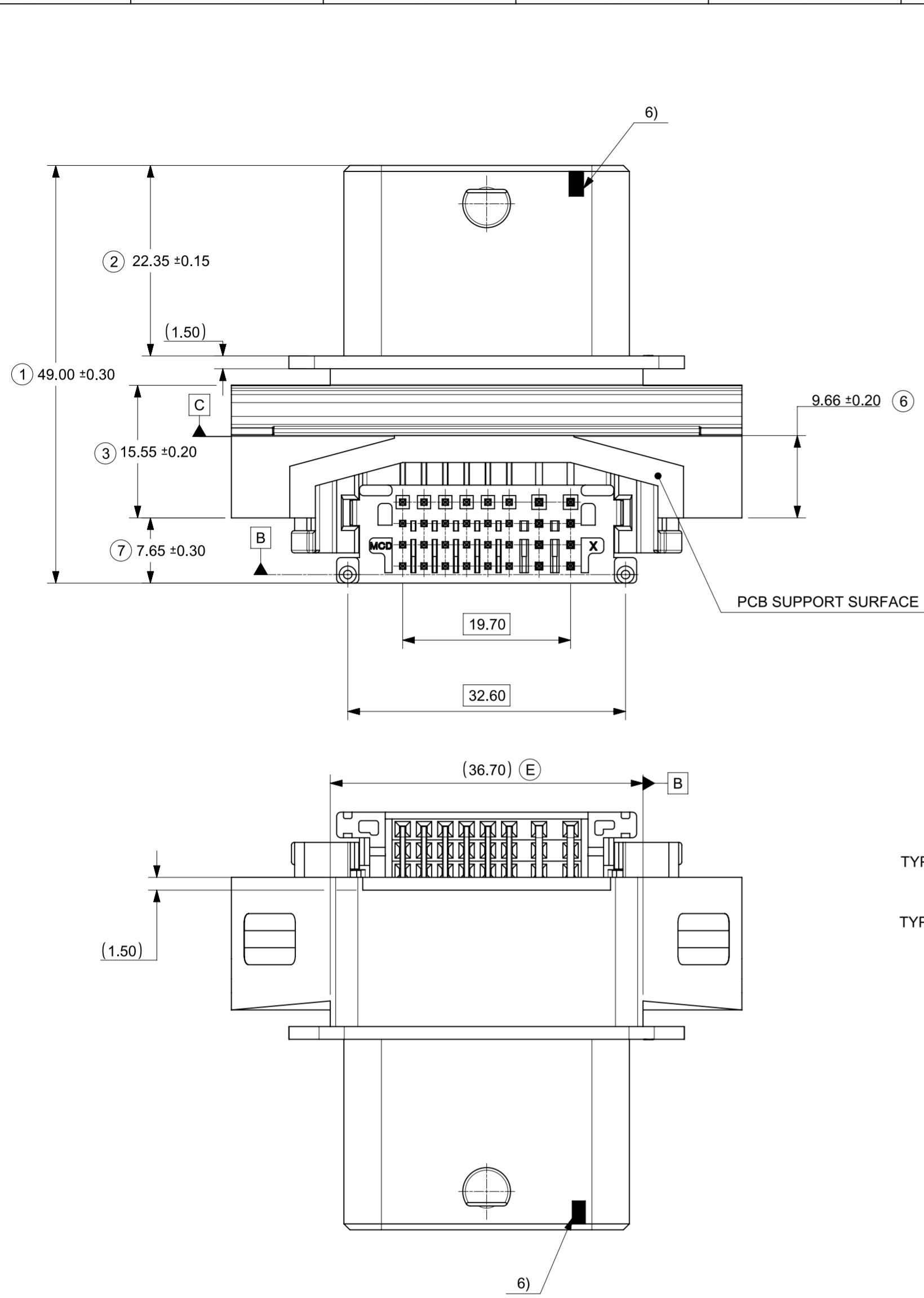
CMC HEADER 32CKT POTTING ASSEMBLED SOLDER VERSION

PRODUCT CUSTOMER DRAWING

DOCUMENT NUMBER	DOC TYPE	DOC PART	REVISION
SD-64334-100	PSD	005	F1

MATERIAL NUMBER	CUSTOMER	SHEET NUMBER
SEE TABLE	GENERAL MARKET	1 OF 2

(D) INSPECTION BALLOON NUMBER LOG
 PER DRAWING REVISION: C
 LAST BALLOON NUMBER USED: 26
 ADDED BALLOON NUMBER USED:
 REMOVED BALLOON NUMBER: 4, 5, 10



F1	39118	1.UPDATE POTTING THICKNESS. 2.UPDATE POTTING VOLUME.
F		1.ADD NEW POTTING PART NUMBER. 2.ADD POTTING THICKNESS. 3.ADD POTTING WEIGHT. 4.ADD GLUE TYPE.
E		1. REVISE PLASTIC & COPPER INFORMATION DESCRIPTION. 2. ADD PLATING THICKNESS. 3. ADD DIM TOLERANCE FOR CASING INTERFACING. 4. ADD PCB SIDE PIN POSITION. 5. REFER TO REVISION LETTER © FOR DETAIL CHANGE.
D	629431	1. UPDATED VIEWS FROM PAP PRE-LOCK TO FINAL-LOCK 2. UPDATED DIM 12 FROM 4.65 TO 6.80 DUE TO GUIDE PLATE RELOCATION 3. CHANGED LETTERS FROM LOWER CASE TO CAPITAL 4. REMOVED BALLOON NUMBER FOR BASIC DIMENSIONS 5. ADDED INSPECTION BALLOON NUMBER LOG 6. UPDATED NOTES 6 FROM WHITE INK TO THERMAL RIBBON
C	619506	1) REMOVE PAGES OF INTERFACE DRAWING SD-98644-006 2) REMOVE QA COUNT FROM TITLE BLOCK 3) REMOVE GERMAN TEXT ON PAGES SHEET 1 4) UPDATE "NOTES" SEE REVISION SYMBOL C FOR DETAIL 5) ADD BLUE CODING "TOOLED PART LIST" TABLE SHEET2 6) ADD REVISION LOG
B1	GCA2011-0026	UPDATE TEST SPEC OF SOLDERABILITY
B	GCA2011-0001	UPDATE NEW REVISION INTERFACE DRAWING
A1	GCA2009-0059	1) ADD DIM 6, 7, 8 2) CORRECT HEADER WEIGHT 3) ADD PCB LAYOUT AND NOTES
A	610245	VOIDED BY ECTR MIGRATION TEAM DUE TO SHEET NUMBER CHANGED
REVISION	EC#	DESCRIPTIONS

MODIFICATION LOG

NOTES:

- THE VIEW "RECOMMENDED PCB LAYOUT" SHOWS THE SECTION OF THE HOLE POSITION CONCERNING THE HEADER-PIN, GUIDING AND LOCKING LAYOUT.
- THIS VIEW OF THE HOLE PATTERN DOESN'T POINT TO THE ABSOLUTE POSITION ON THE PCB.
- THE HOLE PATTERN IS COPY OF THE HEADER LAYOUT.
- PLEASE COMBINE THE TWO ELEMENTS (HEADER AND VIEW OF THE HOLE PATTERN) TO CREATE PCB LAYOUT.

THIS DRAWING CONTAINS INFORMATION THAT IS PROPRIETARY TO MOLEX ELECTRONIC TECHNOLOGIES, LLC AND SHOULD NOT BE USED WITHOUT WRITTEN PERMISSION

DIMENSION UNITS MM	SCALE 2:1	CURRENT REV DESC: UPDATE POTTING VOLUME								
EC NO: CO-000039118 DRWN: Yu Dong Zhang 15-Apr-2026 CHK'D: Fan Bai 24-Apr-2026 APPR: Ringo Hu 24-Apr-2026							CMC HEADER 32CKT POTTING ASSEMBLED SOLDER VERSION			
INITIAL REVISION: DRWN: RFC_PLMIMP APPR: Elvis Song 27-Mar-2026			PRODUCT CUSTOMER DRAWING							
DRAFT WHERE APPLICABLE MUST REMAIN WITHIN DIMENSIONS		THIRD ANGLE PROJECTION	DRAWING A2-SIZE	SERIES 64334	MATERIAL NUMBER SEE TABLE	CUSTOMER GENERAL MARKET	DOCUMENT NUMBER SD-64334-100	DOC TYPE PSD	DOC PART 005	REVISION F1
			SHEET NUMBER 2 OF 2							