

PRODUCT NUMBER
71959-YXXLF

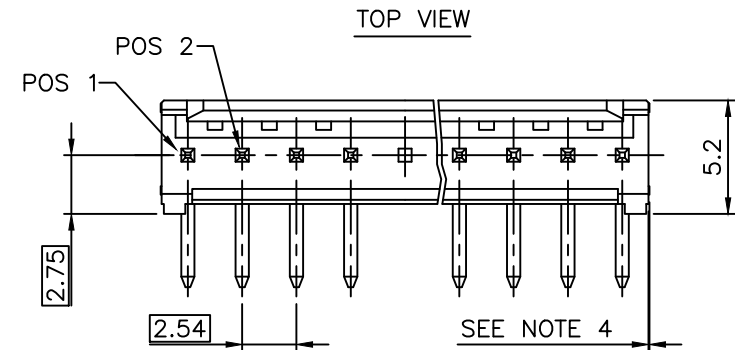
SUFFIX LETTER "LF" INDICATES
THE PRODUCT IS RoHS COMPATIBLE,
SEE NOTE 7

PLATING

3 = 0.76µm GOLD/GXT ON CONTACT AREA
2µm TIN MIN ON TAIL

4 = 2µm TIN MIN ON CONTACT AREA
AND ON TAIL

STYLE	SIZE	OMIT PIN POSITION FROM TOP VIEW
01	1x03	1
02	1x03	2
03	1x03	3
04	1x07	3;4;5
05	1x04	2;3
06	1x04	1;2;
07	1x07	2;4;6



NOTES:

1. BODY MATERIAL: POLYESTER 30% GLASSFILLED COLOR BLUE, FLAME RETARDANT PER UL-94 VO
2. CONTACT MATERIAL: PHOSPHOR BRONZE
3. 15N MIN PIN RETENTION IN EITHER DIRECTION
4. 0.6 MAX PROTRUSION PERMITTED AT 4 PLACES

5. PACKAGING:

- POLYBAGS FROM 02 TO 06 POSITIONS
- TUBE FROM 07 TO 36 POSITIONS

6. TO DETERMINE DIMENSIONS:

N = NUMBER OF POSITIONS PER ROW
EXAMPLE: 8 POS $N \times 2.54 = 20.32\text{mm}$

7. RoHS COMPATIBLE PRODUCT SPECIFICATIONS

a - PLATING:

- "LF" MEANS THE PRODUCT IS LEAD-FREE, 2µm MINIMUM MATTE TIN OVER 1.27µm MINIMUM NICKEL UNDERPLATE.

b - MANUFACTURING PROCESS COMPATIBILITY

- THE HOUSING WILL WITHSTAND EXPOSURE TO 245°C ±5°C SOLDER BATH TEMPERATURE FOR 5 SECONDS IN A WAVE SOLDER APPLICATION WITH A 1.6mm MIN THICK CIRCUIT BOARD.

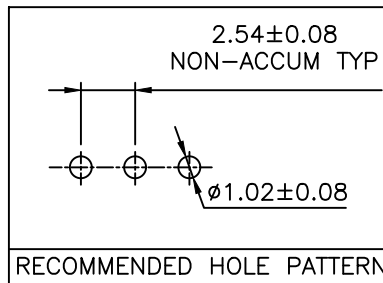
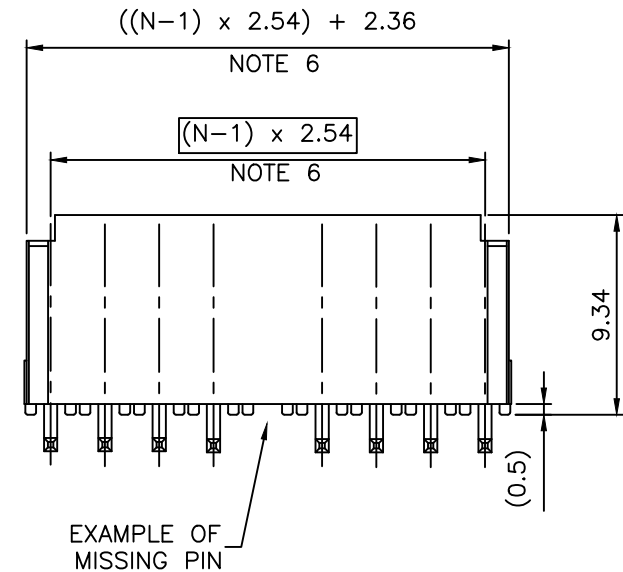
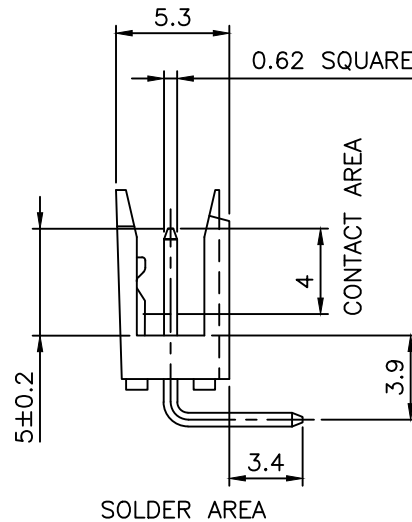
c - LABELING:

- MEETS PACKAGING SPECS AS PER GS-14-920

d - LEGAL STATEMENT: SEE GS-22-008

8. THIS PART SERIES IS NOT INITIALLY INTENDED FOR AUTOMOTIVE APPLICATIONS. ADDITIONAL FEES ARE CHARGEABLE FOR ANY ADDITIONAL QUALIFICATION AND TEST REPORTS PERFORMED OUTSIDE THE SCOPE OF THE STANDARD PRODUCT SPECIFICATIONS.

9. UNLESS OTHERWISE APPROVED BY AMPHENOL, ALL PARTS AND COMPONENTS ARE DESIGNED & BUILT ACCORDING TO AMPHENOL'S SPECIFICATIONS WHICH ARE SUBJECT TO CHANGE WITHOUT NOTICE.



mat'l. code SEE P/N		surface ISO 1302 ✓		tolerance ISO 406 ISO 1101		projection mm		product family DUBOX HEADER	
ltr ecn no dr date		tolerances unless otherwise specified		.X ±0.3		mm		title	
H	F08-0147	YOV	08.04.14	.XX ±0.15		scale 5:1		DUBOX SR RA SELECTIVELY LOADED	
J	B-14263	LMU	13.03.14	.XXX ±0.05				dwg no sheet 1 of 1 size	
K	F-21810	AMA	15.06.19					71959 A3	
L	F-24817	AMA	16.08.26	dr J.COMPAGNON 95.04.11				type CUSTOMER Drawing	
M	F-59125	DDE	26.01.21	engr JM.PHAMVAN 95.04.11					
				chr J.COMPAGNON 95.04.11					
G	F06-0228	LMU	06.07.11	appd JM.PHAMVAN 95.04.11					
sheet index		revision sheet							