

1456985-4 ✓ ACTIVE



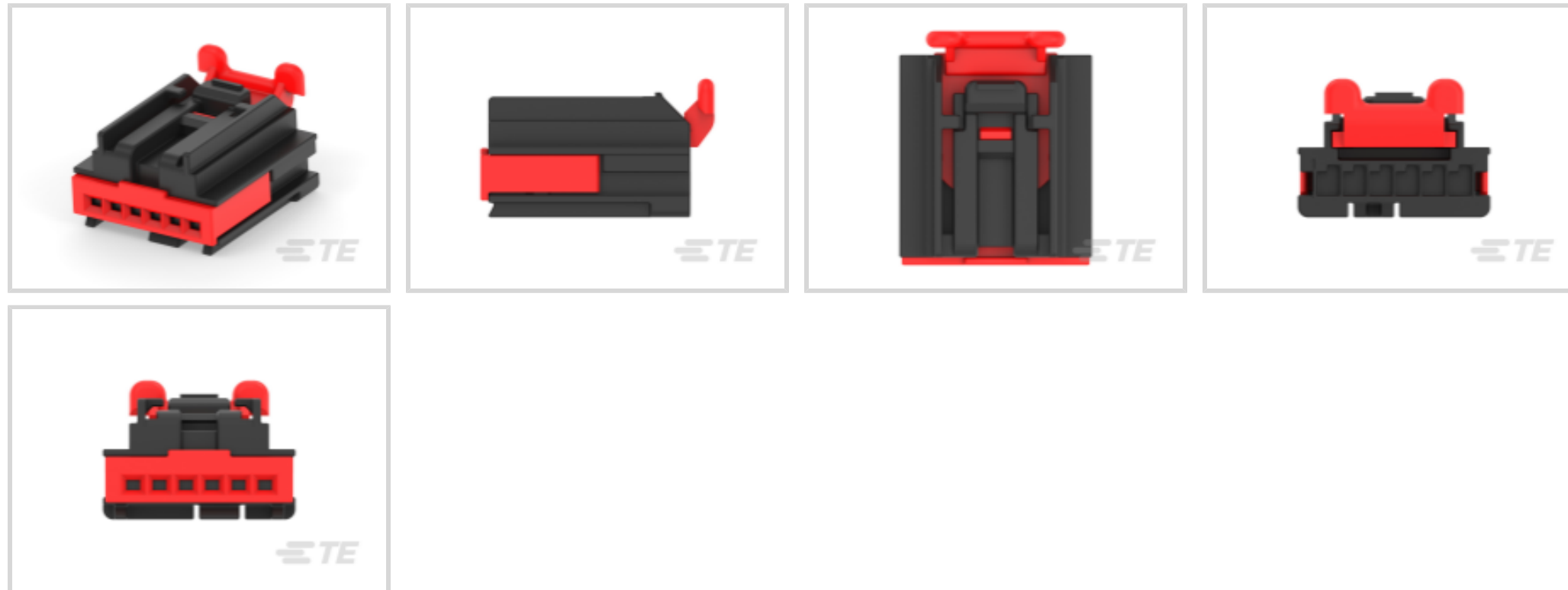
### Get .64 Connector System

TE Internal #: 1456985-4

Housing for Female Terminals, Wire-to-Component, 6 Position, 2.54 mm [.1 in] Centerline, Sealable, Black, Signal, Get .64 Connector System

[View on TE.com >](#)

Connectors > Automotive Connectors > Automotive Housings



Connector System: **Wire-to-Component**

Number of Positions: **6**

Connector & Housing Type: **Housing for Female Terminals**

Centerline (Pitch): **2.54 mm [.1 in]**

Sealable: **Yes**

## Features

### Product Type Features

Connector System	Wire-to-Component
Connector & Housing Type	Housing for Female Terminals
Sealable	Yes
Primary Locking Feature	Integrated in Housing
Mixed & Hybrid Connector	No
Connector Shape	Rectangular

### Configuration Features

Number of Positions	6
Number of Rows	1
Blank Cavity Position	0

### Housing Features

Centerline (Pitch)	2.54 mm[.1 in]
Housing Material	PA GF

### Contact Features



Mating Tab Width	1 mm[.039 in]
Contact Size	.64mm
Contact Type	Receptacle

### Body Features

Primary Product Color	Black
Connector & Keying Code	C
Cable Exit Angle	180°

### Operation/Application

Circuit Application	Signal
---------------------	--------

### Mechanical Attachment

Connector Mounting Type	Cable Mount (Free-Hanging)
Strain Relief	Without
Terminal Position Assurance	Yes
Mating Alignment Type	Keyed
Mating Alignment	With

### Usage Conditions

Operating Temperature (Max)	100 °C[212 °F]
Operating Temperature Range	-40 – 100 °C[-40 – 212 °F]

### Other

Connector Position Assurance Capable	Yes
EU RoHS Compliance	Compliant
EU ELV Compliance	Compliant
Serviceable	Yes

### Dimensions

Product Width	18.55 mm[.73 in]
Product Length	23.4 mm[.921 in]
Connector Height	13.35 mm[.526 in]

### Industry Standards

IP Rating	IP67
Compatible With Agency/Standards Products	USCAR-2
UL Flammability Rating	UL 94HB



### Packaging Features

Packaging Quantity	900
Packaging Method	Bulk

### Product Compliance

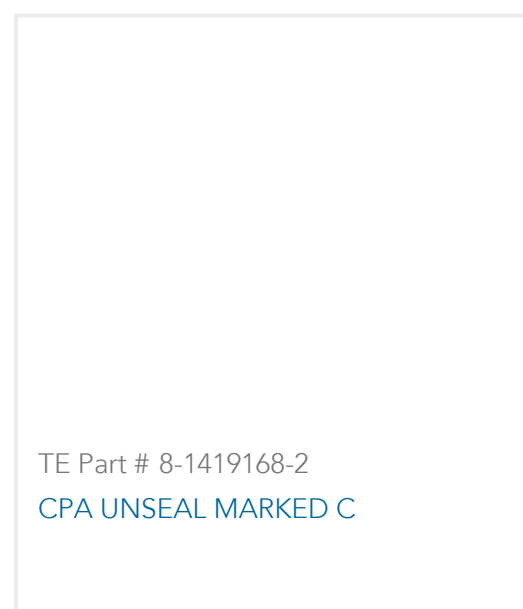
[For compliance documentation, visit the product page on TE.com>](#)

EU RoHS Directive 2011/65/EU	Compliant
EU ELV Directive 2000/53/EC	Compliant
China RoHS 2 Directive MIIT Order No 32, 2016	No Restricted Materials Above Threshold
EU REACH Regulation (EC) No. 1907/2006	Current ECHA Candidate List: JUNE 2024 (241) Candidate List Declared Against: JUNE 2024 (241) Does not contain REACH SVHC
Halogen Content	Low Halogen - Br, Cl, F, I < 900 ppm per homogenous material. Also BFR/CFR/PVC Free
Solder Process Capability	Not applicable for solder process capability

#### Product Compliance Disclaimer

This information is provided based on reasonable inquiry of our suppliers and represents our current actual knowledge based on the information they provided. This information is subject to change. The part numbers that TE has identified as EU RoHS compliant have a maximum concentration of 0.1% by weight in homogenous materials for lead, hexavalent chromium, mercury, PBB, PBDE, DBP, BBP, DEHP, DIBP, and 0.01% for cadmium, or qualify for an exemption to these limits as defined in the Annexes of Directive 2011/65/EU (RoHS2). Finished electrical and electronic equipment products will be CE marked as required by Directive 2011/65/EU. Components may not be CE marked. Additionally, the part numbers that TE has identified as EU ELV compliant have a maximum concentration of 0.1% by weight in homogenous materials for lead, hexavalent chromium, and mercury, and 0.01% for cadmium, or qualify for an exemption to these limits as defined in the Annexes of Directive 2000/53/EC (ELV). Regarding the REACH Regulation, the information TE provides on SVHC in articles for this part number is based on the latest European Chemicals Agency (ECHA) 'Guidance on requirements for substances in articles' posted at this URL: <https://echa.europa.eu/guidance-documents/guidance-on-reach>

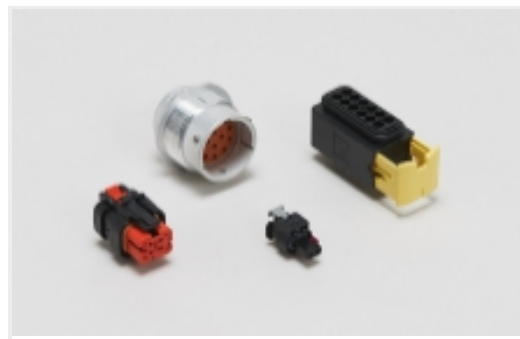
### Compatible Parts



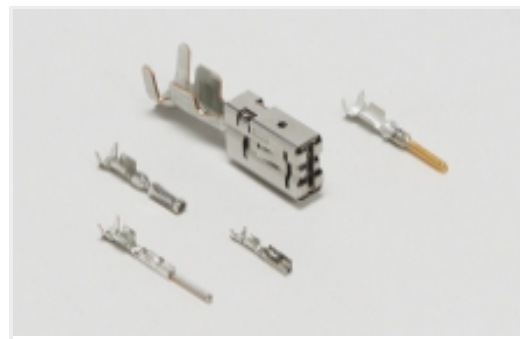
Also in the Series | [Get .64 Connector System](#)



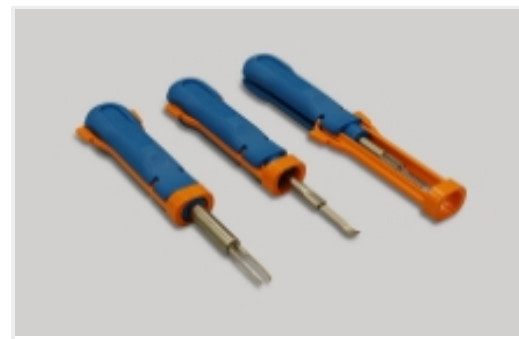
Automotive Connector Caps & Covers (5)



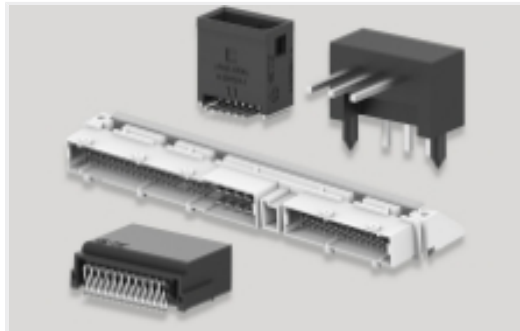
Automotive Housings(102)



Automotive Terminals(28)



Insertion & Extraction Tools(1)



PCB Headers & Receptacles(3)

## Customers Also Bought



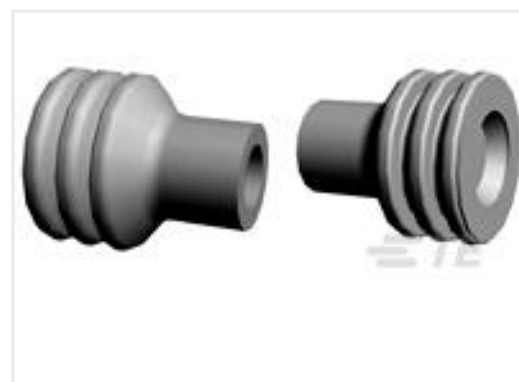
TE Part #175088-1  
.187 SEALD TAB CONT L



TE Part #2272163-1  
MCON WIRE DRESS, 4P, RIGHT ANGLE



TE Part #2035363-6  
1X6 GENERATION Y ASSY KEYD CPA



TE Part #85011-1  
RUBBER PLUG FOR SEALED CONN.



TE Part #1-2109472-2  
MCP 1.5/2.8 SLD 30P PLUG COVER



TE Part #1-2301462-8  
30POS, HYBRID, REC HSG ASSY, SLD, COD A



TE Part #2188250-2  
JPT 4P SLD PLUG ASS'Y



TE Part #2317373-1  
2P MCON 9.5 CAP HOUSING, KEY A



TE Part #1897711-2  
MQS 4P PLUG ASSY



TE Part #2310000-1  
10POS, MQS, REC HSG ASSY, UNSLD, COD A

## Documents



### Product Drawings

[1X6 Fem unsealed LP assy Key C w/CPA](#)

English

---

### CAD Files

Customer View Model

[ENG\\_CVM\\_CVM\\_1456985-4\\_D.2d\\_dxf.zip](#)

English

3D PDF

3D

Customer View Model

[ENG\\_CVM\\_CVM\\_1456985-4\\_D.3d\\_igs.zip](#)

English

Customer View Model

[ENG\\_CVM\\_CVM\\_1456985-4\\_D.3d\\_stp.zip](#)

English

By downloading the CAD file I accept and agree to the [Terms and Conditions](#) of use.

---

### Instruction Sheets

[Instruction Sheet \(U.S.\)](#)

English