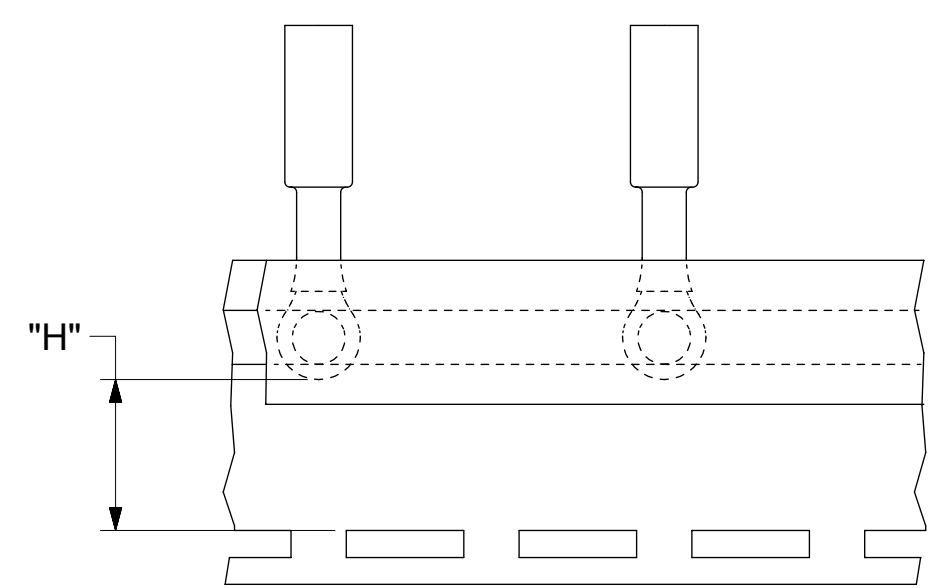
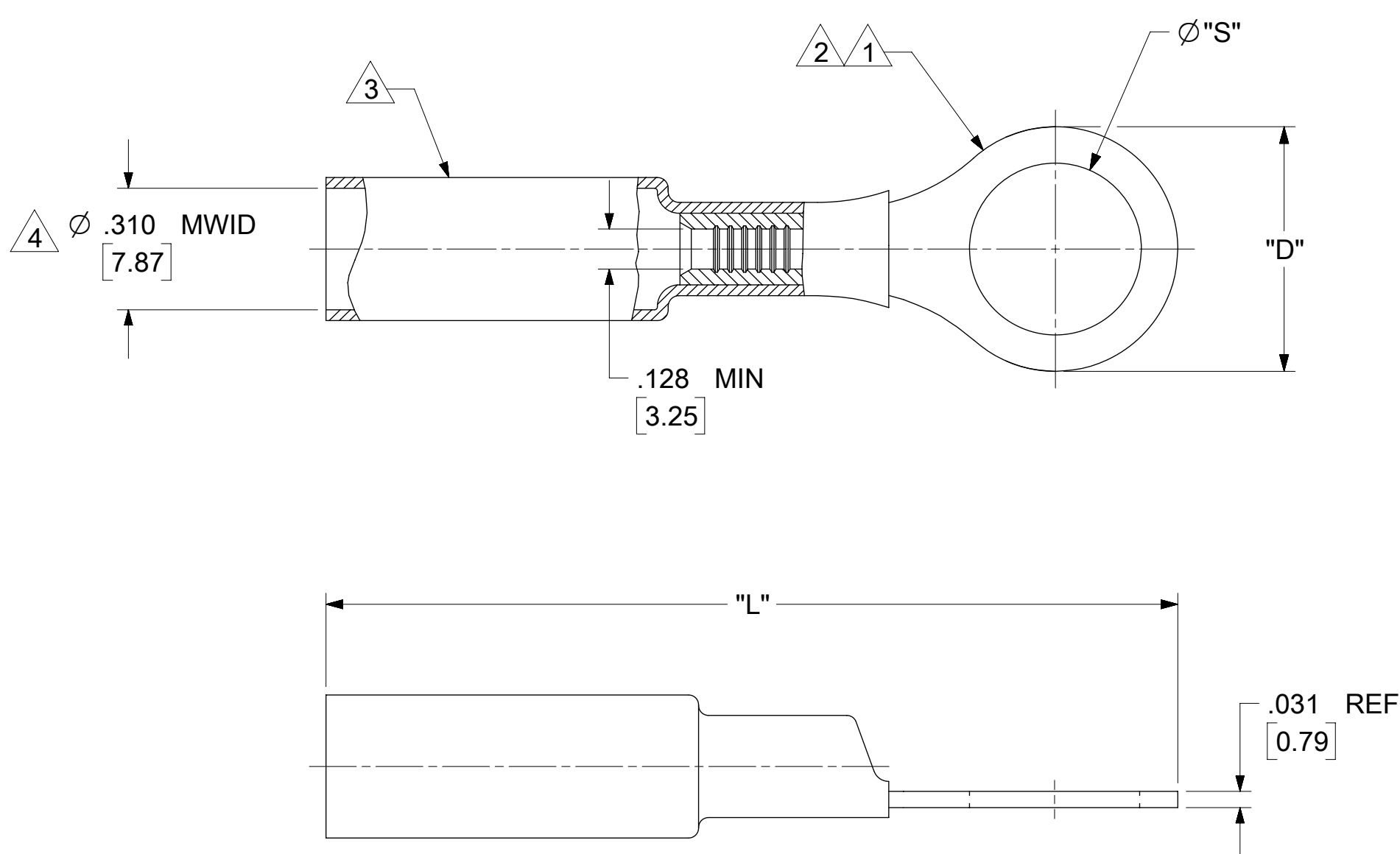


MAT'L NO (LOOSE PC)	ENG NO (LOOSE PC)	MAT'L NO (ON TAPE)	ENG NO (ON TAPE)	STUD SIZE	"S" ±.005 (0.03)	"D" MAX	"H" REF	"L" REF
191640060	SC-228-04	-	-	#4	.126 (3.20)	.39 (9.9)	.469 (11.91)	1.35 (34.3)
191640061	SC-228-06	191640937	SC-228-06T	#6	.146 (3.71)			
191640062	SC-228-08	191640938	SC-228-08T	#8	.173 (4.39)			
191640063	SC-228-10	191640939	SC-228-10T	#10	.198 (5.03)			
191640065	SC-230-10	191640316	SC-230-10T	#10	.198 (5.03)	.54 (13.7)	.302 (7.67)	1.49 (37.8)
191640066	SC-230-14	191640317	SC-230-14T	1/4	.265 (6.73)			
191640067	SC-230-56	191640318	SC-230-56T	5/16	.328 (8.33)			
191640068	SC-240-38	191640857	SC-240-38T	3/8	.390 (9.91)	.60 (15.2)	.385 (9.78)	1.59 (40.4)
191640058	SC-201-12	-	-	1/2	.515 (13.08)	.76 (19.3)	-	1.75 (44.5)
191640846	SC-201-38	-	-	3/8	.390 (9.91)		-	



PARTS ON TAPE (D)

- NOTES:
- 1 TERMINAL MATERIAL: COPPER ALLOY.
 - 2 FINISH: ELECTRO TIN PLATE.
 - 3 INSULATION MATERIAL: HEAT SHRINKABLE TUBING WITH HOTMELT ADHESIVE LINER. COLOR: YELLOW
 - 4 MWID = MAXIMUM WIRE INSULATION DIAMETER
 - 6. MUST BE RoHS COMPLIANT

FUNCTIONAL SYMBOLS	THIS DRAWING CONTAINS INFORMATION THAT IS PROPRIETARY TO MOLEX ELECTRONIC TECHNOLOGIES, LLC AND SHOULD NOT BE USED WITHOUT WRITTEN PERMISSION			
	DIMENSION UNITS	SCALE	CURRENT REV DESC: PN 19160936 IS OBSOLETE, PARTS ON TAPE ARE DOUBLE SPACED, REMOVED FLAG 5	
$\frac{F}{A} = 0$	INCH/MM	NTS		
$\frac{F}{C} = 0$	GENERAL TOLERANCES (UNLESS SPECIFIED)			
$\frac{F}{P} = 0$		MM	INCH	
DIVISIONAL SYMBOLS	4 PLACES	±	±	
	3 PLACES	±	±	
	2 PLACES	±	±	
	1 PLACE	±	±	
	0 PLACES	±	±	
	ANGULAR TOL	±	°	
DRAFT WHERE APPLICABLE MUST REMAIN WITHIN DIMENSIONS		THIRD ANGLE PROJECTION		DRAWING SERIES
				C-SIZE 19164
DOCUMENT STATUS		P1	RELEASE DATE	2024/12/12 21:49:56
EC NO: 807220		DRWN: DEANNM1	2024/10/22	
CHK'D: ETHRODAHL		2024/12/12		
APPR: ETHRODAHL		2024/12/12		
INITIAL REVISION:				
DRWN: BENDERLE		2002/12/12		
APPR: RDEROSS		2002/12/13		
DOCUMENT NUMBER		DOC TYPE	DOC PART	REVISION
SD-19164-041		PSD	001	E
MATERIAL NUMBER		CUSTOMER		SHEET NUMBER
		GENERAL MARKET		1 OF 1