

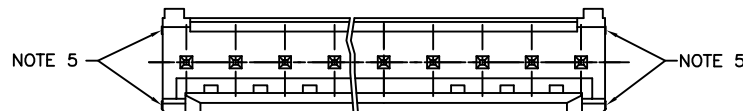
PRODUCT NUMBER
73324-YXXLF

PLATING, SEE TABLE

LEAD FREE OPTION
SEE NOTE 6

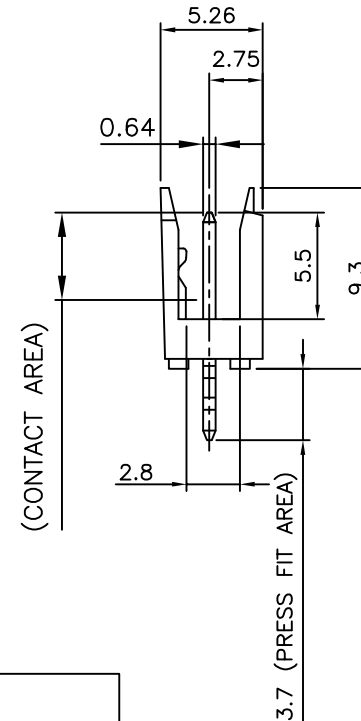
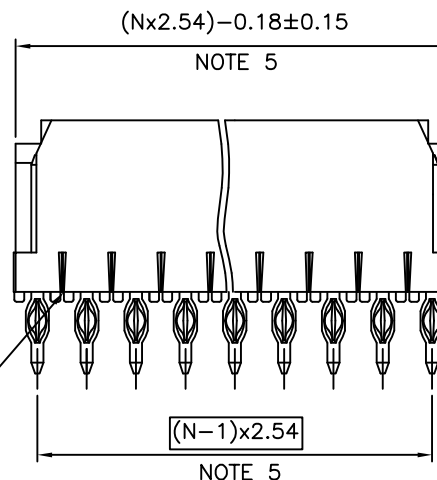
TOTAL NB OF POS

TOP VIEW



NOTES:

- 1 - MATERIAL HOUSING: THERMOPLASTIC POLYESTER 30% GLASS FILLED COLOUR BLUE, FLAME RETARDANT PER UL-94 CATEGORY VO.
- 2 - MATERIAL PIN: COPPER ALLOY.
- 3 - MIN PUSH OUT FORCE TERMINAL : 15N
- 4 - MAX PROTUSION 0.3 MAX IN 4 PLACES. IN BOTH DIRECTIONS.
- 5 - TO DETERMINE DIMENSIONS :
N = NUMBER OF POSITIONS PER ROW
EXAMPLE : 8 POS PER ROW, N x 2.54 = 20.32mm
- 6 - "LF" MEANS THAT THE PRODUCT IS RoHS COMPLIANT THEN MEETS EUROPEAN UNION DIRECTIVES AND OTHER COUNTRY REGULATION AS DESCRIBED IN GS-47-0004

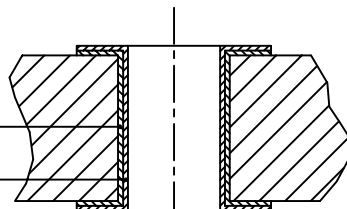


THERE IS NO NECESSARY A GROOVE IN EVERY POSITION ON THIS SIDE.

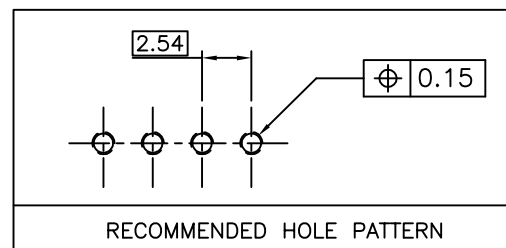
DRILLED HOLE $\phi 1.15 \pm 0.025$ DIA.

COPPER PLATING 0.025 MIN. 0.075 MAX.

TIN/LEAD PLATING 0.005 MIN. 0.015 MAX.



FINISHED HOLE $\phi 0.94$ MIN. $\phi 1.09$ MAX.



RECOMMENDED HOLE PATTERN

73324-3XXLF	0.76 μ m Au/GXT	1.0 μ m MATTE TIN
PLATING CODE	CONTACT AREA	PRESSFIT TAIL AREA
	PLATING THICKNESS OVER 1.27 μ m Ni MIN	

mat'l. code SEE NOTES		surface ISO 1302	tolerance ISO 406 ISO 1101	projection 	product family DUBOX HDR
ltr	ecn no	dr	date	tolerances unless otherwise specified	title PRESS FIT SINGLE ROW
H	B-19286	AMA	14.11.03	angles	mm
J	F-21810	AMA	15.06.19	linear	scale 1/3
D	F20102	DLE	02.01.09	dr	P NIZZI 97.06.19
E	F06-0228	LMU	06.07.11	engr	JM PHAMVAN 97.06.19
F	F06-0298	LMU	06.10.18	chr	P NIZZI 97.06.19
G	F08-0147	YOY	08.04.14	appd	JMP 97.06.19
sheet index	revision sheet				

dwg no 73324 sheet 1 of 1 size A3
type CUSTOMER Drawing