



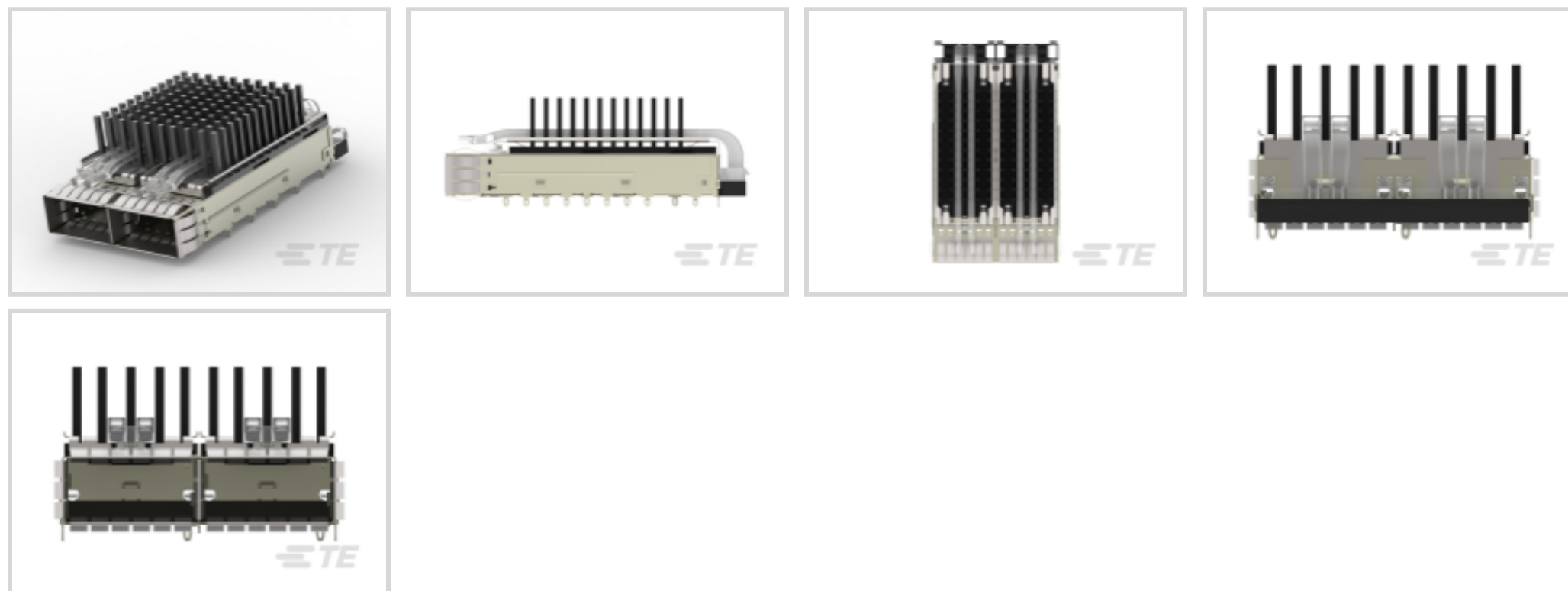
**zQSFP+/QSFP28**

TE Internal #: 2-2170808-3

QSFP28/56, Cage Assembly, Signal, Operating Temperature Range -40 – 85 °C [-40 – 185 °F], Data Rate (Max) 28 Gb/s, 2 Ports

[View on TE.com >](#)

Connectors > Pluggable IO Connectors & Cages



Pluggable I/O Product Type: **Cage Assembly**

Sealable: **No**

Circuit Application: **Signal**

Operating Temperature Range: **-40 – 85 °C [-40 – 185 °F]**

Data Rate (Max): **28 Gb/s**

**Features**

**Product Type Features**

Pluggable I/O Product Type	Cage Assembly
Sealable	No
Form Factor	QSFP28/56
Cage Type	Ganged
Thermal Accessory Type Included	Heat Sink

**Operation/Application**

Circuit Application	Signal
Pluggable I/O Applications	SFP+ Stacked Belly-to-Belly

**Usage Conditions**

Operating Temperature Range	-40 – 85 °C[-40 – 185 °F]
-----------------------------	---------------------------

**Electrical Characteristics**

Data Rate (Max)	28 Gb/s
-----------------	---------

**Configuration Features**

Number of Ports	2
-----------------	---



Port Matrix Configuration	1 x 2
---------------------------	-------

Number of Rear EONs per Port Column	1
-------------------------------------	---

### Other

Included Lightpipe	Yes
--------------------	-----

EMI Containment Feature Type	Internal/External EMI Springs
------------------------------	-------------------------------

EU RoHS Compliance	Compliant
--------------------	-----------

EU ELV Compliance	Compliant
-------------------	-----------

### Body Features

Heat Sink Style	Pin
-----------------	-----

Heat Sink Finish	Anodized Black
------------------	----------------

Heat Sink Height	13.5 mm[.531 in]
------------------	------------------

Heat Sink Height Class	Networking
------------------------	------------

### Contact Features

PCB Contact Termination Area Plating Material	Tin
---	-----

### Termination Features

Termination Method to PCB	Through Hole - Press-Fit
---------------------------	--------------------------

Termination Post & Tail Length	2.05 mm[.081 in]
--------------------------------	------------------

### Housing Features

Cage Material	Nickel Silver
---------------	---------------

### Dimensions

PCB Thickness (Recommended)	1.57 mm[.062 in]
-----------------------------	------------------

### Industry Standards

UL Flammability Rating	UL 94V-0
------------------------	----------

### Packaging Features

Packaging Method	Box & Tray
------------------	------------

### Product Compliance

[For compliance documentation, visit the product page on TE.com>](#)

EU RoHS Directive 2011/65/EU	Compliant
------------------------------	-----------

EU ELV Directive 2000/53/EC	Compliant
-----------------------------	-----------

China RoHS 2 Directive MIIT Order No 32, 2016	No Restricted Materials Above Threshold
---	---

EU REACH Regulation (EC) No. 1907/2006	
--	--



Current ECHA Candidate List: JUNE 2024 (241)  
 Candidate List Declared Against: JUNE 2024 (241)  
 Does not contain REACH SVHC

Halogen Content Not Low Halogen - contains Br or Cl > 900 ppm.

Solder Process Capability Not applicable for solder process capability

Product Compliance Disclaimer

This information is provided based on reasonable inquiry of our suppliers and represents our current actual knowledge based on the information they provided. This information is subject to change. The part numbers that TE has identified as EU RoHS compliant have a maximum concentration of 0.1% by weight in homogenous materials for lead, hexavalent chromium, mercury, PBB, PBDE, DBP, BBP, DEHP, DIBP, and 0.01% for cadmium, or qualify for an exemption to these limits as defined in the Annexes of Directive 2011/65/EU (RoHS2). Finished electrical and electronic equipment products will be CE marked as required by Directive 2011/65/EU. Components may not be CE marked. Additionally, the part numbers that TE has identified as EU ELV compliant have a maximum concentration of 0.1% by weight in homogenous materials for lead, hexavalent chromium, and mercury, and 0.01% for cadmium, or qualify for an exemption to these limits as defined in the Annexes of Directive 2000/53/EC (ELV). Regarding the REACH Regulation, the information TE provides on SVHC in articles for this part number is based on the latest European Chemicals Agency (ECHA) 'Guidance on requirements for substances in articles' posted at this URL: <https://echa.europa.eu/guidance-documents/guidance-on-reach>

## Compatible Parts



TE Part # CAT-C11-Z806726  
 QSFP28 to QSFP28 Cable Assembly:  
 30 AWG



TE Part # CAT-C11-N49  
 QSFP28-Two QSFP28 Cable  
 Assembly: 30 AWG



TE Part # CAT-C11-Z8  
 QSFP28 to QSFP28 Cable Assembly:  
 26 AWG



TE Part # CAT-C11-N490333  
 QSFP28-Four SFP+ Cable Assembly:  
 30 AWG



TE Part # CAT-C11-N490325  
 QSFP28-Four SFP+ Cable Assembly:  
 26 AWG



TE Part # CAT-Q17-N490325  
 QSFP56 to QSFP56 Cable Assembly:  
 30 AWG



TE Part # CAT-Q17-N49033  
 QSFP56-Two QSFP56 Cable  
 Assembly: 30 AWG



TE Part # CAT-C11-Q17  
 QSFP56 to QSFP56 Cable Assembly:  
 26 AWG



TE Part # CAT-Q17-N49011  
QSFP56-Four SFP56 Cable Assembly:  
30 AWG



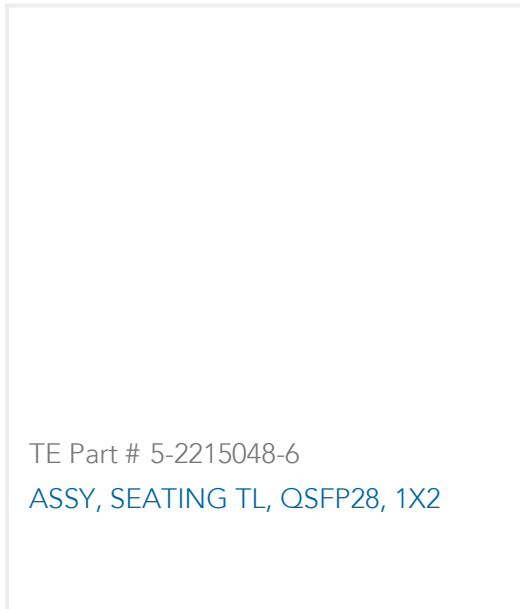
TE Part # CAT-Q17-N490333  
QSFP56-Four SFP56 Cable Assembly:  
26 AWG



TE Part # 1888810-2  
EMI/Dust Cover,XFP And QSFP

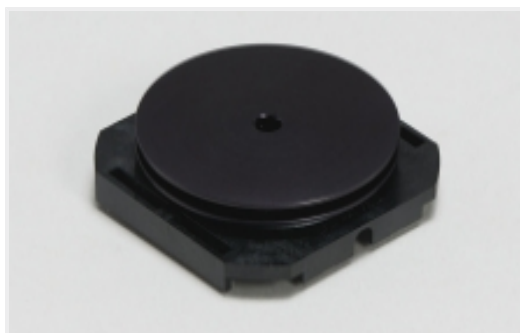


TE Part # 1551920-2  
zQSFP+ connector assembly



TE Part # 5-2215048-6  
ASSY, SEATING TL, QSFP28, 1X2

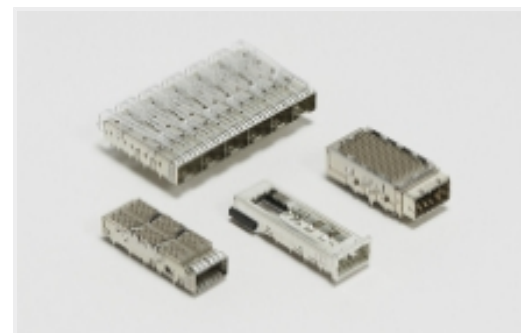
Also in the Series | **zQSFP+/QSFP28**



Heat Sinks(7)



Pluggable I/O Cable Assemblies(78)



Pluggable IO Connectors & Cages(424)

Customers Also Bought



TE Part #2309413-1  
DDR4 SODIMM 260P 9.2H STD



TE Part #2007198-1  
SFP+ 1x1 Cage Assembly, Press-



TE Part #2007464-2  
SFP+ 1x1 Cage Assy, PF,with Heatsink



TE Part #1551920-2  
zQSFP+ connector assembly



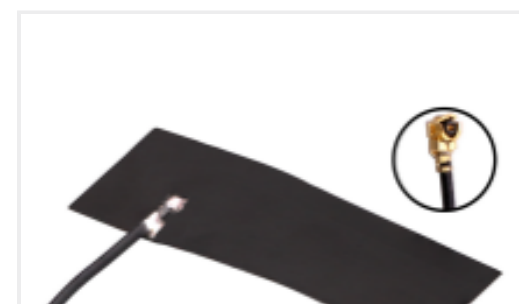
TE Part #2-1734742-4  
.5 FPC VT ZIF Type-A 24 CONT



TE Part #2227249-2  
1x4 Cage Assy Bhnd Bzl QSFP28



TE Part #5-104074-7  
04 SYSTEM 50 HDR SRRA SHRD SN



TE Part #L9000126-01  
Antenna Adh LPWA 698-960MHz 1.13  
100 UFL



## Documents

### CAD Files

#### 3D PDF

3D

Customer View Model

[ENG\\_CVM\\_CVM\\_2-2170808-3\\_A.2d\\_dxf.zip](#)

English

Customer View Model

[ENG\\_CVM\\_CVM\\_2-2170808-3\\_A.3d\\_igs.zip](#)

English

Customer View Model

[ENG\\_CVM\\_CVM\\_2-2170808-3\\_A.3d\\_stp.zip](#)

English

By downloading the CAD file I accept and agree to the [Terms and Conditions](#) of use.

### Product Specifications

#### Product Specification

English