



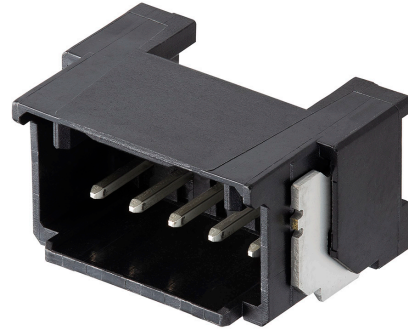
Part Number : [2170640051](#)

Product Description : Micro-One Wire-to-Board Header, Right-Angle, 2.00mm Pitch, Single Row, Glow-Wire Capable, Surface Mount, 5 Circuits, Tin-Bismuth Plating, Black

Series Number : 217064

Status : Active

Product Category : PCB Headers and Receptacles



Documents & Resources

Drawings

[2170640051_sd.pdf](#)

3D Models and Design Files

[2170640051.dxf](#)

[2170640051.pdf](#)

[2170640051_stp.zip](#)

Specifications


[2059790000-AS-000.pdf](#)

[2170649200-SPK-200.pdf](#)

[2059790000-PS-000.pdf](#)

Product Environment Compliance

Compliance

| | |
|--------------------|---|
| GADSL/IMDS | Compliant with Exemption 44; 33 |
| China RoHS |  |
| EU ELV | Not Relevant |
| Low-Halogen Status | Not Low-Halogen per IEC 61249-2-21 |
| REACH SVHC | Not Contained per D(2024)4144-DC (27 June 2024) |
| EU RoHS | Compliant per EU 2015/863 |

Multiple Part Product Compliance Statements

- Eu RoHS

- REACH SVHC

- Low-Halogen

Multiple Part Industry Compliance Documents

- IPC 1752A Class C
- IPC 1752A Class D
- Molex Product Compliance Declaration
- IEC-62474
- chemSHERPA (xml)

EU RoHS Certificate of Compliance

Part Details

General

| | |
|----------------|---|
| Status | Active |
| Category | PCB Headers and Receptacles |
| Series | 217064 |
| Description | Micro-One Wire-to-Board Header, Right-Angle, 2.00mm Pitch, Single Row, Glow-Wire Capable, Surface Mount, 5 Circuits, Tin-Bismuth Plating, Black |
| Application | Signal, Wire-to-Board |
| Component Type | PCB Header |
| Product Name | Micro-One |
| UPC | 195842005600 |

Agency

| | |
|----|--------|
| UL | E29179 |
|----|--------|

Electrical

| | |
|-------------------------------|------------------|
| Current - Maximum per Contact | 4.0A |
| Voltage - Maximum | 250V AC (RMS)/DC |

Physical

| | |
|--------------------------------|-------|
| Breakaway | No |
| Circuits (Loaded) | 5 |
| Circuits (maximum) | 5 |
| Color - Resin | Black |
| Durability (mating cycles max) | 30 |

| | |
|-------------------------------|-----------------------|
| First Mate / Last Break | No |
| Glow-Wire Capable | Yes |
| Lock to Mating Part | Yes |
| Material - Metal | Brass |
| Material - Plating Mating | Tin-Bismuth |
| Material - Resin | Polyamide |
| Net Weight | 991.052/mg |
| Number of Rows | 1 |
| Orientation | Right Angle |
| Packaging Type | Embossed Tape on Reel |
| PCB Retention | Yes |
| Pitch - Mating Interface | 2.00mm |
| Polarized to PCB | Yes |
| Shrouded | Fully |
| Temperature Range - Operating | -40° to +105°C |
| Termination Interface Style | Surface Mount |

Mates With / Use With

Mates with Part(s)

| Description | Part Number |
|---|---------------|
| Micro-One Wire-to-Board Receptacle Housings | <u>205979</u> |
| Micro-One Single Row Receptacle Housings | <u>212724</u> |