

177903-1 ✓ ACTIVE



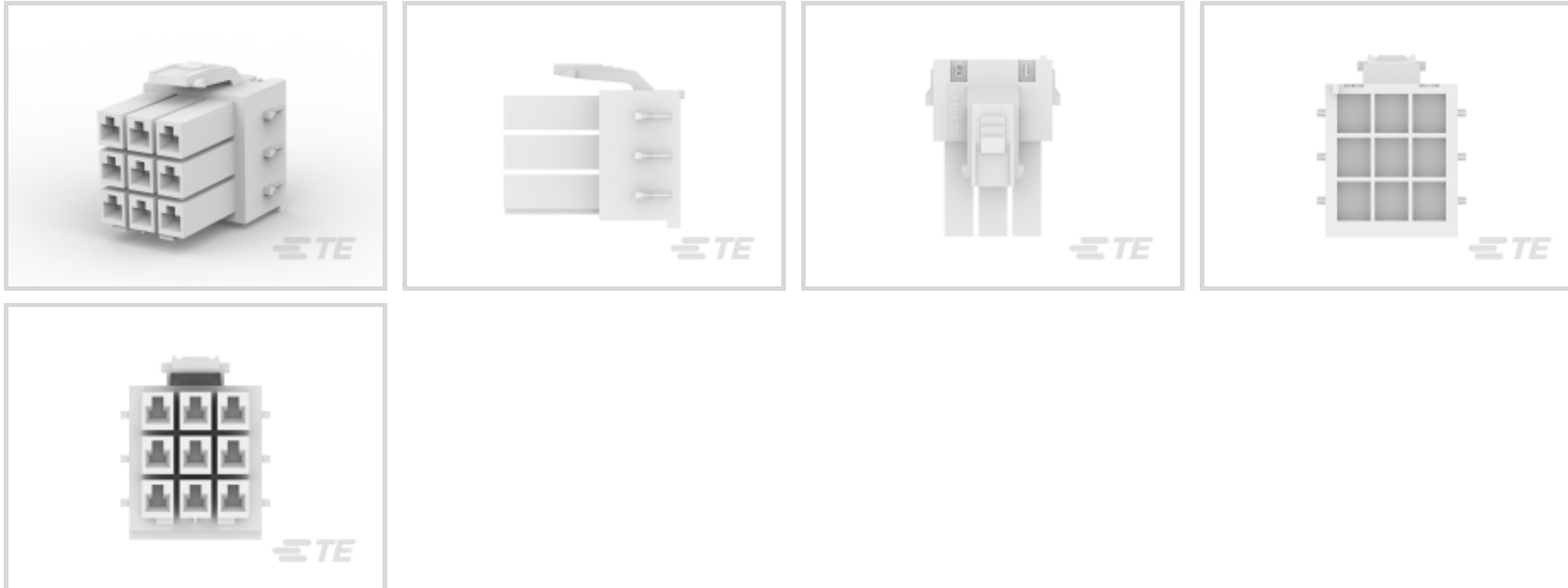
**Power Double Lock**

TE Internal #: 177903-1

Housing, Plug, Wire-to-Wire, 9 Position, 3.96 mm [.156 in]  
Centerline, Wire & Cable, UL 94V-0, Power Double Lock,  
Rectangular Power Connectors

[View on TE.com >](#)

Connectors > Power Connectors > Rectangular Power > Rectangular Power Connectors > STD Temp Power Double Lock Plug



EU RoHS Compliance: **Compliant**

EU ELV Compliance: **Compliant**

Rectangular Power Connector Type: **Housing**

Connector & Housing Type: **Plug**

Connector System: **Wire-to-Wire**

[All STD Temp Power Double Lock Plug \(66\)](#)

### Features

#### Other

EU RoHS Compliance	Compliant
EU ELV Compliance	Compliant

#### Product Type Features

Compatible With Discrete Wire Type	Stranded
Rectangular Power Connector Type	Housing
Connector & Housing Type	Plug
Connector System	Wire-to-Wire
Sealable	No
Connector & Contact Terminates To	Wire & Cable

#### Configuration Features

Number of Positions	9
Number of Power Positions	0



Number of Signal Positions	0
----------------------------	---

Number of Rows	3
----------------	---

### Electrical Characteristics

Operating Voltage	300 VAC
-------------------	---------

### Contact Features

Contact Layout	Matrix
----------------	--------

Contact Retention Within Housing	Without
----------------------------------	---------

Contact Type	Receptacle
--------------	------------

### Termination Features

Termination Method to Wire & Cable	Crimp
------------------------------------	-------

### Mechanical Attachment

Connector Mounting Type	Cable Mount (Free-Hanging)
-------------------------	----------------------------

### Housing Features

Centerline (Pitch)	3.96 mm [.156 in]
--------------------	-------------------

Housing Color	Natural
---------------	---------

Housing Material	Nylon 6/6
------------------	-----------

### Dimensions

Compatible Insulation Diameter Range	3.1 mm
--------------------------------------	--------

Product Width	15.2 mm
---------------	---------

Product Length	20.6 mm
----------------	---------

Connector Height	13.8 mm
------------------	---------

Row-to-Row Spacing	4.6 mm [.181 in]
--------------------	------------------

### Usage Conditions

Operating Temperature Range	-30 – 105 °C [-22 – 221 °F]
-----------------------------	-----------------------------

### Operation/Application

Circuit Application	Power & Signal
---------------------	----------------

### Industry Standards

Compatible With Agency/Standards Products	UL, CSA
---	---------

UL Flammability Rating	UL 94V-0
------------------------	----------

Glow Wire Rating	Standard Part - Not Glow Wire
------------------	-------------------------------

### Packaging Features



Packaging Quantity	150
Packaging Method	Bag

### Product Compliance

[For compliance documentation, visit the product page on TE.com>](#)

EU RoHS Directive 2011/65/EU	Compliant
EU ELV Directive 2000/53/EC	Compliant
China RoHS 2 Directive MIIT Order No 32, 2016	No Restricted Materials Above Threshold
EU REACH Regulation (EC) No. 1907/2006	Current ECHA Candidate List: JUNE 2024 (241) Candidate List Declared Against: JUNE 2024 (241) Does not contain REACH SVHC
Halogen Content	Low Halogen - Br, Cl, F, I < 900 ppm per homogenous material. Also BFR/CFR/PVC Free
Solder Process Capability	Not applicable for solder process capability

#### Product Compliance Disclaimer

This information is provided based on reasonable inquiry of our suppliers and represents our current actual knowledge based on the information they provided. This information is subject to change. The part numbers that TE has identified as EU RoHS compliant have a maximum concentration of 0.1% by weight in homogenous materials for lead, hexavalent chromium, mercury, PBB, PBDE, DBP, BBP, DEHP, DIBP, and 0.01% for cadmium, or qualify for an exemption to these limits as defined in the Annexes of Directive 2011/65/EU (RoHS2). Finished electrical and electronic equipment products will be CE marked as required by Directive 2011/65/EU. Components may not be CE marked. Additionally, the part numbers that TE has identified as EU ELV compliant have a maximum concentration of 0.1% by weight in homogenous materials for lead, hexavalent chromium, and mercury, and 0.01% for cadmium, or qualify for an exemption to these limits as defined in the Annexes of Directive 2000/53/EC (ELV). Regarding the REACH Regulation, the information TE provides on SVHC in articles for this part number is based on the latest European Chemicals Agency (ECHA) 'Guidance on requirements for substances in articles' posted at this URL: <https://echa.europa.eu/guidance-documents/guidance-on-reach>

### Compatible Parts

 <p>TE Part # 177911-1 POWER DBL LOCK CAP HSG P/M 9P</p>	 <p>TE Part # CAT-P87024-R2435 Power Double Lock Receptacle</p>	 <p>TE Part # 179593-1 AMP POWER D/LOCK RECCONT. L/P</p>	 <p>TE Part # 179592-1 AMP POWER D/LOCK REC CONT. L/P</p>
---	--	---	--



TE Part # 179592-2  
POWER D/LOCK REC CONT. H/P L/P



TE Part # 179593-2  
POWER D/LOCK REC CONT. H/P L/P



TE Part # 2005254-1  
PDL 9P PLUG 3.96 T/R(GWT) NAT



TE Part # 2324841-1  
PDL 3.96MM CAP HOUSING 9 POS, F/H

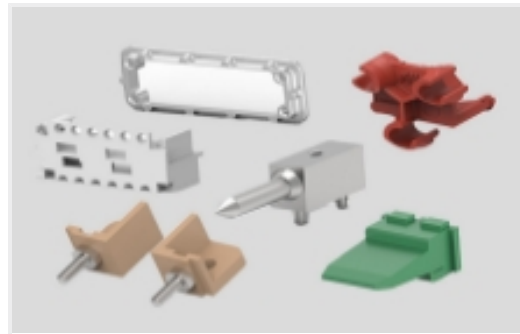


TE Part # 5-177911-1  
POWER DBL LOCK CAP HSG P/M 9P (GWT)

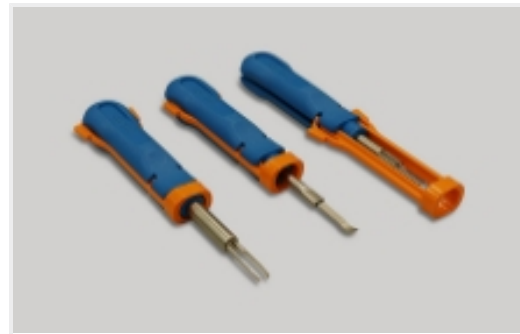
Also in the Series | **Power Double Lock**



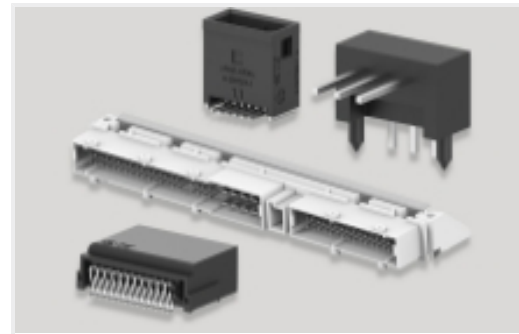
Connector Contacts(24)



Connector Hardware(14)



Insertion & Extraction Tools(2)



PCB Headers & Receptacles(43)



Rectangular Power Connectors(240)

Customers Also Bought



TE Part #177909-1  
POWER DBL LOCK CAP HSG P/M 6P



TE Part #1-1971875-3  
PTL 3X3 CAP PANEL MT STD TEMP KEY A NAT



TE Part #1969608-3  
3P VAL-U-LOK TPA 22-18 AWG



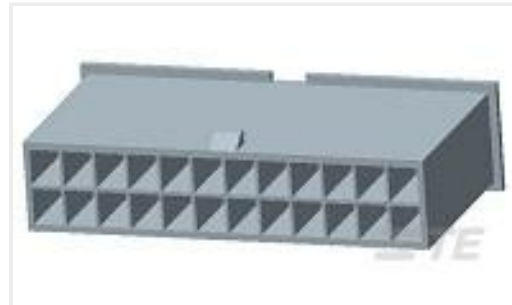
TE Part #1-1969443-3  
EP 2.5 TPA Retainer, 13 Pos



TE Part #1-1969442-3  
EP 2.5 TPA Housing, 13 Pos



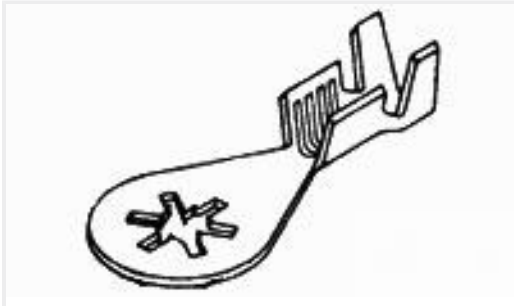
TE Part #521229-1  
PL 250 HOUSING RECEPTACLE  
NYLON 6/6



TE Part #1969612-4  
4P FH PLUG VAL-U-LOK V0



TE Part #2232900-6  
ECONOMY POWER TPA RETAINER



TE Part #62612-1  
RING .164 12-10 AWG 0245 SST

## Documents

### Product Drawings

[POWER DBL LOCK PLUG HSG 9P](#)

English

### CAD Files

[3D PDF](#)

3D

Customer View Model

[ENG\\_CVM\\_CVM\\_177903-1\\_P.2d\\_dxf.zip](#)

English

Customer View Model

[ENG\\_CVM\\_CVM\\_177903-1\\_P.3d\\_igs.zip](#)

English

Customer View Model

[ENG\\_CVM\\_CVM\\_177903-1\\_P.3d\\_stp.zip](#)

English

[3D PDF](#)

English

Customer View Model

[ENG\\_CVM\\_177903-1\\_E.3d\\_igs.zip](#)

English

Customer View Model

[ENG\\_CVM\\_177903-1\\_E.3d\\_stp.zip](#)

English

Customer View Model

[ENG\\_CVM\\_177903-1\\_E.2d\\_dxf.zip](#)

English



By downloading the CAD file I accept and agree to the [Terms and Conditions](#) of use.

### Datasheets & Catalog Pages

[SOFT\\_SHELL\\_PIN\\_AND\\_SOCKET\\_CONNECTORS\\_CATALOG](#)

English

### Product Specifications

[Application Specification](#)

English

### Instruction Sheets

[Instruction Sheet \(non U.S.\)](#)

English

[AMP POWER DOUBLELOCK CONNECTOR SERIES](#)

English

### Agency Approvals

[CSA Certificate](#)

English