

2320924-2 ✓ ACTIVE

AMP | AMPSEAL 16

TE Internal #: 2320924-2

Housing for Female Terminals, Wire-to-Wire, 8 Position, 4.5 mm [.177 in] Centerline, Sealable, Gray, Wire & Cable, AMPSEAL 16

[View on TE.com >](#)



Connectors > Automotive Connectors > Automotive Housings > AMPSEAL 16 Housings



Connector System: **Wire-to-Wire**

Number of Positions: **8**

Connector & Housing Type: **Housing for Female Terminals**

Centerline (Pitch): **4.5 mm [.177 in]**

Sealable: **Yes**

[All AMPSEAL 16 Housings \(224\)](#)

Features

Product Type Features

Connector System	Wire-to-Wire
Connector & Housing Type	Housing for Female Terminals
Sealable	Yes
Connector & Contact Terminates To	Wire & Cable
Primary Locking Feature	Integrated in Housing
Mixed & Hybrid Connector	No
Connector Shape	Rectangular

Configuration Features

Number of Positions	8
Number of Rows	2



Blank Cavity Position	0
-----------------------	---

Housing Features

Centerline (Pitch)	4.5 mm [.177 in]
Housing Material	PBT GF

Contact Features

Mating Pin Diameter	1.6 mm [.062 in]
Contact Size	1.6mm
Contact Type	Socket

Body Features

Primary Product Color	Gray
Connector & Keying Code	B
Cable Exit Angle	180°

Mechanical Attachment

Connector Mounting Type	Cable Mount (Free-Hanging)
Strain Relief	Add By Accessory
Terminal Position Assurance	Yes
Mating Alignment Type	Keyed
Mating Alignment	With

Usage Conditions

Operating Temperature (Max)	150 °C [302 °F]
Operating Temperature Range	-40 – 150 °C [-40 – 302 °F]

Other

Connector Position Assurance Capable	Yes
EU RoHS Compliance	Compliant
EU ELV Compliance	Compliant
Serviceable	Yes

Electrical Characteristics

Operating Voltage	250 VDC
-------------------	---------

Dimensions

Row-to-Row Spacing	5.3 mm [.209 in]
Product Width	29.33 mm [1.155 in]



Product Length	36.8 mm[1.449 in]
----------------	-------------------

Connector Height	31.5 mm[1.24 in]
------------------	------------------

Industry Standards

IP Rating	IP67
-----------	------

UL Flammability Rating	UL 94V-0
------------------------	----------

Packaging Features

Packaging Method	Tube
------------------	------

Product Compliance

[For compliance documentation, visit the product page on TE.com>](#)

EU RoHS Directive 2011/65/EU	Compliant
------------------------------	-----------

EU ELV Directive 2000/53/EC	Compliant
-----------------------------	-----------

China RoHS 2 Directive MIIT Order No 32, 2016	No Restricted Materials Above Threshold
---	---

EU REACH Regulation (EC) No. 1907/2006	<p>Current ECHA Candidate List: JUNE 2024 (241) Candidate List Declared Against: JAN 2024 (240) SVHC > Threshold: Octamethylcyclotetrasiloxane (D4) (.5% in Component Part) Decamethylcyclopentasiloxane (D5) (.5% in Component Part) Dodecamethylcyclohexasiloxane (D6) (.5% in Component Part)</p>
--	--

Article Safe Usage Statements:

Wash thoroughly after handling. Recycle if possible and dispose of the article by following all applicable governmental regulations relevant to your geographic location.

Halogen Content	Not Low Halogen - contains Br or Cl > 900 ppm.
-----------------	--

Solder Process Capability	Not reviewed for solder process capability
---------------------------	--

Product Compliance Disclaimer

This information is provided based on reasonable inquiry of our suppliers and represents our current actual knowledge based on the information they provided. This information is subject to change. The part numbers that TE has identified as EU RoHS compliant have a maximum concentration of 0.1% by weight in homogenous materials for lead, hexavalent chromium, mercury, PBB, PBDE, DBP, BBP, DEHP, DIBP, and 0.01% for cadmium, or qualify for an exemption to these limits as defined in the Annexes of Directive 2011/65/EU (RoHS2). Finished electrical and electronic equipment products will be CE marked as required by Directive 2011/65/EU. Components may not be CE marked. Additionally, the part numbers that TE has identified as EU ELV compliant have a maximum concentration of 0.1% by weight in homogenous materials for lead, hexavalent chromium, and mercury, and 0.01% for cadmium, or qualify for an exemption to these limits as defined in the Annexes of Directive 2000/53/EC (ELV). Regarding the REACH Regulation, the information TE provides on SVHC in articles for this part number is based on the latest European Chemicals Agency (ECHA) 'Guidance on requirements for substances in articles' posted at this URL: <https://echa.europa.eu/guidance-documents/guidance-on-reach>



Compatible Parts



TE Part # 2320917-1
AS16,CAP ASSY,HT,08P,N SEAL,
CODE A

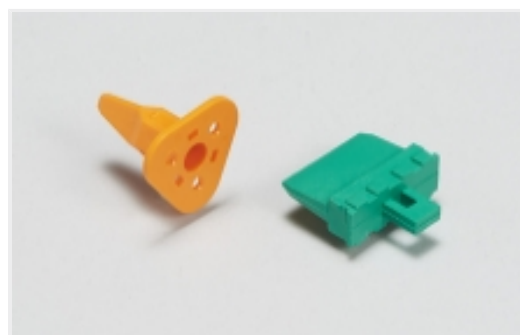


TE Part # 2272179-5
AMPSEAL 16 PERIPHERAL SEAL 8P -
SERVICE

Also in the Series | AMPSEAL 16



Automotive Connector Caps & Covers
(5)



Automotive Connector Locks &
Position Assurance(6)



Automotive Housings(239)



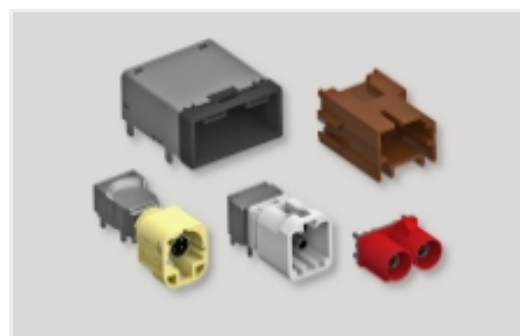
Automotive Terminals(35)



Connector Backshells(88)



Connector Seals & Cavity Plugs(10)



Data Connectivity Headers(2)



Data Connectivity Housings(3)



Other Automotive Connector
Accessories(8)

Customers Also Bought



TE Part #2-330648-1
PIDG 22-16 22-18 MIL R 4; TAPE



TE Part #788189-2
CPC 17-3 RCPT ASY,REV SEX



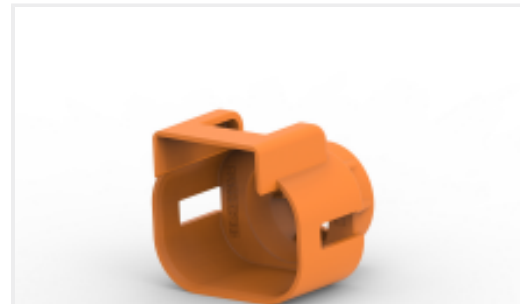
TE Part #2177090-3
STEEL, OUTER FERRULE, 8MM HV,
25SQMM



TE Part #1-1633961-2
CRIMPER, INSULATION F PREMIUM
25SQMM



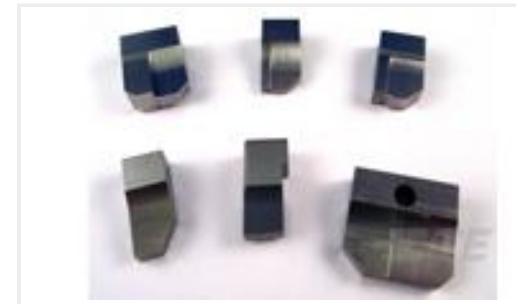
TE Part #1587940-3
CABLE SEAL RETAINER, SIZE C



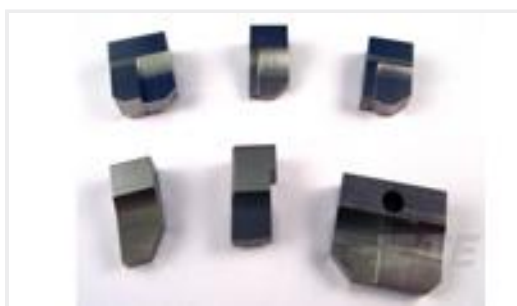
TE Part #2103013-3
CABLE SEAL RETAINER, SIZE 2, OR,
HVA280



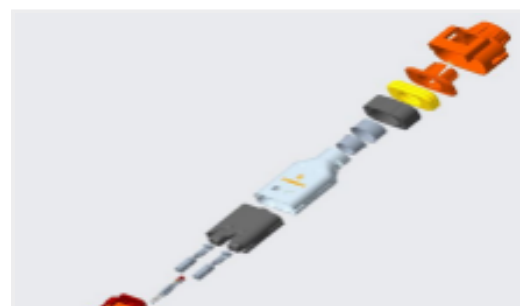
TE Part #2208669-3
8MM HV, CONTACT, ASSY



TE Part #4-1633932-0
ANVIL, COMBINATION



TE Part #464291-5
ANVIL, SAND-BLASTED 12-10



TE Part #YHV280-2PM-P-4MM-B
HVA280-2pmm, pass, 4sqmm, Key B

Documents

Product Drawings

[AS16, PLUG ASSY, HT, 08P, N SEAL, CODE B](#)

English

CAD Files

[3D PDF](#)

3D

Customer View Model

[ENG_CVM_CVM_2320924-2_A.2d_dxf.zip](#)

English

Customer View Model

[ENG_CVM_CVM_2320924-2_A.3d_igs.zip](#)

English

Customer View Model

[ENG_CVM_CVM_2320924-2_A.3d_stp.zip](#)

English

By downloading the CAD file I accept and agree to the [Terms and Conditions](#) of use.

Product Specifications



Application Specification

English