

1355328-1 ✓ ACTIVE

AMP | AMP MCP 9.5, AMP MCP Connector System

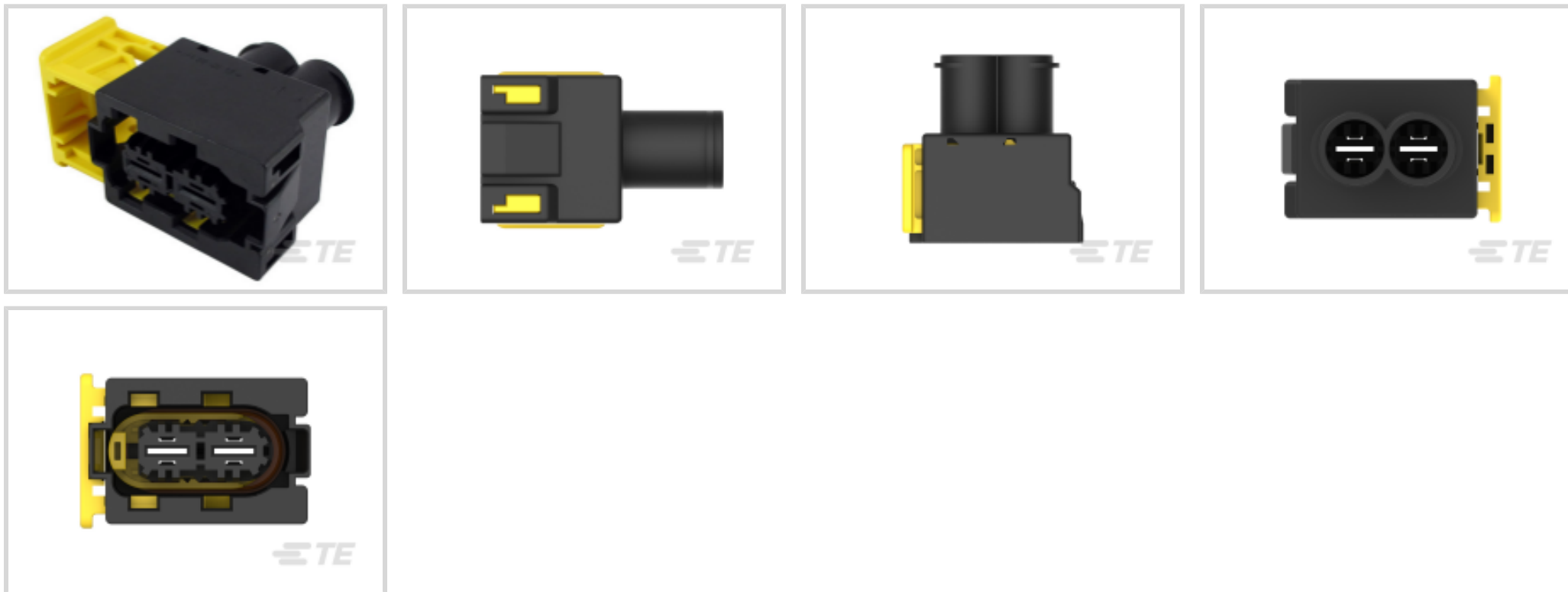
TE Internal #: 1355328-1

Housing for Female Terminals, Wire-to-Wire, 2 Position, 16.5 mm [.649 in] Centerline, Sealable, Black, Wire & Cable, Power, Hybrid

[View on TE.com >](#)



Connectors > Automotive Connectors > Automotive Housings > AMP MCP, SEALED CONNECTOR HOUSING



Connector System: **Wire-to-Wire**

Number of Positions: **2**

Connector & Housing Type: **Housing for Female Terminals**

Centerline (Pitch): **16.5 mm [.649 in]**

Sealable: **Yes**

[All AMP MCP, SEALED CONNECTOR HOUSING \(130\)](#)

Features

Product Type Features

Connector System	Wire-to-Wire
Connector & Housing Type	Housing for Female Terminals
Sealable	Yes
Connector & Contact Terminates To	Wire & Cable
Primary Locking Feature	Integrated in Housing
Mixed & Hybrid Connector	No
Connector Shape	Rectangular

Configuration Features

Number of Positions	2
Number of Rows	1

Housing Features

Centerline (Pitch)	16.5 mm [.649 in]
Housing Material	PA 66 GF13



Contact Features

Mating Tab Width	9.5 mm[.374 in]
Contact Current Rating (Max)	78 A
Contact Size	9.5mm
Contact Type	Receptacle

Body Features

Primary Product Color	Black
Cable Exit Angle	180°

Operation/Application

Circuit Application	Power
---------------------	-------

Mechanical Attachment

Connector Mounting Type	Cable Mount (Free-Hanging)
Strain Relief	Without
Terminal Position Assurance	Yes
Mating Alignment Type	Polarized
Mating Alignment	With

Usage Conditions

Operating Temperature (Max)	130 °C[266 °F]
Operating Temperature Range	-40 – 130 °C[-40 – 266 °F]

Electrical Characteristics

Nominal Voltage Architecture	28 V
Operating Voltage	28 VDC

Other

Connector Position Assurance Capable	No
EU RoHS Compliance	Compliant
EU ELV Compliance	Compliant
Serviceable	Yes

Dimensions

Product Width	38 mm[1.49 in]
Product Length	56.9 mm[2.24 in]
Connector Height	59 mm[2.32 in]

Industry Standards



IP Rating	IP69K, IP67
UL Flammability Rating	UL 94HB

Packaging Features

Packaging Quantity	220
Packaging Method	Container

Product Compliance

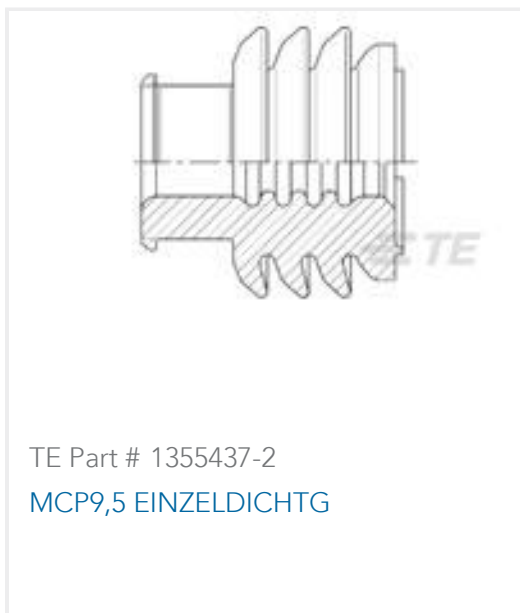
[For compliance documentation, visit the product page on TE.com>](#)

EU RoHS Directive 2011/65/EU	Compliant
EU ELV Directive 2000/53/EC	Compliant
China RoHS 2 Directive MIIT Order No 32, 2016	No Restricted Materials Above Threshold
EU REACH Regulation (EC) No. 1907/2006	Current ECHA Candidate List: JUNE 2024 (241) Candidate List Declared Against: JUNE 2024 (241) Does not contain REACH SVHC
Halogen Content	BFR/CFR/PVC Free, but Br/Cl >900 ppm in other sources.
Solder Process Capability	Not applicable for solder process capability

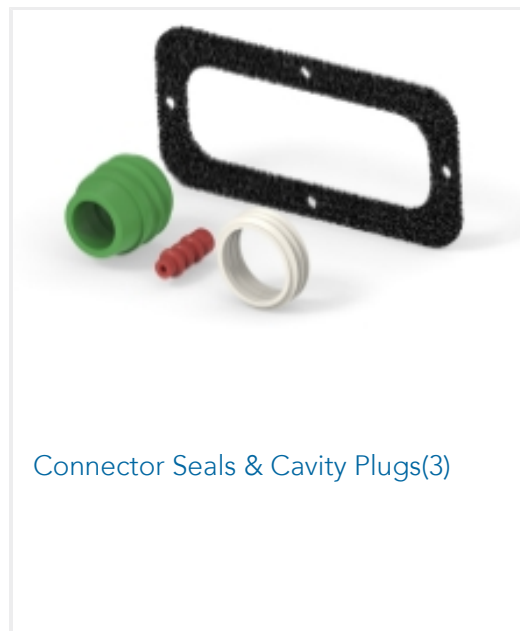
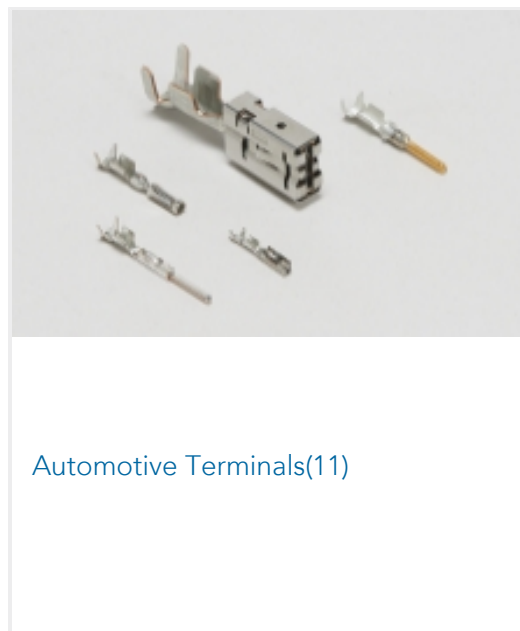
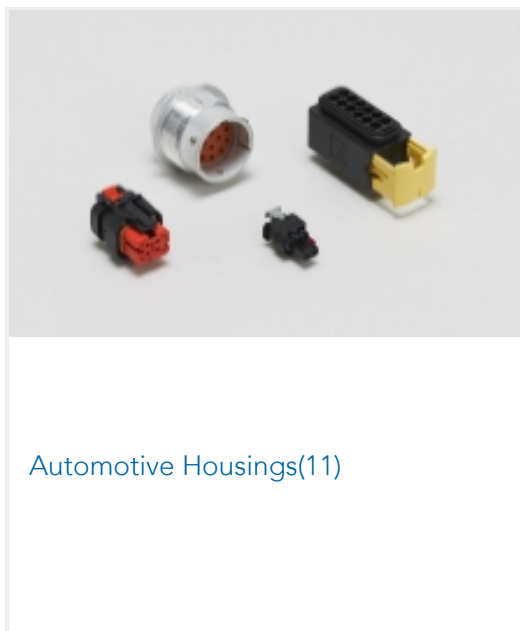
Product Compliance Disclaimer

This information is provided based on reasonable inquiry of our suppliers and represents our current actual knowledge based on the information they provided. This information is subject to change. The part numbers that TE has identified as EU RoHS compliant have a maximum concentration of 0.1% by weight in homogenous materials for lead, hexavalent chromium, mercury, PBB, PBDE, DBP, BBP, DEHP, DIBP, and 0.01% for cadmium, or qualify for an exemption to these limits as defined in the Annexes of Directive 2011/65/EU (RoHS2). Finished electrical and electronic equipment products will be CE marked as required by Directive 2011/65/EU. Components may not be CE marked. Additionally, the part numbers that TE has identified as EU ELV compliant have a maximum concentration of 0.1% by weight in homogenous materials for lead, hexavalent chromium, and mercury, and 0.01% for cadmium, or qualify for an exemption to these limits as defined in the Annexes of Directive 2000/53/EC (ELV). Regarding the REACH Regulation, the information TE provides on SVHC in articles for this part number is based on the latest European Chemicals Agency (ECHA) 'Guidance on requirements for substances in articles' posted at this URL: <https://echa.europa.eu/guidance-documents/guidance-on-reach>

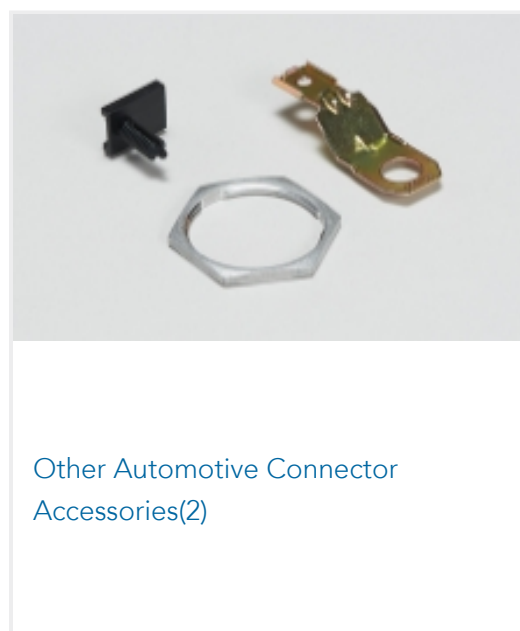
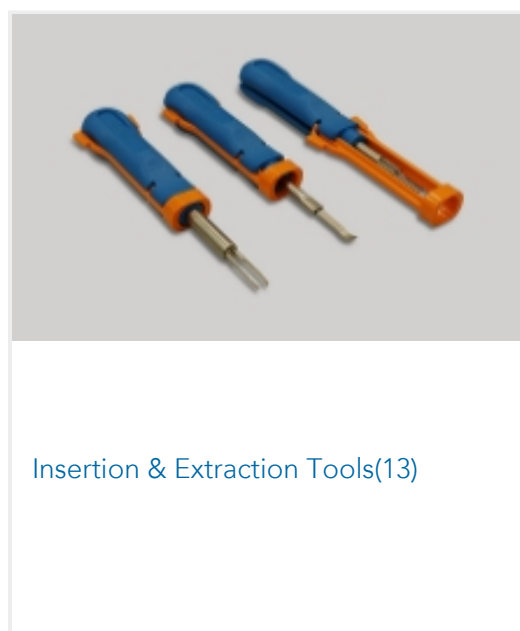
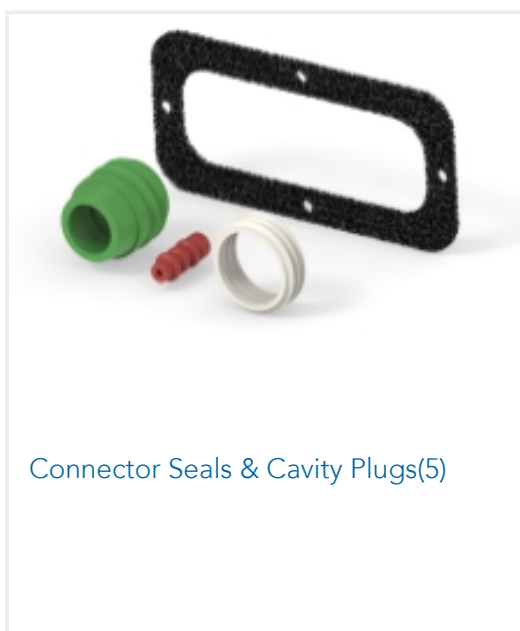
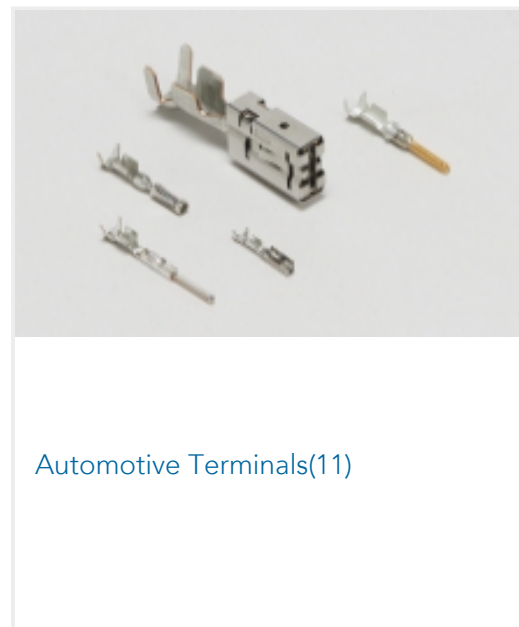
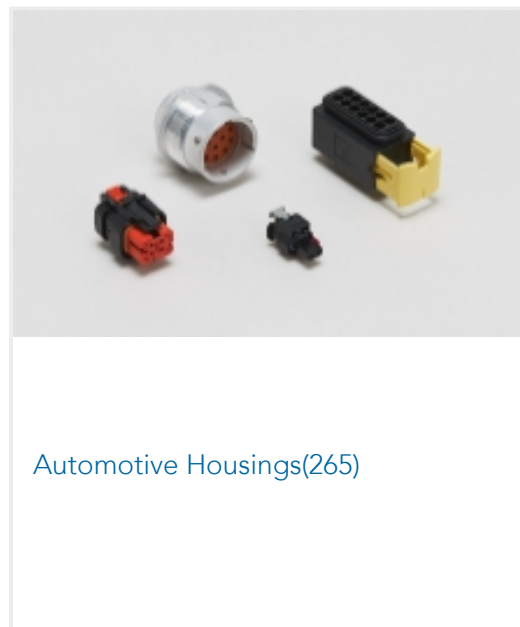
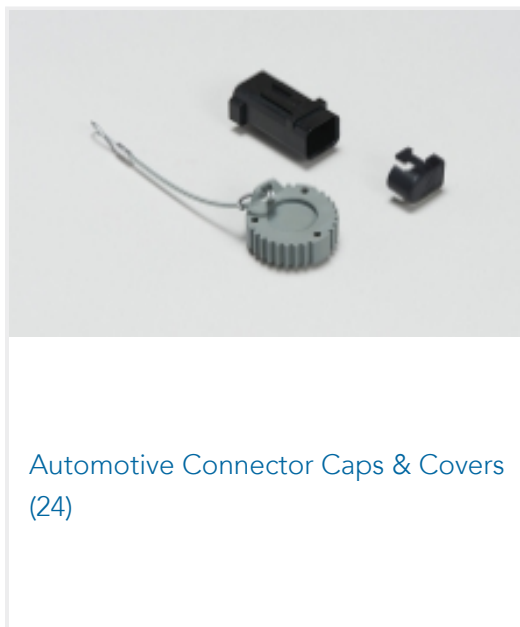
Compatible Parts



Also in the Series | **AMP MCP 9.5**



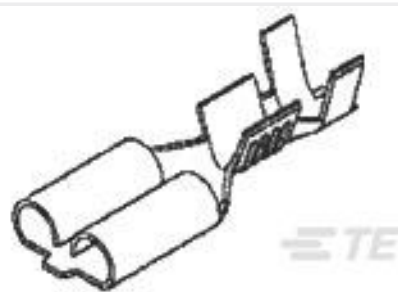
Also in the Series | **AMP MCP Connector System**



Customers Also Bought



TE Part #174662-7
12 POS PLUG MARK II+



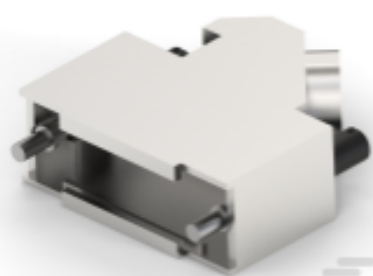
TE Part #170032-1
250 FASTON,REC.,20-14 AWG,BR



TE Part #1-967591-1
AMP MCP 9.5, CONTACT, SWS



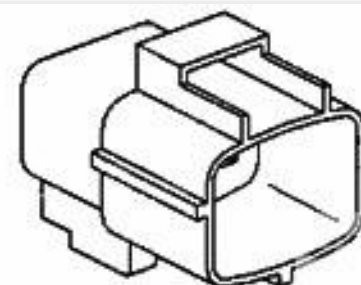
TE Part #927827-1
SPT REC 6.3 Contact SRC Sn



TE Part #4-1478763-6
METAL BACKSHELL 15 WAY 45 DEGR



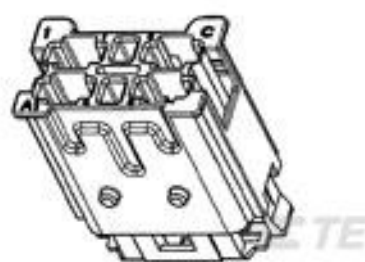
TE Part #1443996-3
COVER, 60 POSITION - NO EXTERIOR TEXT



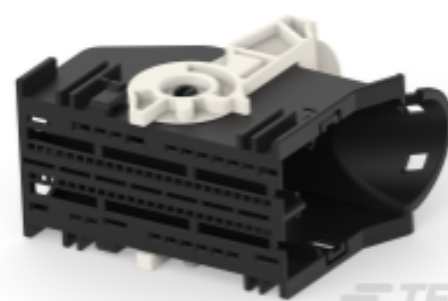
TE Part #368301-1
E-S MK-2(+) 15P CAP HSG BLACK TEXT



TE Part #936429-2
HYBRID 42P CAP ASSY BLK



TE Part #1544147-1
PORTE CLIPS MONTE



TE Part #2177472-1
73POS, MIXED,REC HSG,ASSY,BK

Documents

Product Drawings

[2POS,AMP MCP 9.5,REC HSG ASSY,SLD](#)

English

CAD Files

Customer View Model

[ENG_CVM_CVM_1355328-1_A.2d_dxf.zip](#)

English

3D PDF

3D

Customer View Model

[ENG_CVM_CVM_1355328-1_A.3d_igs.zip](#)

English

Customer View Model

[ENG_CVM_CVM_1355328-1_A.3d_stp.zip](#)

English

By downloading the CAD file I accept and agree to the [Terms and Conditions](#) of use.

Datasheets & Catalog Pages



[AMP MCP 9.5 Two Position Connectors Series Brief](#)

English

[AMP MCP 9.5 Two Position Connectors Infographic](#)

English

[Product Specifications](#)

[Application Specification](#)

German