

NOTES:

- 1. MATERIAL: SEE TABLE
- 2. FINISHES: SEE TABLE
- 3. INCH DIMENSIONS ARE SHOWN IN BRACKETS [.XXX].
- 4. "XX" REFERS TO NUMBER OF CIRCUITS.
- 5. ASSEMBLY IS ROHS COMPLIANT.

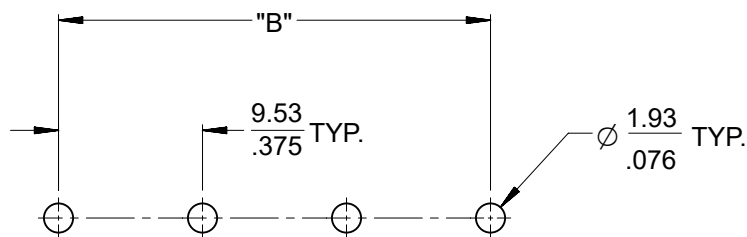
7	XX	#6-32 PH/SLOTTED SCREW W/ WASHER (OPT -49,-50)	BRASS	NICKEL PLATE
6	XX	#6-32 PH/SLOTTED SCREW W/ WASHER (OPT -50)	STEEL	ZN, CLEAR CHROMATE
5	XX	#6-32 PH/SLOTTED SCREW (OPT -49)	BRASS	NICKEL PLATE
4	XX	#6-32 PH/SLOTTED SCREW (STANDARD)	STEEL	ZN, CLEAR CHROMATE
3	XX	TERMINAL, WW	BRASS	TIN PLATE
2	2	MOUNTING PLATE	BRASS	NICKEL PLATE
1	1	INSULATOR	PBT	BLACK
ITEM	QTY.	DESCRIPTION	MATERIAL	FINISH

DOCUMENT STATUS	P1	RELEASE DATE	2025/07/02	10:09:26
-----------------	----	--------------	------------	----------

THIS DRAWING CONTAINS INFORMATION THAT IS PROPRIETARY TO MOLEX ELECTRONIC TECHNOLOGIES, LLC AND SHOULD NOT BE USED WITHOUT WRITTEN PERMISSION

DIMENSION UNITS	SCALE	CURRENT REV DESC: REMOVED OBSOLETE PART NUMBERS AS PER PCN#515979		
MM/IN	2:1	<p>molex</p> <p>9.53MM [.375] SR BTS, WW ASSY, LOW PROFILE</p> <p>PRODUCT CUSTOMER DRAWING</p>		
GENERAL TOLERANCES (UNLESS SPECIFIED)				
4 PLACES ±	±	EC NO: 823502	2025/05/02	DOCUMENT NUMBER
3 PLACES ±	± 0.005	DRWN: MADHAM5	2025/07/02	SD-38711-003
2 PLACES ±	± 0.13 ± 0.01	CHK'D: GGA	2025/07/02	PSD 001
1 PLACE ±	± 0.3 ±	APPR: GGA	2025/07/02	A2
0 PLACES ±	±	INITIAL REVISION:		
ANGULAR TOL ±	± 2.0°	DRWN: C.YORK	2007/03/20	SHEET NUMBER
		APPR: JMACNEIL	2007/03/20	1 OF 2
DRAFT WHERE APPLICABLE MUST REMAIN WITHIN DIMENSIONS		THIRD ANGLE PROJECTION	DRAWING	SERIES
			B-SIZE	38711
		MATERIAL NUMBER	CUSTOMER	
		SEE TABLE	GENERAL MARKET	

MATERIAL NO. (OPT -49,-50)	MATERIAL NO. (OPT -49)	MATERIAL NO. (OPT -50)	MATERIAL NO. (STANDARD)	NUMBER OF CIRCUITS "XX"	DIM. "A"		DIM. "B"		DIM. "C"	
---	38711-2802	---	38711-2202	02	40.2	[1.58]	9.53	[.375]	28.6	[1.13]
---	---	---	38711-2203	03	49.7	[1.96]	19.05	[.750]	38.1	[1.50]
38719-0614	---	---	38711-2204	04	59.2	[2.33]	28.58	[1.125]	47.6	[1.88]
---	---	---	38711-2205	05	68.7	[2.71]	38.10	[1.500]	57.2	[2.25]
---	---	38711-3406	38711-2206	06	78.3	[3.08]	47.63	[1.875]	66.7	[2.63]
---	38711-2807	---	38711-2207	07	87.8	[3.46]	57.15	[2.250]	76.2	[3.00]
---	---	38711-3408	---	08	97.3	[3.83]	66.68	[2.625]	85.7	[3.38]
---	---	---	---	10	116.4	[4.58]	85.73	[3.375]	104.8	[4.13]
---	38711-2811	38711-3411	---	11	125.9	[4.96]	95.25	[3.750]	114.3	[4.50]
---	---	38711-3412	---	12	135.4	[5.33]	104.78	[4.125]	123.8	[4.88]
---	38711-2813	38711-3413	38711-2213	13	144.9	[5.71]	114.30	[4.500]	133.4	[5.25]
---	38711-2814	38711-3414	---	14	154.5	[6.08]	123.83	[4.875]	142.9	[5.63]
---	38711-2815	38711-3415	---	15	164.0	[6.46]	133.35	[5.250]	152.4	[6.00]
---	---	38711-3416	---	16	173.5	[6.83]	142.88	[5.625]	161.9	[6.38]
---	38711-2817	38711-3417	38711-2217	17	183.0	[7.21]	152.40	[6.000]	171.5	[6.75]
---	---	38711-3418	---	18	192.6	[7.58]	161.93	[6.375]	181.0	[7.13]
---	38711-2819	38711-3419	---	19	202.1	[7.96]	171.45	[6.750]	190.5	[7.50]
---	38711-2820	38711-3420	---	20	211.6	[8.33]	180.98	[7.125]	200.0	[7.88]
---	38711-2821	38711-3421	38711-2221	21	221.1	[8.71]	190.50	[7.500]	209.6	[8.25]
---	---	38711-3422	---	22	230.7	[9.08]	200.03	[7.875]	219.1	[8.63]
---	38711-2823	38711-3423	38711-2223	23	240.2	[9.46]	209.55	[8.250]	228.6	[9.00]
---	38711-2824	38711-3424	---	24	249.7	[9.83]	219.08	[8.625]	238.1	[9.38]
---	---	38711-3425	---	25	259.2	[10.21]	228.60	[9.000]	247.7	[9.75]
---	38711-2826	38711-3426	38711-2226	26	268.8	[10.58]	238.13	[9.375]	257.2	[10.13]



RECOMMENDED PCB LAYOUT

THIS DRAWING CONTAINS INFORMATION THAT IS PROPRIETARY TO MOLEX ELECTRONIC TECHNOLOGIES, LLC AND SHOULD NOT BE USED WITHOUT WRITTEN PERMISSION													
DIMENSION UNITS MM/IN		SCALE 2:1		CURRENT REV DESC: REMOVED OBSOLETE PART NUMBERS AS PER PCN#515979				<p>9.53MM [.375] SR BTS, WW ASSY, LOW PROFILE</p>					
GENERAL TOLERANCES (UNLESS SPECIFIED)				EC NO: 823502									
				DRWN: MADHAM5 2025/05/02				DOCUMENT NUMBER					
4 PLACES ±		±		CHK'D: GGA 2025/07/02				SD-38711-003		PSD 001		REVISION	
3 PLACES ±		± 0.005		APPR: GGA 2025/07/02								A2	
2 PLACES ± 0.13		± 0.01		INITIAL REVISION:				MATERIAL NUMBER		CUSTOMER		SHEET NUMBER	
1 PLACE ± 0.3		±		DRWN: C.YORK 2007/03/20				SEE TABLE		GENERAL MARKET		2 OF 2	
0 PLACES ±		±		APPR: JMACNEIL 2007/03/20									
ANGULAR TOL ± 2.0°				THIRD ANGLE PROJECTION		DRAWING		SERIES		MATERIAL NUMBER		CUSTOMER	
DRAFT WHERE APPLICABLE MUST REMAIN WITHIN DIMENSIONS						B-SIZE		38711					