



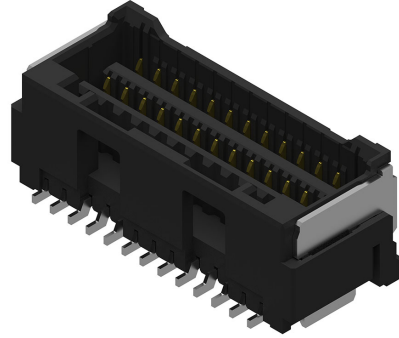
**Part Number :** [2132271011](#)

**Product Description :** 1.50mm Pitch CLIK-Mate Wire-to-Board PCB Receptacle, Dual Row, Surface Mount, Vertical, 0.10µm Gold (Au) Plating, 10 Circuits, Black

**Series Number :** 213227

**Status :** Active

**Product Category :** PCB Headers and Receptacles



---

## Documents & Resources

### Drawings

[2132271011\\_sd.pdf](#)

### 3D Models and Design Files

[2132271011.dxf](#)

[2132271011.pdf](#)

[2132271011\\_stp.zip](#)

### Specifications

[2132279200-SPK-200.pdf](#)

[5031491002-PS-000.pdf](#)

[5031490002-PS-000.pdf](#)

---

## Product Environment Compliance

### Compliance

|                    |  |
|--------------------|--|
| GADSL/IMDS         | Compliant with Exemption 44; 33                |
| China RoHS         |  |
| EU ELV             | Not Relevant                                   |
| Low-Halogen Status | Not Low-Halogen per IEC 61249-2-21             |
| REACH SVHC         | Not Contained per D(2024)6225-DC (07 Nov 2024) |
| EU RoHS            | Compliant per EU 2015/863                      |

### Multiple Part Product Compliance Statements

- Eu RoHS

- REACH SVHC

- Low-Halogen

Multiple Part Industry Compliance Documents

- IPC 1752A Class C
- IPC 1752A Class D
- Molex Product Compliance Declaration
- IEC-62474
- chemSHERPA (xml)

EU RoHS Certificate of Compliance

---

## Part Details

### General

|                |  |
|----------------|--|
| Status         | Active   |
| Category       | PCB Headers and Receptacles  |
| Series         | 213227   |
| Description    | 1.50mm Pitch CLIK-Mate Wire-to-Board PCB Receptacle, Dual Row, Surface Mount, Vertical, 0.10µm Gold (Au) Plating, 10 Circuits, Black |
| Application    | Signal, Wire-to-Board  |
| Component Type | PCB Receptacle   |
| Product Name   | CLIK-Mate  |
| UPC            | 193264242696   |

### Electrical

|                               |                  |
|-------------------------------|------------------|
| Current - Maximum per Contact | 2.0A             |
| Voltage - Maximum             | 100V AC (RMS)/DC |

### Physical

|                                |       |
|--------------------------------|-------|
| Circuits (Loaded)              | 10    |
| Circuits (maximum)             | 10    |
| Color - Resin                  | Black |
| Durability (mating cycles max) | 30    |
| Glow-Wire Capable              | No    |
| Guide to Mating Part           | Yes   |
| Keying to Mating Part          | Yes   |
| Lock to Mating Part            | Yes   |

|                               |                       |
|-------------------------------|-----------------------|
| Material - Metal              | Copper Alloy          |
| Material - Plating Mating     | Gold                  |
| Material - Resin              | Polyamide             |
| Number of Rows                | 2                     |
| Orientation                   | Vertical              |
| Packaging Type                | Embossed Tape on Reel |
| PCB Locator                   | No                    |
| PCB Retention                 | Yes                   |
| Pitch - Mating Interface      | 1.50mm                |
| Pitch - Termination Interface | 1.50mm                |
| Plating min - Mating          | 0.102µm               |
| Plating min - Termination     | 0.102µm               |
| Polarized to Mating Part      | Yes                   |
| Polarized to PCB              | No                    |
| Stackable                     | No                    |
| Temperature Range - Operating | -40° to +105°C        |
| Termination Interface Style   | Surface Mount         |

---

## Mates With / Use With

### Mates with Part(s)

| Description                                   | Part Number   |
|---|---------------|
| 1.50mm Pitch CLIK-Mate Dual Row Plug Housings | <u>503149</u> |