



Power Double Lock

TE Internal #: 1983660-1

Housing, Plug, Wire-to-Wire, 2 Position, 6.6 mm [.26 in] Centerline, Wire & Cable, UL 94V-0, Power Double Lock, Rectangular Power Connectors

[View on TE.com >](#)

Connectors > Power Connectors > Rectangular Power > Rectangular Power Connectors > Glow Wire Power Double Lock Plug



EU RoHS Compliance: **Compliant**

EU ELV Compliance: **Compliant**

Rectangular Power Connector Type: **Housing**

Connector & Housing Type: **Plug**

Connector System: **Wire-to-Wire**

[All Glow Wire Power Double Lock Plug \(55\)](#)

Features

Other

EU RoHS Compliance	Compliant
EU ELV Compliance	Compliant

Product Type Features

Rectangular Power Connector Type	Housing
Connector & Housing Type	Plug
Connector System	Wire-to-Wire
Sealable	No
Connector & Contact Terminates To	Wire & Cable

Configuration Features

Number of Positions	2
Number of Power Positions	2
Number of Signal Positions	0



Number of Rows	2
----------------	---

Electrical Characteristics

Operating Voltage	300 VAC
-------------------	---------

Contact Features

Contact Mating Area Plating Material	Tin
--------------------------------------	-----

Contact Current Rating (Max)	9 A
------------------------------	-----

Contact Retention Within Housing	Without
----------------------------------	---------

Contact Type	Receptacle
--------------	------------

Contact Mating Area Plating Material Thickness	1 μm [39.37 μin]
--	---

Termination Features

Termination Method to Wire & Cable	Crimp
------------------------------------	-------

Mechanical Attachment

Connector Mounting Type	Cable Mount (Free-Hanging)
-------------------------	----------------------------

Housing Features

Centerline (Pitch)	6.6 mm[.26 in]
--------------------	----------------

Housing Color	Natural
---------------	---------

Housing Material	Thermoplastic
------------------	---------------

Dimensions

Row-to-Row Spacing	6.6 mm[.259 in]
--------------------	-----------------

Usage Conditions

Operating Temperature Range	-30 – 105 °C[-22 – 221 °F]
-----------------------------	----------------------------

Operation/Application

Circuit Application	Power
---------------------	-------

Industry Standards

UL Flammability Rating	UL 94V-0
------------------------	----------

Glow Wire Rating	GWT 750°C (Without Flame)
------------------	---------------------------

Packaging Features

Packaging Quantity	2000
--------------------	------

Packaging Method	Box
------------------	-----

Product Compliance

For compliance documentation, visit the product page on [TE.com](https://www.te.com)>

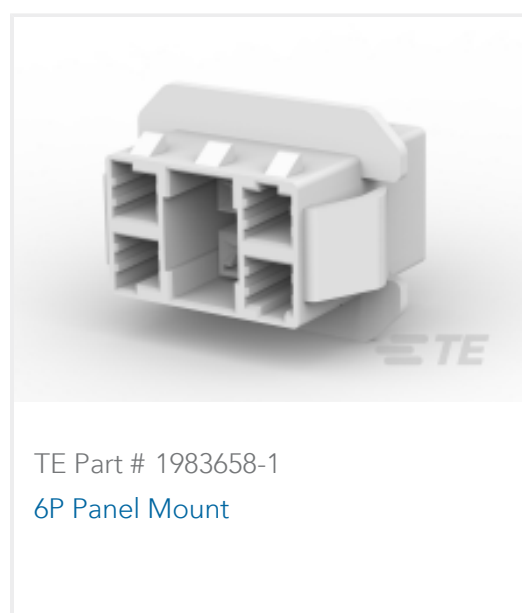


EU RoHS Directive 2011/65/EU	Compliant
EU ELV Directive 2000/53/EC	Compliant
China RoHS 2 Directive MIIT Order No 32, 2016	No Restricted Materials Above Threshold
EU REACH Regulation (EC) No. 1907/2006	Current ECHA Candidate List: JUNE 2024 (241) Candidate List Declared Against: JUNE 2024 (241) Does not contain REACH SVHC
Halogen Content	Not Low Halogen - contains Br or Cl > 900 ppm.
Solder Process Capability	Not reviewed for solder process capability

Product Compliance Disclaimer

This information is provided based on reasonable inquiry of our suppliers and represents our current actual knowledge based on the information they provided. This information is subject to change. The part numbers that TE has identified as EU RoHS compliant have a maximum concentration of 0.1% by weight in homogenous materials for lead, hexavalent chromium, mercury, PBB, PBDE, DBP, BBP, DEHP, DIBP, and 0.01% for cadmium, or qualify for an exemption to these limits as defined in the Annexes of Directive 2011/65/EU (RoHS2). Finished electrical and electronic equipment products will be CE marked as required by Directive 2011/65/EU. Components may not be CE marked. Additionally, the part numbers that TE has identified as EU ELV compliant have a maximum concentration of 0.1% by weight in homogenous materials for lead, hexavalent chromium, and mercury, and 0.01% for cadmium, or qualify for an exemption to these limits as defined in the Annexes of Directive 2000/53/EC (ELV). Regarding the REACH Regulation, the information TE provides on SVHC in articles for this part number is based on the latest European Chemicals Agency (ECHA) 'Guidance on requirements for substances in articles' posted at this URL: <https://echa.europa.eu/guidance-documents/guidance-on-reach>

Compatible Parts



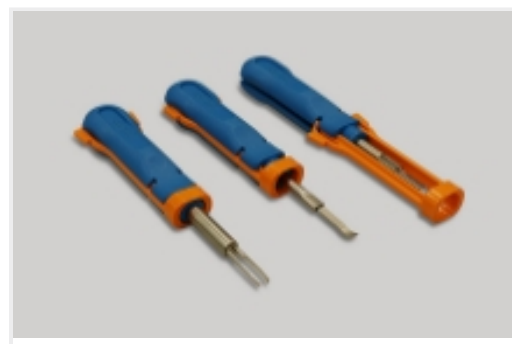
Also in the Series | [Power Double Lock](#)



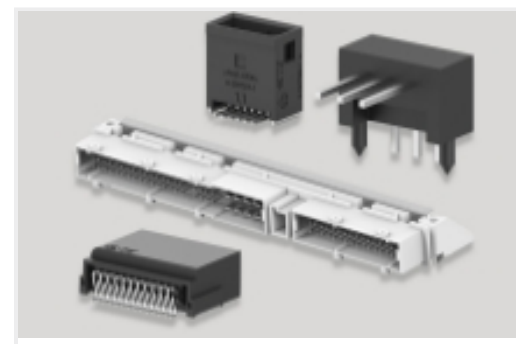
Connector Contacts(24)



Connector Hardware(14)



Insertion & Extraction Tools(2)



PCB Headers & Receptacles(43)



Rectangular Power Connectors(240)

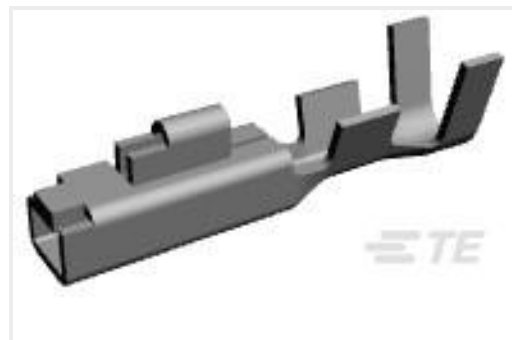
Customers Also Bought



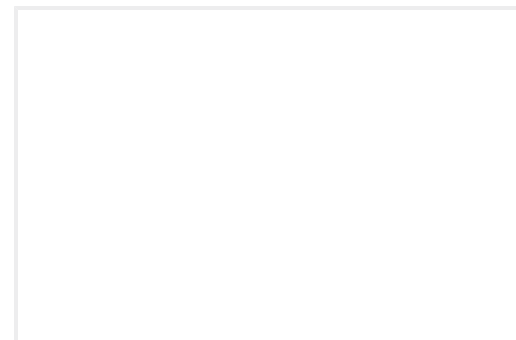
TE Part #2005247-1
PDL 2P PLUG 3.96(GWT) NAT



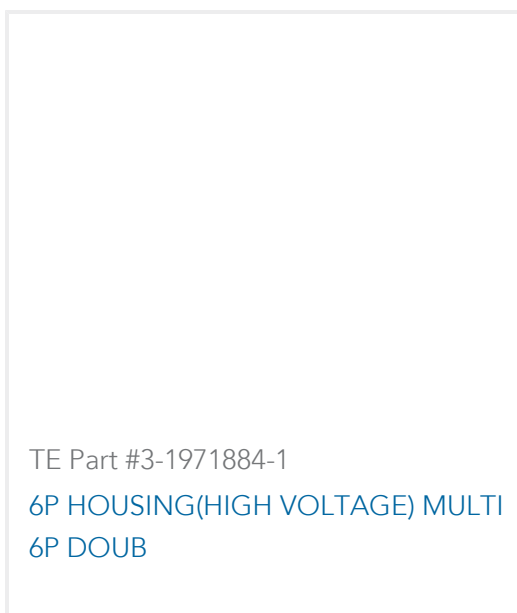
TE Part #350538-3
UMNL PIN 20-14 .0125 PTPPHBZ



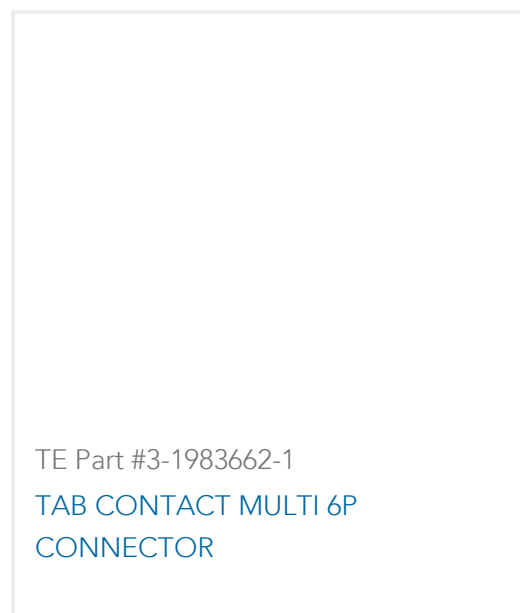
TE Part #175151-2
AMP UNIVE. POWER CONN REC CONT



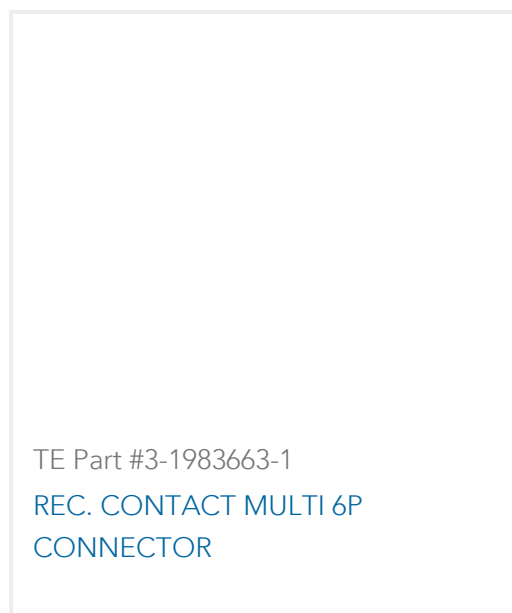
TE Part #3-1971883-1
4P HOUSING(HIGH VOLTAGE) MULTI 6P CONN



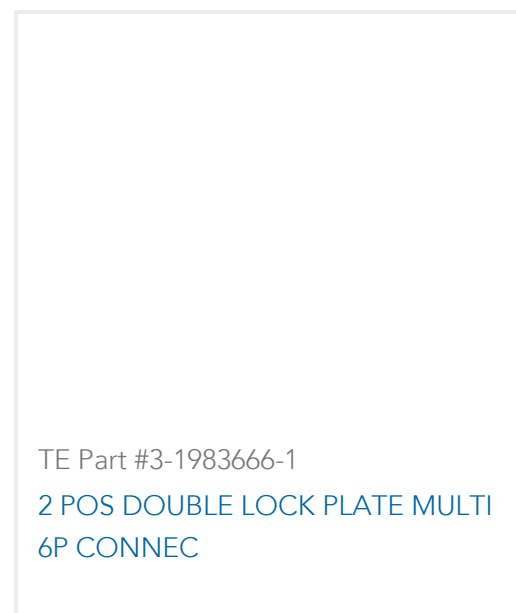
TE Part #3-1971884-1
6P HOUSING(HIGH VOLTAGE) MULTI 6P DOUB



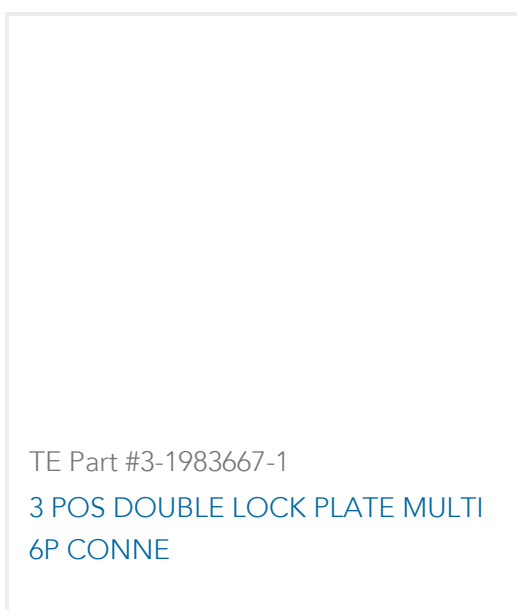
TE Part #3-1983662-1
TAB CONTACT MULTI 6P CONNECTOR



TE Part #3-1983663-1
REC. CONTACT MULTI 6P CONNECTOR



TE Part #3-1983666-1
2 POS DOUBLE LOCK PLATE MULTI 6P CONNEC



TE Part #3-1983667-1
3 POS DOUBLE LOCK PLATE MULTI 6P CONNE

Documents



Product Drawings

2P Plug Housing

English

CAD Files

3D PDF

3D

Customer View Model

[ENG_CVM_CVM_1983660-1_C.2d_dxf.zip](#)

English

Customer View Model

[ENG_CVM_CVM_1983660-1_C.3d_igs.zip](#)

English

Customer View Model

[ENG_CVM_CVM_1983660-1_C.3d_stp.zip](#)

English

By downloading the CAD file I accept and agree to the [Terms and Conditions](#) of use.

Product Specifications

Application Specification

English

Agency Approvals

VDE Certificate

English