

EXTENDED RANGE

- TOOLING FEASIBILITY CONFIRMED
- SAMPLES ON DEMAND
- AVAILABILITY ON DEMAND

PRODUCT DESCRIPTION CODE:
10131935-YXXXLF

PLATING:
(AS AVAILABLE)

- 1 = 0.76 μm GOLD ON CONTACT AREA
2.00 μm MIN MATTE TIN ON TAIL
- 2 = 0.38 μm GOLD ON CONTACT AREA
2.00 μm MIN MATTE TIN ON TAIL
- 3 = 0.20 μm GOLD ON CONTACT AREA
2.00 μm MIN MATTE TIN ON TAIL
- 4 = 0.76 μm GXT ON CONTACT AREA
2.00 μm MIN MATTE TIN ON TAIL
- 5 = 0.38 μm GXT ON CONTACT AREA
2.00 μm MIN MATTE TIN ON TAIL
- 6 = 0.20 μm GXT ON CONTACT AREA
2.00 μm MIN MATTE TIN ON TAIL
- 9 = 2.54 μm MIN MATTE TIN ON CONTACT AREA
2.00 μm MIN MATTE TIN ON TAIL

1.27 μm NICKEL MIN UNDERLAYER

NOTES :

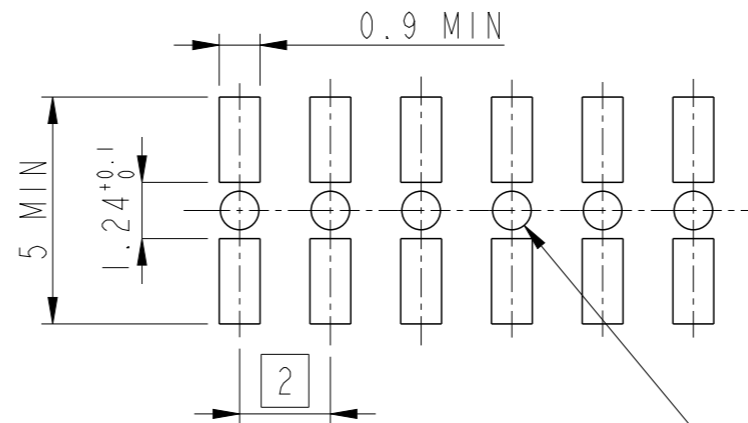
- MATERIAL
HOUSING : HIGH TEMPERATURE GLASS FILLED FLAME RETARDANT PER UL 94 V-0
TERMINAL: COPPER ALLOY
- TO DETERMINE DIMENSIONS :
N = NUMBER OF POSITIONS PER ROW
EXAMPLE : 8 POS N x 2 = 16mm
UP TO N = 12 TOLERANCE : 0
FROM N = 13 TOLERANCE : 0.05
-0.10
-0.10
- RoHS COMPATIBLE PRODUCT SPECIFICATIONS
 - PLATING :
"LF" MEANS THE PRODUCT IS LEAD-FREE, 2 μm MINIMUM MATTE TIN OVER 1.27 μm MINIMUM NICKEL UNDERPLATE
 - MANUFACTURING PROCESS COMPATIBILITY
THE HOUSING WILL WITHSTAND EXPOSURE TO 260 °C PEAK TEMPERATURE FOR 30 SECONDS MAX IN A CONVECTION, INFRA-RED OR VAPOR PHASE OR REFLOW OVEN
 - LABELLING :
MEETS PACKAGING SPECS AS PER GS-14-920
 - LEGAL STATEMENT : SEE GS-47-0004
- THIS PART SERIES IS NOT INITIALLY INTENDED FOR AUTOMOTIVE APPLICATIONS. ADDITIONAL FEES ARE CHARGEABLE FOR ANY ADDITIONAL QUALIFICATION AND TEST REPORTS PERFORMED OUTSIDE THE SCOPE OF THE STANDARD PRODUCT SPECIFICATIONS.
- UNLESS OTHERWISE APPROVED BY AMPHENOL, ALL PARTS AND COMPONENTS ARE DESIGNED & BUILT ACCORDING TO AMPHENOL'S SPECIFICATIONS WHICH ARE SUBJECT TO CHANGE WITHOUT NOTICE.

RoHS COMPATIBLE, SEE NOTE 3

PACKAGING:
(MAY BE SUBJECT TO TOOLING FEES)

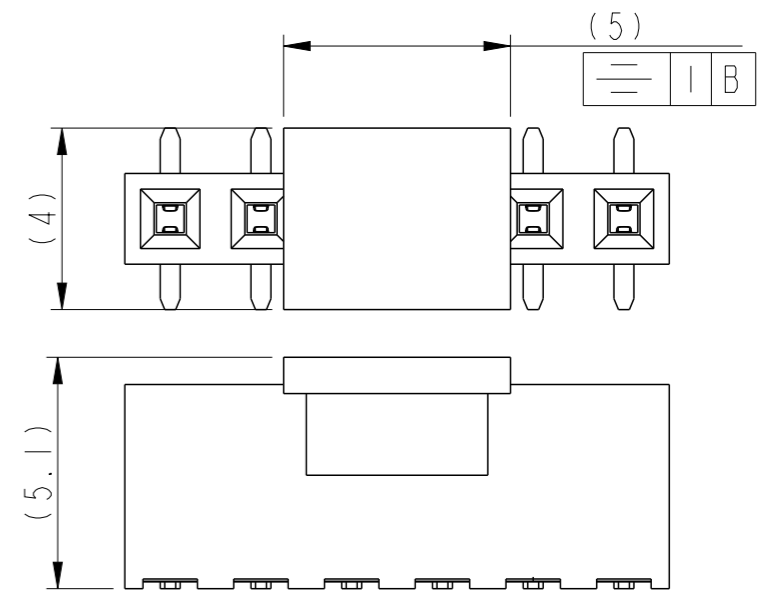
- "A" : TAPE & REEL
- "U" : TUBE
- "B" : TUBE WITH CAP

TOTAL NUMBER OF POSITIONS: 02 TO 25

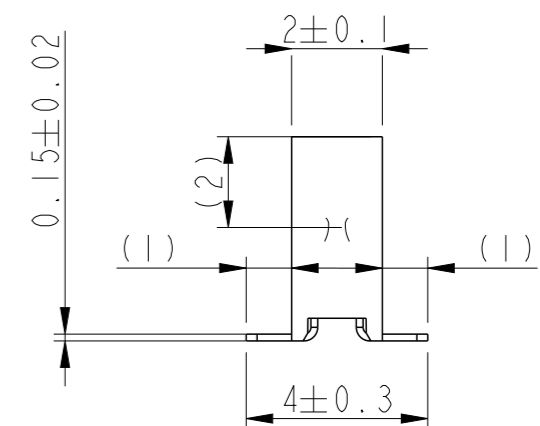
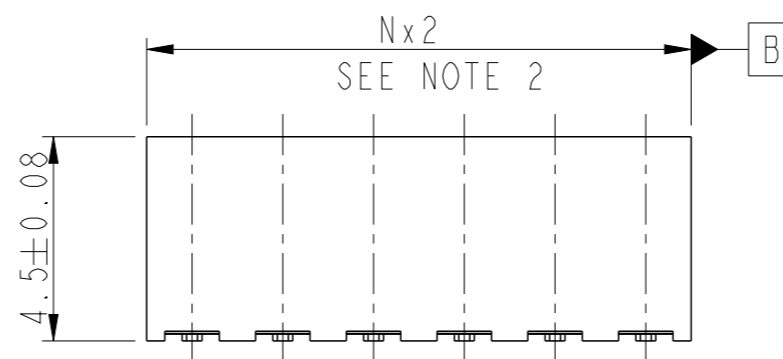
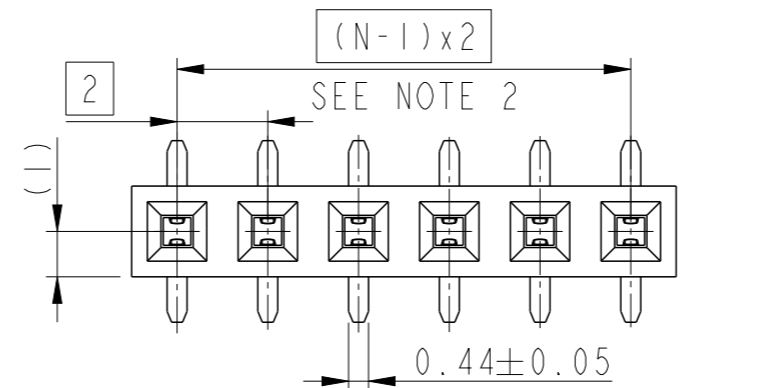


$\varnothing 0.85 \pm 0.05$
FOR BOTTOM ENTRY APPLICATION

RECOMMENDED PAD LAYOUT



WITH PICK-UP CAP



spec ref	-	dr	Cyril Jeune	2014/12/02	projection	mm	size	A3	scale	6:1
tolerance std	ISO 406 ISO 1101	eng	Detouillon, Da	2025/02/05			ecn no	ELX-F-54290-1	rel level	Released
TOLERANCES UNLESS OTHERWISE SPECIFIED		chr	-	apppr						
surface	linear	0.X	±		MINITEK RECEPTACLE 2MM	dwg no	10131935	rev	B	www.fci.com
		0.XX	±							
		0.XXX	±							
	angular	0°	±°	cat. no.	-	Product - Customer Drw	sheet 1 of 1			