



Connectors > Connector Accessories > Connector Hardware



Hardware Accessory Function: **Guide Hardware**

Connector Hardware Accessory Type: **Guide Pin Housing**

Primary Product Material: **Polyester - GF**

Operating Temperature (Max): **125 °C [257 °F]**

Operating Temperature Range: **-55 – 125 °C [-67 – 257 °F]**

Features

Product Type Features

Hardware Accessory Function	Guide Hardware
Connector Hardware Accessory Type	Guide Pin Housing

Body Features

Primary Product Material	Polyester - GF
Primary Product Plating Material	Gold
Product Orientation	Vertical

Usage Conditions

Operating Temperature (Max)	125 °C[257 °F]
Operating Temperature Range	-55 – 125 °C[-67 – 257 °F]

Other

EU RoHS Compliance	Compliant
EU ELV Compliance	Compliant

Packaging Features

Packaging Method	Carton
Packaging Quantity	1000

Product Compliance

[For compliance documentation, visit the product page on TE.com>](#)

EU RoHS Directive 2011/65/EU	Compliant
EU ELV Directive 2000/53/EC	Compliant
China RoHS 2 Directive MIIT Order No 32, 2016	No Restricted Materials Above Threshold
EU REACH Regulation (EC) No. 1907/2006	Current ECHA Candidate List: JUNE 2024 (241) Candidate List Declared Against: JUNE 2024 (241) Does not contain REACH SVHC
Halogen Content	Not Low Halogen - contains Br or Cl > 900 ppm.
Solder Process Capability	Not applicable for solder process capability

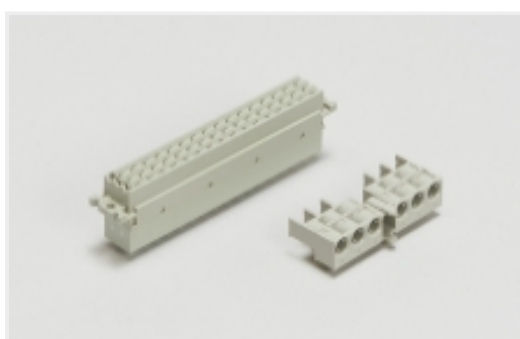
Product Compliance Disclaimer

This information is provided based on reasonable inquiry of our suppliers and represents our current actual knowledge based on the information they provided. This information is subject to change. The part numbers that TE has identified as EU RoHS compliant have a maximum concentration of 0.1% by weight in homogenous materials for lead, hexavalent chromium, mercury, PBB, PBDE, DBP, BBP, DEHP, DIBP, and 0.01% for cadmium, or qualify for an exemption to these limits as defined in the Annexes of Directive 2011/65/EU (RoHS2). Finished electrical and electronic equipment products will be CE marked as required by Directive 2011/65/EU. Components may not be CE marked. Additionally, the part numbers that TE has identified as EU ELV compliant have a maximum concentration of 0.1% by weight in homogenous materials for lead, hexavalent chromium, and mercury, and 0.01% for cadmium, or qualify for an exemption to these limits as defined in the Annexes of Directive 2000/53/EC (ELV). Regarding the REACH Regulation, the information TE provides on SVHC in articles for this part number is based on the latest European Chemicals Agency (ECHA) 'Guidance on requirements for substances in articles' posted at this URL: <https://echa.europa.eu/guidance-documents/guidance-on-reach>

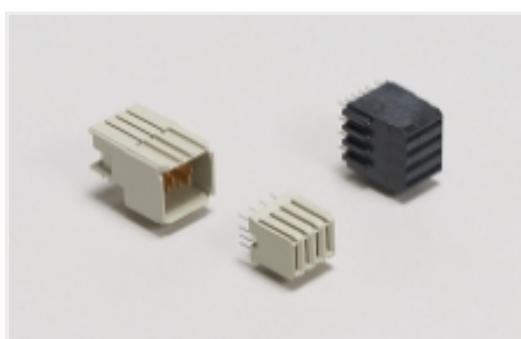
Compatible Parts



Also in the Series | [Z-PACK 2mm HM](#)



Backplane Connector Housings(4)



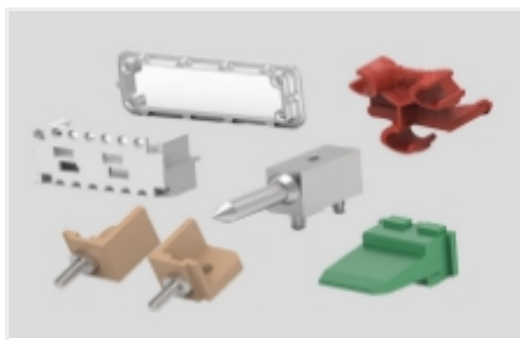
Backplane Power Connectors(1)



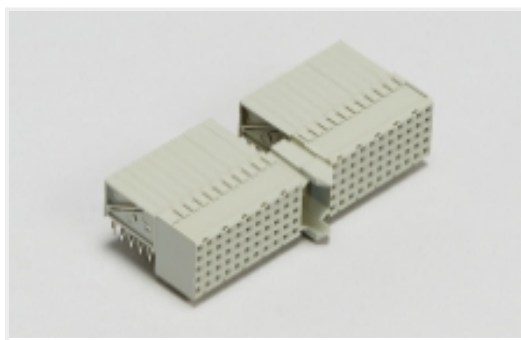
Connector Caps & Covers(62)



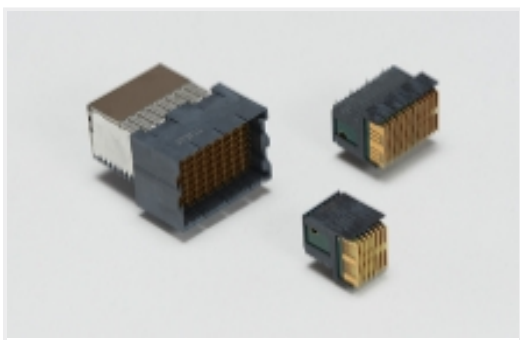
Connector Contacts(2)



Connector Hardware(91)



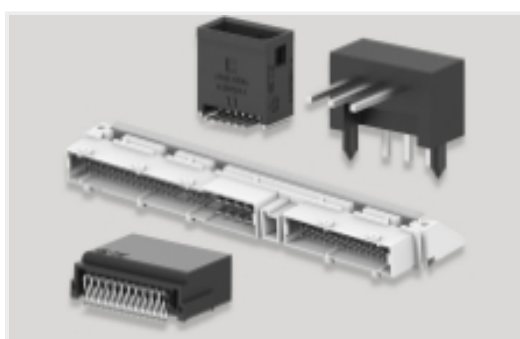
Hard Metric Backplane Connectors (267)



High Speed Backplane Connectors(1)



Insertion & Extraction Tools(2)



PCB Headers & Receptacles(46)

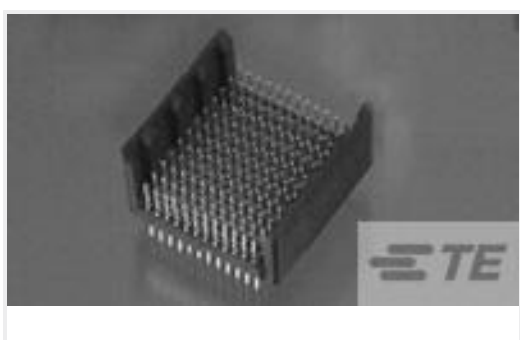
Customers Also Bought



TE Part #DT15-08PB
DEUTSCH DT Headers



TE Part #2-2176070-6
3521 110R 1% 2W



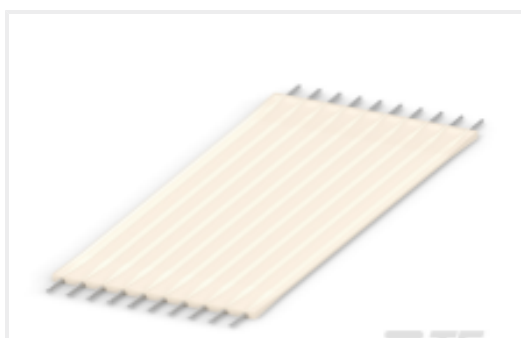
TE Part #5120779-1
2MMHM HDR ASY,12R SEL/LD 144 P



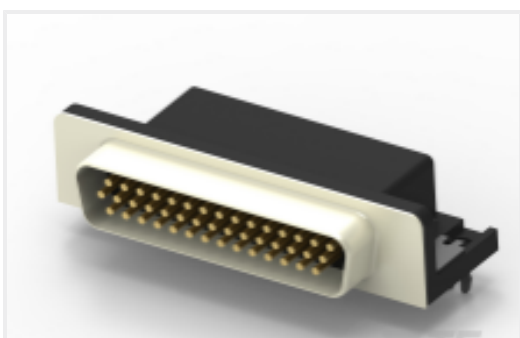
TE Part #5-520314-8
TRIOMATE ASSY H 8P L=2.54 LDFR



TE Part #2176327-2
CRGP 0805 12R 1%



TE Part #6-6437158-0
FSN-21.5A



TE Part #2311777-1
AMPL PLUG, HD22, R/A, 44P,
THREADED

Documents



Product Drawings

2MM HM PIN PWR/GRD MODULE

English

CAD Files

3D PDF

3D

Customer View Model

[ENG_CVM_CVM_646274-1_F.2d_dxf.zip](#)

English

Customer View Model

[ENG_CVM_CVM_646274-1_F.3d_igs.zip](#)

English

Customer View Model

[ENG_CVM_CVM_646274-1_F.3d_stp.zip](#)

English

By downloading the CAD file I accept and agree to the [Terms and Conditions](#) of use.

Product Specifications

Application Specification

English