



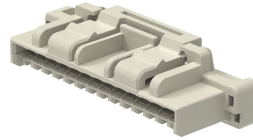
Part Number : [5025781400](#)

Product Description : CLIK-Mate Plug Housing, 1.50mm Pitch, Single Row, Positive Lock, 14 Circuits, Natural

Series Number : 502578

Status : Active

Product Category : Connector Housings



Documents & Resources

Drawings

[5025781400_sd.pdf](#)

3D Models and Design Files

[5025781400.dxf](#)

[5025781400.pdf](#)

[5025781400_stp.zip](#)

Specifications

[AS-502578-001-001.pdf](#)

[AS-503395-001-001.pdf](#)

[SPK-502578-001-001.pdf](#)

[5025780000-PS-000.pdf](#)

[5025780001-PS-000.pdf](#)

[5025780002-PS-000.pdf](#)

[5025780003-PS-000.pdf](#)

[5025781000-PS-000.pdf](#)

[5025781002-PS-000.pdf](#)

[5025781003-PS-000.pdf](#)

[5025781004-PS-000.pdf](#)

[5025780004-PS-000.pdf](#)

Product Environment Compliance

Compliance

GADSL/IMDS	Not Relevant
China RoHS	
EU ELV	Not Relevant
Low-Halogen Status	Not Low-Halogen per IEC 61249-2-21

REACH SVHC	Not Contained per D(2024)6225-DC (07 Nov 2024)
EU RoHS	Compliant per EU 2015/863

Multiple Part Product Compliance Statements

- Eu RoHS
- REACH SVHC
- Low-Halogen

Multiple Part Industry Compliance Documents

- IPC 1752A Class C
- IPC 1752A Class D
- Molex Product Compliance Declaration
- IEC-62474
- chemSHERPA (xml)

EU RoHS Certificate of Compliance

Part Details

General

Status	Active
Category	Connector Housings
Series	502578
Description	CLIK-Mate Plug Housing, 1.50mm Pitch, Single Row, Positive Lock, 14 Circuits, Natural
Application	Signal, Wire-to-Board
Product Name	CLIK-Mate
UPC	800756701127

Agency

UL	E29179
----	--------

Physical

Circuits (maximum)	14
Color - Resin	Natural
Flammability	SC-0
Gender	Plug
Glow-Wire Capable	No
Keying to Mating Part	None

Lock to Mating Part	Yes
Material - Resin	PBT
Net Weight	583.200/mg
Number of Rows	1
Packaging Type	Bag
Panel Mount	No
Pitch - Mating Interface	1.50mm
Pitch - Termination Interface	1.50mm
Polarized to Mating Part	Yes
Stackable	No
Temperature Range - Operating	-40° to +105°C

Mates With / Use With

Mates with Part(s)

Description	Part Number
1.50mm Pitch CLIK-Mate Bottom Entry Single Row PCB Receptacles	<u>503395</u>
1.50mm Pitch CLIK-Mate Right-Angle Single Row PCB Receptacles	<u>213226</u>
1.50mm Pitch CLIK-Mate Right-Angle Single Row PCB Receptacles	<u>502585</u>
1.50mm Pitch CLIK-Mate Right-Angle Single Row PCB Receptacles	<u>503175</u>
1.50mm Pitch CLIK-Mate Vertical Single Row PCB Receptacles	<u>213225</u>
1.50mm Pitch CLIK-Mate Vertical Single Row PCB Receptacles	<u>502584</u>
1.50mm Pitch CLIK-Mate Vertical Single Row PCB Receptacles	<u>503159</u>

Use with Part(s)

Description	Part Number
Pre-Crimped Lead CLIK-Mate 1.50mm Male-to-CLIK-Mate 1.50mm Male, Tin (Sn) Plating, 300.00mm Length, 24 AWG, Black	<u>797581011</u>
1.50mm Pitch CLIK-Mate Male Crimp Terminals	<u>502579</u>

1.50mm Pitch CLIK-Mate Male Crimp Terminals	<u>503429</u>
CLIK-Mate 1.50mm Pitch Male Crimp Terminals	<u>213028</u>
CLIK-Mate 1.50mm Pitch Male Crimp Terminals	<u>213029</u>
Pre-Crimped Lead Clik-Mate Male-to-Clik-Mate Male	<u>215710</u>
Pre-Crimped Lead Clik-Mate Male-to-Pigtail	<u>215711</u>

This document was generated on Dec 24, 2024