

DTM06-08SA-E003 ✓ ACTIVE

DEUTSCH | DEUTSCH DT, DEUTSCH DTM

TE Internal #: 2289630-1

Housing for Female Terminals, Wire-to-Wire, 8 Position, 4.19 mm [.165 in] Centerline, Sealable, Gray, Wire & Cable, Power & Signal, Hybrid

[View on TE.com >](#)



Connectors > Automotive Connectors > Automotive Housings > DEUTSCH DTM Housings



Connector System: **Wire-to-Wire**

Number of Positions: **8**

Connector & Housing Type: **Housing for Female Terminals**

Centerline (Pitch): **4.19 mm [.165 in]**

Sealable: **Yes**

[All DEUTSCH DTM Housings \(113\)](#)

Features

Product Type Features

Connector System	Wire-to-Wire
Connector & Housing Type	Housing for Female Terminals
Sealable	Yes
Connector & Contact Terminates To	Wire & Cable
Primary Locking Feature	Integrated in Housing
Mixed & Hybrid Connector	No
Connector Shape	Rectangular

Configuration Features

Number of Positions	8
Number of Rows	2
Blank Cavity Position	0

Housing Features



Centerline (Pitch)	4.19 mm [.165 in]
--------------------	-------------------

Housing Material	PA GF
------------------	-------

Contact Features

Mating Pin Diameter	1.02 mm [.04 in]
---------------------	------------------

Contact Current Rating (Max)	7.5 A
------------------------------	-------

Contact Size	Size 20
--------------	---------

Contact Type	Socket
--------------	--------

Body Features

Primary Product Color	Gray
-----------------------	------

Connector & Keying Code	A
-------------------------	---

Cable Exit Angle	180°
------------------	------

Operation/Application

Circuit Application	Power & Signal
---------------------	----------------

Mechanical Attachment

Connector Mounting Type	Cable Mount (Free-Hanging)
-------------------------	----------------------------

Strain Relief	Add By Accessory
---------------	------------------

Terminal Position Assurance	Yes
-----------------------------	-----

Mating Alignment Type	Keyed
-----------------------	-------

Mating Alignment	With
------------------	------

Usage Conditions

Operating Temperature (Max)	125 °C [257 °F]
-----------------------------	-----------------

Operating Temperature Range	-55 – 125 °C [-67 – 257 °F]
-----------------------------	-----------------------------

Electrical Characteristics

Nominal Voltage Architecture	24 V, 12 V, 48 V
------------------------------	------------------

Operating Voltage	250 VDC
-------------------	---------

Other

Connector Position Assurance Capable	No
--------------------------------------	----

EU RoHS Compliance	Compliant
--------------------	-----------

EU ELV Compliance	Compliant
-------------------	-----------

Serviceable	Yes
-------------	-----

Dimensions

Row-to-Row Spacing	7.11 mm [.28 in]
--------------------	------------------



Compatible Insulation Diameter Range	1.35 – 3.05 mm [.053 – .12 in]
Product Width	16.51 mm [.65 in]
Product Length	31.62 mm [1.245 in]
Connector Height	31.62 mm [1.245 in]

Industry Standards

IP Rating	IP6K9K, IP68
Compatible With Agency/Standards Products	SAE J2030
UL Flammability Rating	20mm Flame Test per Standard UL-94

Packaging Features

Packaging Quantity	900
Packaging Method	Box

Product Compliance

[For compliance documentation, visit the product page on TE.com>](#)

EU RoHS Directive 2011/65/EU	Compliant
EU ELV Directive 2000/53/EC	Compliant
China RoHS 2 Directive MIIT Order No 32, 2016	No Restricted Materials Above Threshold
EU REACH Regulation (EC) No. 1907/2006	Current ECHA Candidate List: JUNE 2024 (241) Candidate List Declared Against: JUNE 2024 (241) SVHC > Threshold: Octamethylcyclotetrasiloxane (D4) (.5% in Component Part) Dodecamethylcyclohexasiloxane (D6) (.5% in Component Part) Decamethylcyclopentasiloxane (D5) (.5% in Component Part) Article Safe Usage Statements: Wash thoroughly after handling. Recycle if possible and dispose of the article by following all applicable governmental regulations relevant to your geographic location.
Halogen Content	Not Low Halogen - contains Br or Cl > 900 ppm.
Solder Process Capability	Not applicable for solder process capability

Product Compliance Disclaimer

This information is provided based on reasonable inquiry of our suppliers and represents our current actual knowledge based on the information they provided. This information is subject to change. The part numbers that TE has identified as EU RoHS compliant have a maximum concentration of 0.1% by weight in homogenous materials for lead, hexavalent chromium, mercury, PBB, PBDE, DBP, BBP, DEHP, DIBP, and 0.01% for cadmium, or qualify for an exemption to these limits as defined in the Annexes of Directive 2011/65/EU (RoHS2). Finished electrical and electronic equipment products

will be CE marked as required by Directive 2011/65/EU. Components may not be CE marked. Additionally, the part numbers that TE has identified as EU ELV compliant have a maximum concentration of 0.1% by weight in homogenous materials for lead, hexavalent chromium, and mercury, and 0.01% for cadmium, or qualify for an exemption to these limits as defined in the Annexes of Directive 2000/53/EC (ELV). Regarding the REACH Regulation, the information TE provides on SVHC in articles for this part number is based on the latest European Chemicals Agency (ECHA) 'Guidance on requirements for substances in articles' posted at this URL: <https://echa.europa.eu/guidance-documents/guidance-on-reach>

Compatible Parts

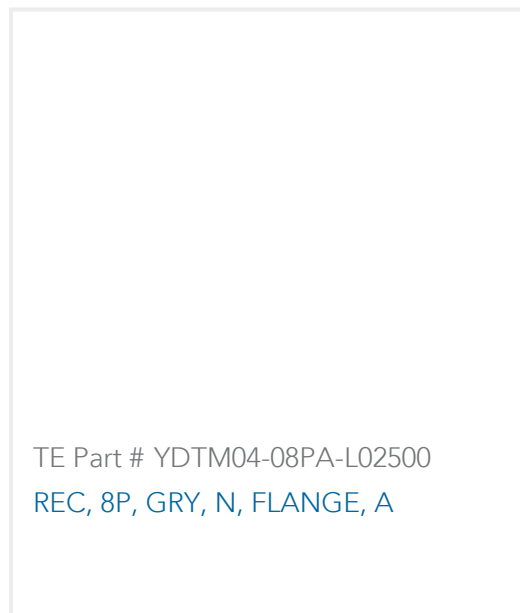




TE Part # 1062-20-0677
SOC, SF, SIZE 20, 14-16, SN/SN



TE Part # DTM04-08PA-C017
REC, 8P, GRY, BLOCKED, A

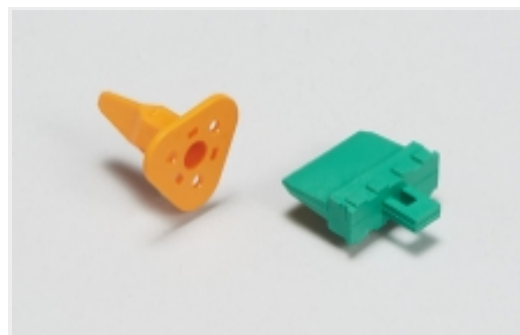


TE Part # YDTM04-08PA-L02500
REC, 8P, GRY, N, FLANGE, A

Also in the Series | DEUTSCH DT



Automotive Connector Caps & Covers
(19)



Automotive Connector Locks &
Position Assurance(90)



Automotive Housings(737)



Connector Backshells(67)



Connector Caps & Covers(1)



Connector Seals & Cavity Plugs(18)



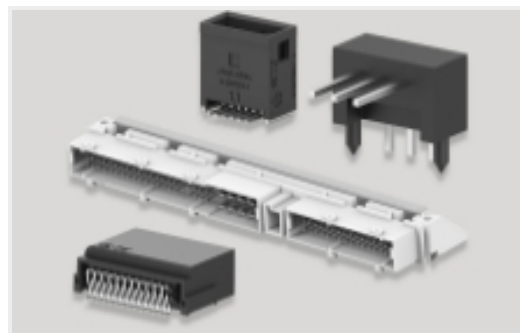
Connector Strain Relief(31)



Insertion & Extraction Tools(3)



Other Automotive Connector
Accessories(28)



PCB Headers & Receptacles(107)

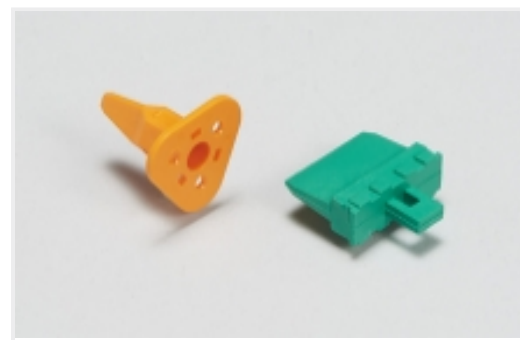


Rectangular Connector Housings(1)

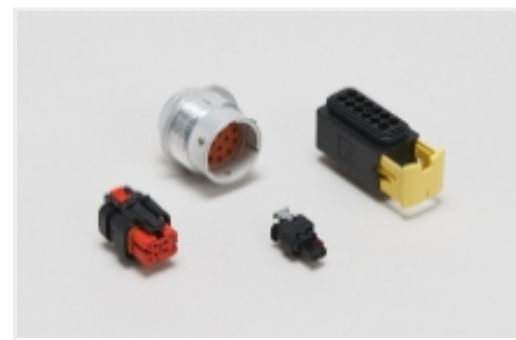
Also in the Series | DEUTSCH DTM



Automotive Connector Caps & Covers (7)



Automotive Connector Locks & Position Assurance (26)



Automotive Housings (109)



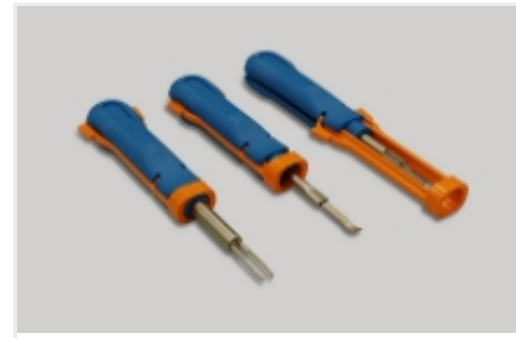
Connector Backshells (7)



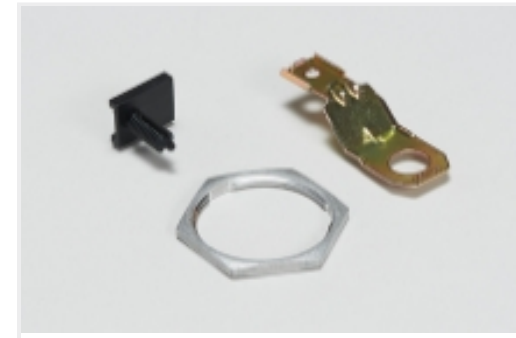
Connector Seals & Cavity Plugs (1)



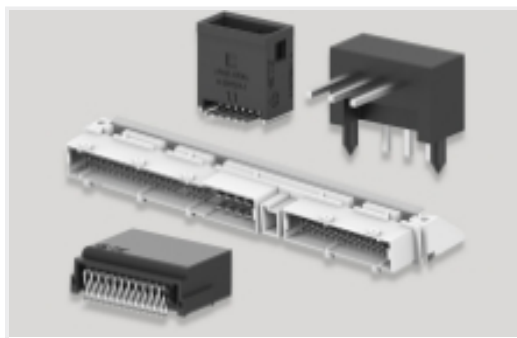
Connector Strain Relief (28)



Insertion & Extraction Tools (2)



Other Automotive Connector Accessories (7)



PCB Headers & Receptacles (38)

Customers Also Bought



TE Part #DT04-2P
REC, 2P, GRY, N



TE Part #W2S
Wedglocks: DEUTSCH DT



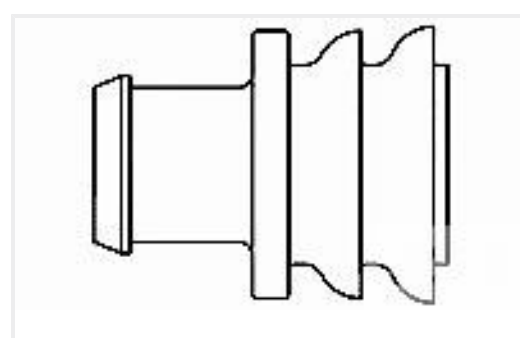
TE Part #0460-202-16141
DEUTSCH Solid Contacts



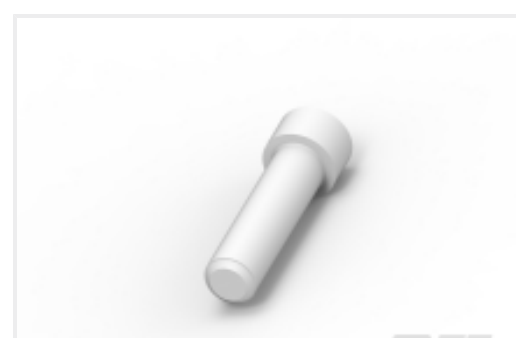
TE Part #282104-1
AMP SUPERSEAL 1.5MM,
CONNECTOR HOUSING



TE Part #DT06-2S
PLG, 2P, GRY, N



TE Part #281934-2
SINGLE WIRE SEAL



TE Part #114017-ZZ
SEALING PLUG, SIZE 12/16, WHT

Documents



Product Drawings

[DTM06-08SA-E003, PLG, 8P, GRY, N, CAP, A](#)

English

CAD Files

Customer View Model

[ENG_CVM_CVM_2289630-1_A.3d_stp.zip](#)

English

Customer View Model

[ENG_CVM_CVM_2289630-1_A.3d_igs.zip](#)

English

[3D PDF](#)

3D

Customer View Model

[ENG_CVM_CVM_2289630-1_A.2d_dxf.zip](#)

English

By downloading the CAD file I accept and agree to the [Terms and Conditions](#) of use.

Product Specifications

[Application Specification](#)

English

Agency Approvals

[UL Report](#)

English