

2-1241965-7 ✓ ACTIVE

RAST | RAST 5 IDC Connectors

TE Internal #: 2-1241965-7

Housing, Plug, Wire-to-Board, 7 Position, 5 mm [.197 in] Centerline,
Crimp, 1 Row, Natural, Mating Retention, Wire & Cable, RAST 5
IDC Connectors

[View on TE.com >](#)



Connectors > PCB Connectors > Wire-to-Board Connectors > Wire-to-Board Connector Assemblies & Housings



Connector Product Type: **Housing**

Connector & Housing Type: **Plug**

Connector System: **Wire-to-Board**

Number of Positions: **7**

Centerline (Pitch): **5 mm [.197 in]**

Features

Product Type Features

Connector Product Type	Housing
Connector & Housing Type	Plug
Connector System	Wire-to-Board
Sealable	No
Connector & Contact Terminates To	Wire & Cable

Configuration Features

Number of Positions	7
Number of Rows	1
Keying & Polarized Rib Location	2b

Housing Features

Centerline (Pitch)	5 mm [.197 in]
Housing Material	PA 6
Housing Entry Configuration	Both Ends Closed

Termination Features



Termination Method to Wire & Cable	Crimp
------------------------------------	-------

Body Features

Primary Product Color	Natural
-----------------------	---------

Mechanical Attachment

Mating Retention	With
------------------	------

Connector Mounting Type	Cable Mount (Free-Hanging)
-------------------------	----------------------------

Strain Relief	Without
---------------	---------

Locking Latch Between Cavity Number	1&2, 6&7
-------------------------------------	----------

Panel Mount Feature	Without
---------------------	---------

Mating Retention Type	Latch
-----------------------	-------

PCB Mount Retention	Without
---------------------	---------

Operation/Application

Circuit Application	Power & Signal
---------------------	----------------

Usage Conditions

Operating Temperature Range	-40 – 105 °C[-40 – 221 °F]
-----------------------------	----------------------------

Other

EU RoHS Compliance	Compliant
--------------------	-----------

EU ELV Compliance	Compliant
-------------------	-----------

Dimensions

Connector Height	13.9 mm[.547 in]
------------------	------------------

Connector Length	25.5 mm[1 in]
------------------	---------------

Industry Standards

RAST Version	07-C
--------------	------

UL Flammability Rating	UL 94V-2
------------------------	----------

Glow Wire Rating	Glow Wire
------------------	-----------

Packaging Features

Packaging Method	Bag
------------------	-----

Packaging Quantity	1500
--------------------	------

Product Compliance

[For compliance documentation, visit the product page on TE.com>](#)



EU RoHS Directive 2011/65/EU	Compliant
EU ELV Directive 2000/53/EC	Compliant
China RoHS 2 Directive MIIT Order No 32, 2016	No Restricted Materials Above Threshold
EU REACH Regulation (EC) No. 1907/2006	Current ECHA Candidate List: JUNE 2024 (241) Candidate List Declared Against: JUNE 2024 (241) Does not contain REACH SVHC
Halogen Content	Not Low Halogen - contains Br or Cl > 900 ppm.
Solder Process Capability	Not reviewed for solder process capability

Product Compliance Disclaimer

This information is provided based on reasonable inquiry of our suppliers and represents our current actual knowledge based on the information they provided. This information is subject to change. The part numbers that TE has identified as EU RoHS compliant have a maximum concentration of 0.1% by weight in homogenous materials for lead, hexavalent chromium, mercury, PBB, PBDE, DBP, BBP, DEHP, DIBP, and 0.01% for cadmium, or qualify for an exemption to these limits as defined in the Annexes of Directive 2011/65/EU (RoHS2). Finished electrical and electronic equipment products will be CE marked as required by Directive 2011/65/EU. Components may not be CE marked. Additionally, the part numbers that TE has identified as EU ELV compliant have a maximum concentration of 0.1% by weight in homogenous materials for lead, hexavalent chromium, and mercury, and 0.01% for cadmium, or qualify for an exemption to these limits as defined in the Annexes of Directive 2000/53/EC (ELV). Regarding the REACH Regulation, the information TE provides on SVHC in articles for this part number is based on the latest European Chemicals Agency (ECHA) 'Guidance on requirements for substances in articles' posted at this URL: <https://echa.europa.eu/guidance-documents/guidance-on-reach>

Compatible Parts



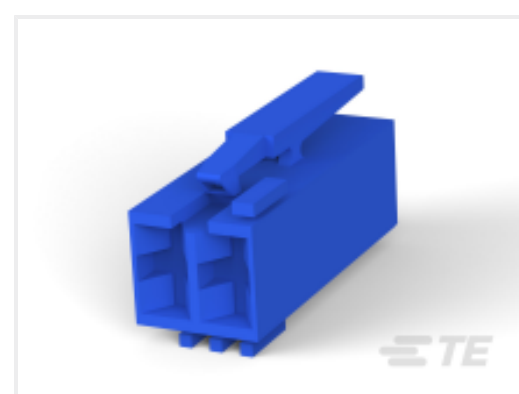
TE Part # 2-1241959-4
STD TIM HOUSING MKII 4POS



TE Part # 2315717-1
STD TIMER PLUG HSG 2P MKII



TE Part # 4-1241965-2
STD TIMER HOUSING



TE Part # 5-1241983-3
STANDARD TIMER HOUSING MARK II



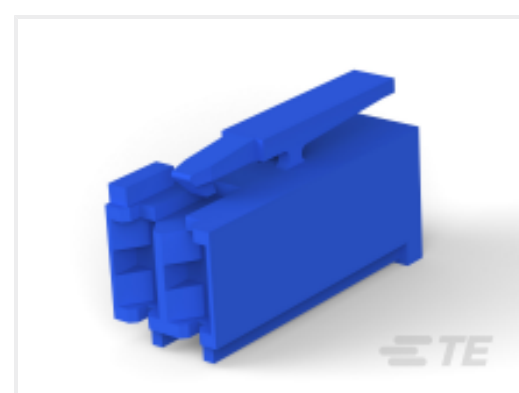
TE Part # 1241965-4
STANDARD TIMER HSG. WITH EXT. LOCK.



TE Part # 1241959-4
STD-TIM HSG MKII 4P



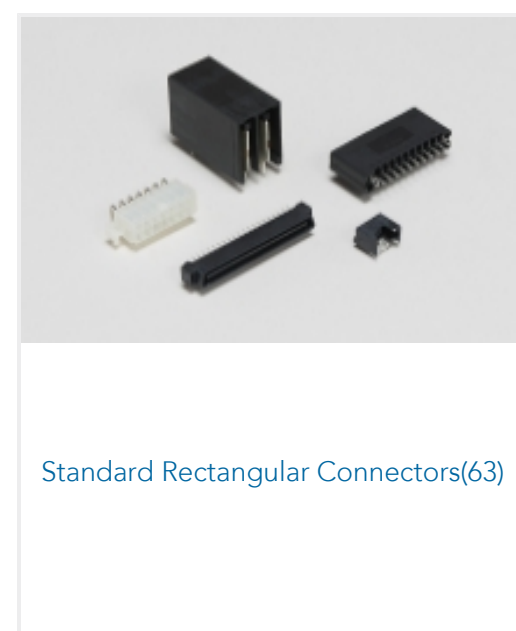
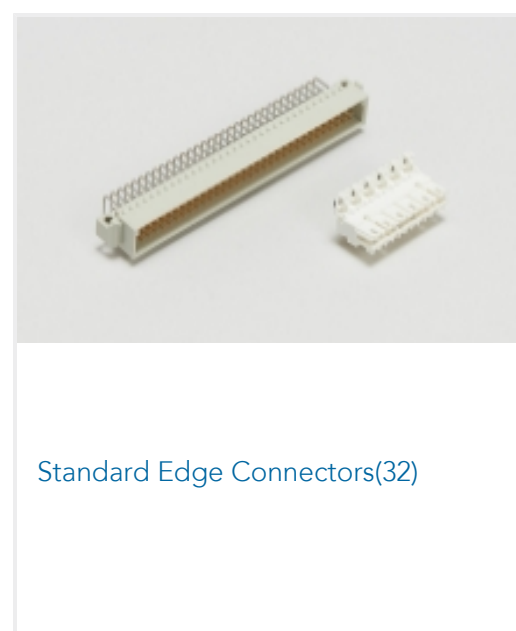
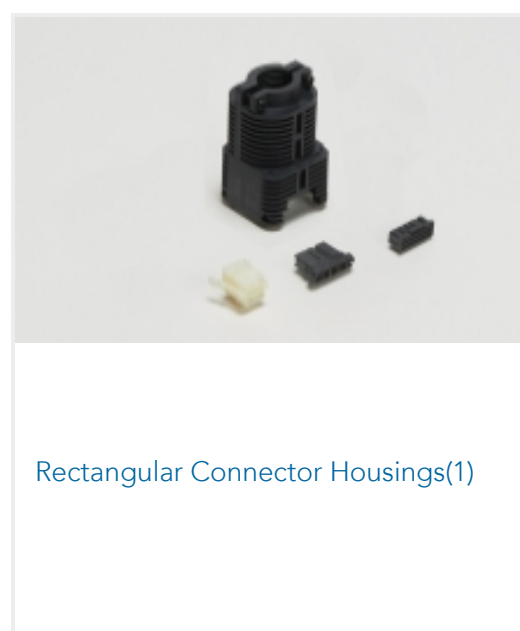
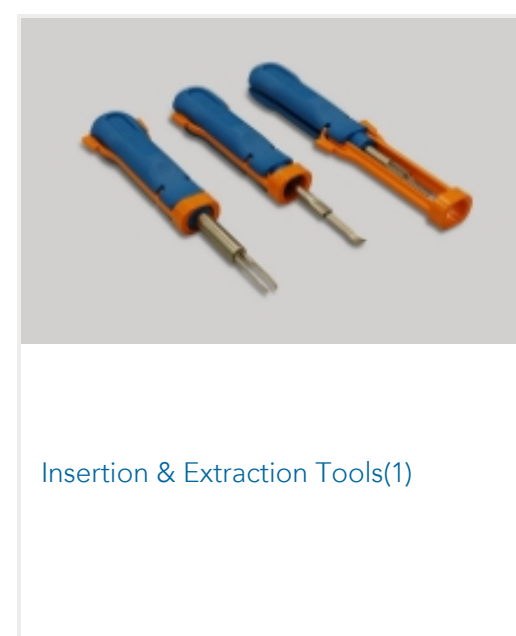
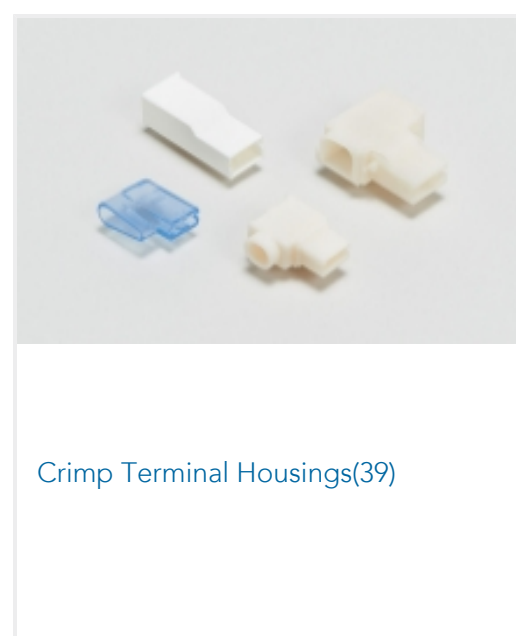
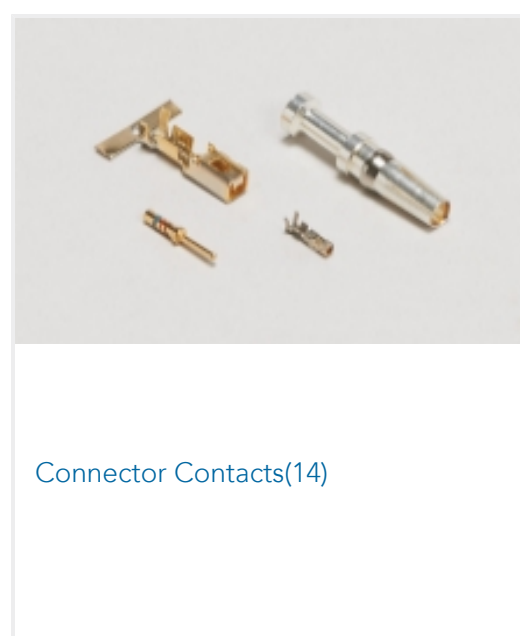
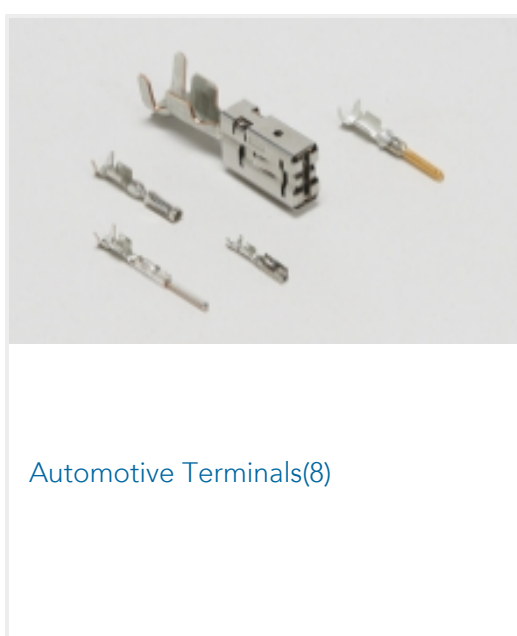
TE Part # 6-1241983-2
STANDARD TIMER HOUSING MARK II

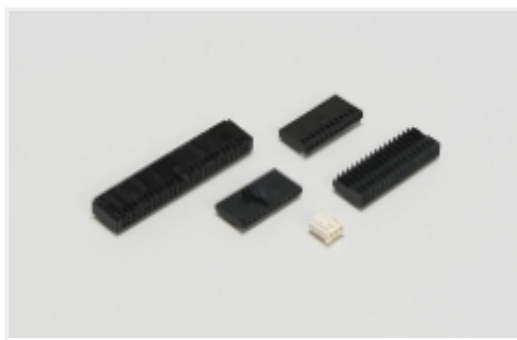


TE Part # 3-1241965-2
STD TIMER HOUSING



Also in the Series | **RAST 5 IDC Connectors**





Wire-to-Board Connector Assemblies & Housings(203)

Customers Also Bought



TE Part #794273-1
04P UMNL INTERFACE SEAL



TE Part #5-160558-1
FF 250 REC 0.5-1.5MM2 BR



TE Part #1744416-8
8 POS EP II HSG, GLOW WIRE



TE Part #1-350866-1
01P UMNL CAP HSG



TE Part #1-1703061-2
PLUG, 2 CIRCUIT , UNIVERSAL MATE-N-LOK



TE Part #926884-3
UNIV.M-M-L.SOCKET



TE Part #140523
RT .171 DIA TERMINAL 20-16 AWG BR



TE Part #2178561-2
STD-TIM GEH 2P_V0-GWT

Documents

Product Drawings

7P ST-TIMER GEH

English

CAD Files

3D PDF

3D

Customer View Model

[ENG_CVM_CVM_2-1241965-7_A.2d_dxf.zip](#)

English

Customer View Model

[ENG_CVM_CVM_2-1241965-7_A.3d_igs.zip](#)

English

Customer View Model

[ENG_CVM_CVM_2-1241965-7_A.3d_stp.zip](#)

English

By downloading the CAD file I accept and agree to the [Terms and Conditions](#) of use.



Datasheets & Catalog Pages

[RAST Connector System Catalog](#)

English

Product Specifications

[Product Specification](#)

German

Agency Approvals

[VDE Certificate](#)

English