



Product Compliance

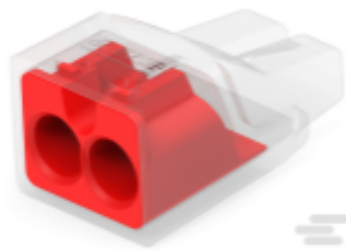
[For compliance documentation, visit the product page on TE.com>](#)

EU RoHS Directive 2011/65/EU	Compliant
EU ELV Directive 2000/53/EC	Compliant
China RoHS 2 Directive MIIT Order No 32, 2016	No Restricted Materials Above Threshold
EU REACH Regulation (EC) No. 1907/2006	Current ECHA Candidate List: JUNE 2024 (241) Candidate List Declared Against: JUNE 2024 (241) Does not contain REACH SVHC
Halogen Content	Low Halogen - Br, Cl, F, I < 900 ppm per homogenous material. Also BFR/CFR/PVC Free
Solder Process Capability	Not reviewed for solder process capability

Product Compliance Disclaimer

This information is provided based on reasonable inquiry of our suppliers and represents our current actual knowledge based on the information they provided. This information is subject to change. The part numbers that TE has identified as EU RoHS compliant have a maximum concentration of 0.1% by weight in homogenous materials for lead, hexavalent chromium, mercury, PBB, PBDE, DBP, BBP, DEHP, DIBP, and 0.01% for cadmium, or qualify for an exemption to these limits as defined in the Annexes of Directive 2011/65/EU (RoHS2). Finished electrical and electronic equipment products will be CE marked as required by Directive 2011/65/EU. Components may not be CE marked. Additionally, the part numbers that TE has identified as EU ELV compliant have a maximum concentration of 0.1% by weight in homogenous materials for lead, hexavalent chromium, and mercury, and 0.01% for cadmium, or qualify for an exemption to these limits as defined in the Annexes of Directive 2000/53/EC (ELV). Regarding the REACH Regulation, the information TE provides on SVHC in articles for this part number is based on the latest European Chemicals Agency (ECHA) 'Guidance on requirements for substances in articles' posted at this URL: <https://echa.europa.eu/guidance-documents/guidance-on-reach>

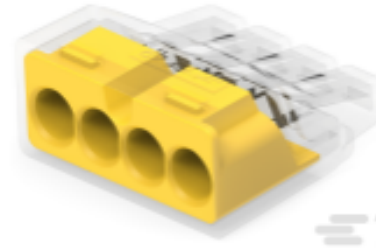
Compatible Parts



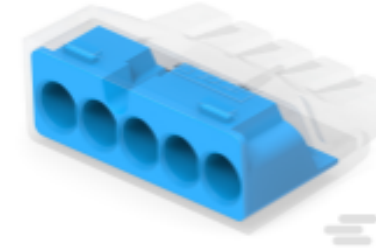
TE Part # 2388553-2
PUSH-IN CONNECTOR, 2 POS



TE Part # 2388553-3
PUSH-IN CONNECTOR, 3 POS

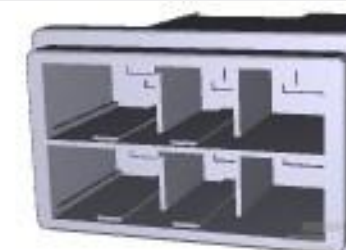


TE Part # 2388553-4
PUSH-IN CONNECTOR, 4 POS



TE Part # 2388553-5
PUSH-IN CONNECTOR, 5 POS

Customers Also Bought



TE Part #1-917808-3
DYNAMIC D-5200M TAB HSG 6P X-X



TE Part #917803-3
DYNAMIC D-5 TAB CONT. M AU



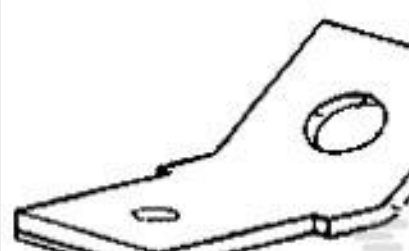
TE Part #770022-1
12P UMNLI IN-LNE PLUG HSG KIT



TE Part #CR2103-000
CPGI-WC-WG-OR-BULK



TE Part #770029-1
12P UMNLI IN-LINE CAP HSG KIT



TE Part #61499-1
250 FASTON TAB TPBR



TE Part #CR2105-000
CPGI-WC-WG-YW-BULK



TE Part #964203-1
STD PW TIMER CONTACT



TE Part #CR2102-000
CPGI-WC-WG-GR-BULK



TE Part #2408840-5
Socket Contact of HCI 6.2mm Pitch

Documents

Product Drawings

[WINGGRIP WC, BLUE, 22-14 AWG](#)

English

Datasheets & Catalog Pages

[Twist Splice Wire Connectors flyer](#)

English

[Twist Splice wire connectors](#)



[Instruction Sheets](#)

[Instruction Sheet \(U.S.\)](#)

English