

53411-1 ✓ ACTIVE

PIDG

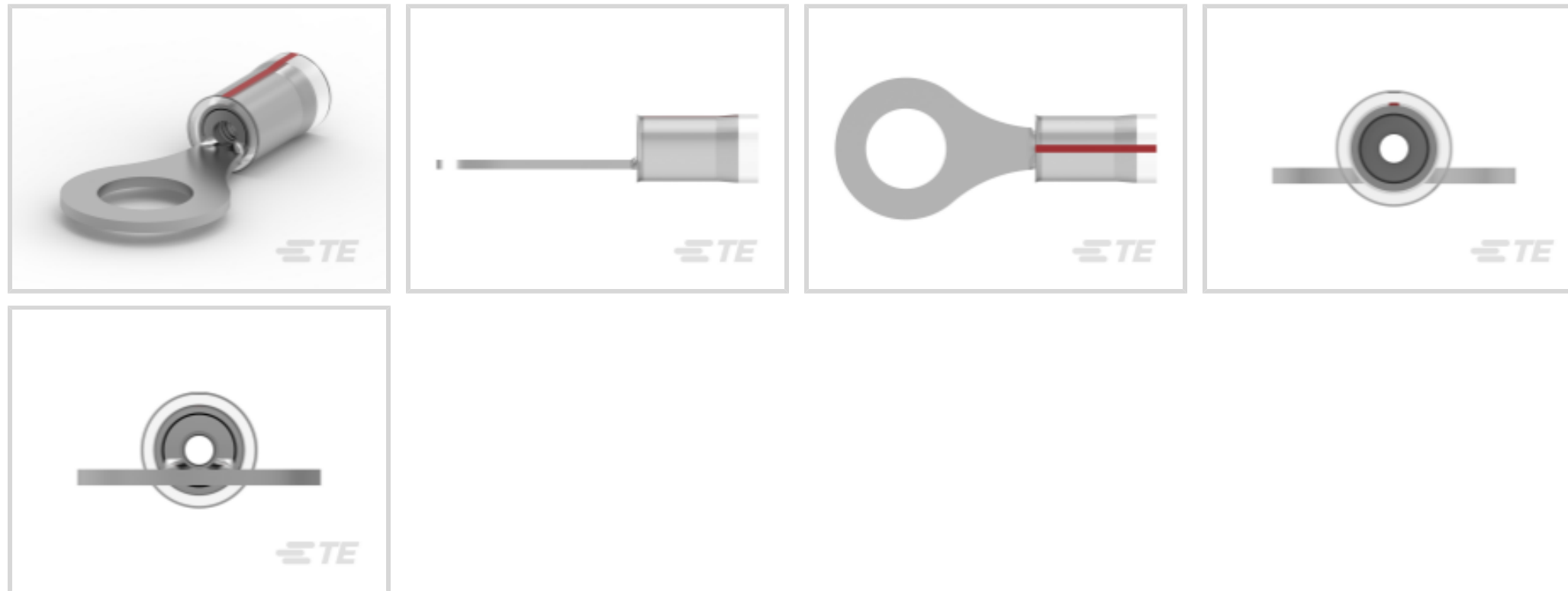
TE Internal #: 53411-1

Closed Ring Tongue Terminal, 22 AWG, 5/16 / M8 Stud Size, 8.33 mm [.328 in] Stud Diameter, Closed Barrel, Straight, Tin-Lead, PIDG

[View on TE.com >](#)



Terminals & Splices > Ring Terminals > PIDG Radiation Resistant C Rings/Spades



Ring Terminal Product Type: **Closed Ring Tongue Terminal**

Wire Size: **509 – 3260 CMA**

Stud Size: **M8, 5/16**

[All PIDG Radiation Resistant C Rings/Spades \(36\)](#)

## Features

### Product Type Features

Ring Terminal Product Type	Closed Ring Tongue Terminal
Stud Size	M8, 5/16
Sealable	No
Wire Insulation Support Retention Type	Insulation Support

### Dimensions

Wire Size	509 – 3260 CMA
Stud Diameter	8.33 mm [.328 in]
Tongue Thickness	.79 mm [.031 in]
Product Length	27.38 mm [1.078 in]
Compatible Insulation Diameter (Max)	3.18 mm [.125 in]
Compatible Insulation Diameter Range	2.03 – 3.18 mm [.08 – .125 in]

### Contact Features

Barrel Type	Closed
Terminal Orientation	Straight
Terminal Plating Material	Tin-Lead

Military Part Class	Class I
---------------------	---------

### Usage Conditions

Insulation Option	Partially Insulated
Operating Temperature Range	150 °C[302 °F]

### Operation/Application

Compatible With Wire Base Material	Copper
Compatible With Wire Plating Material	Tin

### Packaging Features

Packaging Method	Loose Piece
Packaging Quantity	1000

### Other

EU RoHS Compliance	Not Compliant
EU ELV Compliance	Compliant with Exemptions

### Configuration Features

Number of Holes	1
-----------------	---

### Body Features

Insulation Sleeve Color	Natural
Stripe Color	Red

### Mechanical Attachment

Wire Insulation Support	With
-------------------------	------

### Industry Standards

Government Qualified Terminal	Yes
-------------------------------	-----

## Product Compliance

[For compliance documentation, visit the product page on TE.com>](#)

EU RoHS Directive 2011/65/EU	Not Compliant
EU ELV Directive 2000/53/EC	Compliant with Exemptions
China RoHS 2 Directive MIIT Order No 32, 2016	Restricted Materials Above Threshold
EU REACH Regulation (EC) No. 1907/2006	Current ECHA Candidate List: JUNE 2024 (241) Candidate List Declared Against: JUNE 2024 (241) SVHC > Threshold:

Pb (13% in Component Part)

Article Safe Usage Statements:

Do not eat, drink or smoke when using this product. Wash thoroughly after handling. Recycle if possible and dispose of the article by following all applicable governmental regulations relevant to your geographic location.

Halogen Content

Not Low Halogen - contains Br or Cl > 900 ppm.

Solder Process Capability

Not applicable for solder process capability

Product Compliance Disclaimer

This information is provided based on reasonable inquiry of our suppliers and represents our current actual knowledge based on the information they provided. This information is subject to change. The part numbers that TE has identified as EU RoHS compliant have a maximum concentration of 0.1% by weight in homogenous materials for lead, hexavalent chromium, mercury, PBB, PBDE, DBP, BBP, DEHP, DIBP, and 0.01% for cadmium, or qualify for an exemption to these limits as defined in the Annexes of Directive 2011/65/EU (RoHS2). Finished electrical and electronic equipment products will be CE marked as required by Directive 2011/65/EU. Components may not be CE marked. Additionally, the part numbers that TE has identified as EU ELV compliant have a maximum concentration of 0.1% by weight in homogenous materials for lead, hexavalent chromium, and mercury, and 0.01% for cadmium, or qualify for an exemption to these limits as defined in the Annexes of Directive 2000/53/EC (ELV). Regarding the REACH Regulation, the information TE provides on SVHC in articles for this part number is based on the latest European Chemicals Agency (ECHA) 'Guidance on requirements for substances in articles' posted at this URL: <https://echa.europa.eu/guidance-documents/guidance-on-reach>

## Compatible Parts

REPRESENTATION ONLY

TE Part # 47386-4  
DAHT PG PIDG 26-16 ASSY

TE Part # 59250  
T-HEAD PIDG 26-14 ASSY

TE Part # 59824-1  
TETRA-CRIMP PIDG PG FASTON 22-10 ASSY

REPRESENTATION ONLY

TE Part # 47386  
DAHT PG PIDG 26-16 ASSY

TE Part # 58433-3  
PRO CR ASSY, RBY IS9252

REPRESENTATION ONLY

TE Part # 525690  
DAHT PG PIDG 20-18 ASSY

TE Part # 539691-2  
ERGO DIE R.B.Y

TE Part # 58423-1  
DIE, RBY IS9252

TE Part # 132246-3  
TERMINAL RING TONGUE PIDG 22 18

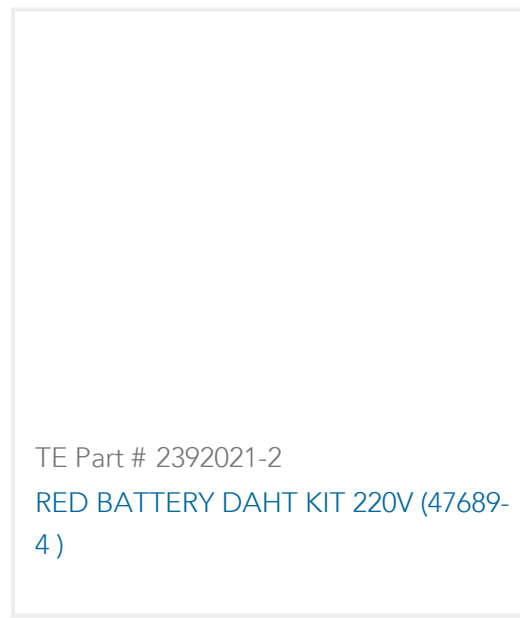
TE Part # 2063030-1  
SDE DIESET, RBY, UL

TE Part # 47806-2  
DIES PIDG 22-16 DIE SET

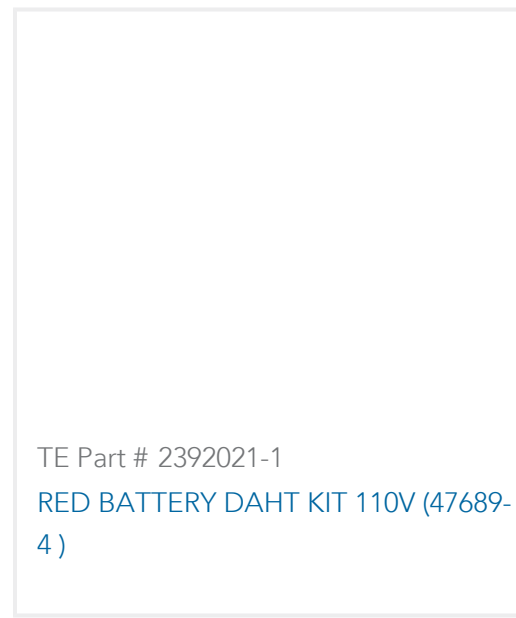
TE Part # 59300  
T-HEAD PIDG PG 26-16 ASSY



TE Part # 169400  
CERTI-LOK FRAME W/O DIES



TE Part # 2392021-2  
RED BATTERY DAHT KIT 220V (47689-4)

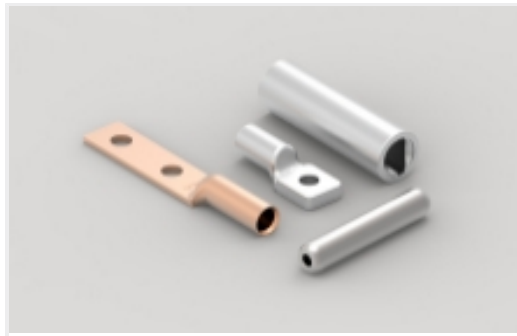


TE Part # 2392021-1  
RED BATTERY DAHT KIT 110V (47689-4)

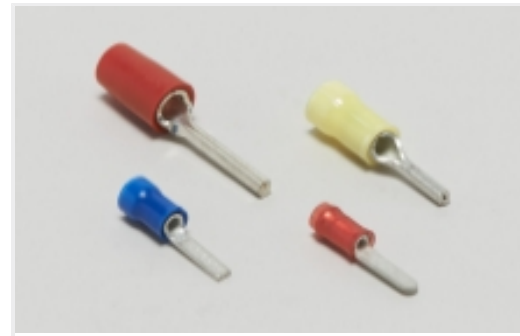


TE Part # 169404  
CERTI-LOK DIE

## Also in the Series | PIDG



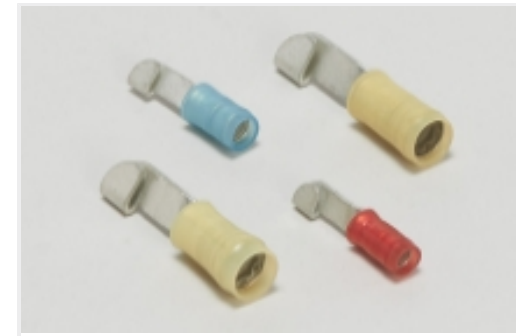
Compression Connectors(17)



Crimp Wire Pins, Tabs & Ferrules(41)



Hand Crimping Tools(2)



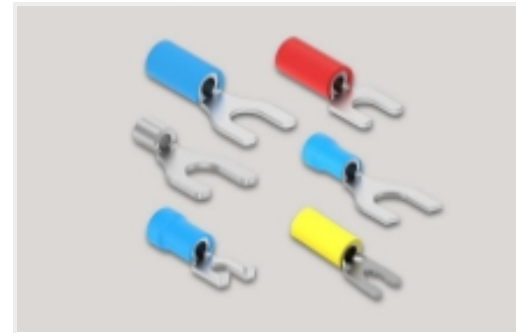
Knife Disconnects(11)



Quick Disconnects(32)



Ring Terminals(588)



Spade Terminals(228)



Special Purpose Terminals(1)

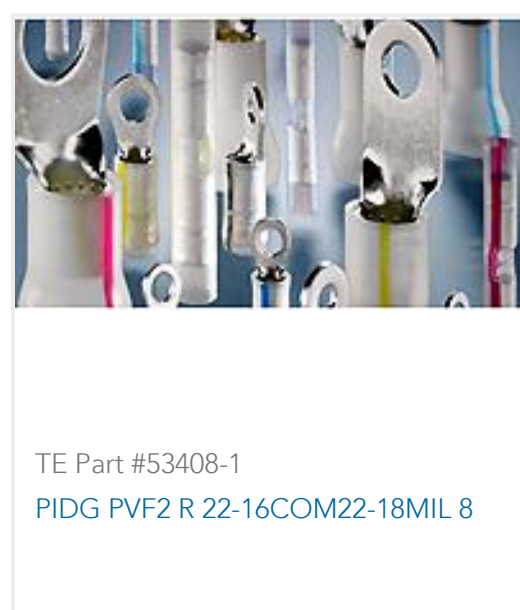


Splices(39)

## Customers Also Bought



TE Part #244837-E  
SMCQ 26 M AB VV 8-13 CL \* H007 137 E005



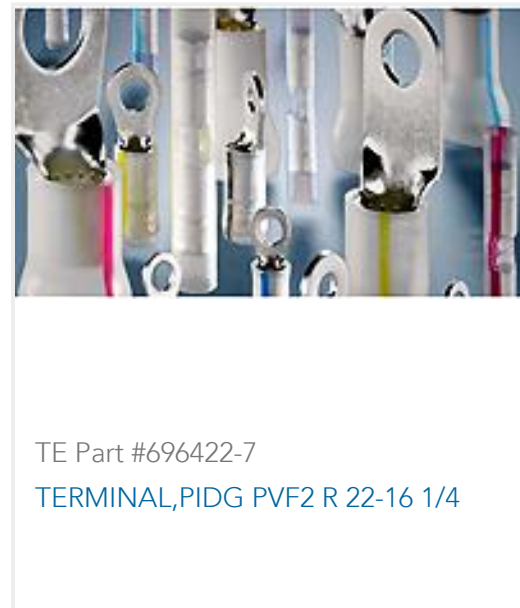
TE Part #53408-1  
PIDG PVF2 R 22-16COM22-18MIL 8



TE Part #2-592404-1  
5000-027-0020



TE Part #154806-E  
SMCB 26 F AB VV 7-13 CL \* H007 137 E002



## Documents

### Product Drawings

[PIDG PVF2 22-16COM22-18MIL5/16](#)

English

### CAD Files

Customer View Model

[ENG\\_CVM\\_53411-1\\_K.3d\\_igs.zip](#)

English

Customer View Model

[ENG\\_CVM\\_53411-1\\_K.3d\\_stp.zip](#)

English

Customer View Model

[ENG\\_CVM\\_53411-1\\_K.2d\\_dxf.zip](#)

English

### 3D PDF

English

By downloading the CAD file I accept and agree to the [Terms and Conditions](#) of use.