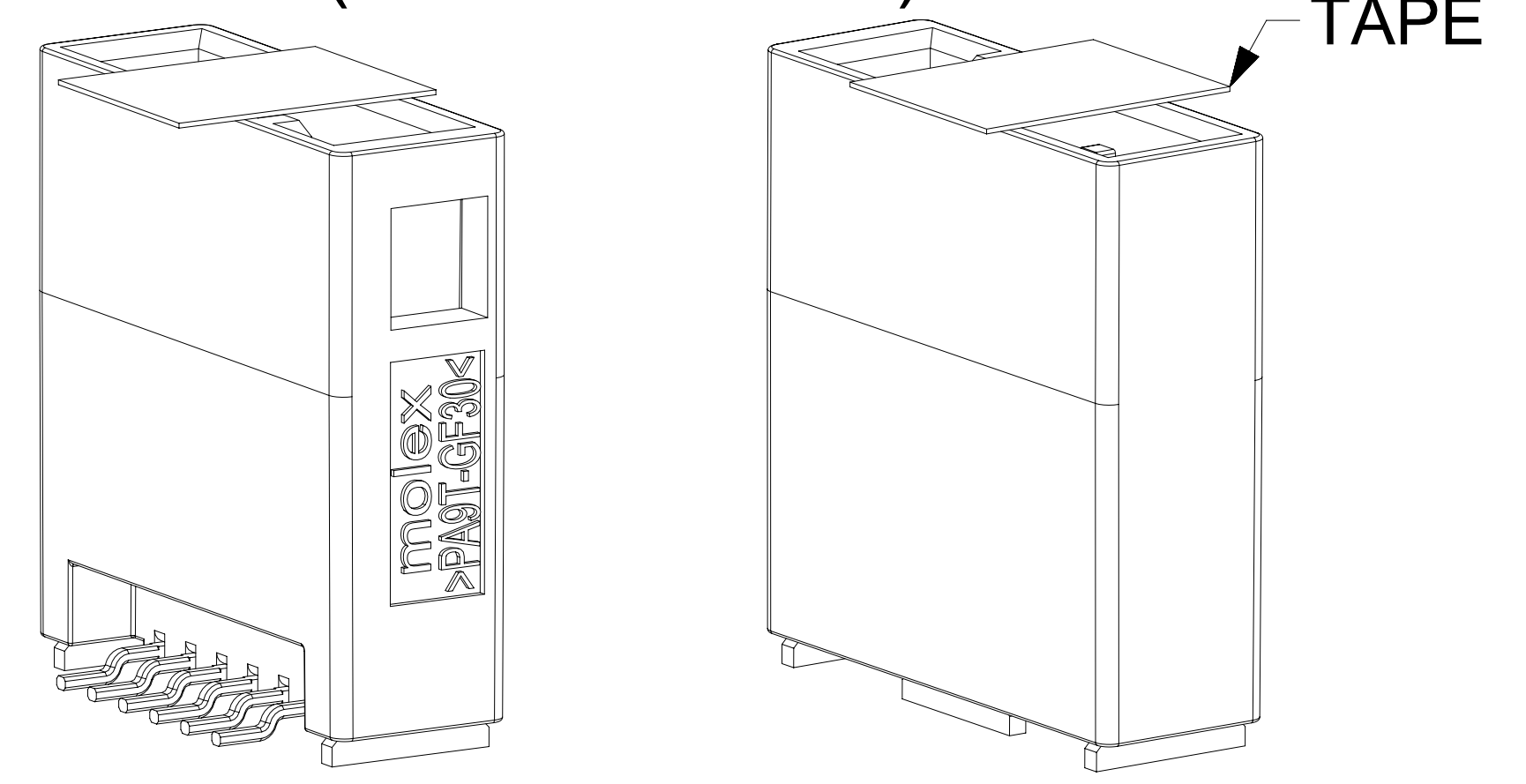


**EXAMPLE:**

PN 2080353041  
 208035 - SERIES NUMBER: SINGLE ROW VERTICAL SMT HEADER - STD. PERF.  
 3 - TYPE OF COMPONENT: V0 MATERIAL; WITH TAPE; FULLY POPULATED  
 04 - 4 USABLE CIRCUITS  
 1 - POL A

FINAL PART: 4CKT SINGLE ROW STANDARD PERFORMANCE VERTICAL SMT HEADER WITH TAPE - KEY A

# CONNTAK50 SINGLE ROW VERTICAL SMT HEADERS (6CKT SHOWN)



	SERIES NUMBERS (AAAAAA)	TYPE OF COMPONENT (B)	USABLE CIRCUITS (CC)	KEY (D)
MATING COMPONENTS	205827 - SR TANG RECEPTACLE	2 - V0 MATL; NO TAPE; FULLY POPULATED 3 - V0 MATL; WITH TAPE; FULLY POPULATED	02 - 2 Circuits	1 - KEY A
ON DRAWING	208037 - SR CLEAN BODY RECEPTACLE		...	2 - KEY B
OTHER	208035 - SR VERTICAL SMT HEADER - STANDARD PERF.		...	3 - KEY C
	208033 - SR RIGHT ANGLE SMT HEADER - STANDARD PERF.		11 - 11 Circuits	4 - KEY D

**NOTES:**

- VALID UNLESS OTHERWISE SPECIFIED
- GENERAL:
    - APPLICATION SPECIFICATION SEE: 2046310000-AS
    - PRODUCT SPECIFICATION SEE: 2046310000-PS
    - PACKAGING SPECIFICATION PER MOLEX DRAWING: 2080333021-PK
      - PACKAGING IS TAPE & REEL
    - COMPATIBLE WITH STANDARD AK INTERFACE C-114-94000-20 REV A1
    - CONFORMS TO MOLEX AK INTERFACE 2046310001 REV A
      - MOLEX AK INTERFACE IS PART OF PPAP
    - TRACEABILITY MARKED IN AREA SHOWN. MARK IS CODED AS FOLLOWS:
      - ROW 1 ("XXXXXXXXXX" OR "XXXXXXXXXX-X"):
        - "XXXXXXXXXX" IS MOLEX PART NUMBER ("-" INDICATES ASSEMBLY LINE NUMBER IF APPLICABLE)
      - ROW 2 (HHDDYY Z)
        - 1ST & 2ND DIGITS (HH): HOUR OF ASSEMBLY (24 HOUR CLOCK) (EXAMPLE: 15:00 --> "15", 7:00 --> "07")
        - 3RD THRU 5TH DIGITS (DDD): JULIAN DATE (EXAMPLE: FEBRUARY 3RD --> "034")
        - 6TH & 7TH DIGITS (YY): LAST 2 DIGITS OF CALENDAR YEAR (EXAMPLE: 2013 --> "13")
        - 8TH DIGIT (Z): PERFORMANCE MARKING.
  - DESIGN - MATERIALS:
    - SHROUD (PLASTIC HOUSING): PA9T-GF30%
  - DESIGN - GEOMETRY:
    - GEOMETRIC DIMENSIONS AND TOLERANCES PER ASME Y14.5M-2009

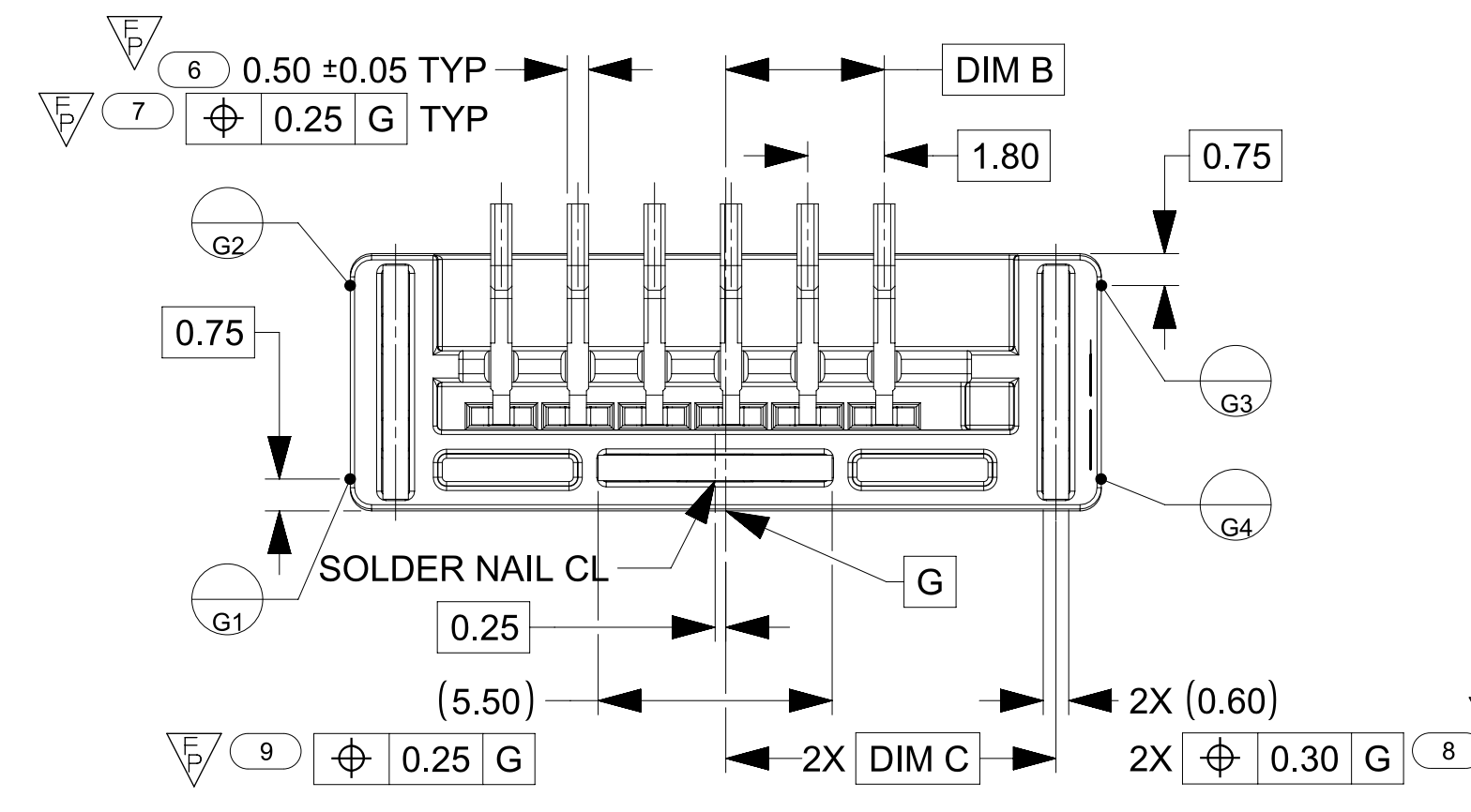
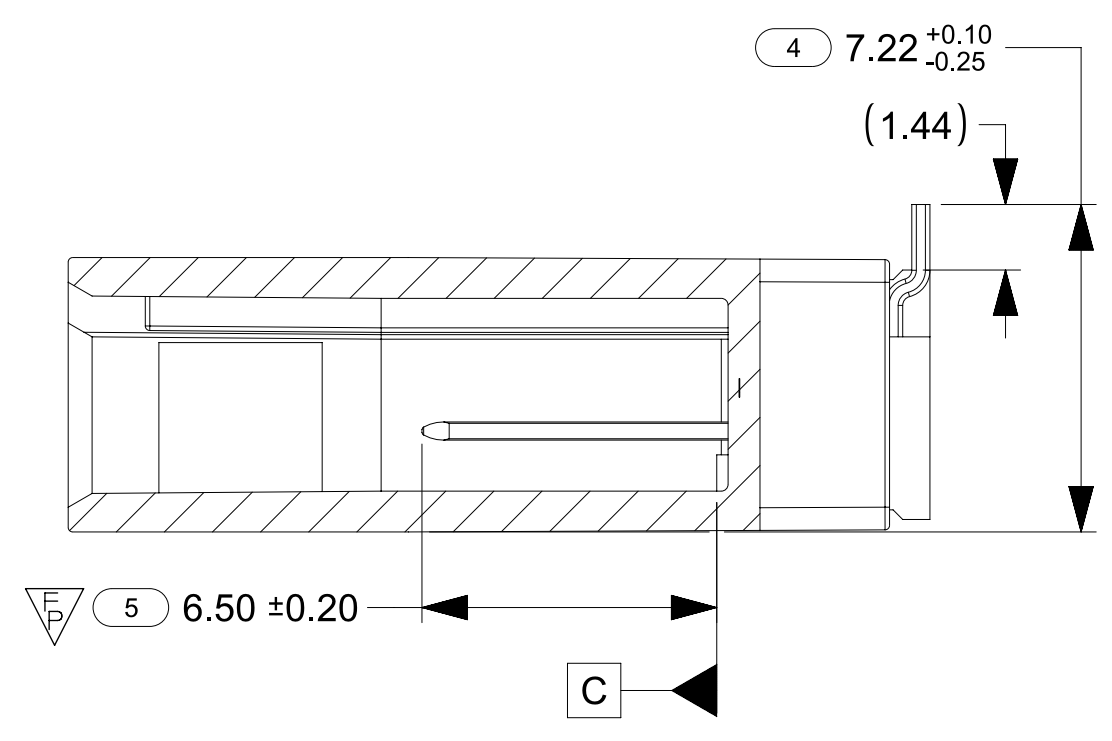
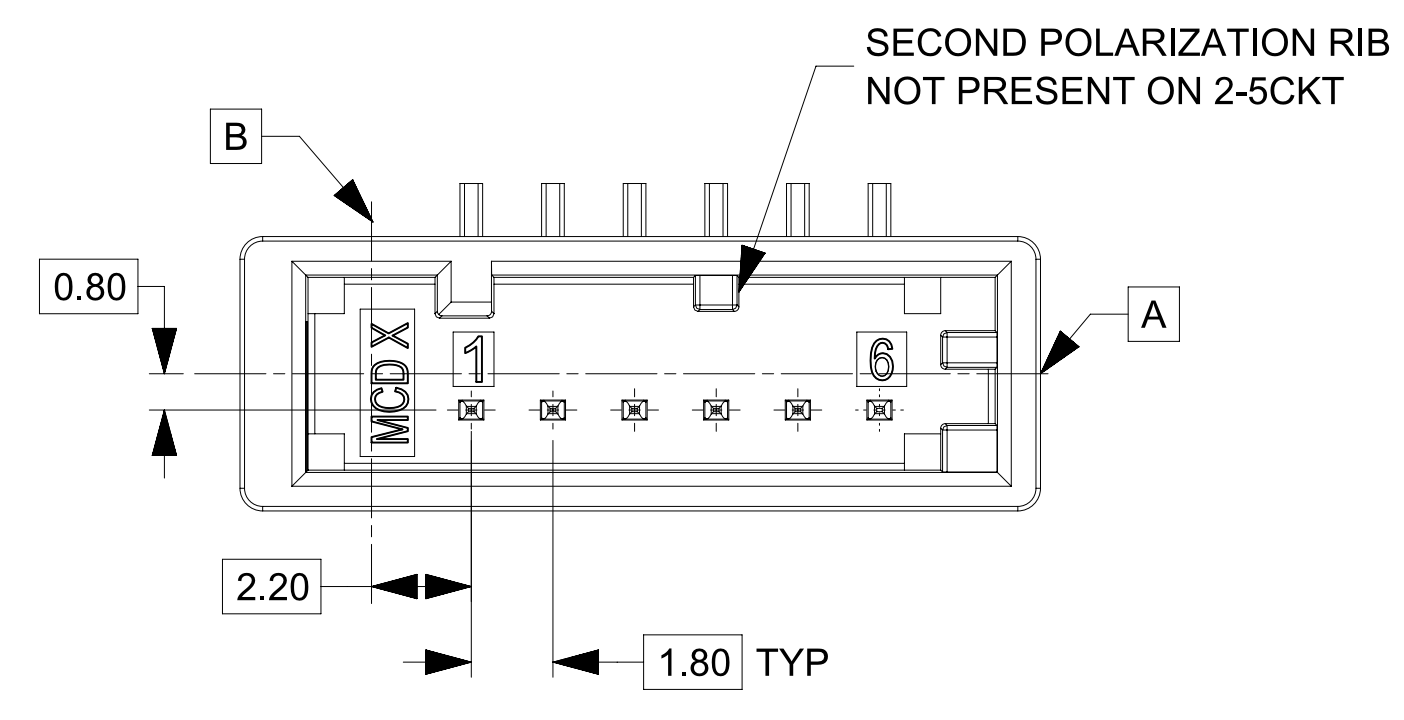
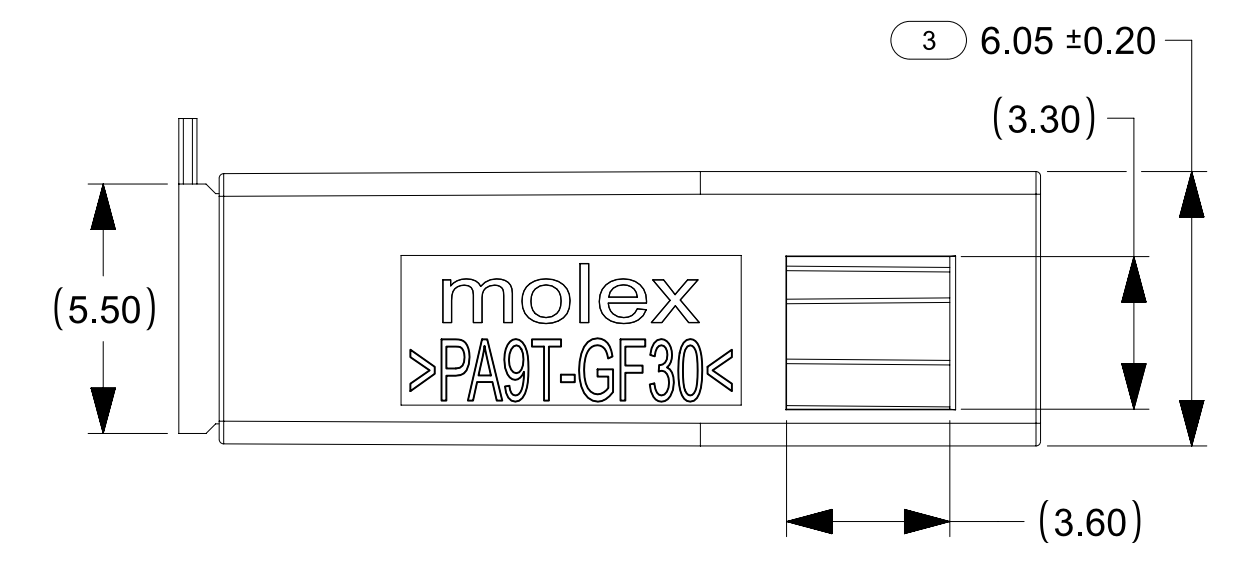
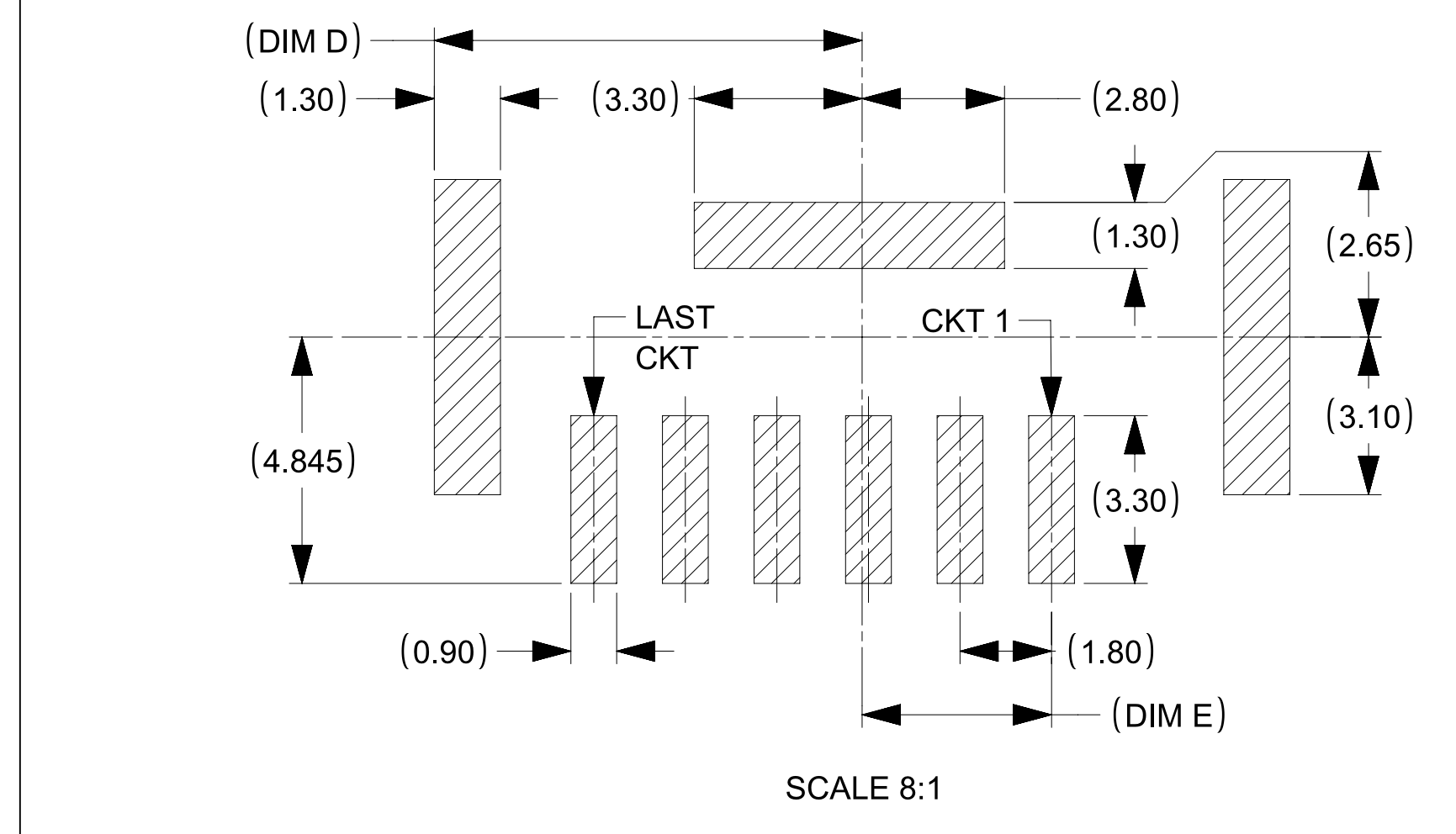
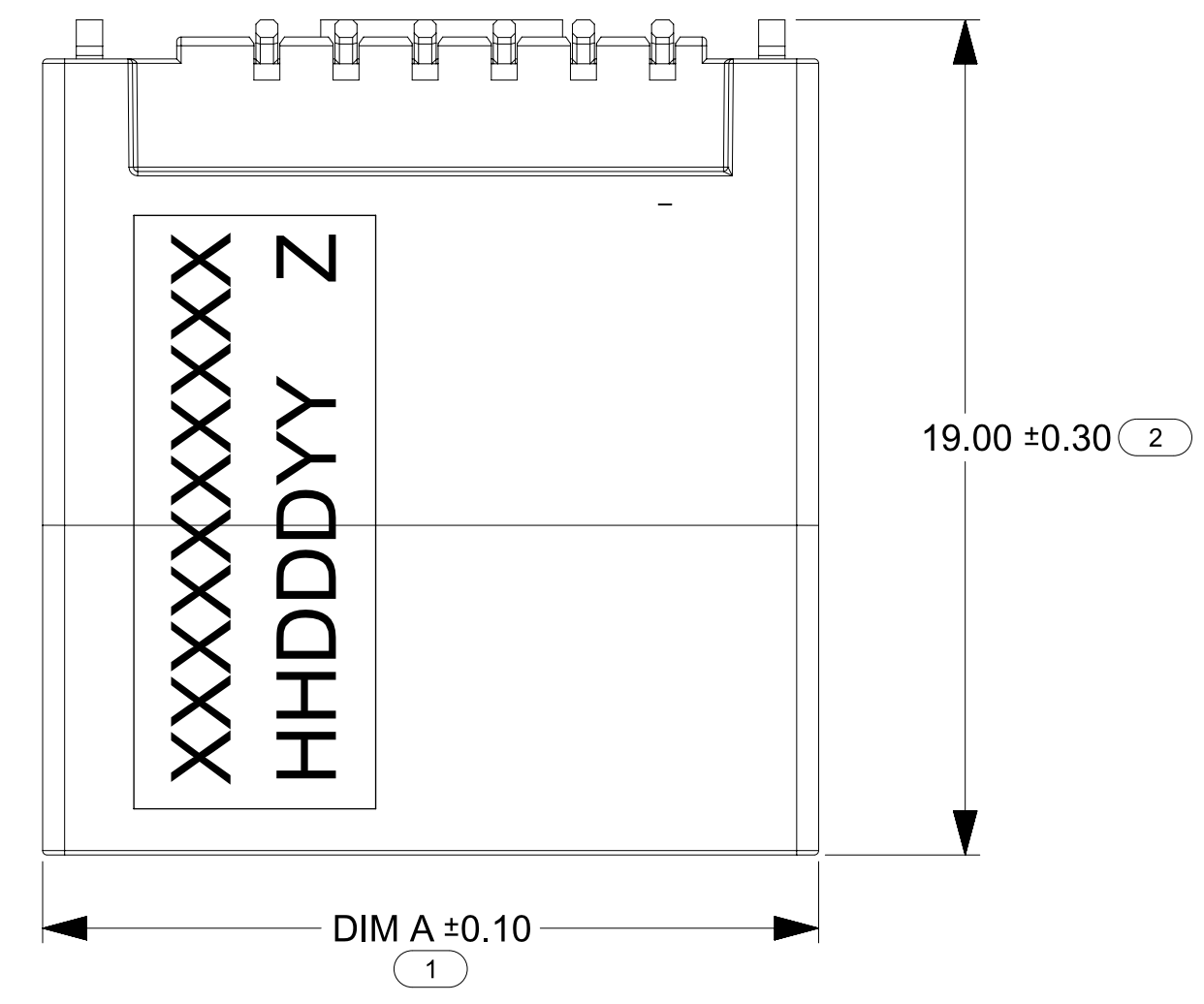
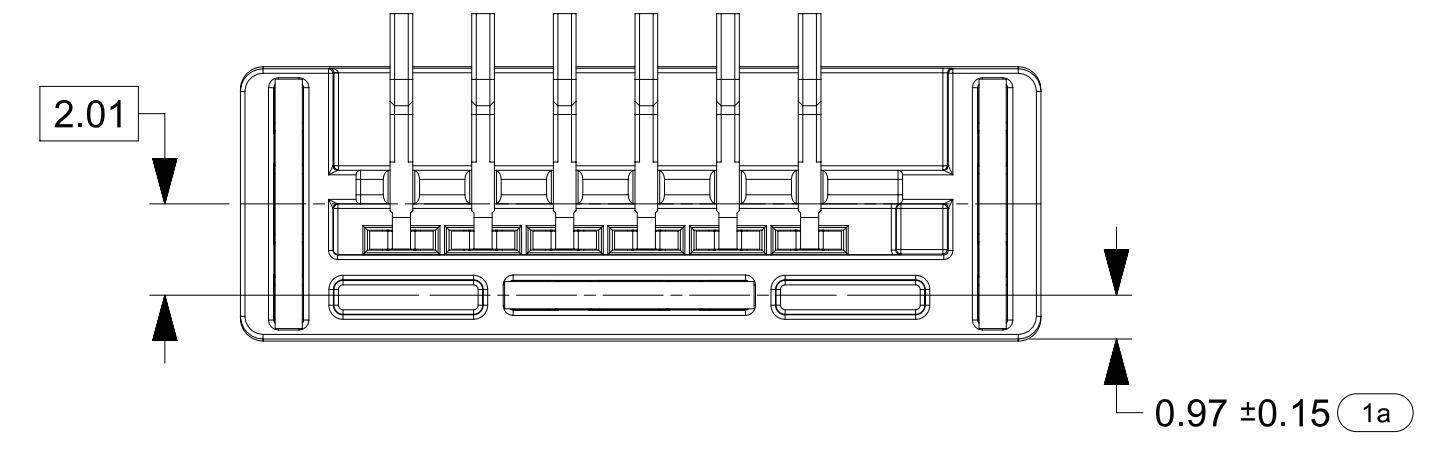
INTERFACE	INTERFACE CKT SIZE	DIM A	DIM B	DIM C	DIM D	DIM E	DIM F	KEY	COLOR	STANDARD PERFORMANCE VERTICAL V0 SMT HEADER			TOOLING STATUS
										NO TAPE PART NUMBER	WITH TAPE PART NUMBER	WEIGHT (g)	
	2	10.45	0.125	4.16	4.81	0.125	1.48	A	BLACK	2080352021	2080353021	1.05	AVAILABLE
								B	NATURAL	2080352022	2080353022	1.05	
								C	BLUE	2080352023	2080353023	1.05	
								D	VIOLET	2080352024	2080353024	1.05	
	3	12.25	1.025	5.06	5.71	1.025	2.38	A	BLACK	2080352031	2080353031	1.18	AVAILABLE
								B	NATURAL	2080352032	2080353032	1.18	
								C	BLUE	2080352033	2080353033	1.18	
								D	VIOLET	2080352034	2080353034	1.18	
	4	14.05	1.925	5.96	6.61	1.925	3.28	A	BLACK	2080352041	2080353041	1.31	AVAILABLE
								B	NATURAL	2080352042	2080353042	1.31	
								C	BLUE	2080352043	2080353043	1.31	
								D	VIOLET	2080352044	2080353044	1.31	
	5	15.85	2.825	6.86	7.51	2.825	4.18	A	BLACK	2080352051	2080353051	1.44	AVAILABLE
								B	NATURAL	2080352052	2080353052	1.44	
								C	BLUE	2080352053	2080353053	1.44	
								D	VIOLET	2080352054	2080353054	1.44	
	6	17.65	3.725	7.76	8.41	3.725	5.08	A	BLACK	2080352061	2080353061	1.57	AVAILABLE
								B	NATURAL	2080352062	2080353062	1.57	
								C	BLUE	2080352063	2080353063	1.57	
								D	VIOLET	2080352064	2080353064	1.57	
	7	19.45	4.625	8.66	9.31	4.625	5.98	A	BLACK	2080352071	2080353071	-	INQUIRE FOR AVAILABILITY
								B	NATURAL	2080352072	2080353072	-	
								C	BLUE	2080352073	2080353073	-	
								D	VIOLET	2080352074	2080353074	-	
	8	21.25	5.525	9.56	10.21	5.525	6.88	A	BLACK	2080352081	2080353081	-	INQUIRE FOR AVAILABILITY
								B	NATURAL	2080352082	2080353082	-	
								C	BLUE	2080352083	2080353083	-	
								D	VIOLET	2080352084	2080353084	-	
	9	23.05	6.425	10.46	11.11	6.425	7.78	A	BLACK	2080352091	2080353091	-	INQUIRE FOR AVAILABILITY
								B	NATURAL	2080352092	2080353092	-	
								C	BLUE	2080352093	2080353093	-	
								D	VIOLET	2080352094	2080353094	-	
	10	24.85	7.325	11.36	12.01	7.325	8.68	A	BLACK	2080352101	2080353101	-	INQUIRE FOR AVAILABILITY
								B	NATURAL	2080352102	2080353102	-	
								C	BLUE	2080352103	2080353103	-	
								D	VIOLET	2080352104	2080353104	-	
	11	26.65	8.225	12.26	12.91	8.225	9.58	A	BLACK	2080352111	2080353111	-	INQUIRE FOR AVAILABILITY
								B	NATURAL	2080352112	2080353112	-	
								C	BLUE	2080352113	2080353113	-	
								D	VIOLET	2080352114	2080353114	-	

PERFORMANCE MARK: S

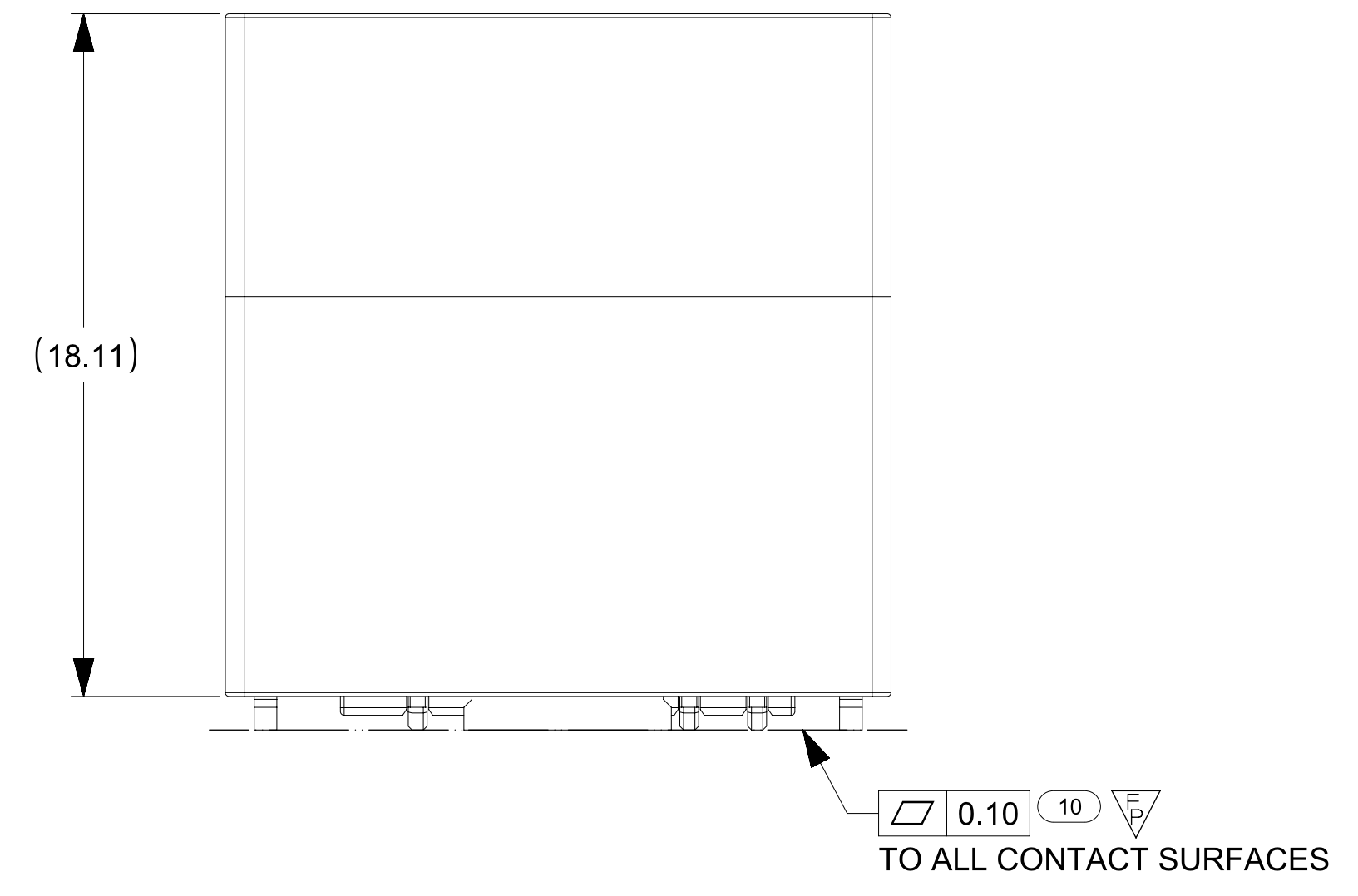
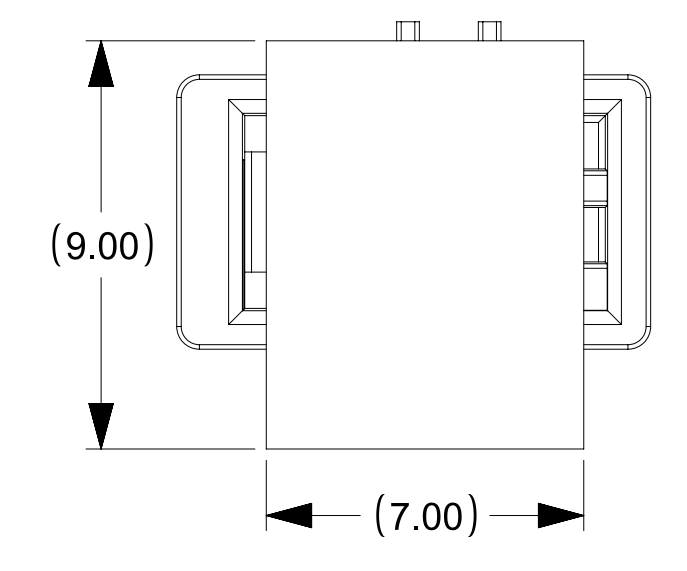
INSPECTION BALLOON LOG		B7	ADDED WEIGHTS TO BOM TABLE
PER DRAWING REVISION: B7		B6	ADDED: REFERENCE DIMS FOR PICKUP TAPE
LAST BALLOON USED: 10		B5	UPDATE: VIEWS FOR SWITCH TO PICKUP TAPE FROM CAP; POL B COLOR FROM GREY TO NATURAL
ADDED BALLOON NUMBERS:		B4	NO CHANGE TO SALES DRAWING, CHANGED ENGINEERING AND ASSEMBLY DRAWING
REMOVED BALLOON NUMBERS:		B3	UPDATED TOLERANCE ON DIM 3 FROM 0.10 TO 0.20MM
THIS DRAWING CONTAINS INFORMATION THAT IS PROPRIETARY TO MOLEX ELECTRONIC TECHNOLOGIES, LLC AND SHOULD NOT BE USED WITHOUT WRITTEN PERMISSION		B2	CHANGED CLEANBODY SERIES NUMBER IN THE TABLE
DIMENSION UNITS: MM		B1	ADDED DIM 1a
SCALE: 5:1		B	REMOVED DATUMS D, E, & F; ADDED DATUM G; UPDATED PCB LAYOUT; REMOVED HIGH PERFORMANCE PART NUMBERS; ADDED "NO CAP" PART NUMBERS; UPDATED STANDARD PERFORMANCE PLATING; RENUMBERED DIMENSIONS
CURRENT REV DESC: Weight Column added to BOM Table		REV	DESCRIPTION
GENERAL TOLERANCES (UNLESS SPECIFIED)		EC NO: CO-000022058	
ANGULAR TOL ± 0.5°		DRWN: Skyler Russ 05-Feb-2025	
4 PLACES ± 0		CHK'D: Skyler Russ 11-Feb-2025	
3 PLACES ± 0		APPR: Jeremy Dunaj 11-Feb-2025	
2 PLACES ± 0		INITIAL REVISION:	
1 PLACE ± 0		DRWN: infodba 17-Feb-2022	
0 PLACES ± 0		APPR: Paul Graczyk 21-Mar-2022	
DRAFT WHERE APPLICABLE MUST REMAIN WITHIN DIMENSIONS		THIRD ANGLE PROJECTION	
D-DRAWING		SERIES	
D-SIZE		208035	
MATERIAL NUMBER		CUSTOMER	
SEE TABLE		GENERAL MARKET	
DOCUMENT NUMBER		DOC TYPE DOC PART REVISION	
2080350003		PSD 000 B7	
SHEET NUMBER		1 OF 2	

6CKT KEY A (2080353061) SHOWN EXCEPT WHERE NOTED  
 REFER TO 2046310001 FOR INTERFACE DIMENSIONS

**POSSIBLE PCB LAYOUT**  
 LAND PATTERN SHOWN AT MMC



2CKT WITH TAPE  
 SHOWN FOR REFERENCE



KEYING OPTIONS			
KEY A (BLACK)	KEY B (NATURAL)	KEY C (BLUE)	KEY D (VIOLET)

THIS DRAWING CONTAINS INFORMATION THAT IS PROPRIETARY TO MOLEX ELECTRONIC TECHNOLOGIES, LLC AND SHOULD NOT BE USED WITHOUT WRITTEN PERMISSION

DIMENSION UNITS <b>MM</b>	SCALE <b>6:1</b>	CURRENT REV DESC: Weight Column added to BOM Table	<b>molex</b>			
GENERAL TOLERANCES (UNLESS SPECIFIED)		EC NO: CO-000022058				CONNTAK50 SR VERT HDR SALES DRAWING
ANGULAR TOL ± 0.5°	4 PLACES ± 0	DRWN: Skyler Russ 05-Feb-2025	PRODUCT CUSTOMER DRAWING			
3 PLACES ± 0	2 PLACES ± 0	CHK'D: Skyler Russ 11-Feb-2025	DOCUMENT NUMBER	DOC TYPE	DOC PART	REVISION
1 PLACE ± 0	0 PLACES ± 0	APPR: Jeremy Dunaj 11-Feb-2025	2080350003	PSD	000	B7
DRAFT WHERE APPLICABLE MUST REMAIN WITHIN DIMENSIONS		INITIAL REVISION: DRWN: infodba 17-Feb-2022 APPR: Paul Graczyk 21-Mar-2022	MATERIAL NUMBER	CUSTOMER	SHEET NUMBER	
THIRD ANGLE PROJECTION		DRAWING <b>D-SIZE</b>	SERIES <b>208035</b>	SEE TABLE	GENERAL MARKET	2 OF 2