



This document is the property of Amphenol Corporation and is delivered on the express condition that it is not to be disclosed, reproduced or used, in whole or in part, for manufacture or sale by anyone other than Amphenol Corporation without its prior consent, and that no right is granted to disclose or to use any information in this document.

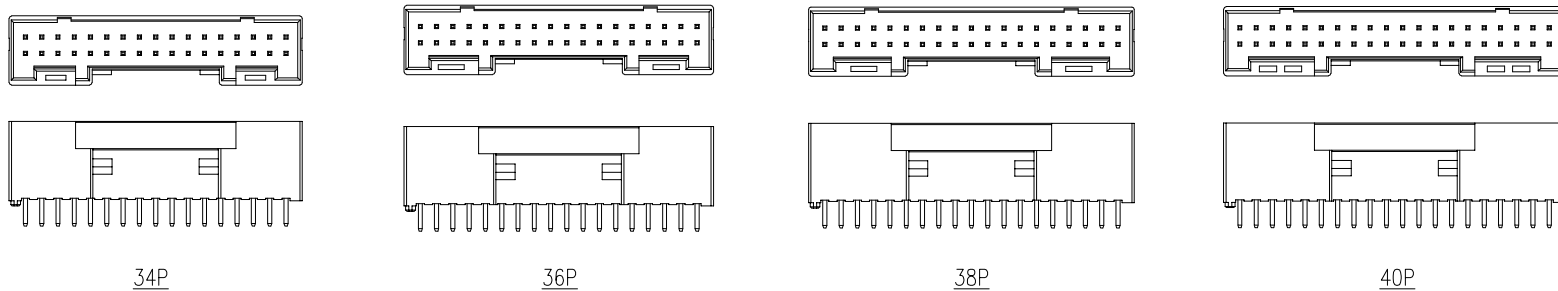
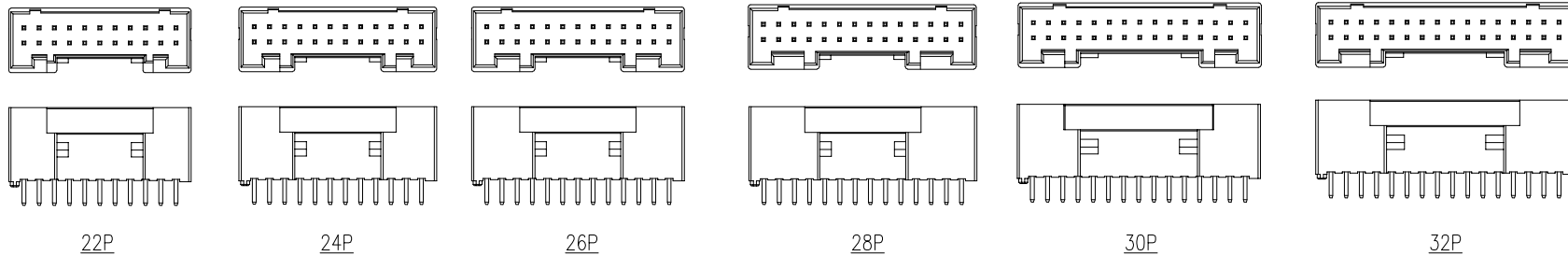
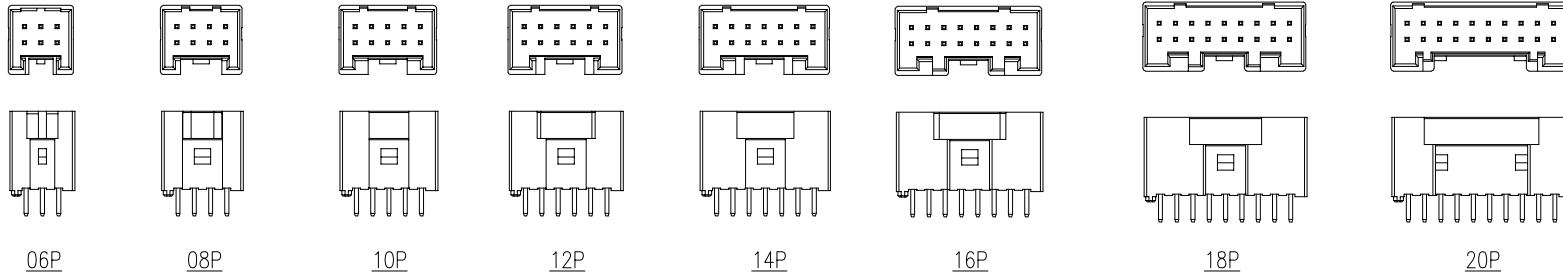
The marking on this product doesn't contain environmental hazardous materials per directive 2011/65/EU & 2015/863/EU for RoHS compliant and per IEC 61249-2-21 for Halogen-Free compliant.



ORIGINAL



REVISIONS				
SYM	ECN No.	DESCRIPTION	DATE	BY
C	NE-21099	MISTAKE CAP DIM, ADD D/C, PIN WIDTH, ADD SOLDER AREA PLATING INFORMATION, UPDATED THE TUBE VIEWER AND THE HOLE FOR RECOMMENDED PCB LAYOUT	2021-10-15	Sandy Wu
D	NE-23054	ADD 2X03 PIN	2023-03-06	Roy Lin
E	NE-23157	UPDATE D/C POSITION AND APPEARANCE OF EACH PIN	2023-06-09	Roy Lin
F	NE-26037	ADD TAIL OPTION	2026-02-10	Roy Lin



TOLERANCE X. ±0.30 X.X ±0.20 X.XX ±0.10 X.XXX ±0.10 ANGULAR ±1° UNLESS OTHERWISE SPECIFIED	APPROVALS DRAWN Roy Lin CHECKED Joseph Jiang APPROVED Joseph Jiang	DATE 2026-02-10 2026-02-10 2026-02-10	TITLE G861 SERIES, PROTECTED HEADER, 2.00 PITCH STRAIGHT, PCB MOUNT	UNIT mm SCALE NA		SIZE A3 SHEET 2 OF 4	PART No. G861XXX1XS1HR DWG No. G861XXX1XS1HR		
	APPROVED Joseph Jiang DWG TYPE CUST DWG PROJECT CODE PHD					REV. F			

A  
B  
C  
D  
E  
F

A  
B  
C  
D  
E  
F

This document is the property of Amphenol Corporation and is delivered on the express condition that it is not to be disclosed, reproduced or used, in whole or in part, for manufacture or sale by anyone other than Amphenol Corporation without its prior consent, and that no right is granted to disclose or to use any information in this document.

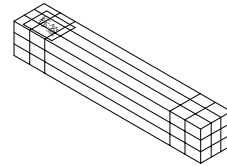
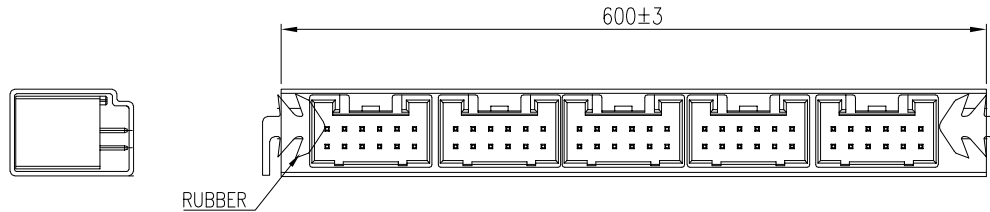
The marking on this product doesn't contain environmental hazardous materials per directive 2011/65/EU & 2015/863/EU for RoHS compliant and per IEC 61249-2-21 for Halogen-Free compliant.



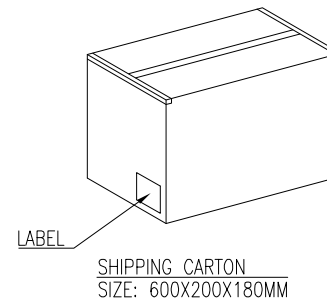
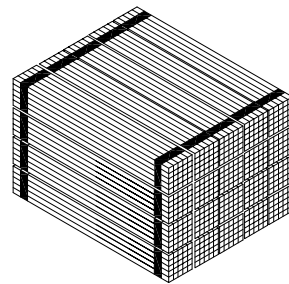
ORIGINAL



REVISIONS				
SYM	ECN No.	DESCRIPTION	DATE	BY
C	NE-21099	MISTAKE CAP DIM, ADD D/C, PIN WIDTH, ADD SOLDER AREA PLATING INFORMATION, UPDATED THE TUBE VIEWER AND THE HOLE FOR RECOMMENDED PCB LAYOUT	2021-10-15	Sandy Wu
D	NE-23054	ADD 2X03 PIN	2023-03-06	Roy Lin
E	NE-23157	UPDATE D/C POSITION AND APPEARANCE OF EACH PIN	2023-06-09	Roy Lin
F	NE-26037	ADD TAIL OPTION	2026-02-10	Roy Lin



9 TUBE/BUNDLE



POS.	PCS/TUBE	TUBE/CARTON	PCS/CARTON
2x03	72	9X14=126	9072
2x04	58	9X14=126	7308
2x05	48	9X14=126	6048
2x06	41	9X14=126	5166
2x07	36	9X14=126	4536
2x08	32	9X14=126	4032
2x09	29	9X14=126	3654
2x10	26	9X14=126	3276
2x11	24	9X14=126	3024
2x12	22	9X14=126	2772
2x13	20	9X14=126	2520
2x14	19	9X14=126	2394
2x15	18	9X14=126	2268
2x16	17	9X14=126	2142
2x17	16	9X14=126	2016
2x18	15	9X14=126	1890
2x19	14	9X14=126	1764
2x20	13	9X14=126	1638

TOLERANCE	APPROVALS	DATE	TITLE		Amphenol®			
X. ±0.30	DRAWN Roy Lin	2026-02-10	G861 SERIES, PROTECTED HEADER, 2.00 PITCH STRAIGHT, PCB MOUNT		Amphenol Corporation Amphenol Taiwan Corporation			
X.X ±0.20	CHECKED Joseph Jiang	2026-02-10						
X.XXX ±0.10	APPROVED Joseph Jiang	2026-02-10	UNIT mm		SIZE A3	PART No. G861XXX1XS1HR		
ANGULAR ±1°	DWG TYPE CUST DWG	PROJECT CODE PHD	SCALE NA		SHEET 3 OF 4	DWG No. G861XXX1XS1HR		REV. F
UNLESS OTHERWISE SPECIFIED								

This document is the property of Amphenol Corporation and is delivered on the express condition that is not to be disclosed, reproduced or used, in whole or in part, for manufacture or sale by anyone other than Amphenol Corporation without its prior consent, and that no right is granted to disclose or to use any information in this document.

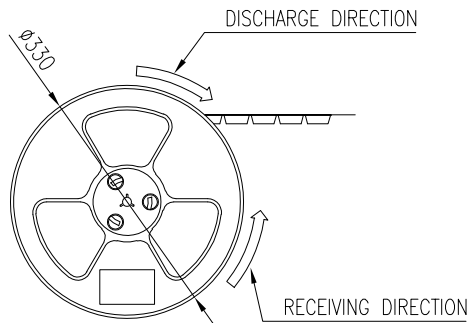
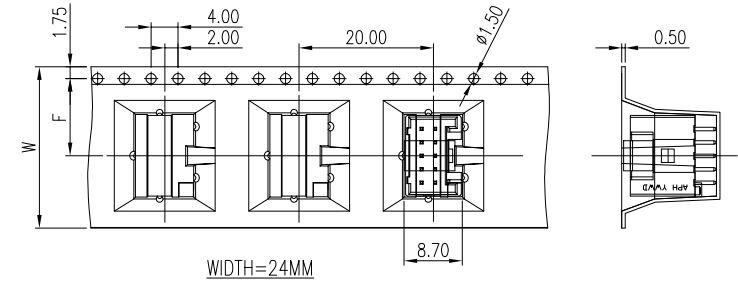
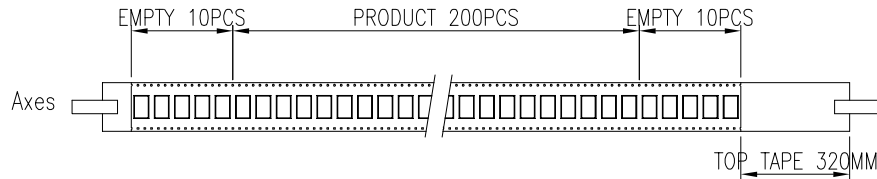
The marking on this product doesn't contain environmental hazardous materials per directive 2011/65/EU & 2015/863/EU for RoHS compliant and per IEC 61249-2-21 for Halogen-Free compliant.



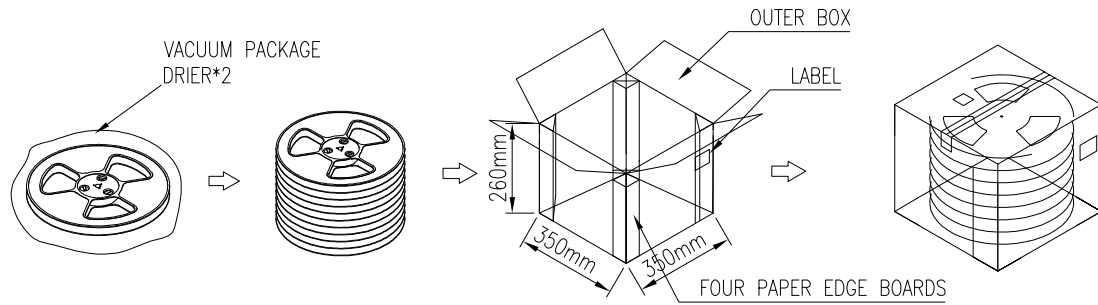
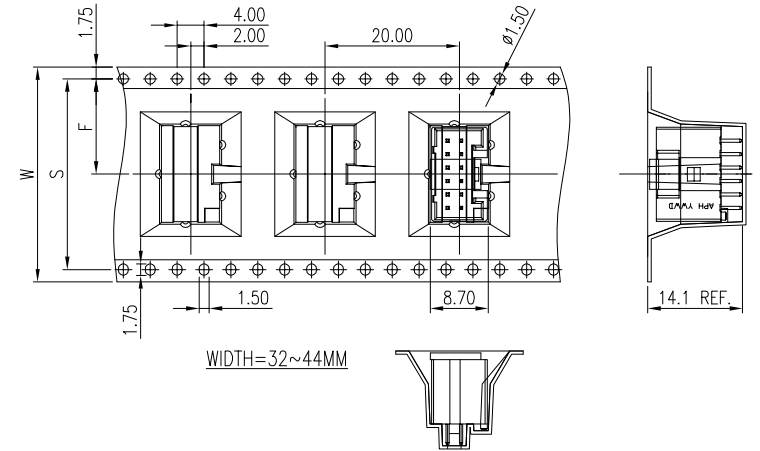
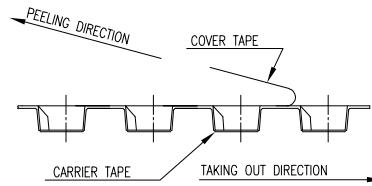
ORIGINAL



REVISIONS				
SYM	ECN No.	DESCRIPTION	DATE	BY
C	NE-21099	MISTAKE CAP DIM, ADD D/C, PIN WIDTH, ADD SOLDER AREA PLATING INFORMATION, UPDATED THE TUBE VIEWER AND THE HOLE FOR RECOMMENDED PCB LAYOUT	2021-10-15	Sandy Wu
D	NE-23054	ADD 2X03 PIN	2023-03-06	Roy Lin
E	NE-23157	UPDATE D/C POSITION AND APPEARANCE OF EACH PIN	2023-06-09	Roy Lin
F	NE-26037	ADD TAIL OPTION	2026-02-10	Roy Lin



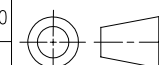
COVER TAPE PEEL STRENGTH:20~120g  
PEEL SPEED:300mm/minute



2X16=32~2X20=40	56	26.2	200	4R	800
2X10=20~2X15=30	44	20.2	200	4R	800
2X06=12~2X09=18	32	14.2	200	6R	1200
2X03=06~2X05=10	24	11.5	200	8R	1600
PIN NO.	W	F	REEL /PCS	CARTON /R	CARTON /PCS

TOLERANCE	APPROVALS	DATE
X.	DRAWN Roy Lin	2026-02-10
X.X ±0.30	CHECKED Joseph Jiang	2026-02-10
X.XX ±0.20	APPROVED Joseph Jiang	2026-02-10
X.XXX ±0.10	DWG TYPE CUST DWG	PROJECT CODE PHD
ANGULAR ±1°		
UNLESS OTHERWISE SPECIFIED		

TITLE			PART No.		
G861 SERIES, PROTECTED HEADER, 2.00 PITCH STRAIGHT, PCB MOUNT			G861XXX1XS1HR		
UNIT mm	SIZE A3	DWG No. G861XXX1XS1HR	REV. F		
SCALE NA	SHEET 4 OF 4				



Amphenol®

Amphenol Corporation  
Amphenol Taiwan Corporation