

10118940-YXX-ZZZLF

NOTE 6 & 8

POLARIZATION CODE
(AS AVAILABLE)
(OPTIONAL)
SEE NOTE 9

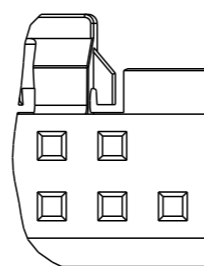
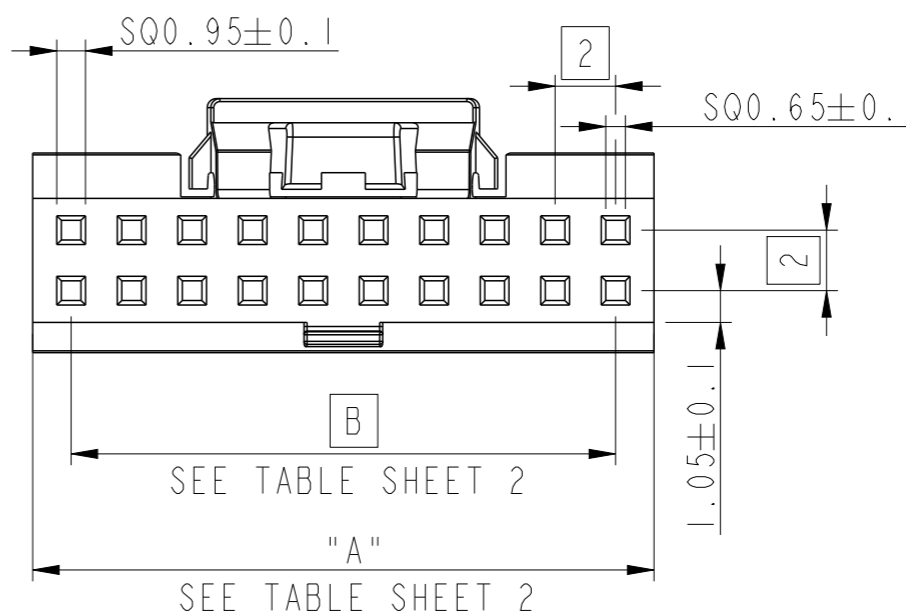
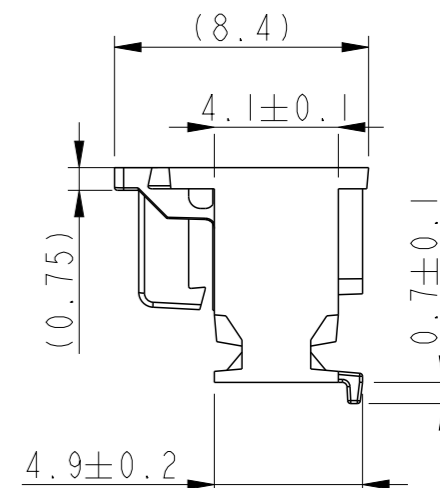
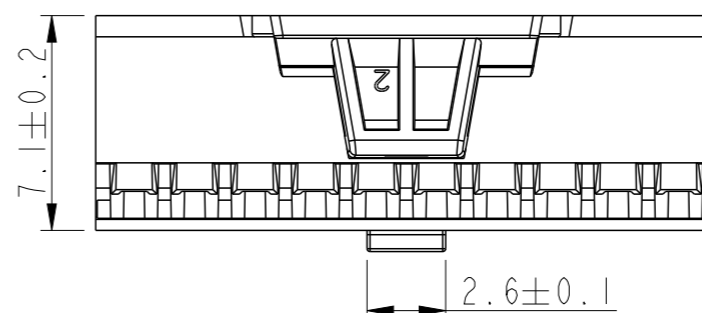
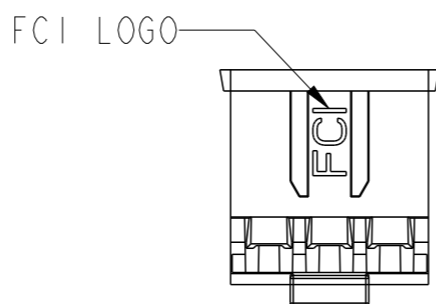
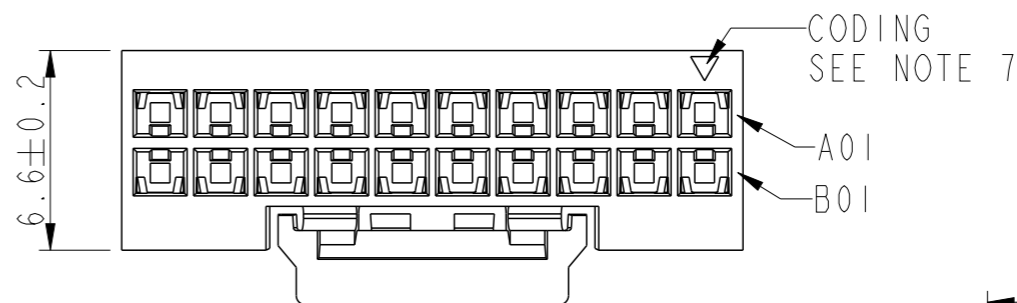
TOTAL NB OF POSITIONS

COLOR OPTION
(AS AVAILABLE)

- 0 : COLOR BLACK
- 1 : COLOR CREAM
- 2 : HALOGEN FREE
COLOR BLACK
- 3 : HALOGEN FREE
COLOR NATURAL

EXTENDED RANGE

- TOOLING FEASIBILITY CONFIRMED
- SAMPLES ON DEMAND
- AVAILABILITY ON DEMAND

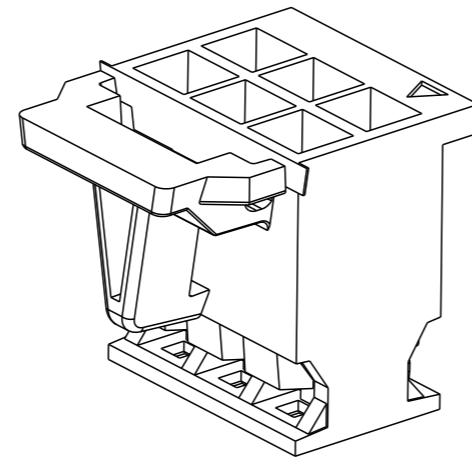
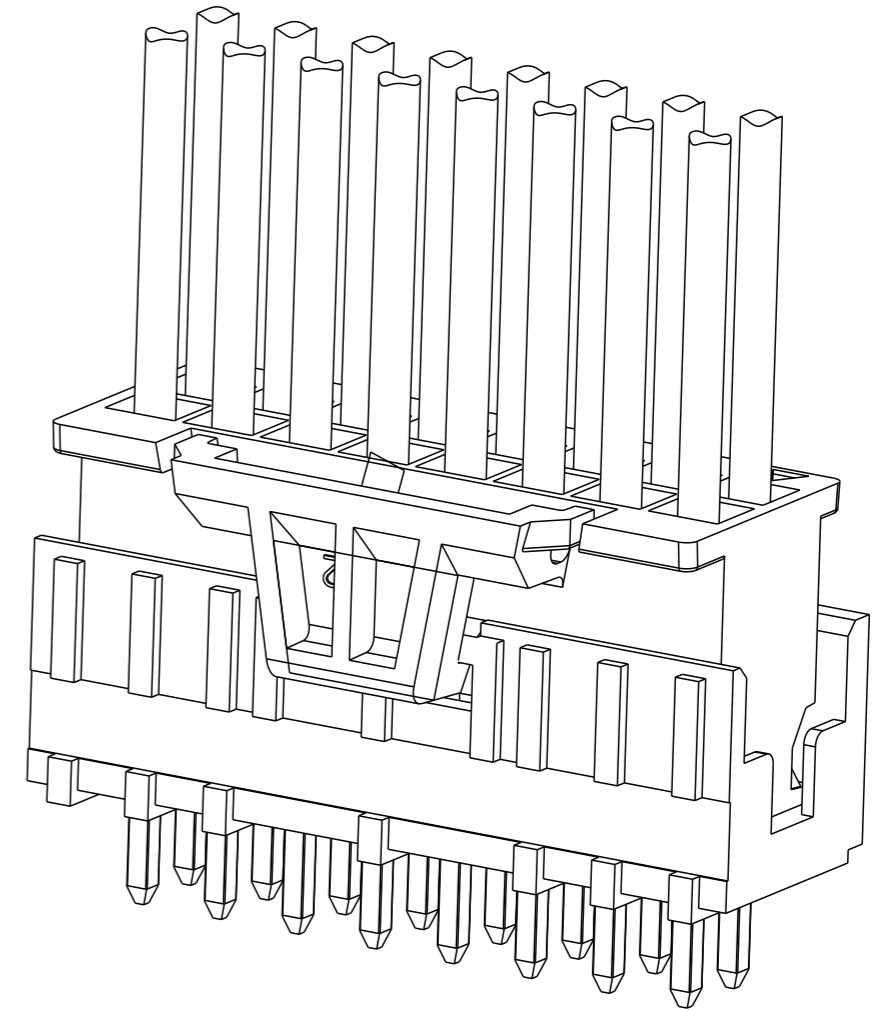


CAVITY FILLED EXAMPLE
(...-BO1LF)
SEE NOTE 9

- NOTES :
- 1 - MATERIAL : PA6.6 25% GLASSFILLED, UL-94V-0 MEETS GWT 900°C-960°C.
 - 2 - FOR USE WITH MINITEK CTW CONTACTS: AWG 26-30, SERIE 77138 AWG 22-24 SERIE 10044403
 - 3 - TO BE MATED WITH MINITEK HEADERS SERIES 98414 / 98416 / 98417 / 98424 AND 10075025.
 - 4 - PRODUCT SPECIFICATIONS : GS-12-415
 - 5 - PACKAGING BULK.
 - 6 - RoHS COMPLIANT, THE PRODUCT IS NOT INTENDED TO BE EXPOSED TO ANY SOLDER PROCESS.
 - 7 - THE TRIANGLE INDICATES THE FIRST POSITION
 - 8 - PRODUCT MEETS EUROPEAN UNION DIRECTIVES AND OTHERS COUNTRY REGULATIONS AS PER GS-022-008.
 - 9 - FOR POLARIZATION, SPECIFIED THE CAVITY NUMBER EXAMPLE: -B01 = ROW B, CAVITY 01 FILLED. OMIT FROM PART NUMBER IS FEATURE NOT APPLICABLE.
 - 10 - THIS PART SERIES IS NOT INITIALLY INTENDED FOR AUTOMOTIVE APPLICATIONS. ADDITIONAL FEES ARE CHARGEABLE FOR ANY ADDITIONAL QUALIFICATION AND TEST REPORTS PERFORMED OUTSIDE THE SCOPE OF THE STANDARD PRODUCT SPECIFICATIONS.
 - 11 - UNLESS OTHERWISE APPROVED BY AMPHENOL, ALL PARTS AND COMPONENTS ARE DESIGNED & BUILT ACCORDING TO AMPHENOL'S SPECIFICATIONS WHICH ARE SUBJECT TO CHANGE WITHOUT NOTICE.

spec ref	-	dr	Vernier, Benoi	2015/10/23	projection	mm	size	A3	scale	4:1	
tolerance std	ISO 406 ISO 1101	eng	Laurent Mulin	2025/02/04			ecn no	ELX-F-54272-1			
surface	linear	chr	-	apppr			Lamy, Alexandr	2025/04/07	rel level	Released	
	angular	0°	±0.3	±0.10	±0.05	±2°	product family	MINITEK CTW HOUSING			
							product family	ACTIVE LATCH II , ADVANCED			
							dwg no	10118940		rev	M
							cat. no.	Product - Customer Drw		sheet 1 of 2	

PART NUMBER	NBR OF POS	"A"±0.2	"B"	TOOLED
10118940-Y06LF	2x3	6.54	4.00	YES
10118940-Y08LF	2x4	8.54	6.00	YES
10118940-Y10LF	2x5	10.54	8.00	YES
10118940-Y12LF	2x6	12.54	10.00	YES
10118940-Y14LF	2x7	14.54	12.00	YES
10118940-Y16LF	2x8	16.54	14.00	YES
10118940-Y18LF	2x9	18.54	16.00	YES
10118940-Y20LF	2x10	20.54	18.00	YES
10118940-Y22LF	2x11	22.54	20.00	YES
10118940-Y24LF	2x12	24.54	22.00	YES
10118940-Y26LF	2x13	26.54	24.00	YES
10118940-Y28LF	2x14	28.54	26.00	YES
10118940-Y30LF	2x15	30.54	28.00	YES
10118940-Y32LF	2x16	32.54	30.00	YES
10118940-Y34LF	2x17	34.54	32.00	YES



DESIGN FOR 10118940-006LF
& 10118940-008LF ONLY

APPLICATION
SEE NOTE 2 & 3

spec ref	-	dr	Vernier, Benoi	2015/10/23	projection	mm	size	A3	scale	4:1	
tolerance std	ISO 406 ISO 1101	eng	Laurent Mulin	2025/02/04			ecn no	ELX-F-54272-1			
TOLERANCES UNLESS OTHERWISE SPECIFIED		chr	-	-			rel level	Released			
surface	linear	appr	Lamy, Alexandr	2025/04/07	product family		dwg no	10118940		rev	M
	angular				MINITEK CTW HOUSING ACTIVE LATCH II , ADVANCED		Product - Customer Drw		sheet 2 of 2		
ISO 1302	0.X ±0.3 0.XX ±0.10 0.XXX ±0.05 0° ±2°	Amphenol FCI amphenol-icc.com		cat. no.	Product - Customer Drw		STATUS:Released		Printed: Apr 08, 2025		