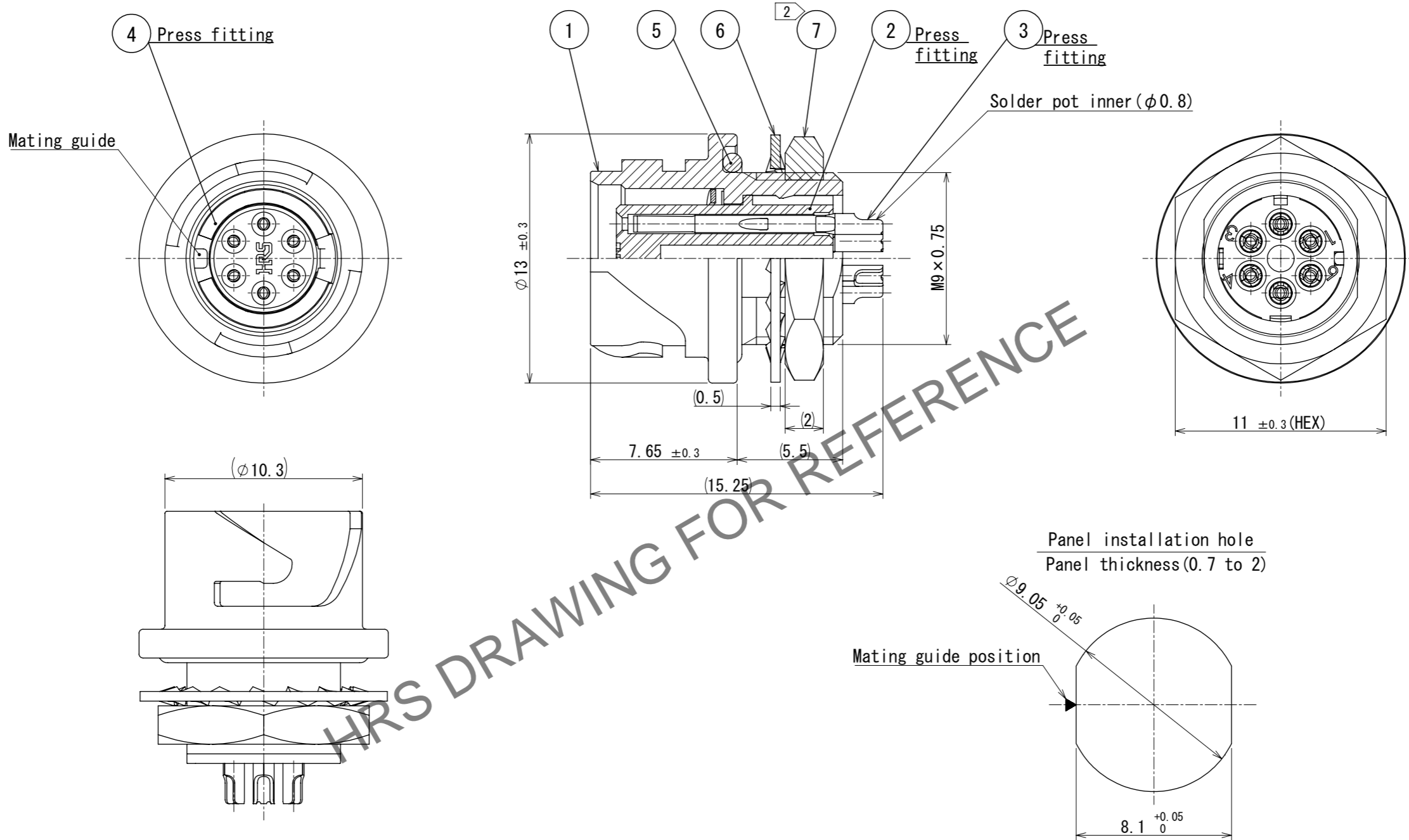


May.1.2026 Copyright 2026 HIROSE ELECTRIC CO., LTD. All Rights Reserved.
In case of consideration for using Automotive equipment / device which demand high reliability, kindly contact our sales window correspondents.



- Notes
- ① Plating (Ref. No. ③)
Contact area : gold 0.2 μm min.
Others : gold and nickel
Under plating: nichel 2 μm min.
 - ② The recommend clamp torque of Ref. No. ⑦ to be 1.5 to 2 N·m.
Thread locker to the threaded portion of Ref. No. ① apply to prevent Ref. No. ⑦ from loosening.
Recommended thread locker : Loctite 263, Henkel Japan Ltd.
 - ③ When this connector is mounted on to panel, be careful Ref. No. ⑤ is assembled surely into the groove of Ref. No. ① as shown in this figure to keep waterproof effectiveness.

△ CAD change

NO.	MATERIAL	FINISH	REMARKS	NO.	MATERIAL	FINISH	REMARKS
4	Phosphor bronze	Nickel plating					
3	Phosphor bronze	①		7	Steel	Nickel plating	
2	Polyphenylene sulfide	(Black) UL94V-0		6	Steel	Nickel plating	
1	Zinc alloy	Nickel plating		5	Chloroprene rubber	(Black)	

UNITS	SCALE	COUNT	DESCRIPTION OF REVISIONS	DESIGNED	CHECKED	DATE
mm	4:1	2	DIS-C-00018125	Y.J. KOGA	HY. KOBAYASHI	2024. 11. 01

HIROSE ELECTRIC CO., LTD.	APPROVED : MR. YOSHIDA	2005. 01. 05	DRAWING NO.	EDC-113851-00-00
	CHECKED : MO. SATOH	2005. 01. 05	PART NO.	LF07WBR-6S
	DESIGNED : YH. YAMADA	2005. 01. 05	CODE NO.	CL0136-1002-0-00
	DRAWN : YH. YAMADA	2005. 01. 05		