



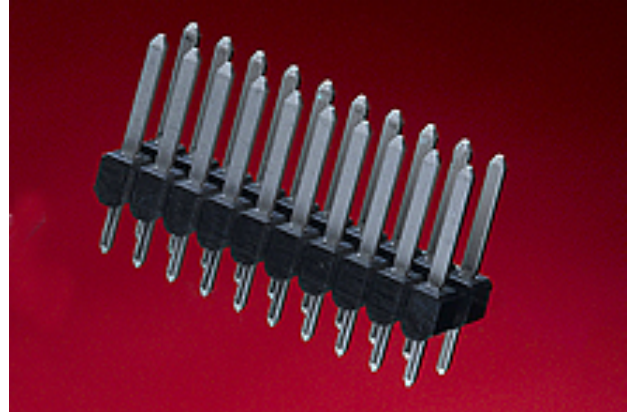
**Part Number :** [757575301](#)

**Product Description :** MX150 Dual Row Header, Vertical, 20 Circuits, 1.25µm Nickel (Ni) Overall, 2.50µm Minimum Select Matte Tin (Sn) Plating on Tail, 0.75µm Select Gold (Au) Contact Area, 16.09mm Mating Pin Length, 3.05m

**Series Number :** 75757

**Status :** Active

**Product Category :** PCB Headers and Receptacles



---

## Documents & Resources

### Drawings

[757575301\\_sd.pdf](#)

[PK-36518-340-001.pdf](#)

### 3D Models and Design Files

[757575301\\_stp.zip](#)


### Specifications

[PS-75757-000-001.pdf](#)

---

## Product Environment Compliance

### Compliance

GADSL/IMDS	Not Relevant
China RoHS	
EU ELV	Not Relevant
Low-Halogen Status	Low-Halogen per IEC 61249-2-21
REACH SVHC	Not Contained per D(2024)6225-DC (07 Nov 2024)
EU RoHS	Compliant per EU 2015/863

### Multiple Part Product Compliance Statements

- Eu RoHS
- REACH SVHC
- Low-Halogen

### Multiple Part Industry Compliance Documents

- IPC 1752A Class C
- IPC 1752A Class D
- Molex Product Compliance Declaration
- IEC-62474
- chemSHERPA (xml)

EU RoHS Certificate of Compliance

---

## Part Details

### General

Status	Active
Category	PCB Headers and Receptacles
Series	75757
Description	MX150 Dual Row Header, Vertical, 20 Circuits, 1.25µm Nickel (Ni) Overall, 2.50µm Minimum Select Matte Tin (Sn) Plating on Tail, 0.75µm Select Gold (Au) Contact Area, 16.09mm Mating Pin Length, 3.05m
Application	Power, Wire-to-Board, Automotive
Component Type	PCB Header
Product Name	MX150
UPC	800756810799

### Electrical

Current - Maximum per Contact	17.0A
Voltage - Maximum	500V DC

### Physical

Breakaway	No
Circuits (Loaded)	20
Circuits (maximum)	20
Color - Resin	Black
Durability (mating cycles max)	25
First Mate / Last Break	No
Glow-Wire Capable	No
Guide to Mating Part	No
Keying to Mating Part	None

Lock to Mating Part	None
Material - Metal	Brass
Material - Plating Mating	Gold
Material - Plating Termination	Tin
Material - Resin	High Temperature Thermoplastic
Net Weight	5.173/g
Number of Rows	2
Orientation	Vertical
Packaging Type	Tube
PC Tail Length	3.05mm
PCB Locator	No
PCB Retention	None
PCB Thickness - Recommended	1.57mm
Pitch - Mating Interface	3.50mm
Pitch - Termination Interface	3.50mm
Plating min - Mating	0.762µm
Polarized to Mating Part	No
Polarized to PCB	No
Shrouded	No
Temperature Range - Operating	-40° to +125°C
Termination Interface Style	Through Hole

### Solder Process Data

Max-Duration	5
Lead-Free Process Capability	WAVE
Max-Cycle	1
Max-Temp	245

---

### Mates With / Use With

#### Mates with Part(s)

Description	Part Number
MX150 Mat-Sealed Dual Row Female Connector Assemblies	<u>33472</u>

---

---

This document was generated on Dec 24, 2024