

2356631-2 ✓ ACTIVE

AMP | Superseal Pro

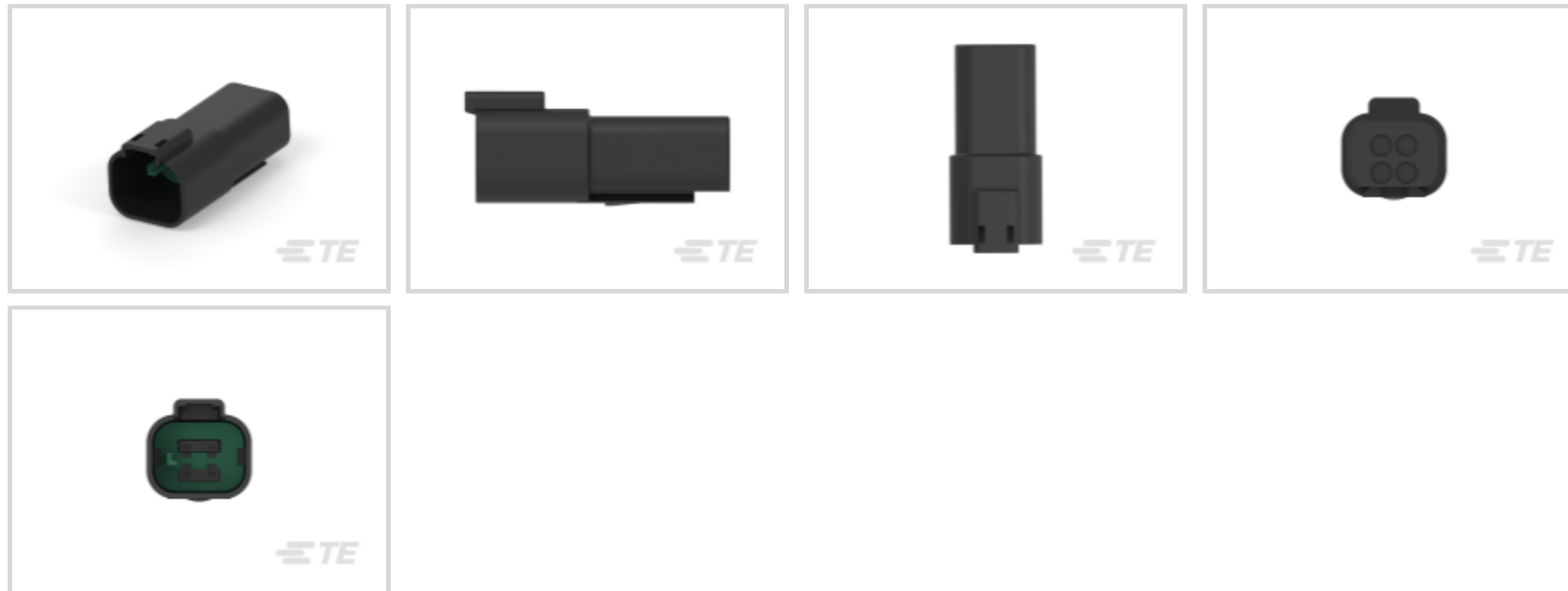
TE Internal #: 2356631-2

Housing for Male Terminals, Wire-to-Wire, 4 Position, 5 mm [.197 in] Centerline, Sealable, Black, Wire & Cable, Power, Superseal Pro

[View on TE.com >](#)



Connectors > Automotive Connectors > Automotive Housings



Connector System: **Wire-to-Wire**

Number of Positions: **4**

Connector & Housing Type: **Housing for Male Terminals**

Centerline (Pitch): **5 mm [.197 in]**

Sealable: **Yes**

Features

Product Type Features

Connector System	Wire-to-Wire
Connector & Housing Type	Housing for Male Terminals
Sealable	Yes
Connector & Contact Terminates To	Wire & Cable
Primary Locking Feature	Integrated in Housing
Connector Shape	Rectangular
Mixed & Hybrid Connector	No

Configuration Features

Number of Positions	4
Number of Rows	2

Housing Features

Centerline (Pitch)	5 mm [.197 in]
Housing Material	PBT GF

Contact Features



Mating Tab Width	1.2 mm[.047 in]
Contact Size	1.2mm
Contact Type	Tab

Body Features

Primary Product Color	Black
Connector & Keying Code	B

Operation/Application

Circuit Application	Power
---------------------	-------

Mechanical Attachment

Connector Mounting Type	Cable Mount (Free-Hanging)
Mating Alignment Type	Keyed
Mating Alignment	With

Usage Conditions

Operating Temperature (Max)	125 °C[257 °F]
Operating Temperature Range	-40 – 125 °C[-40 – 257 °F]

Electrical Characteristics

Nominal Voltage Architecture	12 V
------------------------------	------

Other

Connector Position Assurance Capable	No
EU RoHS Compliance	Compliant
EU ELV Compliance	Compliant

Product Compliance

For compliance documentation, visit the product page on [TE.com](https://www.te.com)>

EU RoHS Directive 2011/65/EU	Compliant
EU ELV Directive 2000/53/EC	Compliant
China RoHS 2 Directive MIIT Order No 32, 2016	No Restricted Materials Above Threshold
EU REACH Regulation (EC) No. 1907/2006	Current ECHA Candidate List: JUNE 2024 (241) Candidate List Declared Against: JUNE 2024 (241) Does not contain REACH SVHC
Halogen Content	Not Low Halogen - contains Br or Cl > 900 ppm.



Solder Process Capability

Not reviewed for solder process capability

Product Compliance Disclaimer

This information is provided based on reasonable inquiry of our suppliers and represents our current actual knowledge based on the information they provided. This information is subject to change. The part numbers that TE has identified as EU RoHS compliant have a maximum concentration of 0.1% by weight in homogenous materials for lead, hexavalent chromium, mercury, PBB, PBDE, DBP, BBP, DEHP, DIBP, and 0.01% for cadmium, or qualify for an exemption to these limits as defined in the Annexes of Directive 2011/65/EU (RoHS2). Finished electrical and electronic equipment products will be CE marked as required by Directive 2011/65/EU. Components may not be CE marked. Additionally, the part numbers that TE has identified as EU ELV compliant have a maximum concentration of 0.1% by weight in homogenous materials for lead, hexavalent chromium, and mercury, and 0.01% for cadmium, or qualify for an exemption to these limits as defined in the Annexes of Directive 2000/53/EC (ELV). Regarding the REACH Regulation, the information TE provides on SVHC in articles for this part number is based on the latest European Chemicals Agency (ECHA) 'Guidance on requirements for substances in articles' posted at this URL: <https://echa.europa.eu/guidance-documents/guidance-on-reach>

Compatible Parts



TE Part # 963143-1
MQS BLINDSTOPFEN



TE Part # CAT-M4595-T273
MCON Receptacle and Tab




TE Part # 2356607-2
4POS,MCON 1.2,REC HSG ASSY,SLD, COD B


Also in the Series | Superseal Pro




Automotive Connector Caps & Covers (3)




Automotive Housings(91)



Connector Backshells(13)



Connector Caps & Covers(1)



Other Automotive Connector Accessories(1)

Customers Also Bought



TE Part #2-330648-1
PIDG 22-16 22-18 MIL R 4; TAPE



TE Part #788189-2
CPC 17-3 RCPT ASY,REV SEX



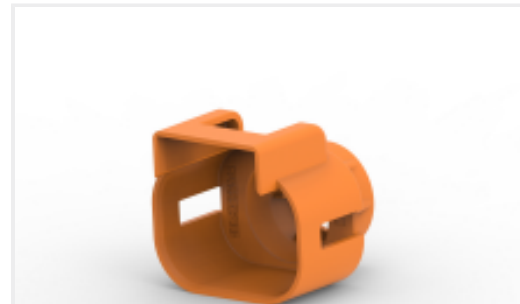
TE Part #2177090-3
STEEL, OUTER FERRULE, 8MM HV,
25SQMM



TE Part #1-1633961-2
CRIMPER, INSULATION F PREMIUM
25SQMM



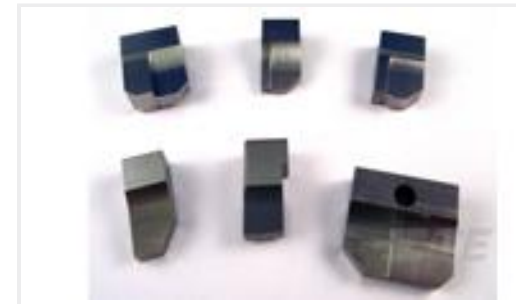
TE Part #1587940-3
CABLE SEAL RETAINER, SIZE C



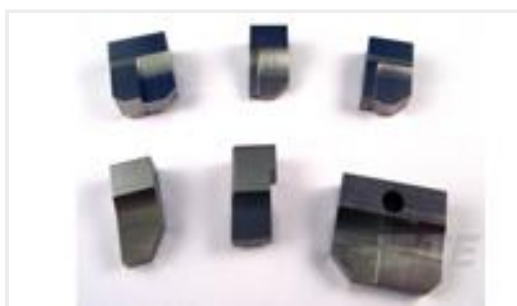
TE Part #2103013-3
CABLE SEAL RETAINER, SIZE 2, OR,
HVA280



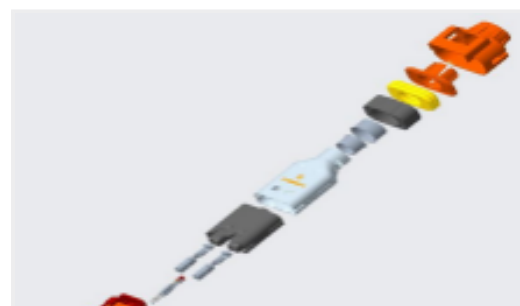
TE Part #2208669-3
8MM HV, CONTACT, ASSY



TE Part #4-1633932-0
ANVIL, COMBINATION



TE Part #464291-5
ANVIL, SAND-BLASTED 12-10



TE Part #YHV280-2PM-P-4MM-B
HVA280-2pnm, pass, 4sqmm, Key B

Documents

Product Drawings

[4POS,MCON 1.2,TAB HSG ASSY,SLD,COD B](#)

English

[4POS,MCON 1.2,TAB HSG ASSY,SLD,COD B](#)

English

CAD Files

[3D PDF](#)

3D

Customer View Model

[ENG_CVM_CVM_2356631-2_C.2d_dxf.zip](#)

English

Customer View Model

[ENG_CVM_CVM_2356631-2_C.3d_igs.zip](#)

English

Customer View Model

[ENG_CVM_CVM_2356631-2_C.3d_stp.zip](#)

English

By downloading the CAD file I accept and agree to the [Terms and Conditions](#) of use.



Product Specifications

Application Specification

English

Application Specification

English