

2112166-1 ✓ ACTIVE

AMP | LEAVYSEAL

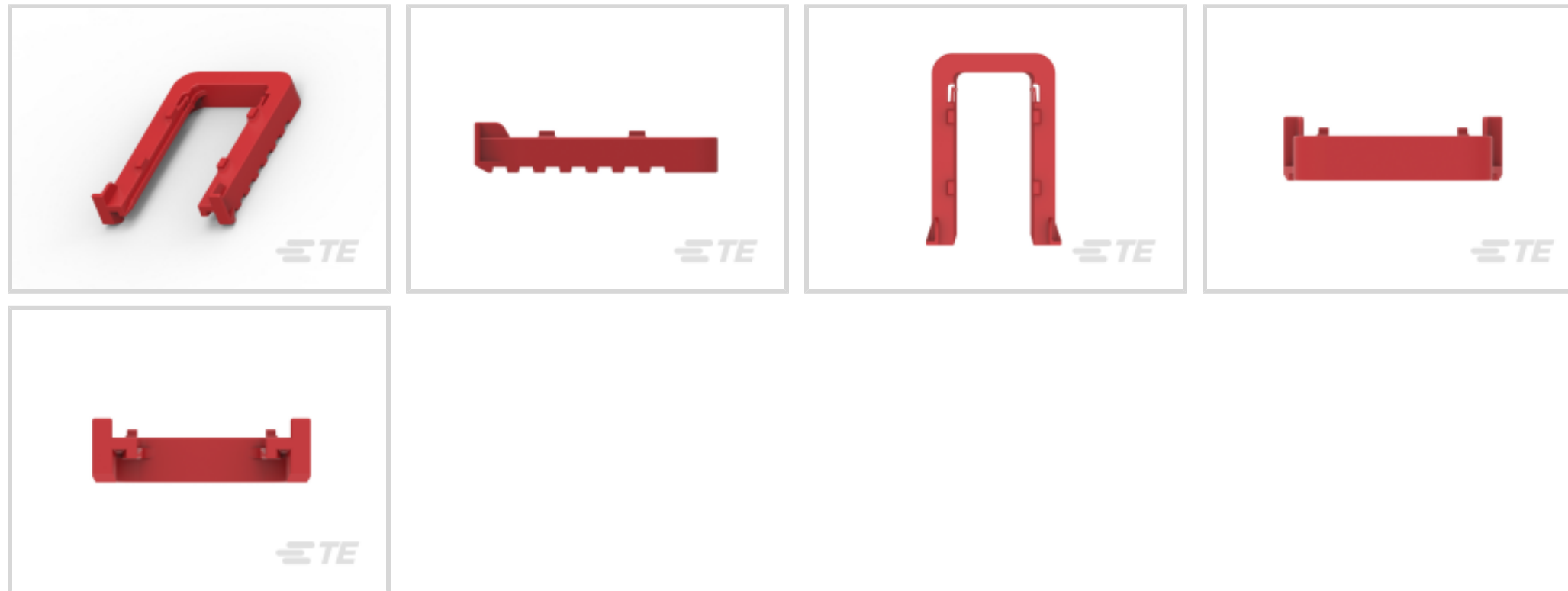
TE Internal #: 2112166-1

Mounting Clip, PA GF, Red, -40 – 130 °C [-40 – 266 °F], LEAVYSEAL,
Other Automotive Connector Accessories

[View on TE.com >](#)



Connectors > Automotive Connectors > Automotive Connector Accessories > Other Automotive Connector Accessories > LEAVYSEAL Locking Slides



Automotive Connector Accessory Type: **Mounting Clip**

Primary Product Material: **PA GF**

Primary Product Color: **Red**

Operating Temperature Range: **-40 – 130 °C [-40 – 266 °F]**

EU RoHS Compliance: **Compliant**

[All LEAVYSEAL Locking Slides \(7\)](#)

Features

Product Type Features

Automotive Connector Accessory Type	Mounting Clip
-------------------------------------	---------------

Body Features

Primary Product Material	PA GF
--------------------------	-------

Primary Product Color	Red
-----------------------	-----

Usage Conditions

Operating Temperature Range	-40 – 130 °C[-40 – 266 °F]
-----------------------------	----------------------------

Compatible With Connector Style	Housing For Male Terminals
---------------------------------	----------------------------

Other

EU RoHS Compliance	Compliant
--------------------	-----------

EU ELV Compliance	Compliant
-------------------	-----------

Serviceable	Yes
-------------	-----

Industry Standards

UL Flammability Rating	UL 94V-0
------------------------	----------



Packaging Features

Packaging Method	Box
Packaging Quantity	750

Product Compliance

[For compliance documentation, visit the product page on TE.com>](#)

EU RoHS Directive 2011/65/EU	Compliant
EU ELV Directive 2000/53/EC	Compliant
China RoHS 2 Directive MIIT Order No 32, 2016	No Restricted Materials Above Threshold
EU REACH Regulation (EC) No. 1907/2006	Current ECHA Candidate List: JUNE 2024 (241) Candidate List Declared Against: JUNE 2024 (241) Does not contain REACH SVHC
Halogen Content	BFR/CFR/PVC Free, but Br/Cl >900 ppm in other sources.
Solder Process Capability	Not applicable for solder process capability

Product Compliance Disclaimer

This information is provided based on reasonable inquiry of our suppliers and represents our current actual knowledge based on the information they provided. This information is subject to change. The part numbers that TE has identified as EU RoHS compliant have a maximum concentration of 0.1% by weight in homogenous materials for lead, hexavalent chromium, mercury, PBB, PBDE, DBP, BBP, DEHP, DIBP, and 0.01% for cadmium, or qualify for an exemption to these limits as defined in the Annexes of Directive 2011/65/EU (RoHS2). Finished electrical and electronic equipment products will be CE marked as required by Directive 2011/65/EU. Components may not be CE marked. Additionally, the part numbers that TE has identified as EU ELV compliant have a maximum concentration of 0.1% by weight in homogenous materials for lead, hexavalent chromium, and mercury, and 0.01% for cadmium, or qualify for an exemption to these limits as defined in the Annexes of Directive 2000/53/EC (ELV). Regarding the REACH Regulation, the information TE provides on SVHC in articles for this part number is based on the latest European Chemicals Agency (ECHA) 'Guidance on requirements for substances in articles' posted at this URL: <https://echa.europa.eu/guidance-documents/guidance-on-reach>

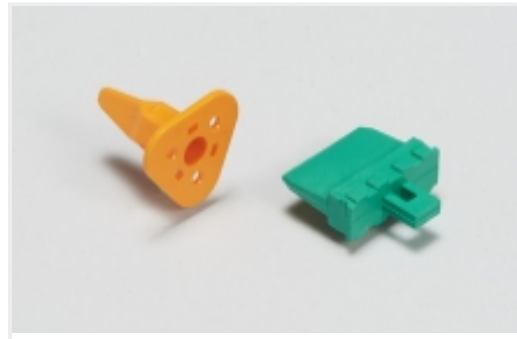
Compatible Parts



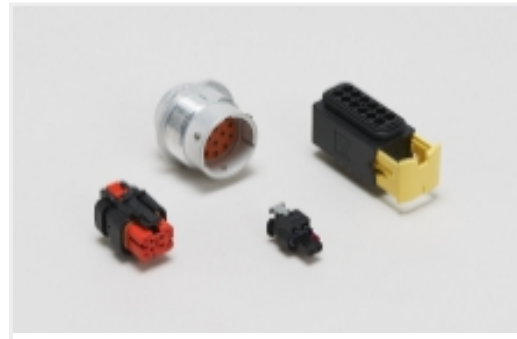
Also in the Series | **LEAVYSEAL**



Automotive Connector Caps & Covers (19)



Automotive Connector Locks & Position Assurance(4)



Automotive Housings(91)



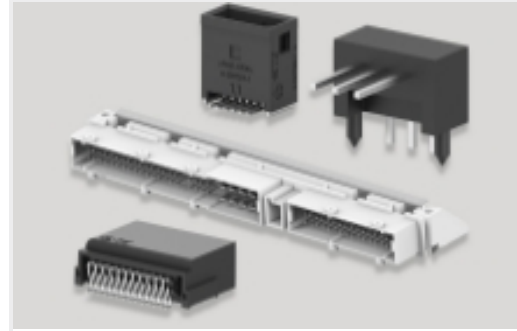
Connector Caps & Covers(1)



Insertion & Extraction Tools(5)

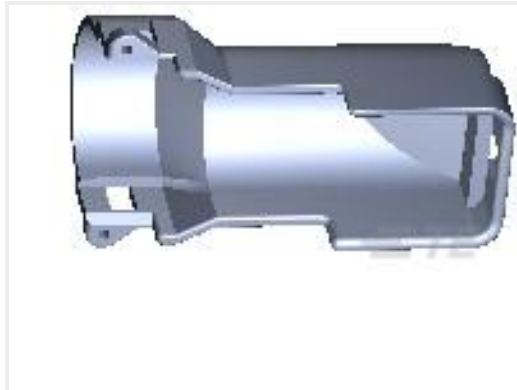


Other Automotive Connector Accessories(15)



PCB Headers & Receptacles(17)

Customers Also Bought



TE Part #9-1394050-1
COVER F.21P REC-HSG



TE Part #1703810-6
SLIDE,TAB HSG GROUP B



TE Part #2-1564518-1
10POS, MIXED,TAB HSG,ASSY



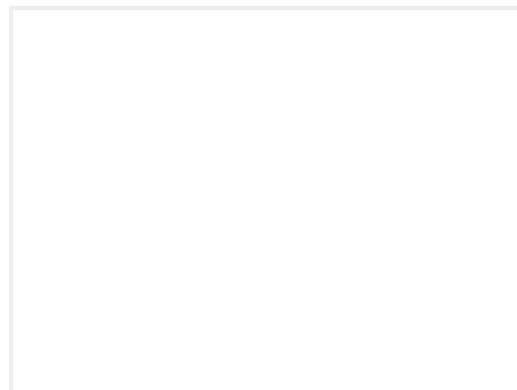
TE Part #HDC16-3-JDL
DUST CAP, 3P, REC, GRY, LANYARD, HD10



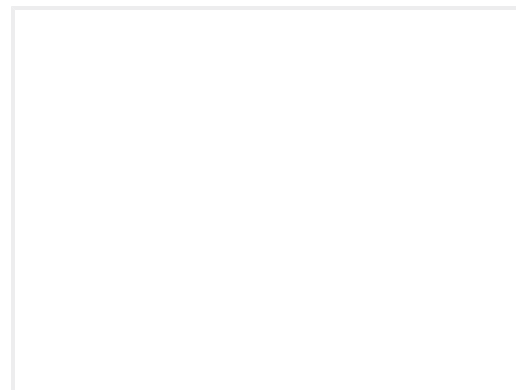
TE Part #2112166-3
SLIDE,FOR 21POS.



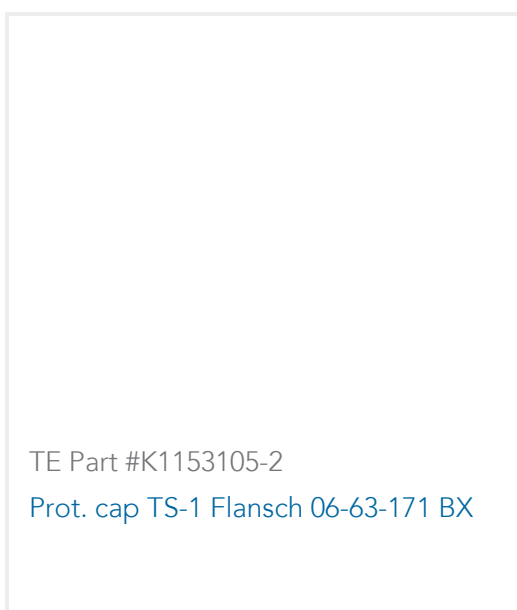
TE Part #1-2322190-1
18POS,AMP MCP 2.8,REC HSG ASSY, COD A



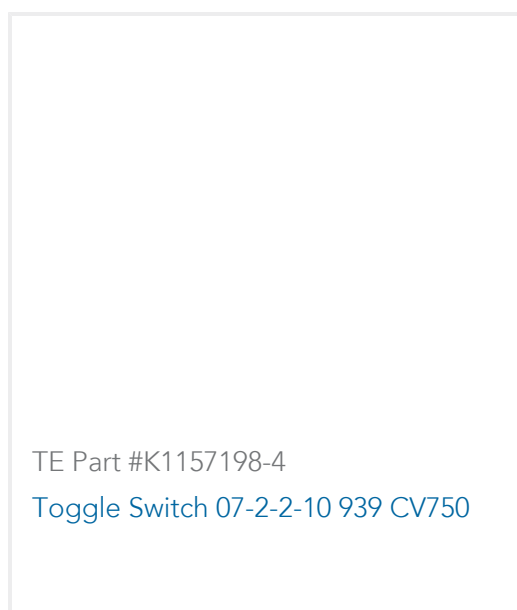
TE Part #87805-000
PSS-X1379B WITH BRACKET



TE Part #10218545-00
PSS-X1541A, VANE SENSOR



TE Part #K1153105-2
Prot. cap TS-1 Flansch 06-63-171 BX



TE Part #K1157198-4
Toggle Switch 07-2-2-10 939 CV750

Documents



Product Drawings

[SLIDE, FOR 21 POS.](#)

English

CAD Files

Customer View Model

[ENG_CVM_CVM_2112166-1_A.2d_dxf.zip](#)

English

3D PDF

3D

Customer View Model

[ENG_CVM_CVM_2112166-1_A.3d_igs.zip](#)

English

Customer View Model

[ENG_CVM_CVM_2112166-1_A.3d_stp.zip](#)

English

By downloading the CAD file I accept and agree to the [Terms and Conditions](#) of use.

Datasheets & Catalog Pages

[LEAVYSEAL CONNECTORS](#)

English

[CONNECTOR SELECTOR](#)

English

Product Specifications

[Application Specification](#)

German