



SL-156

TE Internal #: 1-770849-5

Housing, Receptacle, Wire-to-Board, 15 Position, 3.96 mm [.156 in]
Centerline, Crimp, 1 Row, Natural, Mating Retention, Wire & Cable,
SL-156

[View on TE.com >](#)

Connectors > PCB Connectors > Wire-to-Board Connectors > Wire-to-Board Connector Assemblies & Housings >

Receptacle Housing: Wire-to-Board, with Mating Alignment, SL156



Connector Product Type: **Housing**

Connector & Housing Type: **Receptacle**

Connector System: **Wire-to-Board**

Number of Positions: **15**

Centerline (Pitch): **3.96 mm [.156 in]**

[All Receptacle Housing: Wire-to-Board, with Mating Alignment, SL156 \(107\)](#)

Features

Dimensions

	2.34 in
Wire Size	30 – 18 AWG

Product Type Features

Connector Product Type	Housing
Connector & Housing Type	Receptacle
Connector System	Wire-to-Board
Sealable	No
Connector & Contact Terminates To	Wire & Cable

Configuration Features

Number of Positions	15
Number of Rows	1



Housing Features

Centerline (Pitch)	3.96 mm [.156 in]
Housing Material	Nylon - GF

Termination Features

Termination Method to Wire & Cable	Crimp
------------------------------------	-------

Body Features

Primary Product Color	Natural
-----------------------	---------

Mechanical Attachment

Mating Retention	With
Connector Mounting Type	Cable Mount (Free-Hanging)
Strain Relief	Without
Panel Mount Feature	Without
Mating Retention Type	Locking Ramp
PCB Mount Alignment	Without
PCB Mount Retention	Without

Contact Features

Contact Current Rating (Max)	6.5 A
Contact Layout	Inline
Contact Retention Within Housing	Without
Contact Type	Socket

Operation/Application

Circuit Application	Power & Signal
---------------------	----------------

Usage Conditions

Operating Temperature Range	-55 – 105 °C [-67 – 221 °F]
-----------------------------	-----------------------------

Other

EU RoHS Compliance	Compliant
EU ELV Compliance	Compliant

Electrical Characteristics

Operating Voltage	250 VAC
-------------------	---------

Industry Standards

Compatible With Agency/Standards Products	UL, CSA
---	---------



UL Flammability Rating

UL 94V-0

Packaging Features

Packaging Method	Package
Packaging Quantity	1

Product Compliance

[For compliance documentation, visit the product page on TE.com>](#)

EU RoHS Directive 2011/65/EU	Compliant
EU ELV Directive 2000/53/EC	Compliant
China RoHS 2 Directive MIIT Order No 32, 2016	No Restricted Materials Above Threshold
EU REACH Regulation (EC) No. 1907/2006	Current ECHA Candidate List: JUNE 2024 (241) Candidate List Declared Against: JUNE 2024 (241) Does not contain REACH SVHC
Halogen Content	Low Halogen - Br, Cl, F, I < 900 ppm per homogenous material. Also BFR/CFR/PVC Free
Solder Process Capability	Not applicable for solder process capability

Product Compliance Disclaimer

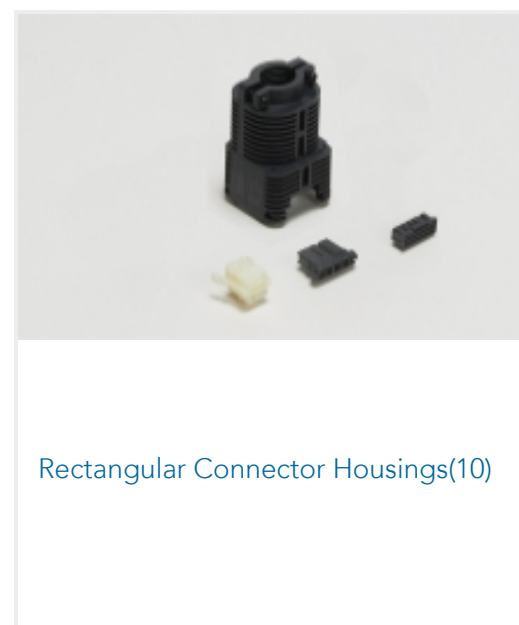
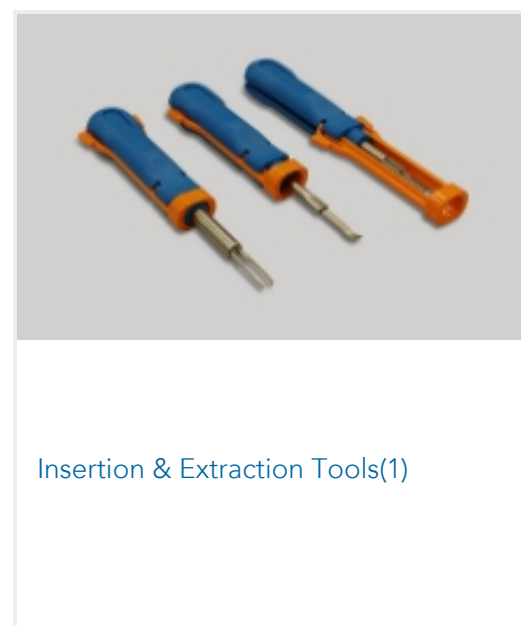
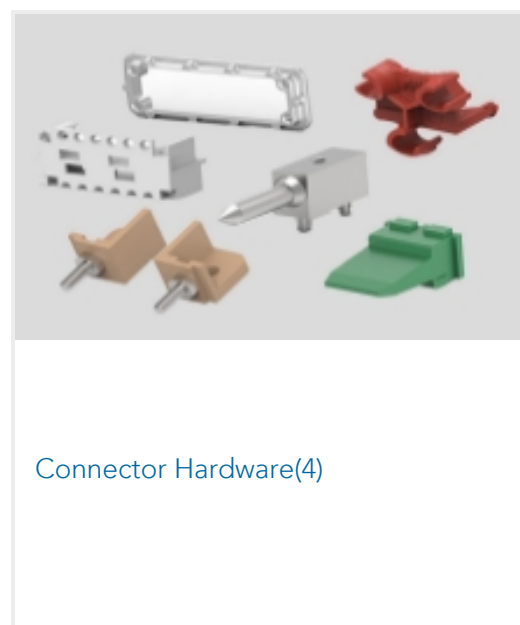
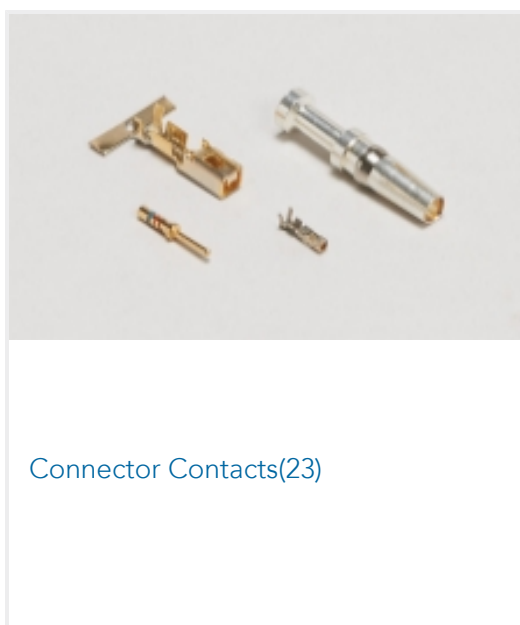
This information is provided based on reasonable inquiry of our suppliers and represents our current actual knowledge based on the information they provided. This information is subject to change. The part numbers that TE has identified as EU RoHS compliant have a maximum concentration of 0.1% by weight in homogenous materials for lead, hexavalent chromium, mercury, PBB, PBDE, DBP, BBP, DEHP, DIBP, and 0.01% for cadmium, or qualify for an exemption to these limits as defined in the Annexes of Directive 2011/65/EU (RoHS2). Finished electrical and electronic equipment products will be CE marked as required by Directive 2011/65/EU. Components may not be CE marked. Additionally, the part numbers that TE has identified as EU ELV compliant have a maximum concentration of 0.1% by weight in homogenous materials for lead, hexavalent chromium, and mercury, and 0.01% for cadmium, or qualify for an exemption to these limits as defined in the Annexes of Directive 2000/53/EC (ELV). Regarding the REACH Regulation, the information TE provides on SVHC in articles for this part number is based on the latest European Chemicals Agency (ECHA) 'Guidance on requirements for substances in articles' posted at this URL: <https://echa.europa.eu/guidance-documents/guidance-on-reach>

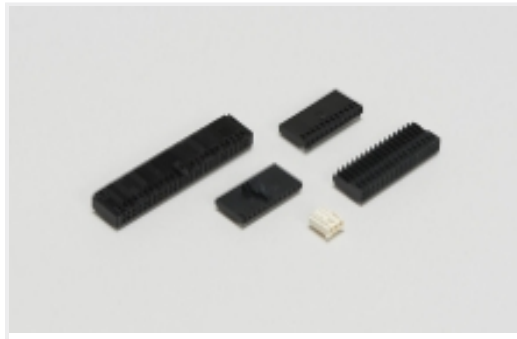
Compatible Parts





Also in the Series | **SL-156**





Wire-to-Board Connector Assemblies & Housings(140)

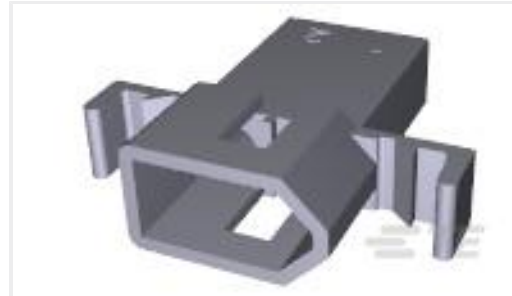
Customers Also Bought



TE Part #770849-7
Receptacle Housing: Wire-to-Board, with Mating Alignment, SL156



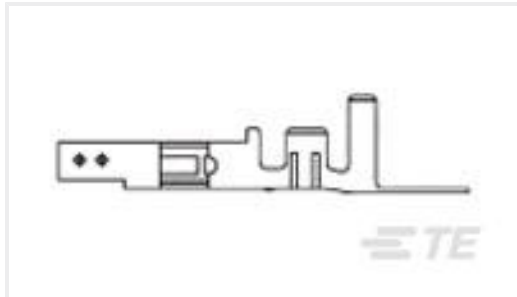
TE Part #521282-2
ULTRA-POD 250 ASSY REC 18-14 AWG TPBR



TE Part #770068-1
02P .093 COMM P&S PLUG .248CL



TE Part #770529-1
.093 COMM P&S SOK 14-20 PTPBR



TE Part #794956-5
VAL-U-LOK SKT BR SN 18-22AWG



TE Part #61769-1
SPLICE 1200-2600 .020 BR



TE Part #520988-1
ULTRA-POD 250 ASSY REC 22-18 AWG BR

Documents

CAD Files

3D PDF

3D

Customer View Model

[ENG_CVM_CVM_1-770849-5_Z_c-1-770849-5-z.2d_dxf.zip](#)

English

Customer View Model

[ENG_CVM_CVM_1-770849-5_Z_c-1-770849-5-z.3d_igs.zip](#)

English

Customer View Model

[ENG_CVM_CVM_1-770849-5_Z_c-1-770849-5-z.3d_stp.zip](#)

English

By downloading the CAD file I accept and agree to the [Terms and Conditions](#) of use.

Product Specifications

Application Specification

English

1-770849-5

Housing, Receptacle, Wire-to-Board, 15 Position, 3.96 mm [.156 in] Centerline, Crimp,
1 Row, Natural, Mating Retention, Wire & Cable, SL-156



[Agency Approvals](#)

[UL Report](#)

English