

5-1747257-3 ✓ ACTIVE

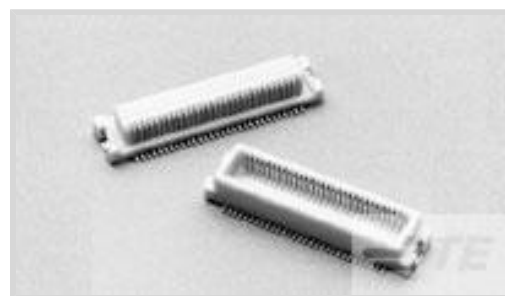
TE Internal #: 5-1747257-3

PCB Mount Header, Right Angle, Board-to-Board, 80 Position, .5 mm [.02 in] Centerline, Gold, Surface Mount, Signal, Black, Tape & Reel

[View on TE.com >](#)



Connectors > PCB Connectors > PCB Headers & Receptacles



EU RoHS Compliance: **Compliant**

EU ELV Compliance: **Compliant**

PCB Connector Assembly Type: **PCB Mount Header**

PCB Mount Orientation: **Right Angle**

Connector System: **Board-to-Board**

Features

Other

EU RoHS Compliance	Compliant
EU ELV Compliance	Compliant

Product Type Features

PCB Connector Assembly Type	PCB Mount Header
Connector System	Board-to-Board
Sealable	No
Connector & Contact Terminates To	Printed Circuit Board

Configuration Features

Stackable	Yes
PCB Mount Orientation	Right Angle
Number of Positions	80

Electrical Characteristics

Operating Voltage	250 VAC
Insulation Resistance	2 MΩ
Dielectric Withstanding Voltage (Max)	500 VAC

Body Features

Connector Profile	Low
Primary Product Color	Black



Contact Features

Contact Mating Area Plating Material Thickness	.05 μm [2 μin]
PCB Contact Termination Area Plating Material Thickness	.05 – .127 μm [2 – 5 μin]
Contact Shape & Form	Square
Contact Layout	Inline
Contact Base Material	Copper Alloy
PCB Contact Termination Area Plating Material	Gold
Contact Mating Area Plating Material	Gold
Contact Type	Tab
Contact Current Rating (Max)	.5 A

Termination Features

Rectangular Termination Post & Tail Width	.6 mm[.023 in]
Rectangular Termination Post & Tail Thickness	.2 mm[.008 in]
Termination Method to PCB	Surface Mount

Mechanical Attachment

Mating Alignment Type	Keyed
PCB Mount Retention Type	None
PCB Mount Alignment Type	Locating Posts
PCB Mount Retention	Without
PCB Mount Alignment	With
Connector Mounting Type	Board Mount
Mating Alignment	With

Housing Features

Housing Material	High heat-resisted resin
Centerline (Pitch)	.5 mm[.02 in]

Dimensions

Stack Height	4 mm, 4.5 mm, 5.5 mm[.157 in][.177 in][.217 in]
Connector Height	4.75 mm[.187 in]

Usage Conditions

Housing Temperature Rating	High
Operating Temperature Range	-30 – 105 $^{\circ}\text{C}$ [-22 – 221 $^{\circ}\text{F}$]



Operation/Application

Assembly Process Feature	None
Circuit Application	Signal

Industry Standards

UL Flammability Rating	UL 94V-0
------------------------	----------

Packaging Features

Packaging Quantity	1000
Packaging Method	Tape & Reel

Product Compliance

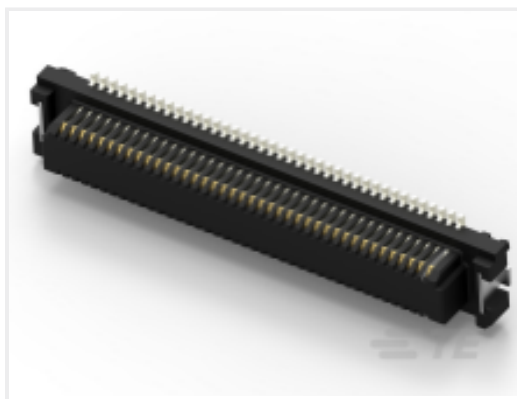
[For compliance documentation, visit the product page on TE.com>](#)

EU RoHS Directive 2011/65/EU	Compliant
EU ELV Directive 2000/53/EC	Compliant
China RoHS 2 Directive MIIT Order No 32, 2016	No Restricted Materials Above Threshold
EU REACH Regulation (EC) No. 1907/2006	Current ECHA Candidate List: JUNE 2024 (241) Candidate List Declared Against: JUNE 2024 (241) Does not contain REACH SVHC
Halogen Content	Not Low Halogen - contains Br or Cl > 900 ppm.
Solder Process Capability	Reflow solder capable to 245°C

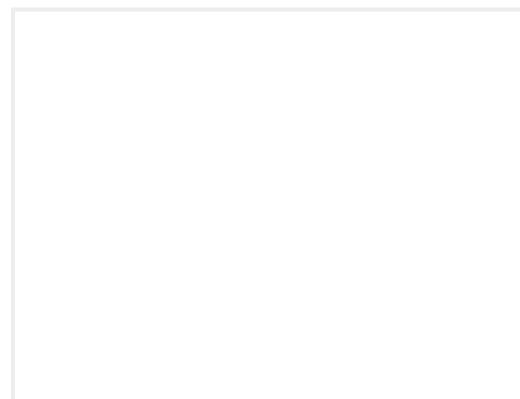
Product Compliance Disclaimer

This information is provided based on reasonable inquiry of our suppliers and represents our current actual knowledge based on the information they provided. This information is subject to change. The part numbers that TE has identified as EU RoHS compliant have a maximum concentration of 0.1% by weight in homogenous materials for lead, hexavalent chromium, mercury, PBB, PBDE, DBP, BBP, DEHP, DIBP, and 0.01% for cadmium, or qualify for an exemption to these limits as defined in the Annexes of Directive 2011/65/EU (RoHS2). Finished electrical and electronic equipment products will be CE marked as required by Directive 2011/65/EU. Components may not be CE marked. Additionally, the part numbers that TE has identified as EU ELV compliant have a maximum concentration of 0.1% by weight in homogenous materials for lead, hexavalent chromium, and mercury, and 0.01% for cadmium, or qualify for an exemption to these limits as defined in the Annexes of Directive 2000/53/EC (ELV). Regarding the REACH Regulation, the information TE provides on SVHC in articles for this part number is based on the latest European Chemicals Agency (ECHA) 'Guidance on requirements for substances in articles' posted at this URL: <https://echa.europa.eu/guidance-documents/guidance-on-reach>

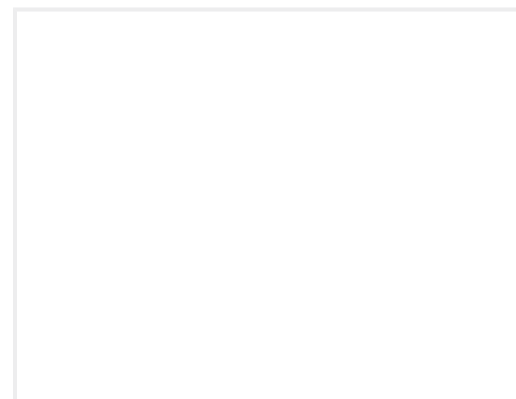
Compatible Parts



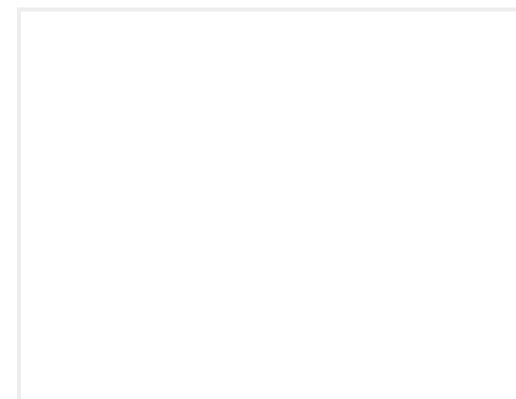
TE Part # 5-1747022-3
ON TAPING(EMBOSS) 0.5MM PITCH



TE Part # 1-179649-5
0.5 BTB TAB CONT H DURAGOLD/DL

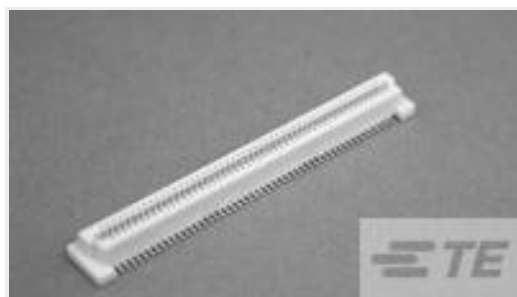


TE Part # 1-912059-4
COVER TAPE FOR 2.0 A-F CONN



TE Part # 5-912060-5
EMBOSS TAPE FOR 0.5 BTB 80P H

Customers Also Bought



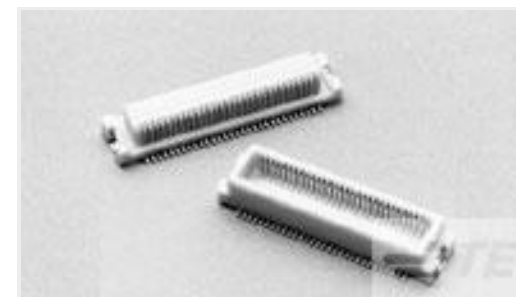
TE Part #5177985-3
0.8FH,R05H.5,080,08/Sn,TR,SC



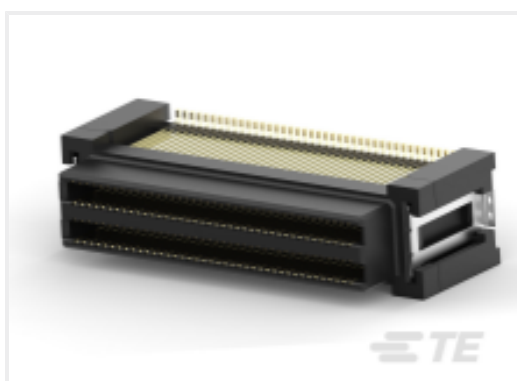
TE Part #6116075-1
INV MJ,1X1,SHIELDED,LED (G/Y)



TE Part #3-2229794-1
D3950 REC 3POS 1ROW X KEY
MARKED



TE Part #5-1747022-3
ON TAPING(EMBOSS) 0.5MM PITCH



TE Part #2305217-1
MICRO STACK REC ASSY 0.1 GOLD

Documents

Product Drawings

[ON TAPING\(EMBOSS\)0.5 FINE MATE](#)

English

CAD Files

[3D PDF](#)

English

Customer View Model

[ENG_CVM_5-1747257-3_O.2d_dxf.zip](#)

English

Customer View Model

[ENG_CVM_5-1747257-3_O.3d_igs.zip](#)

English

Customer View Model

[ENG_CVM_5-1747257-3_O.3d_stp.zip](#)

English

By downloading the CAD file I accept and agree to the [Terms and Conditions](#) of use.



Datasheets & Catalog Pages

[Fine Pitch Catalog - 0.5mm Fine Stack and Fine Mate Connectors](#)

English

Product Specifications

[0.5mm Pitch Fine Mate Conn.](#)

Japanese

[Product Specification](#)

Japanese

[Product Specification](#)

English

Instruction Sheets

[Instruction Sheet \(non U.S.\)](#)

English

[0.5/0.8MM PITCH FINE MATE CONN.](#)

English