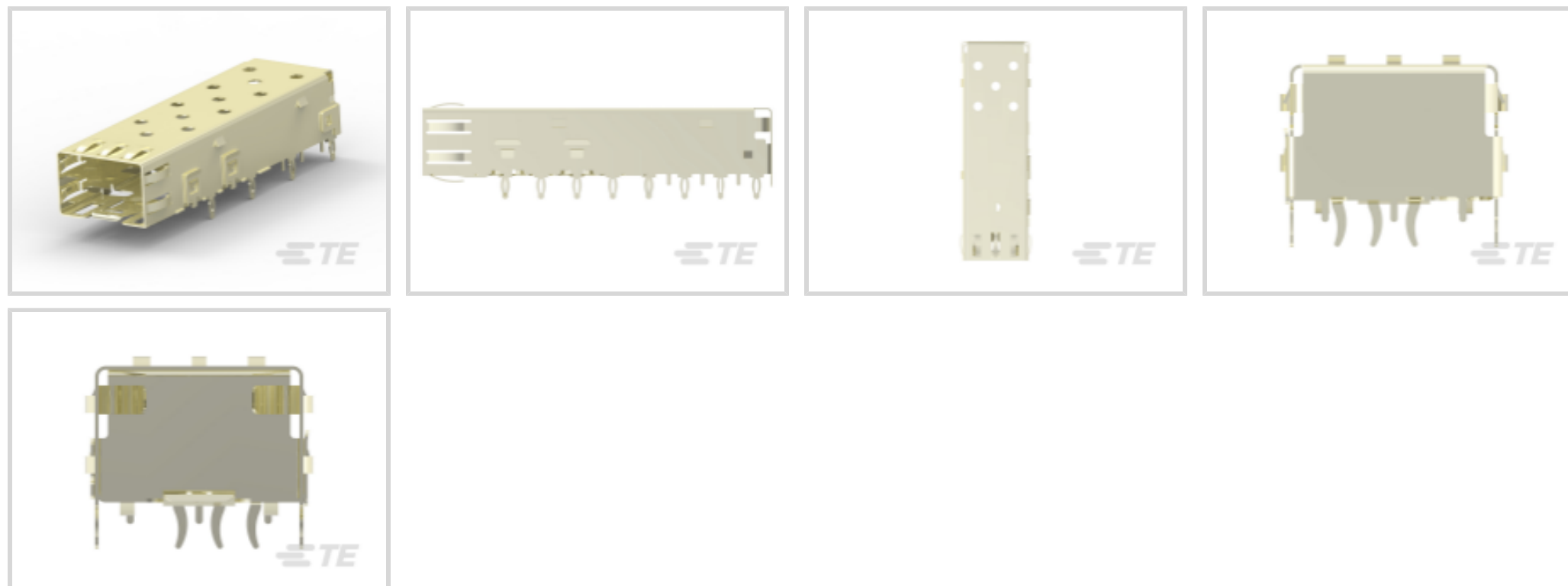




Connectors > Pluggable IO Connectors & Cages



Pluggable I/O Product Type: **Cage**

Sealable: **No**

Operating Temperature Range: **-55 – 85 °C [-67 – 185 °F]**

Data Rate (Max): **4 Gb/s**

Number of Ports: **1**

### Features

#### Product Type Features

Pluggable I/O Product Type	Cage
Sealable	No
Form Factor	SFP
Cage Type	Single

#### Usage Conditions

Operating Temperature Range	-55 – 85 °C[-67 – 185 °F]
-----------------------------	---------------------------

#### Electrical Characteristics

Data Rate (Max)	4 Gb/s
-----------------	--------

#### Configuration Features

Number of Ports	1
Port Matrix Configuration	1 x 1

#### Other

Included Lightpipe	No
EMI Containment Feature Type	Internal/External EMI Springs
EU RoHS Compliance	Compliant



EU ELV Compliance	Compliant
-------------------	-----------

### Termination Features

Termination Method to PCB	Through Hole - Press-Fit
Termination Post & Tail Length	3 mm[.118 in]

### Housing Features

Cage Material	Stainless Steel
---------------	-----------------

### Dimensions

PCB Thickness (Recommended)	1.5 mm[.059 in]
-----------------------------	-----------------

### Operation/Application

Pluggable I/O Applications	SFP
Heat Sink Compatible	No

### Packaging Features

Packaging Method	Box
------------------	-----

## Product Compliance

[For compliance documentation, visit the product page on TE.com>](#)

EU RoHS Directive 2011/65/EU	Compliant
EU ELV Directive 2000/53/EC	Compliant
China RoHS 2 Directive MIIT Order No 32, 2016	No Restricted Materials Above Threshold
EU REACH Regulation (EC) No. 1907/2006	Current ECHA Candidate List: JUNE 2024 (241) Candidate List Declared Against: JUNE 2024 (241) Does not contain REACH SVHC
Halogen Content	Low Halogen - Br, Cl, F, I < 900 ppm per homogenous material. Also BFR/CFR/PVC Free
Solder Process Capability	Not applicable for solder process capability

#### Product Compliance Disclaimer

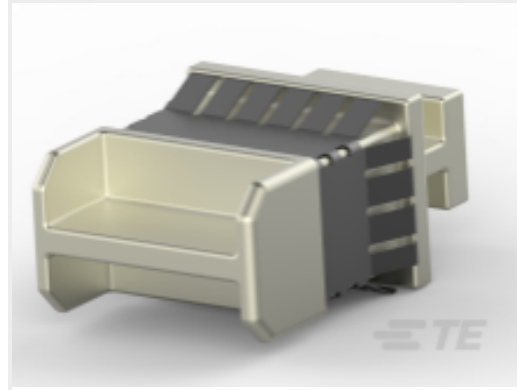
This information is provided based on reasonable inquiry of our suppliers and represents our current actual knowledge based on the information they provided. This information is subject to change. The part numbers that TE has identified as EU RoHS compliant have a maximum concentration of 0.1% by weight in homogenous materials for lead, hexavalent chromium, mercury, PBB, PBDE, DBP, BBP, DEHP, DIBP, and 0.01% for cadmium, or qualify for an exemption to these limits as defined in the Annexes of Directive 2011/65/EU (RoHS2). Finished electrical and electronic equipment products will be CE marked as required by Directive 2011/65/EU. Components may not be CE marked. Additionally, the part numbers that TE has identified as EU ELV compliant have a maximum concentration of 0.1% by weight in homogenous materials for lead, hexavalent chromium, and mercury, and 0.01% for cadmium, or qualify for an exemption to these limits as defined in the Annexes of Directive 2000/53/EC (ELV). Regarding the REACH Regulation, the information TE provides

on SVHC in articles for this part number is based on the latest European Chemicals Agency (ECHA) 'Guidance on requirements for substances in articles' posted at this URL: <https://echa.europa.eu/guidance-documents/guidance-on-reach>

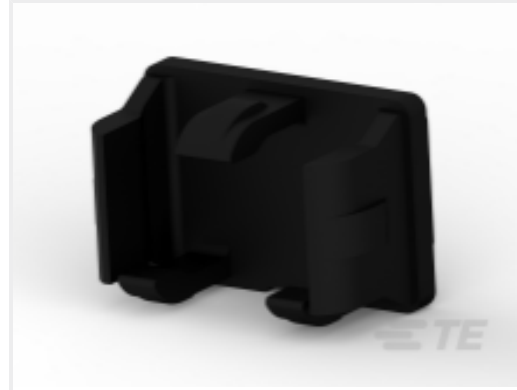
## Compatible Parts



TE Part # CAT-SF59-C76264  
SFP Connectors



TE Part # 1888901-1  
SFP+ EMI Plug



TE Part # 1367147-1  
SFP COVER, UNPLATED



TE Part # 1367147-3  
SFP COVER, UNPL, NO LOGO



TE Part # 1761394-1  
DUST COVER, SFP, GANGED & STACKED



TE Part # 2215077-3  
ASSY, SEATING TOOL, SFP

## Customers Also Bought



TE Part #1658628-2  
PRESS FIT 2X1 REDUCED PROFILE



TE Part #2199230-8  
M.2 0.5PITCH 4.2H KEY A 15U" AU"



TE Part #2299940-5  
ZQSFP+ STACKED REC ASSEMBLY 2X1,HS



TE Part #1367147-1  
SFP COVER, UNPLATED



TE Part #1934346-1  
Tin Man Header Assy 3x16 Double



TE Part #ADP-SMAF-TNCF-B  
SMA Jack to TNC Jack Bulkhead



TE Part #2198231-2  
SFP+ Enhanced 1x2, SAN Heatsink, LP



TE Part #2170773-4  
CAGE ASSY, QSFP28 1X1, QUAD, LP

## Documents

### Product Drawings

CAGE ASSY, PRESS FIT, SFP

English



### CAD Files

#### 3D PDF

3D

#### Customer View Model

[ENG\\_CVM\\_CVM\\_2227302-1\\_A.2d\\_dxf.zip](#)

English

#### Customer View Model

[ENG\\_CVM\\_CVM\\_2227302-1\\_A.3d\\_igs.zip](#)

English

#### Customer View Model

[ENG\\_CVM\\_CVM\\_2227302-1\\_A.3d\\_stp.zip](#)

English

By downloading the CAD file I accept and agree to the [Terms and Conditions](#) of use.

### Product Specifications

#### Application Specification

English