



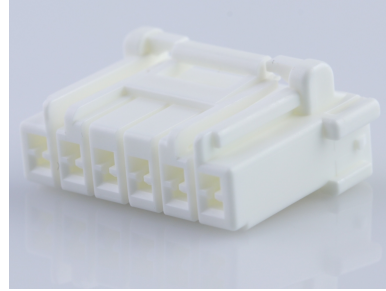
Part Number : [5046930600](#)

Product Description : CP-3.3 Receptacle Housing, 3.30mm Pitch, Single Row, Polarized, Positive Inertia Lock, 6 Circuits, Natural

Series Number : 504693

Status : Active

Product Category : Connector Housings



Documents & Resources

Drawings

[5046930600_sd.pdf](#)

3D Models and Design Files

[5046930600_stp.zip](#)

Specifications

[AS-504693-001-001.pdf](#)

[AS-504693-002-001.pdf](#)

[SPK-504693-001-001.pdf](#)

[PS-504693-001-001.pdf](#)

Product Environment Compliance

Compliance

GADSL/IMDS	Not Relevant
China RoHS	
EU ELV	Not Relevant
Low-Halogen Status	Not Low-Halogen per IEC 61249-2-21
REACH SVHC	Not Contained per D(2024)6225-DC (07 Nov 2024)
EU RoHS	Compliant per EU 2015/863

Multiple Part Product Compliance Statements

- Eu RoHS
- REACH SVHC
- Low-Halogen

Multiple Part Industry Compliance Documents

- IPC 1752A Class C
- IPC 1752A Class D
- Molex Product Compliance Declaration
- IEC-62474
- chemSHERPA (xml)

EU RoHS Certificate of Compliance

Part Details

General

Status	Active
Category	Connector Housings
Series	504693
Description	CP-3.3 Receptacle Housing, 3.30mm Pitch, Single Row, Polarized, Positive Inertia Lock, 6 Circuits, Natural
Application	Signal, Wire-to-Wire
Product Name	CP-3.3
UPC	887191484464

Agency

UL	E29179
----	--------

Physical

Circuits (maximum)	6
Color - Resin	Natural
Flammability	94V-0
Gender	Receptacle
Glow-Wire Capable	No
Keying to Mating Part	Yes
Lock to Mating Part	Yes
Material - Resin	PBT
Net Weight	1776.000/mg
Number of Rows	1
Packaging Type	Bag
Panel Mount	No

Pitch - Mating Interface	3.30mm
Pitch - Termination Interface	3.30mm
Polarized to Mating Part	Yes
Stackable	No
Temperature Range - Operating	-40° to +105°C

Mates With / Use With

Mates with Part(s)

Description	Part Number
CP-3.3 Plug Housing, 3.30mm Pitch, Single Row, Polarized, Positive Inertia Lock, 6 Circuits, Natural	<u>5046940600</u>

Use with Part(s)

Description	Part Number
CP-3.3 Terminal Position Assurance (TPA) Retainers	<u>504695</u>
CP-2.5 Mini and CP-3.3 Female Crimp Terminals	<u>50397</u>
CP-3.3 Wire-to-Wire Female Crimp Terminals	<u>505607</u>