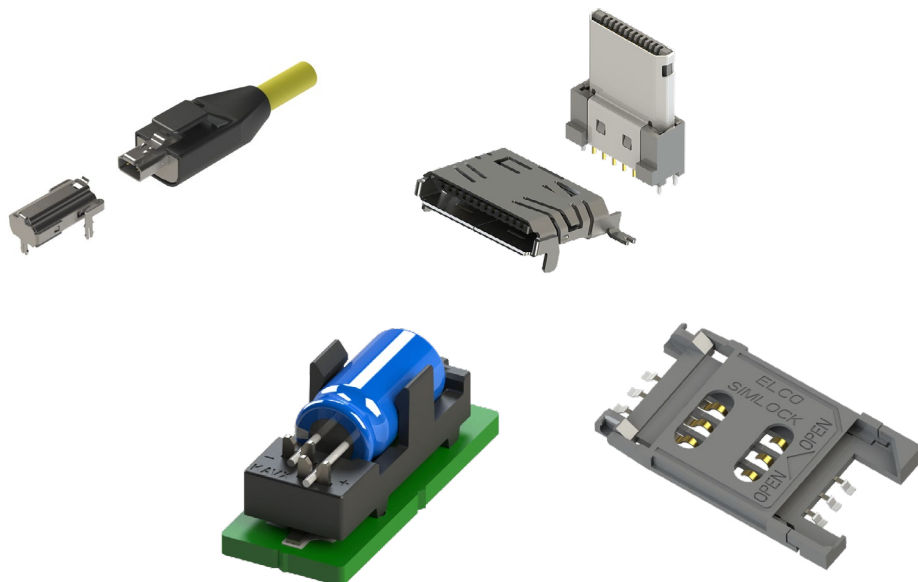




Specialty Connectors



IMPORTANT INFORMATION/DISCLAIMER

All product specifications, statements, information and data (collectively, the “Information”) in this datasheet or made available on the website are subject to change. The customer is responsible for checking and verifying the extent to which the Information contained in this publication is applicable to an order at the time the order is placed. All Information given herein is believed to be accurate and reliable, but it is presented without guarantee, warranty, or responsibility of any kind, expressed or implied.

Statements of suitability for certain applications are based on KYOCERA AVX knowledge of typical operating conditions for such applications, but are not intended to constitute and KYOCERA AVX specifically disclaims any warranty concerning suitability for a specific customer application or use.

ANY USE OF PRODUCT OUTSIDE OF SPECIFICATIONS OR ANY STORAGE OR INSTALLATION INCONSISTENT WITH PRODUCT GUIDANCE VOIDS ANY WARRANTY.

The Information is intended for use only by customers who have the requisite experience and capability to determine the correct products for their application. Any technical advice inferred from this Information or otherwise provided by KYOCERA AVX with reference to the use of KYOCERA AVX products is given without regard, and KYOCERA AVX assumes no obligation or liability for the advice given or results obtained.

Although KYOCERA AVX designs and manufactures its products to the most stringent quality and safety standards, given the current state of the art, isolated component failures may still occur. Accordingly, customer applications which require a high degree of reliability or safety should employ suitable designs or other safeguards (such as installation of protective circuitry or redundancies) in order to ensure that the failure of an electrical component does not result in a risk of personal injury or property damage.

Unless specifically agreed to in writing, KYOCERA AVX has not tested or certified its products, services or deliverables for use in high risk applications including medical life support, medical device, direct physical patient contact, water treatment, nuclear facilities, weapon systems, mass and air transportation control, flammable environments, or any other potentially life critical uses. Customer understands and agrees that KYOCERA AVX makes no assurances that the products, services or deliverables are suitable for any high-risk uses. Under no circumstances does KYOCERA AVX warrant or guarantee suitability for any customer design or manufacturing process.

Although all product-related warnings, cautions and notes must be observed, the customer should not assume that all safety measures are indicated or that other measures may not be required.

SPECIALTY CONNECTORS CATALOG



Table of Contents

SINGLE-PAIR ETHERNET (SPE) CONNECTOR

T1 Industrial Jack & Cable IP20: 6780-000	1
---	---

I/O CONNECTORS

Standard I/O, 15 Position: 9157-015	3
Standard I/O, 19 Position: 9157-019	4
Reduced Size I/O, 16 Position: 9257-000.....	5
Mini I/O, 12 Position: 9257-100.....	6

SIM CARD CONNECTORS

Sim Block: 9162-000	7
Slide-In SIM: 9162-200	8
Locking SIM: 9162-300	9
Slide-In Low Profile SIM: 9162-400	10
SIM/Micro SD Combination: 9162-500	11

SINGLE-PAIR ETHERNET (SPE) CONNECTOR

T1 Industrial Jack & Cable IP20: 6780-000



As the Industrial Ethernet market continues to grow, there is an increasing demand for smaller, faster connectors. Consequently, Single Pair Ethernet has emerged as a key topic of discussion. SPE describes transmitting Ethernet over only one pair of twisted copper wires. In addition to Ethernet data transmission, SPE enables simultaneous power supply to terminal devices via PoDL (Power over Data Line). Previously, two pairs were required for Fast Ethernet (100 MB) and four pairs for Gigabit Ethernet. SPE not only saves space and weight with fewer wires, but also transmits 1 GBit/s up to 40 meters. KYOCERA AVX is part of the SPE Industrial Partner Network and will offer SPE products that meet customer and market needs while adhering to IEC 63171-6 and IEEE 802.3 standards.

As a member of the SPE Industrial Partner Network, KYOCERA AVX will actively contribute to the ongoing development of SPE standards and compatible connectivity products. The company will also promote the significant space- and weight-saving advantages of SPE for applications in industrial, process, and building automation systems; smart city networks; and transportation systems.

APPLICATIONS

- Robotics
- Automation
- Sensor & actuator networks
- Control & monitoring cameras
- Smart grid
- Traffic control
- Transportation Smart Monitoring
- Product Specification: Refer to 210-01-253
- Application Notes: Refer to 210-01-254

FEATURES AND BENEFITS

- Improved performance over one single twisted pair of wires
- Simplified networks, eliminated gateways
- Industry standard acc. IEC 63171-6
- Transmission speeds from 10Mbit/s to 1Gbit/s
- Transmission ranges up to 1000 meters
- Reliable cold welded KYOCERA AVX IDC technology for signal wires for simple assembly process and easier automation of cabling process
- SMT solder tails for signal wires connection to the PCB

ELECTRICAL

- Current rating: 4 Amps @60°C
- Voltage rating: 60 VAC (RMS) or DC equivalent
- Voltage proof: 1000V DC (contact to contact) & 2250V DC (contact to shield)

ENVIRONMENTAL

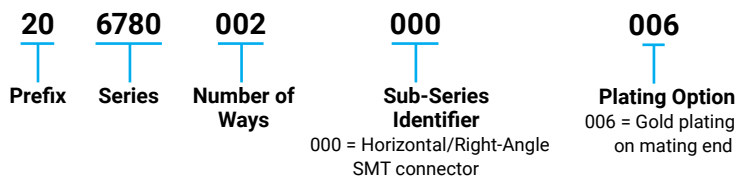
- Operating Temperature: -40°C to +85°C
- Storage Temperature: -40°C to +60°C
- IP degree protection: IP20

MECHANICAL

- Mating force: 20N max
- Durability: 1000 cycles / MPL1000
- Polarization force: 50N min
- Pull out force: 20N min

SPE IP20 Product performances comply with IEC 63171-6 requirements

HOW TO ORDER – T1 INDUSTRIAL JACK IP20



SALES DRAWINGS
CLICK TO DOWNLOAD

HOW TO ORDER – T1 INDUSTRIAL CABLE ASSEMBLY IP20



Code	Application	Tolerance (mm)
010	1 Meter	+40/-0
030	3 Meters	+40/-0
050	5 Meters	+40/-0
100	10 Meters	±100

Other lengths available upon request

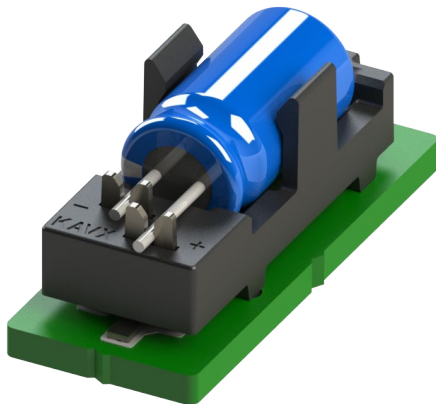


The Important Information/Disclaimer is incorporated in the catalog where these specifications came from or available online at www.kyocera-avx.com/disclaimer/ by reference and should be reviewed in full before placing any order.

SMT CAPACITOR HOLDER: 9115-000



General Description



KYOCERA AVX continues to think outside the box and push the boundaries of the connector market. Our 9115 series of SMT capacitor holders allows manufacturers to eliminate hand soldering and improve production efficiency. Utilizing our proven insulation displacement (IDC) technology, we are able to safely and efficiently connect a capacitor to the PCB without the need for manual processes.

The 9115 Series SMT Cap Holder is packed with key features that provide significant functionality in a wide range of applications. Compatible with a vast array of capacitors from 6.3mm to 10mm in diameter, the housing allows the capacitor to be secured to the PCB after the SMT process. Simply run the holder through the SMT process, snap the capacitor into the holder, and simultaneously terminate the leads via the IDCs without soldering or bending the leads. This assembly process can be fully automated. In addition, the 9115 Series allows the PCB to be populated under the holder with 1mm clearance for smaller components.

APPLICATIONS

Provides ruggedized connection of electrolytic capacitors and SuperCaps for various industries

- Automotive
- Industrial
- Medical
- Application Notes: Refer to 201-01-241
- Product Specification: Refer to 201-01-242

FEATURES AND BENEFITS

- Automated pick&place and reflow compatible
- High temperature insulator material, UL94 V0 halogen free
- Allows full automation for connecting a capacitor to a PCB
- Compatible with a wide range of cylindrical capacitors from 6.3 to 10mm in diameter
- 1mm clearance allows for populating the PCB with smaller components

ELECTRICAL

- Current Rating: Up to 10A Amps
- Voltage Rating: 500 VAC (RMS) or DC equivalent

Ratings are for the connector, see Capacitor Ratings

ENVIRONMENTAL

- Operating Temperature: -40°C to +125°C (Check Capacitor Limitations)
- Storage Temperature: -40°C to +60°C

MECHANICAL

- Insulator Material: Nylon UL94 V-0
- Contact Material: Phosphor Bronze
- Plating: Tin Over Nickel
- Vibration: Random 27.8 m/s² RMS
- Shock: 50g half sine

HOW TO ORDER

00	9115	002	X	X	X	X	X	6
Prefix	Series	Number of Ways	Capacitor Diameter	Capacitor Length	Capacitor Lead Pitch	Capacitor Lead Diameter	Locating Pegs	Plating
		2 = 002	2 = 6.3mm 3 = 8.0mm 4 = 10.0mm	1 = 12mm 3 = 20mm 5 = 30mm	1 = 2.3mm 2 = 2.5mm 3 = 3.2mm 4 = 3.5mm 5 = 3.8mm 6 = 5.0mm	1 = 0.50mm 2 = 0.60mm	0 = w/ pegs 1 = w/out pegs	Tin over Nickel



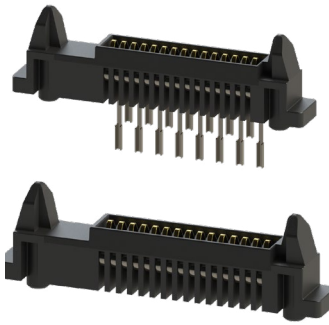
CURRENT AVAILABLE PART NUMBERS:

009115002211206	009115002315206
009115002211216	009115002315216
009115002212106	009115002333206
009115002212116	009115002333216
009115002313206	009115002334206
009115002313216	009115002334216
009115002314206	009115002334106
009115002314216	009115002334116
009115002314106	009115002456206
009115002314116	009115002456216

*Contact us for availability on other versions

I/O CONNECTORS

Standard I/O, 15 Position: 9157-015



The 9157 series was specifically designed for portable equipment.

KYOCERA AVX now offers this two-part system as a standard product. The fixed SMT socket is designed to be housed within the confined dimensional constraints of the portable device.

The plug/cover connector has sprung contacts and is designed for termination to accessory equipment. The connector is designed to house fifteen signal contacts on a 1mm pitch rated at 1.5A. There is the option to include a switching RF coax.

A cradle SMT plug connector for docking applications is also available as standard and has the option of including a SMT RF coax.

Whatever your requirements, the 9157 series can also be customized to suit your application.

APPLICATIONS

- Mobile Phones
- PDA
- Medical
- Docking/Charging for any portable device
- Product Specification: Refer to 201-01-079

FEATURES AND BENEFITS

- Patented 20° angled face on the socket gives self-cleaning face when mated with plug.
- Metal Latching area integral to socket which saves PCB real estate.
- Integral to socket is a mechanical 50Ω switching coax for SMT termination.
- Single sprung plug contact design gives ten thousand mating cycles and cleaning/wiping action.
- Customer has option to terminate own RF coax using KYOCERA AVX custom tooling: 06-9157-7116-01-000.
- SMT plug has unique location pyramids that give positive alignment to portable device, and assist blind mating.
- RoHS Compliant.

ELECTRICAL

- Current Rating: 1.5 Amps / Contact
- Voltage Rating: 125 VAC (RMS) or DC equivalent

ENVIRONMENTAL

- Operating Temperature: -55°C to +125°C
- Storage Temperature: -40°C to +80°C

MECHANICAL

- Insulator Material: Glass-Filled Nylon 46; UL94 V-0
- Contact Material: Beryllium Copper (plug)
Phosphor Bronze (socket)
- Plating: Gold over Nickel
- Durability: 10,000 Cycles

HOW TO ORDER

Plug Options – Example

XX	9157	015	00X
Prefix	Series	No of Ways	RF Coax Option
10 = Plug		15 = 015	000 = No RF Coax 001 = With RF Coax

00X
Contact Type

Code	Type	Contact Plating
006	Wire	Nickel, Gold Nose, Pure Tin Tail
007	SMT	Nickel, Gold Nose, Pure Tin Tail

PACKING DETAILS

Type	Qty	Description
Wire	580	Tube
SMT	300	Tape & Reel

Socket Options – Example

20	9157	015	00X	006
Prefix	Series	No of Ways	RF Coax Option	Contact Type
20 = Socket		15 = 015	000 = No RF Coax 001 = With RF Coax	006 = SMT

Cover Options – Example

30	9157	9700	00	0XX
Prefix	Series	Cover Kit Press and Screw Assembly	Standard	Grommet Variation

Code	Description	Qty
9700	Cover Side	1
	Cover Body	1
	Latch Button	2
	Metal Latch	2
	Fixing Screw	2

Code	Description	Qty
000	No Grommet	NA
035	3.5mm Grommet	1
050	5.0mm Grommet	1

PACKING DETAILS
Kit to be ordered in multiples of 580

Item	Packing	Parts packed in bags of
Cover Side	Pack Parts in Bags Qty as Column 3	580
Cover Body		580
Latch Button		1160
Metal Latch		1160
Grommet		580
Fixing Screw		1160



SALES DRAWINGS
CLICK TO DOWNLOAD



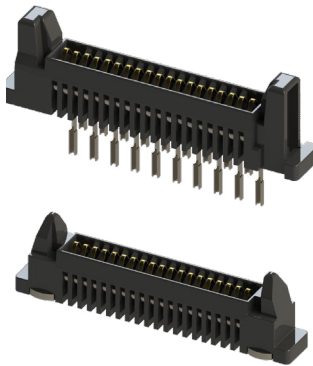
Patent:
2276285
5540599



The Important Information/Disclaimer is incorporated in the catalog where these specifications came from or available online at www.kyocera-avx.com/disclaimer/ by reference and should be reviewed in full before placing any order.

I/O CONNECTORS

Standard I/O, 19 Position: 9157-019



Based on our standard 15 way 9157 I/O family, KYOCERA AVX has now released a family 19 way devices. This range includes a SMT 90 degree plug, a wire socket version that is used with the standard 9157 cover and a SMT socket for charging applications.

Options with the 90 degree SMT socket include the sealing of the connector contacts and the connector to the housing. There is also an option to have an EMLB (early mate, late break) on pins 1 and 19.

To achieve the seal to the device housing, it may be necessary to customize the device housing design.

On the SMT 90 degree version, we also have the capability of an integrated DC jack, enabling both the DC jack and the 19 way cover to be plugged in at the same time.

APPLICATIONS

- Mobile Phones
- PDA
- Medical
- Docking/Charging for any portable device
- Product Specification: Refer to 201-01-079

FEATURES AND BENEFITS

- Patented 20° angled face on the socket gives self-cleaning face when mated with plug.
- Metal Latching area integral to socket which saves PCB real estate.
- Single sprung plug contact design gives ten thousand mating cycles and cleaning/wiping action.
- SMT plug has unique location pyramids that give positive alignment to portable device, and assist blind mating.
- RoHS Compliant.

ELECTRICAL

- Current Rating: 1.5 Amps / Contact
- Voltage Rating: 125 VAC (RMS) or DC equivalent

ENVIRONMENTAL

- Operating Temperature: -55°C to +125°C
- Storage Temperature: -40°C to +80°C

MECHANICAL

- Insulator Material: Glass-Filled Nylon 46; UL94 V-0
- Contact Material: Beryllium Copper (plug)
Phosphor Bronze (socket)
- Plating: Gold over Nickel
- Durability: 10,000 Cycles

HOW TO ORDER

Plug Options – Example

10 **9157** **019** **00X**
 Prefix Series No of Ways RF Coax Option
 10 = Plug 19 = 019 000 = No RF Coax

00X
 Contact Type

Code	Type	Contact Plating
006	Wire	Nickel, Gold Nose, Pure Tin Tail
007	SMT	Nickel, Gold Nose, Pure Tin Tail

PACKING DETAILS

Type	Qty	Description
Wire	580	Tube
SMT	300	Tape & Reel

Socket Options – Example

20 **9157** **019** **00X** **006**
 Prefix Series No of Ways RF Coax Option Contact Type
 20 = Socket 19 = 019 000 = No RF Coax 001 = With RF Coax 006 = SMT

Cover Options – Example

30 **9157** **9700** **00** **0XX**
 Prefix Series Cover Kit Press and Screw Assembly Standard Grommet Variation

Code	Description	Qty
9700	Cover Side	1
	Cover Body	1
	Latch Button	2
	Metal Latch	2
	Fixing Screw	2

Code	Description	Qty
000	No Grommet	NA
035	3.5mm Grommet	1
050	5.0mm Grommet	1

PACKING DETAILS
 Kit to be ordered in multiples of 580

Item	Packing	Parts packed in bags of
Cover Side	Pack Parts in Bags Qty as Column 3	580
Cover Body		580
Latch Button		1160
Metal Latch		1160
Grommet		580
Fixing Screw		1160

SALES DRAWINGS
 CLICK TO DOWNLOAD

I/O CONNECTORS

Reduced Size I/O, 16 Position: 9257-000



An I/O interconnect system designed for portable equipment.

KYOCERA AVX offers this reduced-size plug-and-socket system as a standard product. The fixed SMT socket is designed to be mounted on a PCB and housed within a portable device. The plug is designed for cable termination and offers options for single- and double-sided contacts. The overmold cover and parts can be customized, and the connector can be supplied for subcontract termination. The socket connector houses 16 contacts in two rows at a 1.25 mm pitch, with a rating of 1 amp per contact. Both connectors are RoHS compliant.

APPLICATIONS

- Cellular Phones
- Handheld Devices
- Industrial Modules
- Medical Electronics
- Product Specification: Refer to 201-01-089

FEATURES AND BENEFITS

- No latching is required due to the click design of the contacts.
- Optional customization of the overmold cover.
- Compact size to optimize PCB real estate.
- Metal outer cover provides integrated PCB location and solder tab.
- Positive alignment and orientation of the plug and socket.
- 5K mating cycles and 1 amp rated.

ELECTRICAL

- Current Rating: 1 Amp / Contact
- Voltage Rating: 125 VAC (RMS) or DC equivalent

ENVIRONMENTAL

- Operating Temperature: -55°C to +85°C
- Storage Temperature: -40°C to +70°C

MECHANICAL

- Insulator Material: Nylon 46; UL94 V-0
- Contact Material: Beryllium Copper
- Plating: Gold over Nickel
- Durability: 5,000 Cycles

HOW TO ORDER

Plug Options – Example

10	9257	0XX	001	003
Prefix	Series	No of Ways	Contact	Plating Option
10 = Plug		016 = 16 Way	001 = Solder Bucket	003 = 0.8µm Selective Gold, Pure Tin Tail

PACKING
Parts packed in tubes
50 per tube



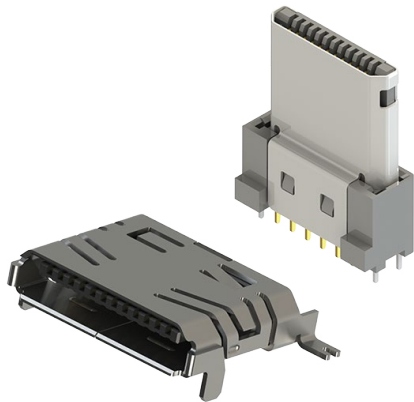
Socket Options – Example

20	9257	016	001	01	3
Prefix	Series	No of Ways	Contact	Solder Bracket	Plating Option
20 = Socket		016 = 16	001 = SMT Termination	01 = Solder Bracket with Location Pegs	3 = 0.8µm Selective Gold, Tin Tail



I/O CONNECTORS

Mini I/O, 12 Position: 9257-100



KYOCERA AVX offers the 12 way mini I/O connector as a standard product. The fixed SMT socket is designed to be mounted on a PCB and housed within a portable device. The plug is designed for cable termination with options of single and double sided contacts. Parts can be supplied as connectors only for sub contract termination, or with a custom overmold cover. The socket connector houses 12 contacts in a single row on 0.50mm pitch.

APPLICATIONS

- Medical Electronics
- Cellular Phones
- Industrial Modules
- Hand Held Devices
- Product Specification: Refer to 201-01-116

FEATURES AND BENEFITS

- No latching required due to the click design of the contacts.
- Optional customization of the overmold cover.
- Compact size to optimize PCB real estate.
- Metal outer cover provides integrated PCB location and solder tab.
- Positive alignment and orientation of the plug and socket.

ELECTRICAL

- Current Rating: 0.5 Amp / Contact
- Voltage Rating: 50 VAC (RMS) or DC equivalent

ENVIRONMENTAL

- Operating Temperature: -55°C to +85°C
- Storage Temperature: -40°C to +70°C

MECHANICAL

- Insulator Material: High Temperature Plastic; UL94 V-0
- Contact Material: Phosphor Bronze (Plug)
Copper Alloy (Socket)
- Plating: Gold over Nickel
- Durability: 5,000 Cycles

HOW TO ORDER

Plug Options

10	9257	012	101	006
Prefix	Series	No of Ways	Contact	Contact Plating Option
10 = Plug		012 = 12 Way	001 = Solder Tail	006 = 0.25µm Gold over Nickel



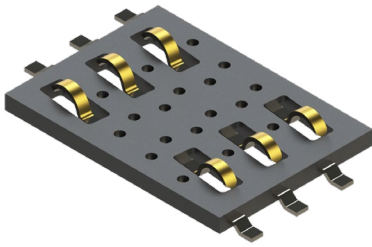
SALES DRAWINGS
CLICK TO DOWNLOAD

Socket Options – Example

20	9257	012	101	01	6
Prefix	Series	No of Ways	Contact	Solder Bracket	Plating Option
20 = Socket		012 = 12 Way	101 = SMT Termination	001 = Solder Bracket with Location Pegs	3 = 0.25µm Gold over Nickel

SIM CARD CONNECTORS

SIM Block: 9162-000



The standard SIM connector is designed specifically for handheld devices that require secure subscriber identification.

These connectors are available in a standard six-pin configuration with a 2.54-millimeter pitch and a height of 0.8 millimeters.

The contacts are stamped and gold-plated with a rating of 0.5A and 5,000 mechanical cycles.

The rounded design of our contacts avoids possible damage to the card itself during and after insertion, assuming normal use. The design incorporates protection features to prevent contact damage during insertion, such as contact snagging.

Please contact the appropriate sales office for further details.

APPLICATIONS

- Cellular Phones
- Radios
- Product Specification: Refer to 201-01-084

FEATURES AND BENEFITS

- Produced for use with both full ISO cards and mini SIM cards.
- The insulator is molded from high temperature plastic enabling the connector to be used in convection or infrared soldering processes.
- Supplied on tape and reel packaging for pick and place assembly.
- RoHS Compliant.

ELECTRICAL

- Current Rating: 0.5 Amp / Contact
- Voltage Rating: 50 VAC (RMS) or DC equivalent

ENVIRONMENTAL

- Operating Temperature: -55°C to +80°C
- Storage Temperature: -40°C to +70°C

MECHANICAL

- Insulator Material: Glass Filled LCP
- Contact Material: Beryllium Copper
- Plating: Gold over Nickel
- Durability: 5,000 Cycles

HOW TO ORDER

00	9162	006	006	080
Prefix	Series	Number of Contacts	SIM Type	Connector Height
			006 = SMT Low Profile SIM Pure Tin Contact	080 = 0.80mm

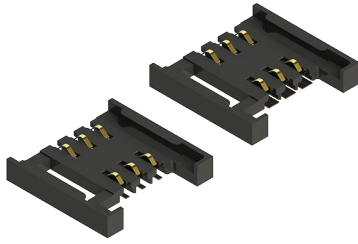


SALES DRAWINGS
CLICK TO DOWNLOAD



SIM CARD CONNECTORS

Slide-In SIM: 9162-200



The standard SIM connector is designed for handheld devices that require secure subscriber identification.

Following the introduction of our standard SIM block, which offers three standard heights (0.80 mm, 1.60 mm, and 2.40 mm), KYOCERA AVX is adding another standard to the 9162 series of SIM connectors: the slide-in SIM.

Unlike SIM blocks, which require guides to aid in the insertion, removal, and retention of SIM cards, the slide-in SIM has built-in guides.

The contacts are stamped, gold-plated, and rated at 0.5A and 5,000 mechanical cycles. Our rounded contact design avoids possible damage to the card itself during and after insertion, assuming normal use. The design incorporates protection features to prevent contact damage during insertion, such as contact snagging.

Please contact the appropriate sales office for more information.

APPLICATIONS

- Cellular Phones
- Radios
- Product Specification: Refer to 201-01-085

FEATURES AND BENEFITS

- Produced for use with mini SIM cards.
- The insulator is molded from high temperature plastic enabling the connector to be used in convection or infrared soldering processes.
- Supplied on tape and reel packaging for pick and place assembly.
- The all plastic design, assuming normal use prevents damage to the SIM card on insertion.
- Optional SMT contact size:
 - Standard SMT contact size – 1.60mm x 1.60mm
 - Narrow SMT contact size – 1.05mm x 0.60mm
- RoHS Compliant available.

ELECTRICAL

- Current Rating: 0.5 Amp / Contact
- Voltage Rating: 50 VAC (RMS) or DC equivalent

ENVIRONMENTAL

- Operating Temperature: -40°C to +105°C
- Storage Temperature: -40°C to +70°C

MECHANICAL

- Insulator Material: Nylon 46 UL94HB
- Contact Material: Phosphor Bronze
- Plating: Gold over Nickel
- Durability: 5,000 Cycles

HOW TO ORDER

00	9162	006	2X	6	175
Prefix	Series	Number of Contacts	SIM Type	Plating Option	Connector Height
			20 = Standard SMT Foot Slide-in SIM Reader 21 = Narrow SMT Foot Slide-in SIM Reader	6 = Selective Gold Pure Tin Tails	175 = 1.750mm



[SALES DRAWINGS](#)
CLICK TO DOWNLOAD



SIM CARD CONNECTORS

Locking SIM: 9162-300



For 9162 Slide-IN & 9162 SIM/microSD

- Accepts GSM Standard 11.11 cards
- Secure locking latch mechanism
- Robust, good resistance against shock and vibration
- SIM Installed Height – 1.50mm
- Polarized to eliminate improper insertion of the card

APPLICATIONS

- Cellular Phones
- Radios
- Product Specification: Refer to 201-01-111

FEATURES AND BENEFITS

- SMT with locking hinged guide
- 2.50mm connector height
- Selective gold on mating surface/tin on solder tails
- Tape and reel packaging

ELECTRICAL

- Current Rating: 0.3 Amp / Contact
- Voltage Rating: 30 VAC (RMS) or DC equivalent

ENVIRONMENTAL

- Operating Temperature: -40°C to +125°C
- Storage Temperature: -40°C to +70°C

MECHANICAL

- Insulator Material: High Temperature Plastic; UL94 V-0
- Contact Material: Copper Alloy
- Plating: Gold over Nickel
- Durability: 10,000 Cycles

HOW TO ORDER

00

Prefix

9162

Series

006

Number of
Contacts

30

SIM Type

30 = SMT with Locking
Hinge SIM Guide

1

Contact Plating

1 = Selective Gold on Contact
Surface and Tin on Solder Tails

150

SIM Height

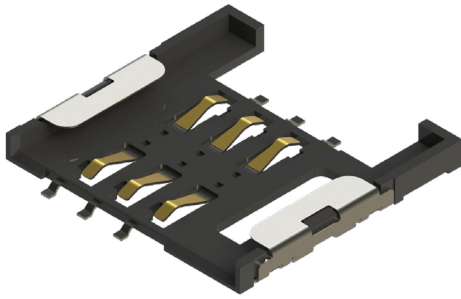
150 = 1.50mm on SIM Card
2.50mm on Connector



SALES DRAWINGS
CLICK TO DOWNLOAD

SIM CARD CONNECTORS

Slide-In Low Profile SIM: 9162-400



- Six position Slide-In SIM
- Low Profile – 0.70mm to SIM base
- Side bracket to add solder security
- SIM guidance using the side walls

APPLICATIONS

- Cellular Phones
- Radios
- Product Specification: Refer to 201-01-112

FEATURES AND BENEFITS

- SMT Slide-In SIM
- Molded in high temperature LCP
- 0.38 μ m Gold on contact surface and gold flash on contact tails
- 1.60mm connector height
- Tape & Reel packaging

ELECTRICAL

- Current Rating: 0.3 Amp / Contact
- Voltage Rating: 15 VAC (RMS) or DC equivalent

ENVIRONMENTAL

- Operating Temperature: -25°C to +70°C
- Storage Temperature: -40°C to +70°C

MECHANICAL

- Insulator Material: High Temperature Plastic; UL94 V-0
- Contact Material: Copper Alloy
- Plating: Gold over Nickel
- Durability: 10,000 Cycles

HOW TO ORDER

00
Prefix

9162
Series

006
Number of
Contacts

40
SIM Type
40 = SMT Slide-in SIM

1
Contact Plating
1 = 0.38 μ m Gold on Contact Surface
and Gold Flash on Solder Tails.
Underplated 1.27 μ m Nickel.

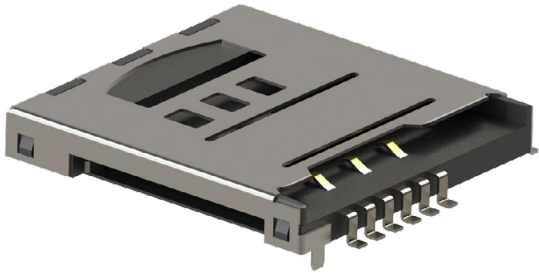
070
SIM Height
070 = 0.70mm on SIM Card
1.60mm on Connector



SALES DRAWINGS
CLICK TO DOWNLOAD

SIM CARD CONNECTORS

SIM/Micro SD Combination: 9162-500



- Six position slide-in SIM connector & Push-Push microSD connector
- Allows two cards to be inserted into the same connector
- Card detect switch on the microSD

APPLICATIONS

- Cellular Phones
- Radios
- Product Specification: Refer to 201-01-113

FEATURES AND BENEFITS

- Space saving connector combination
- Integrates 2 connectors into 1
- Contact Plating: Gold
- Insulator molded from LCP UL94 V-0
- Low profile 1.50mm to SIM
- 2.70mm connector height

ELECTRICAL

- Current Rating: 0.3 Amp / Contact
- Voltage Rating: 15 VAC (RMS) or DC equivalent

ENVIRONMENTAL

- Operating Temperature: -55°C to +85°C
- Storage Temperature: -40°C to +70°C

MECHANICAL

- Insulator Material: LCP; UL94 V-0
- Contact Material: Beryllium Copper
- Plating: Gold over Nickel
- Durability: SIM @10,000 Cycles / SD @ 6000 Cycles

HOW TO ORDER

00
Prefix

9162
Series

006
Number of
Contacts

50
SIM Type
50 = SMT with SIM
and Micro SD
Slots at 90°

1
Contact Plating
1 = Gold Plating over Nickel

150
SIM Height
150 = 1.50mm on SIM Card
2.70mm on Connector



SALES DRAWINGS
CLICK TO DOWNLOAD



FOLLOW US:     

VISIT US AT WWW.KYOCERA-AVX.COM 

A light gray world map is centered in the background of the lower half of the page. It shows the outlines of the continents.

North America

Tel: +1 864-967-2150

Europe

Tel: +44 1276-697000

Asia

Tel: +65 6286-7555

Central America

Tel: +55 11-46881960

Japan

Tel: +81 740-321250