



**MQS**

TE Internal #: 1379029-6

Housing for Female Terminals, Wire-to-Device, 4 Position, 2.54 mm [.1 in] Centerline, Blue, Wire & Cable, Cable Mount (Free-Hanging)

[View on TE.com >](#)

Connectors > Automotive Connectors > Automotive Housings > MQS, CONNECTOR HOUSING



Connector System: **Wire-to-Device**

Number of Positions: **4**

Connector & Housing Type: **Housing for Female Terminals**

Centerline (Pitch): **2.54 mm [.1 in]**

Sealable: **No**

[All MQS, CONNECTOR HOUSING \(353\)](#)

**Features**

**Product Type Features**

Connector System	Wire-to-Device
Connector & Housing Type	Housing for Female Terminals
Sealable	No
Connector & Contact Terminates To	Wire & Cable
Primary Locking Feature	On the Terminal
Mixed & Hybrid Connector	No
Connector Shape	Rectangular

**Configuration Features**

Number of Positions	4
Number of Rows	1

**Housing Features**

Centerline (Pitch)	2.54 mm [.1 in]
Housing Material	PBT GF

**Contact Features**

Mating Tab Width	.63 mm [.025 in]
Contact Size	.63mm
Contact Type	Receptacle



### Body Features

Primary Product Color	Blue
Cable Exit Angle	180°

### Mechanical Attachment

Connector Mounting Type	Cable Mount (Free-Hanging)
Strain Relief	Without
Terminal Position Assurance	Yes
Mating Alignment Type	Keyed
Mating Alignment	With

### Usage Conditions

Operating Temperature (Max)	150 °C[302 °F]
Operating Temperature Range	-40 – 150 °C[-40 – 302 °F]

### Other

Connector Position Assurance Capable	No
EU RoHS Compliance	Compliant
EU ELV Compliance	Compliant
Serviceable	No

### Electrical Characteristics

Operating Voltage	24 VDC
-------------------	--------

### Dimensions

Product Width	17.6 mm[.693 in]
Product Length	16.5 mm[.65 in]
Connector Height	10.7 mm[.421 in]

### Industry Standards

UL Flammability Rating	UL 94HB
------------------------	---------

### Packaging Features

Packaging Method	Box
------------------	-----

### Product Compliance

[For compliance documentation, visit the product page on TE.com>](#)

EU RoHS Directive 2011/65/EU	Compliant
EU ELV Directive 2000/53/EC	Compliant



China RoHS 2 Directive MIIT Order No 32, 2016	No Restricted Materials Above Threshold
EU REACH Regulation (EC) No. 1907/2006	Current ECHA Candidate List: JUNE 2024 (241) Candidate List Declared Against: JUNE 2024 (241) Does not contain REACH SVHC
Halogen Content	Low Halogen - Br, Cl, F, I < 900 ppm per homogenous material. Also BFR/CFR/PVC Free
Solder Process Capability	Not reviewed for solder process capability

Product Compliance Disclaimer

This information is provided based on reasonable inquiry of our suppliers and represents our current actual knowledge based on the information they provided. This information is subject to change. The part numbers that TE has identified as EU RoHS compliant have a maximum concentration of 0.1% by weight in homogenous materials for lead, hexavalent chromium, mercury, PBB, PBDE, DBP, BBP, DEHP, DIBP, and 0.01% for cadmium, or qualify for an exemption to these limits as defined in the Annexes of Directive 2011/65/EU (RoHS2). Finished electrical and electronic equipment products will be CE marked as required by Directive 2011/65/EU. Components may not be CE marked. Additionally, the part numbers that TE has identified as EU ELV compliant have a maximum concentration of 0.1% by weight in homogenous materials for lead, hexavalent chromium, and mercury, and 0.01% for cadmium, or qualify for an exemption to these limits as defined in the Annexes of Directive 2000/53/EC (ELV). Regarding the REACH Regulation, the information TE provides on SVHC in articles for this part number is based on the latest European Chemicals Agency (ECHA) 'Guidance on requirements for substances in articles' posted at this URL: <https://echa.europa.eu/guidance-documents/guidance-on-reach>

### Compatible Parts



### Customers Also Bought





TE Part #1801175-1  
2W RECEPTACLE HP CONNECTOR  
BLACK



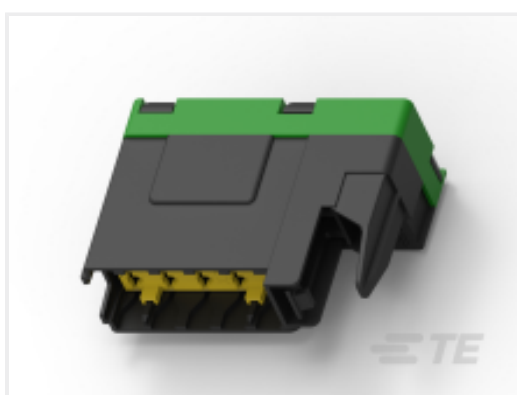
TE Part #1-1801607-6  
TAB MAIN HOUSING, MCON, 10 W,  
SEALED



TE Part #1801600-2  
RECEPTACLE HOUSING, MCON, 10  
W, SEALED



TE Part #1801823-1  
4POS, MCON 0.5 CB, REC HSG, BLACK,  
ASSY, SLD



TE Part #1544647-1  
BFH 5



TE Part #3-953657-1  
5W TAB HSG ASSY

## Documents

### Product Drawings

#### 4POS MQS REC

English

### CAD Files

#### Customer View Model

[ENG\\_CVM\\_CVM\\_1379029-6\\_A.2d\\_dxf.zip](#)

English

#### 3D PDF

3D

#### Customer View Model

[ENG\\_CVM\\_CVM\\_1379029-6\\_A.3d\\_igs.zip](#)

English

#### Customer View Model

[ENG\\_CVM\\_CVM\\_1379029-6\\_A.3d\\_stp.zip](#)

English

By downloading the CAD file I accept and agree to the [Terms and Conditions](#) of use.

### Product Specifications

#### Process Specification

English

### Instruction Sheets

#### Instruction Sheet (non U.S.)

English