

1744036-8 ✓ ACTIVE



Economy Power

TE Internal #: 1744036-8

Housing, Plug, Wire-to-Board, 8 Position, 5.08 mm [.2 in]
Centerline, Wire & Cable, UL 94V-0, Economy Power, Rectangular
Power Connectors

[View on TE.com >](#)

Connectors > Power Connectors > Rectangular Power > Rectangular Power Connectors



EU RoHS Compliance: **Compliant**
EU ELV Compliance: **Compliant**
Rectangular Power Connector Type: **Housing**
Connector & Housing Type: **Plug**
Connector System: **Wire-to-Board**

Features

Other

EU RoHS Compliance	Compliant
EU ELV Compliance	Compliant

Product Type Features

Rectangular Power Connector Type	Housing
Connector & Housing Type	Plug
Connector System	Wire-to-Board
Sealable	No
Connector & Contact Terminates To	Wire & Cable

Configuration Features

Number of Positions	8
Number of Rows	1

Electrical Characteristics

Operating Voltage	250 VDC
-------------------	---------



Contact Features

Contact Layout	Inline
Contact Current Rating (Max)	7.5 A
Contact Retention Within Housing	Without
Contact Type	Receptacle

Termination Features

Termination Method to Wire & Cable	Crimp
------------------------------------	-------

Mechanical Attachment

Strain Relief	Without
Panel Mount Feature	Without
Mating Retention Type	Locking Latch, Latch
PCB Mount Retention	Without
Mating Retention	With
Mating Alignment Type	Polarization
Mating Alignment	With
Connector Mounting Type	Cable Mount (Free-Hanging)

Housing Features

Centerline (Pitch)	5.08 mm [.2 in]
Housing Color	Natural
Housing Material	Nylon

Dimensions

Compatible Insulation Diameter Range	1.7 – 3 mm [.067 – .118 in]
Product Width	13.3 mm [.524 in]
Product Length	39.46 mm [1.554 in]
Connector Height	10.5 mm [.413 in]

Usage Conditions

Operating Temperature Range	-25 – 105 °C [-13 – 221 °F]
-----------------------------	-----------------------------

Operation/Application

Circuit Application	Power & Signal
---------------------	----------------

Industry Standards

UL Flammability Rating	UL 94V-0
Glow Wire Rating	Standard Part - Not Glow Wire



Packaging Features

Packaging Quantity	500
Packaging Method	Bag

Product Compliance

[For compliance documentation, visit the product page on TE.com>](#)

EU RoHS Directive 2011/65/EU	Compliant
EU ELV Directive 2000/53/EC	Compliant
China RoHS 2 Directive MIIT Order No 32, 2016	No Restricted Materials Above Threshold
EU REACH Regulation (EC) No. 1907/2006	Current ECHA Candidate List: JUNE 2024 (241) Candidate List Declared Against: JUNE 2024 (241) Does not contain REACH SVHC
Halogen Content	Low Halogen - Br, Cl, F, I < 900 ppm per homogenous material. Also BFR/CFR/PVC Free
Solder Process Capability	Not applicable for solder process capability

Product Compliance Disclaimer

This information is provided based on reasonable inquiry of our suppliers and represents our current actual knowledge based on the information they provided. This information is subject to change. The part numbers that TE has identified as EU RoHS compliant have a maximum concentration of 0.1% by weight in homogenous materials for lead, hexavalent chromium, mercury, PBB, PBDE, DBP, BBP, DEHP, DIBP, and 0.01% for cadmium, or qualify for an exemption to these limits as defined in the Annexes of Directive 2011/65/EU (RoHS2). Finished electrical and electronic equipment products will be CE marked as required by Directive 2011/65/EU. Components may not be CE marked. Additionally, the part numbers that TE has identified as EU ELV compliant have a maximum concentration of 0.1% by weight in homogenous materials for lead, hexavalent chromium, and mercury, and 0.01% for cadmium, or qualify for an exemption to these limits as defined in the Annexes of Directive 2000/53/EC (ELV). Regarding the REACH Regulation, the information TE provides on SVHC in articles for this part number is based on the latest European Chemicals Agency (ECHA) 'Guidance on requirements for substances in articles' posted at this URL: <https://echa.europa.eu/guidance-documents/guidance-on-reach>

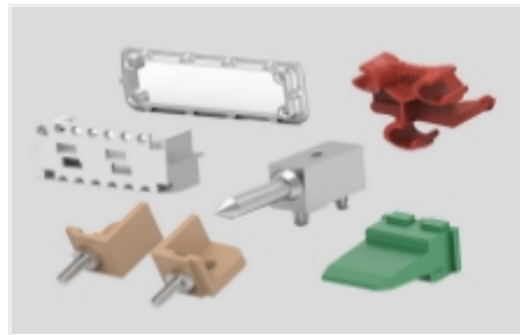
Compatible Parts



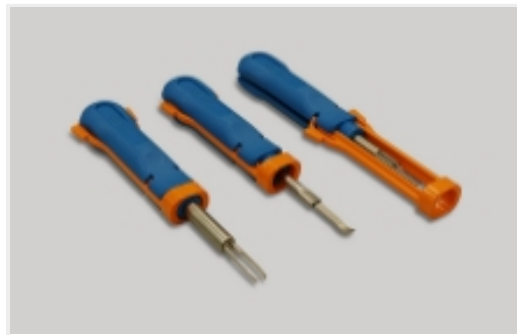
Also in the Series | **Economy Power**



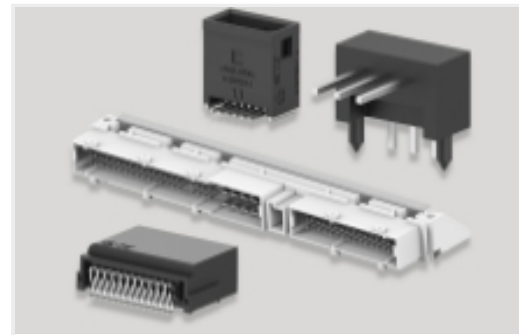
Connector Contacts(15)



Connector Hardware(2)



Insertion & Extraction Tools(1)



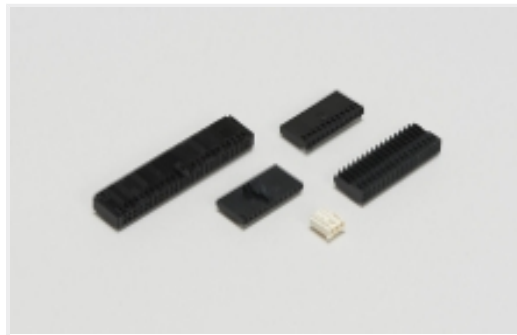
PCB Headers & Receptacles(402)



Rectangular Connector Housings(1)



Rectangular Power Connectors(57)



Wire-to-Board Connector Assemblies & Housings(141)

Customers Also Bought



TE Part #3-640440-5
05P MTA100 CONN ASSY 22AWG RED



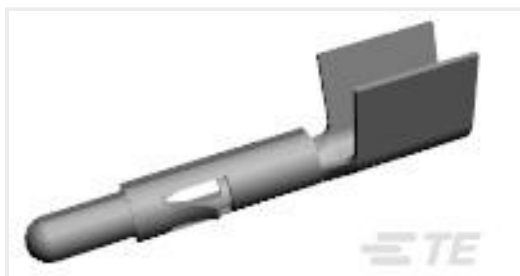
TE Part #2063388-1
TOOL, EXTRACTION



TE Part #1658621-4
20 NOVO MIL/CTR 15DP, LEAD FREE



TE Part #3-640426-2
02P MTA156 CONN ASSY 18AWG ORA



TE Part #640309-3
UMNL PIN 12-10 PTPPHBZ



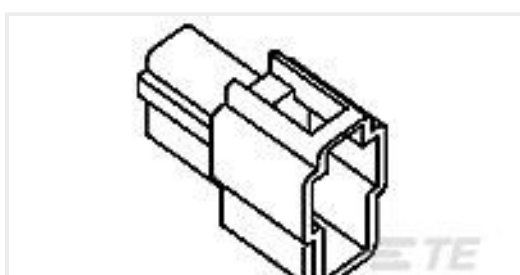
TE Part #1-480763-0
05P UMNL PLUG HSG NATL



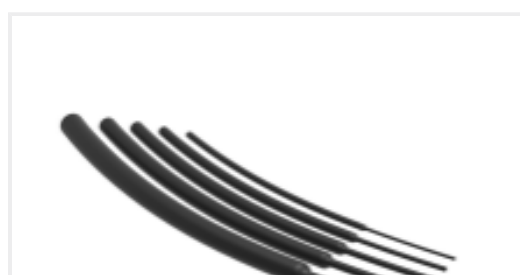
TE Part #62026-1
187 FASTON REC 20-16 AWG TPBR



TE Part #2-320569-3
TERM, RT, PIDG, 12-10, 1/4, T&R



TE Part #172129-2
FF 250 PLUG HSG 2P NYLON BLACK



TE Part #NB20034001
VERSAFIT-1/4-0-SP

Documents



Product Drawings

08P ECONOMY POWER .200 CL HSG

English

CAD Files

3D PDF

3D

Customer View Model

[ENG_CVM_CVM_1744036-8_B.2d_dxf.zip](#)

English

Customer View Model

[ENG_CVM_CVM_1744036-8_B.3d_igs.zip](#)

English

Customer View Model

[ENG_CVM_CVM_1744036-8_B.3d_stp.zip](#)

English

By downloading the CAD file I accept and agree to the [Terms and Conditions](#) of use.

Datasheets & Catalog Pages

1-1773885-9 Economy Power Connectors

English

Product Specifications

Application Specification

Japanese

Application Specification

English

Agency Approvals

VDE Certificate

English