

103688-7 ✓ ACTIVE

AMPMODU | AMPMODU MTE

TE Internal #: 103688-7

Housing, Receptacle, Wire-to-Board, 8 Position, 2.54 mm [.1 in]  
Centerline, Crimp / Insulation Displacement (IDC), 1 Row, Black,  
AMPMODU MTE

[View on TE.com >](#)



Connectors > PCB Connectors > Wire-to-Board Connectors > Wire-to-Board Connector Assemblies & Housings



Connector Product Type: **Housing**

Connector & Housing Type: **Receptacle**

Connector System: **Wire-to-Board**

Number of Positions: **8**

Centerline (Pitch): **2.54 mm [.1 in]**

## Features

### Product Type Features

Connector Product Type	Housing
Connector & Housing Type	Receptacle
Connector System	Wire-to-Board
Sealable	No
Connector & Contact Terminates To	Wire & Cable

### Configuration Features

Number of Positions	8
Number of Rows	1

### Housing Features

Centerline (Pitch)	2.54 mm [.1 in]
Housing Material	Flame-Retardant Thermoplastic

### Termination Features

Termination Method to Wire & Cable	Crimp, Insulation Displacement (IDC)
------------------------------------	--------------------------------------

### Body Features

Primary Product Color	Black
-----------------------	-------

### Mechanical Attachment

Mating Retention	Without
Connector Mounting Type	Cable Mount (Free-Hanging)



Contact Retention Type Within Housing	Locking Lance
Strain Relief	Without
Panel Mount Feature	Without
PCB Mount Retention	Without

### Contact Features

Contact Current Rating (Max)	3 A
Contact Layout	Inline
Contact Retention Within Housing	With
Contact Base Material	Phosphor Bronze
Contact Type	Socket

### Operation/Application

Circuit Application	Signal
---------------------	--------

### Usage Conditions

Operating Temperature Range	-65 – 105 °C[-85 – 221 °F]
-----------------------------	----------------------------

### Other

EU RoHS Compliance	Compliant
EU ELV Compliance	Compliant

### Electrical Characteristics

Operating Voltage	600 VAC
Dielectric Withstanding Voltage (Max)	600 V
Insulation Resistance	5000 MΩ

### Dimensions

Connector Height	2.49 mm[.098 in]
Connector Length	2.03 mm[.798 in]

### Industry Standards

UL Flammability Rating	UL 94V-0
Glow Wire Rating	Standard Part - Not Glow Wire

### Packaging Features

Packaging Method	Package
Packaging Quantity	1



## Product Compliance

[For compliance documentation, visit the product page on TE.com>](#)

EU RoHS Directive 2011/65/EU	Compliant
EU ELV Directive 2000/53/EC	Compliant
China RoHS 2 Directive MIIT Order No 32, 2016	No Restricted Materials Above Threshold
EU REACH Regulation (EC) No. 1907/2006	Current ECHA Candidate List: JUNE 2024 (241) Candidate List Declared Against: JUNE 2024 (241) Does not contain REACH SVHC
Halogen Content	Not Low Halogen - contains Br or Cl > 900 ppm.
Solder Process Capability	Not applicable for solder process capability

### Product Compliance Disclaimer

This information is provided based on reasonable inquiry of our suppliers and represents our current actual knowledge based on the information they provided. This information is subject to change. The part numbers that TE has identified as EU RoHS compliant have a maximum concentration of 0.1% by weight in homogenous materials for lead, hexavalent chromium, mercury, PBB, PBDE, DBP, BBP, DEHP, DIBP, and 0.01% for cadmium, or qualify for an exemption to these limits as defined in the Annexes of Directive 2011/65/EU (RoHS2). Finished electrical and electronic equipment products will be CE marked as required by Directive 2011/65/EU. Components may not be CE marked. Additionally, the part numbers that TE has identified as EU ELV compliant have a maximum concentration of 0.1% by weight in homogenous materials for lead, hexavalent chromium, and mercury, and 0.01% for cadmium, or qualify for an exemption to these limits as defined in the Annexes of Directive 2000/53/EC (ELV). Regarding the REACH Regulation, the information TE provides on SVHC in articles for this part number is based on the latest European Chemicals Agency (ECHA) 'Guidance on requirements for substances in articles' posted at this URL: <https://echa.europa.eu/guidance-documents/guidance-on-reach>

## Compatible Parts



TE Part # 1-104479-0  
SHORT POINT CONT 30 DPLX  
STMPD LF



TE Part # 104479-9  
SHORT POINT CONT 15 DPLX  
STMPD LF



TE Part # 1-104480-3  
SHORT POINT CONT 30 DPLX  
STMPD LF



TE Part # 104479-8  
SHORT POINT CONT PLTD SN



TE Part # 1-104480-2  
SHORT POINT CONT 15 DPLX  
STMPD LF



TE Part # 1-104481-1  
SHORT POINT CONT 30 DPLX  
STMPD LF



TE Part # 1-104481-0  
SHORT POINT CONT 15 DPLX  
STMPD LF



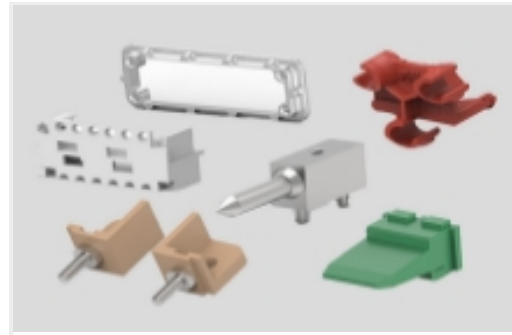
## Also in the Series | AMPMODU MTE



Connector Caps & Covers(18)



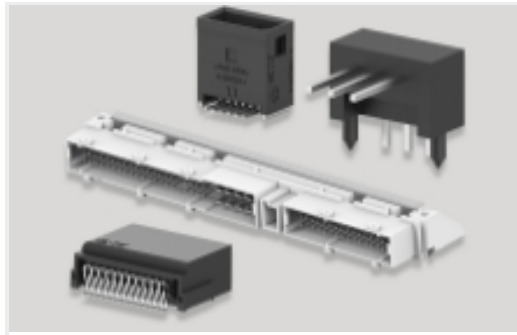
Connector Contacts(27)



Connector Hardware(1)



Insertion & Extraction Tools(1)



PCB Headers & Receptacles(444)

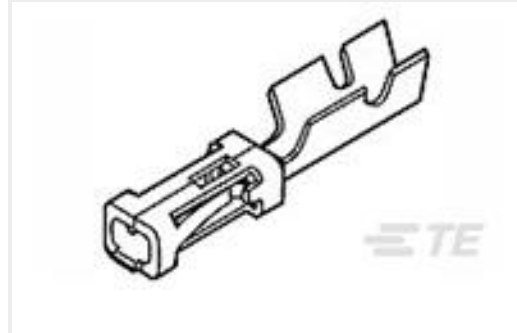


Wire-to-Board Connector Assemblies & Housings(298)

## Customers Also Bought



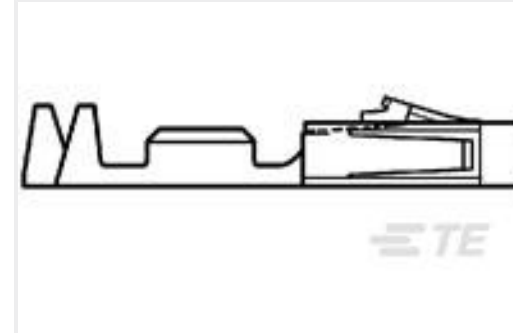
TE Part #1625862-1  
RH73 2A 10G 30% 1000PPM 1K RL



TE Part #6-87756-6  
MOD IV RECP LP LF



TE Part #172336-1  
2P MINI UMNL PLUG HOUSING



TE Part #1-104479-0  
SHORT POINT CONT 30 DPLX STMPD LF



TE Part #770904-1  
MINI UMNL SOK 22-18 AWG SN



TE Part #104482-6  
14 SHORT PT RCPT HSG DR .100CL



TE Part #3-1825139-9  
A211SYZQ04



TE Part #1622796-1  
YR1 0.1% 100K



TE Part #1-104482-0  
22 SHORT PT RCPT HSG DR .100CL



## Documents

### Product Drawings

[08 MTE RCPT HSG SR PLAIN .100](#)

English

---

### CAD Files

[3D PDF](#)

English

**Customer View Model**

[ENG\\_CVM\\_103688-7\\_K.2d\\_dxf.zip](#)

English

**Customer View Model**

[ENG\\_CVM\\_103688-7\\_K.3d\\_igs.zip](#)

English

**Customer View Model**

[ENG\\_CVM\\_103688-7\\_K.3d\\_stp.zip](#)

English

By downloading the CAD file I accept and agree to the [Terms and Conditions](#) of use.

---

### Datasheets & Catalog Pages

[AMP MODU MTE Section of Catalog 1307819](#)

English

[AMPMODU\\_INTERCONNECTION\\_SYSTEM\\_SECTION5\\_CONT](#)

English

[AMPMODU MTE INTERCONNECT SYSTEM](#)

English

---

### Product Specifications

[Application Specification](#)

English