

()

()

Amphenol
FCI

()

© 2016 AFCl

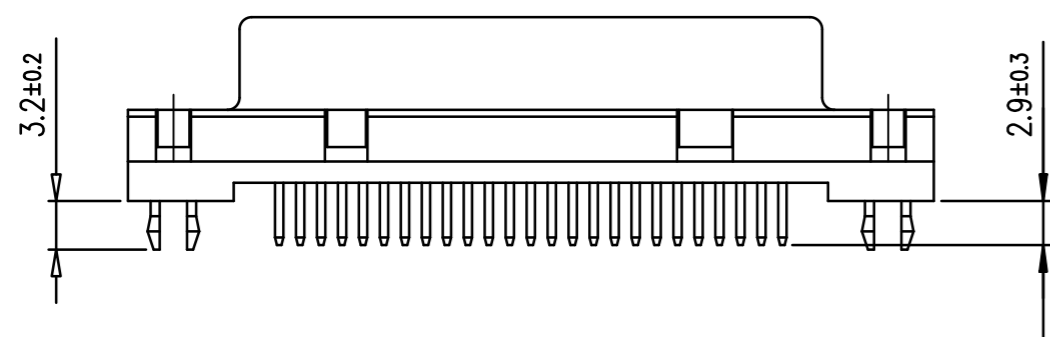
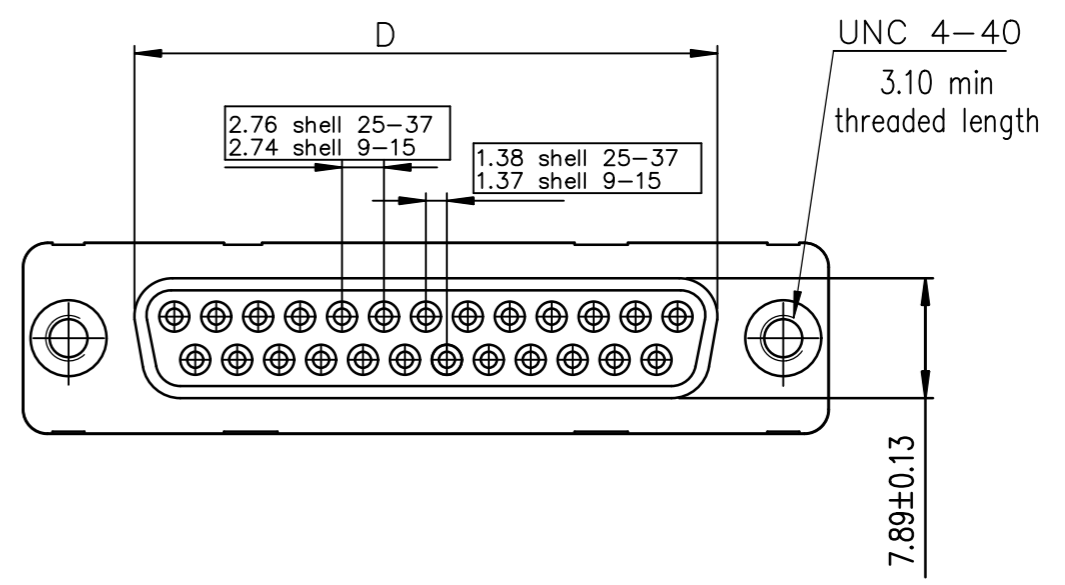
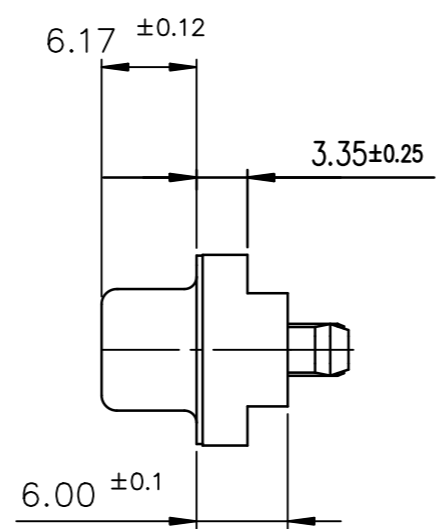
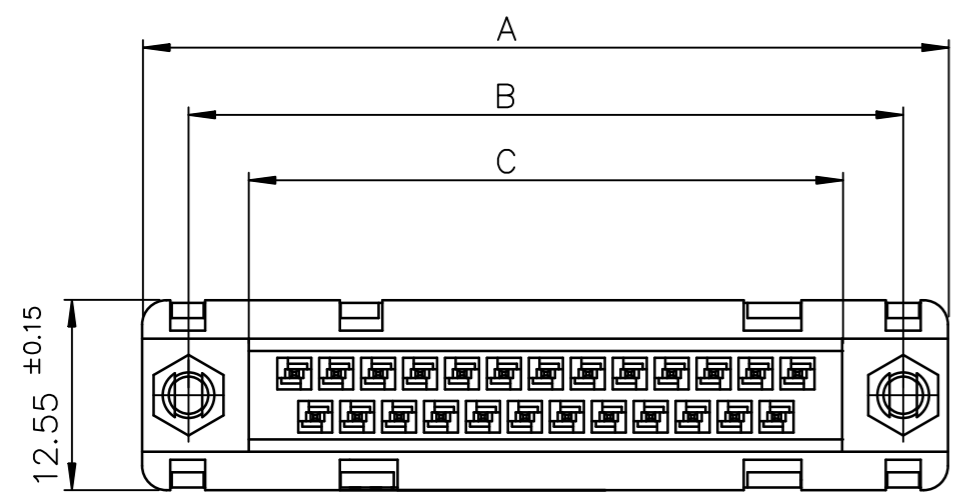
()

A

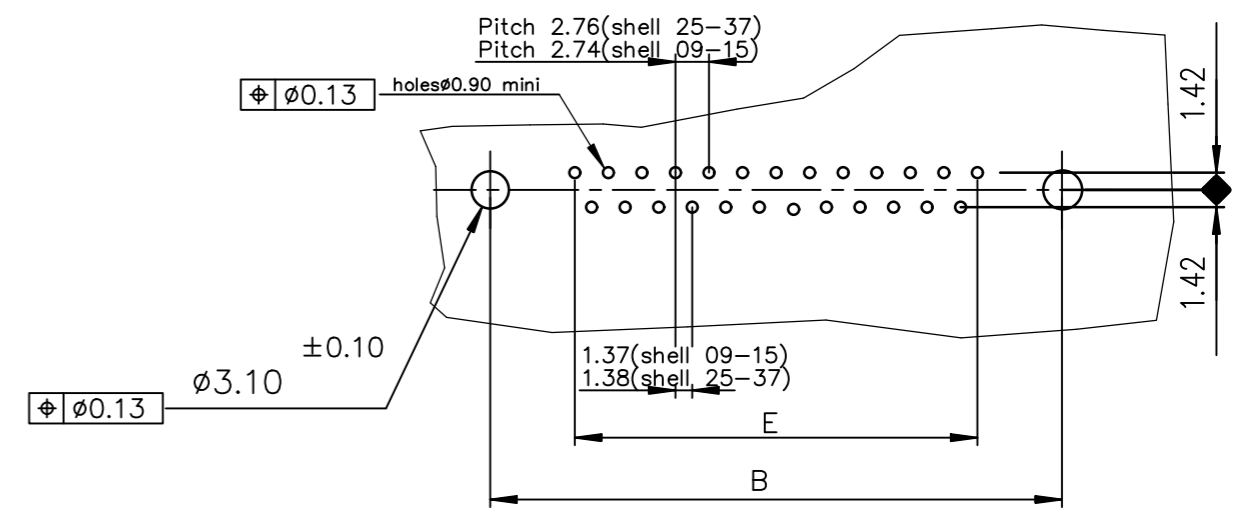
B

C

D



PC card drilling dimensions(after plating)
(thickness 1.60±0.20mm)



LEAD FREE PART NUMBER

SHELL	A±0.38	B±0.12	C±0.10	D±0.25	E±0.07	PART NUMBER
09	30.81	24.99	16.96	16.21	10.96	D09S24A.GX00LF
15	39.14	33.32	25.18	24.54	19.18	D15S24A.GX00LF
25	53.03	47.04	39.12	38.25	33.12	D25S24A.GX00LF
37	69.32	63.50	55.68	54.71	49.68	D37S24A.GX00LF

Performance Class ↓

4 --> 200 Mating Cycles
6 --> 500 Mating Cycles

GENERAL CHARACTERISTICS AND ROHS INFORMATIONS:
SEE DRAWING C01-8646-0000

mat'l. code		surface		tolerance		projection		product family	
-		ISO 1302		ISO 406 ISO 1101				D-SUB	
ltr	ecn no	dr	date	tolerances unless otherwise specified				title	
J	ELX-I-21654	AB	2015-10-26	angles		MM		FEMALE DELTA-D	
K	ELX-I-56784	GM	2025-08-05	linear		scale 2:1		STRAIGHT, SOLDER TYPE	
				0°±2'				dwg no	
				dr		JOURBERT		sheet 1 of 1	
				enrg		GREGAR M		size	
				chr		GREGAR M		A3	
				appd		ALEX BABU		type	
								Product Customer Drawing	
sheet index		revision		K					
		sheet		1					