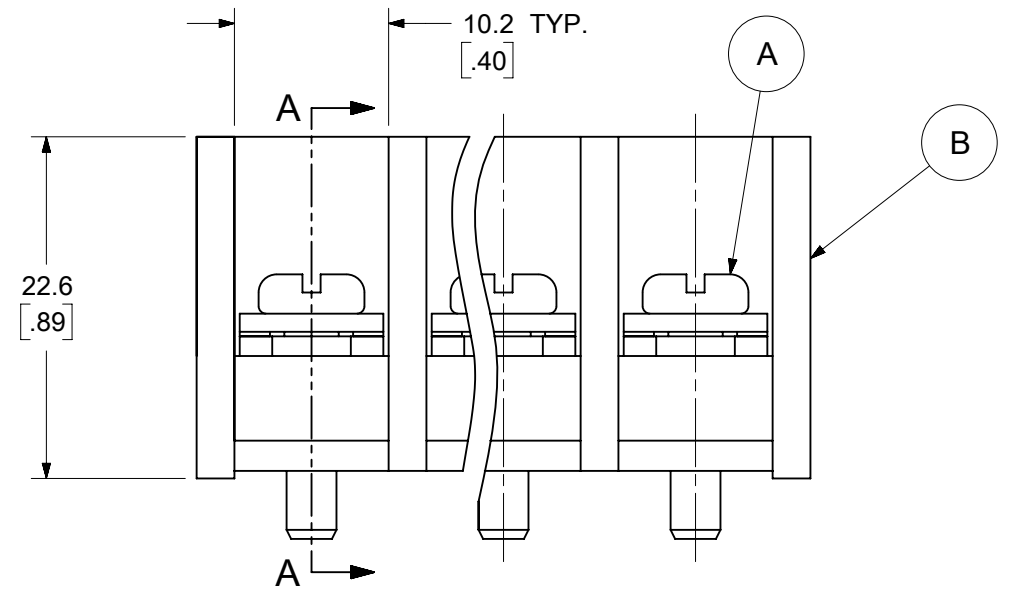
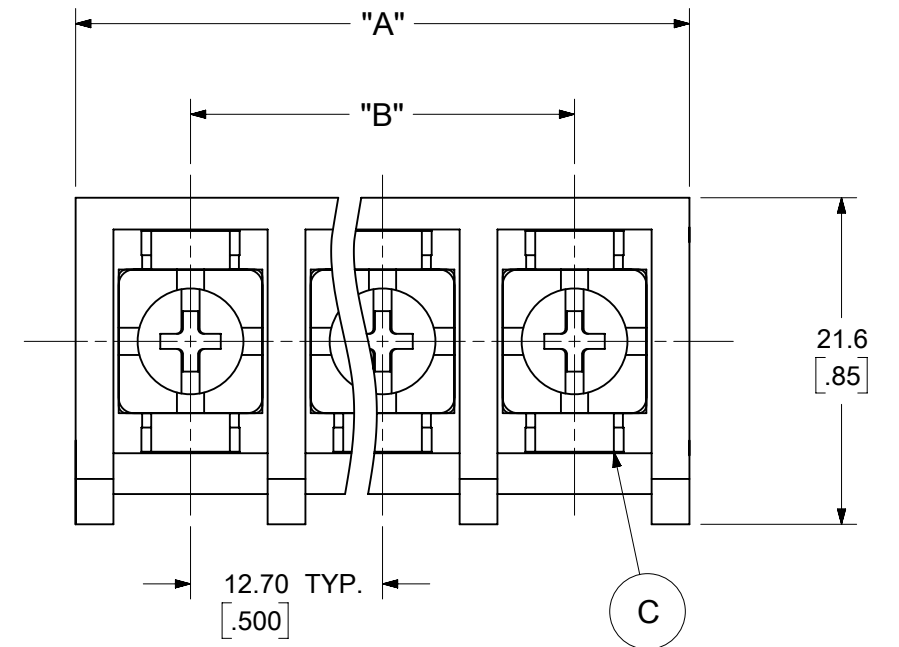
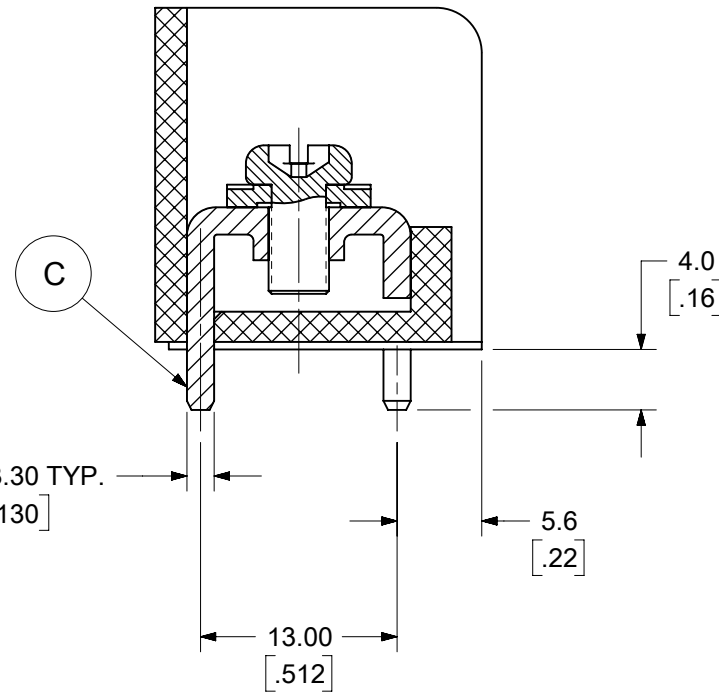


ISO. VIEW
(4 CIRCUIT SHOWN)

(F)



SECTION A-A



(F)
SPECIFICATIONS

- MATERIAL:
 - A. M4 PHIL/SLOT CLAMPING SCREW: NICKEL PLATED STEEL
 - B. BODY: PBT-GF, UL94 V-0, COLOR: BLACK
 - C. PC TERMINAL: TIN PLATED BRASS
- WIRE SIZE PER UL: 8 TO 20 AWG (SOLID OR STRANDED)
- RECOMMENDED WIRE STRIP LENGTH: 0.32 IN. (8.0mm)
- MAXIMUM ELECTRICAL RATING PER UL: 600V, 50A
- SCREW TORQUE PER UL: 16.0 LBF. IN. (1.81Nm)
- DIELECTRIC WITHSTAND: 5000VAC FOR 1 MINUTE
- INSULATION RESISTANCE: 500VDC, 500MΩ
- OPERATING TEMPERATURE: -40°C TO +120°C

(F)

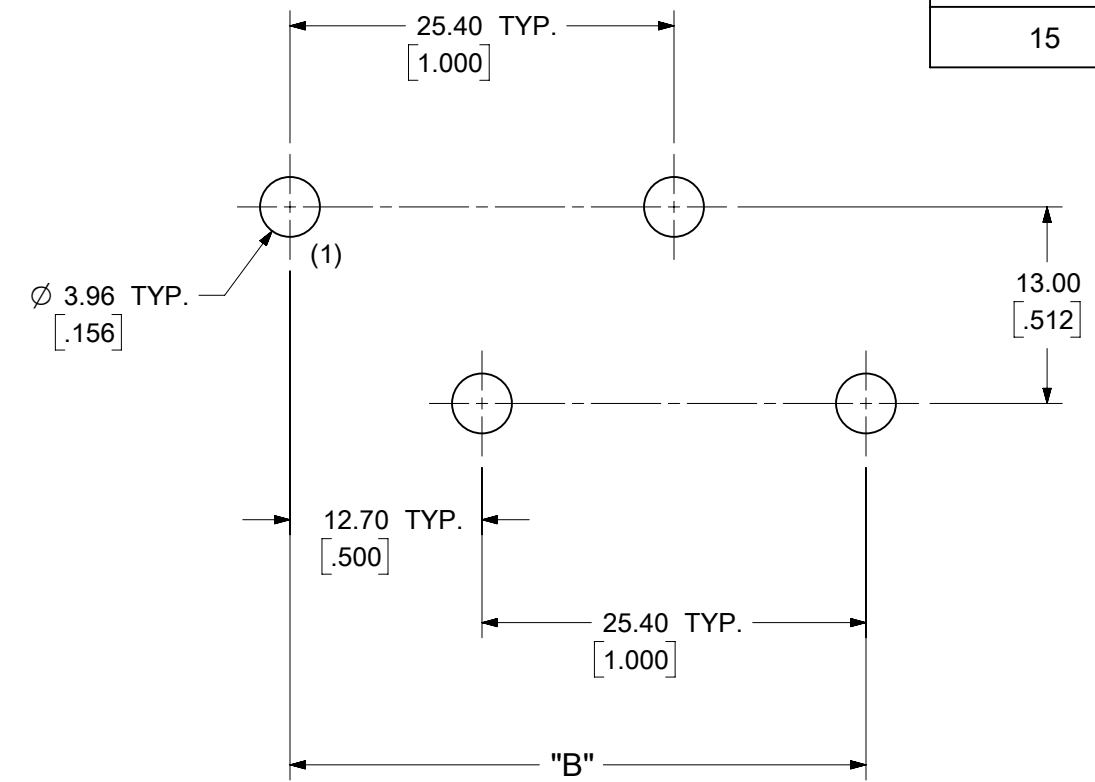
TOLERANCES			
MM	TOL	INCH	TOL
0-6	±0.25	0-.24	±.010
>6-30	±0.40	.24-1.18	±.016
>30-120	±0.50	1.18-4.76	±.020
>120	±0.80	>4.76	±.031

DOCUMENT STATUS	P1	RELEASE DATE	2026/02/16	20:48:40
-----------------	----	--------------	------------	----------

THIS DRAWING CONTAINS INFORMATION THAT IS PROPRIETARY TO MOLEX ELECTRONIC TECHNOLOGIES, LLC AND SHOULD NOT BE USED WITHOUT WRITTEN PERMISSION									
FUNCTIONAL SYMBOLS	DIMENSION UNITS	SCALE	CURRENT REV DESC: MODIFIED SPECIFICATIONS. ADDED TOL CHART & ISO VIEW						
FA = 0	MM/INCH	2:1	<p>molex</p> <p>SINGLE ROW BARRIER STRIPS 12.70MM (0.500) PITCH PC TERMINAL TYPE</p> <p>PRODUCT CUSTOMER DRAWING</p> <p>DOCUMENT NUMBER: SD-38969-001 DOC TYPE: PSD DOC PART: 001 REVISION: F</p> <p>SHEET NUMBER: 1 OF 2</p>						
EA = 0	GENERAL TOLERANCES (UNLESS SPECIFIED)								
EA = 0	MM	INCH							
DIVISIONAL SYMBOLS	4 PLACES	± --- ± ---							
	3 PLACES	± --- ± ---	EC NO: 847766	2026/02/11					
	2 PLACES	± --- ± ---	DRWN: ABENJAMINLW	2026/02/13					
	1 PLACE	± --- ± ---	CHKD: ROLANM	2026/02/16					
	0 PLACES	± --- ± ---	APPR: HKNEELAND						
	ANGULAR TOL	± ---	INITIAL REVISION:						
			DRWN: CLYORK	2006/11/22					
			APPR: JMACNEIL	2006/12/01					
	DRAFT WHERE APPLICABLE MUST REMAIN WITHIN DIMENSIONS	THIRD ANGLE PROJECTION	DRAWING	SERIES	MATERIAL NUMBER	CUSTOMER			
			B-SIZE	38969	SEE SHEET-2	GENERAL MARKET			

NO. OF CIRCUITS	PART NUMBER	DIM. "A"		DIM. "B"	
		mm	IN	mm	IN
02	389690002	27.9	1.10	12.70	.500
03	389690003	40.6	1.60	25.40	1.000
04	389690004	53.3	2.10	38.10	1.500
05	389690005	66.0	2.60	50.80	2.000
06	389690006	78.7	3.10	63.50	2.500
07	389690007	91.4	3.60	76.20	3.000
08	389690008	104.1	4.10	88.90	3.500
09	389690009	116.8	4.60	101.60	4.000
10	389690010	129.5	5.10	114.30	4.500
11	389690011	142.2	5.60	127.00	5.000
12	389690012	154.9	6.10	139.70	5.500
13	389690013	167.6	6.60	152.40	6.000
14	389690014	180.3	7.10	165.10	6.500
15	389690015	193.0	7.60	177.80	7.000

(F)



RECOMMENDED PCB LAYOUT

TOLERANCES			
MM	TOL	INCH	TOL
0-6	±0.25	0-.24	±.010
>6-30	±0.40	.24-1.18	±.016
>30-120	±0.50	1.18-4.76	±.020
>120	±0.80	>4.76	±.031

(F)

THIS DRAWING CONTAINS INFORMATION THAT IS PROPRIETARY TO MOLEX ELECTRONIC TECHNOLOGIES, LLC AND SHOULD NOT BE USED WITHOUT WRITTEN PERMISSION									
FUNCTIONAL SYMBOLS	DIMENSION UNITS	SCALE	CURRENT REV DESC: MODIFIED SPECIFICATIONS. ADDED TOL CHART & ISO VIEW						
$\frac{E}{A} = 0$	MM/INCH	2:1	molex SINGLE ROW BARRIER STRIPS 12.70MM (0.500) PITCH PC TERMINAL TYPE PRODUCT CUSTOMER DRAWING						
$\frac{E}{E} = 0$	GENERAL TOLERANCES (UNLESS SPECIFIED)								
$\frac{E}{V} = 0$	MM	INCH							
DIVISIONAL SYMBOLS	4 PLACES	± --- ± ---							
	3 PLACES	± --- ± ---	EC NO: 847766	2026/02/11	DOCUMENT NUMBER: SD-38969-001 DOC TYPE: PSD DOC PART: 001 REVISION: F MATERIAL NUMBER: SEE TABLE CUSTOMER: GENERAL MARKET SHEET NUMBER: 2 OF 2				
	2 PLACES	± --- ± ---	DRWN: ABENJAMINLW	2026/02/13					
	1 PLACE	± --- ± ---	CHKD: ROLANM	2026/02/16					
	0 PLACES	± --- ± ---	APPR: HKNEELAND						
	ANGULAR TOL	± ---	INITIAL REVISION:	2006/11/22					
			DRWN: CLYORK	2006/12/01					
			APPR: JMACNEIL						
	DRAFT WHERE APPLICABLE MUST REMAIN WITHIN DIMENSIONS	THIRD ANGLE PROJECTION	DRAWING	SERIES					
			B-SIZE	38969					