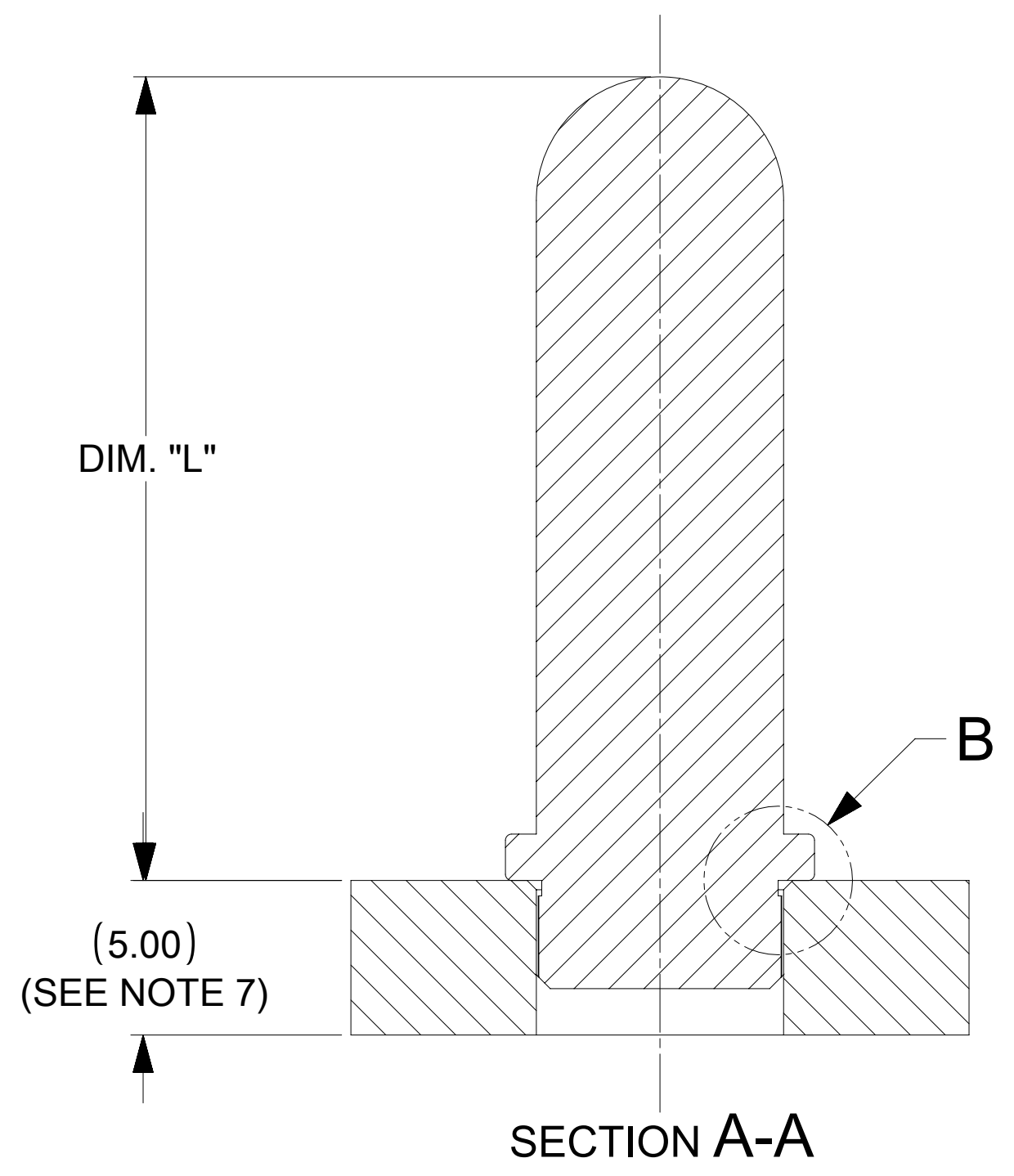
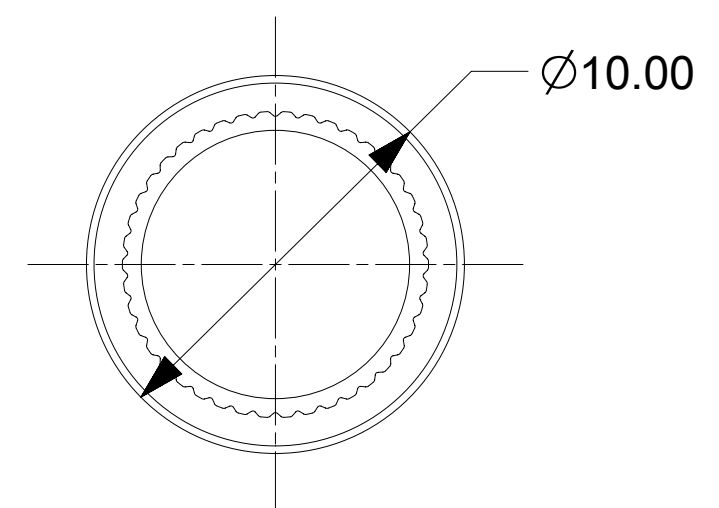
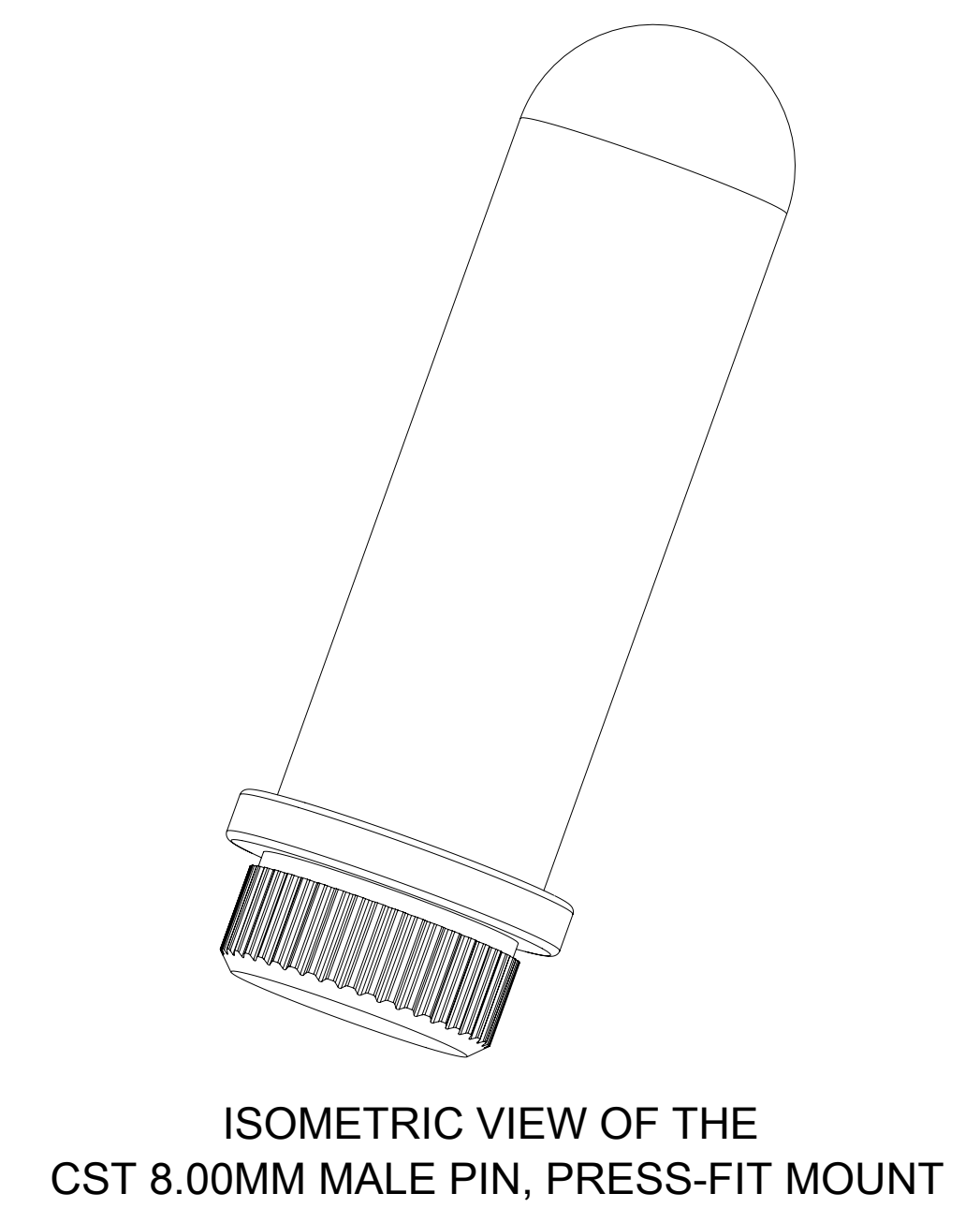
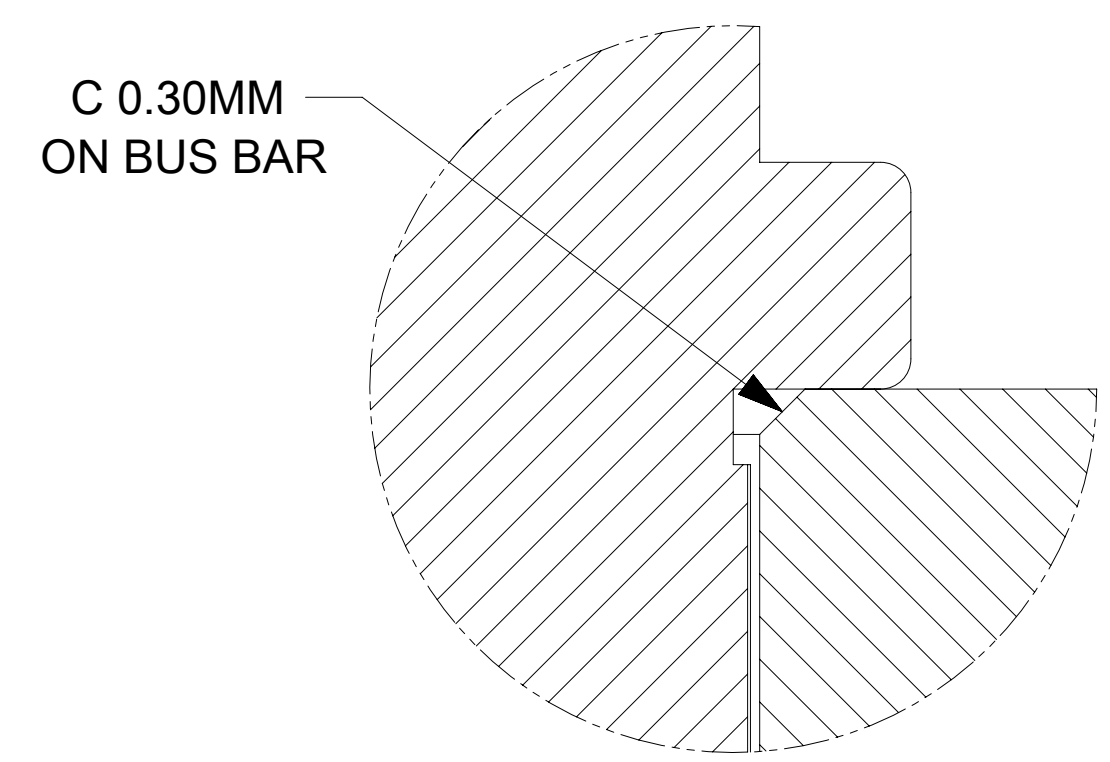
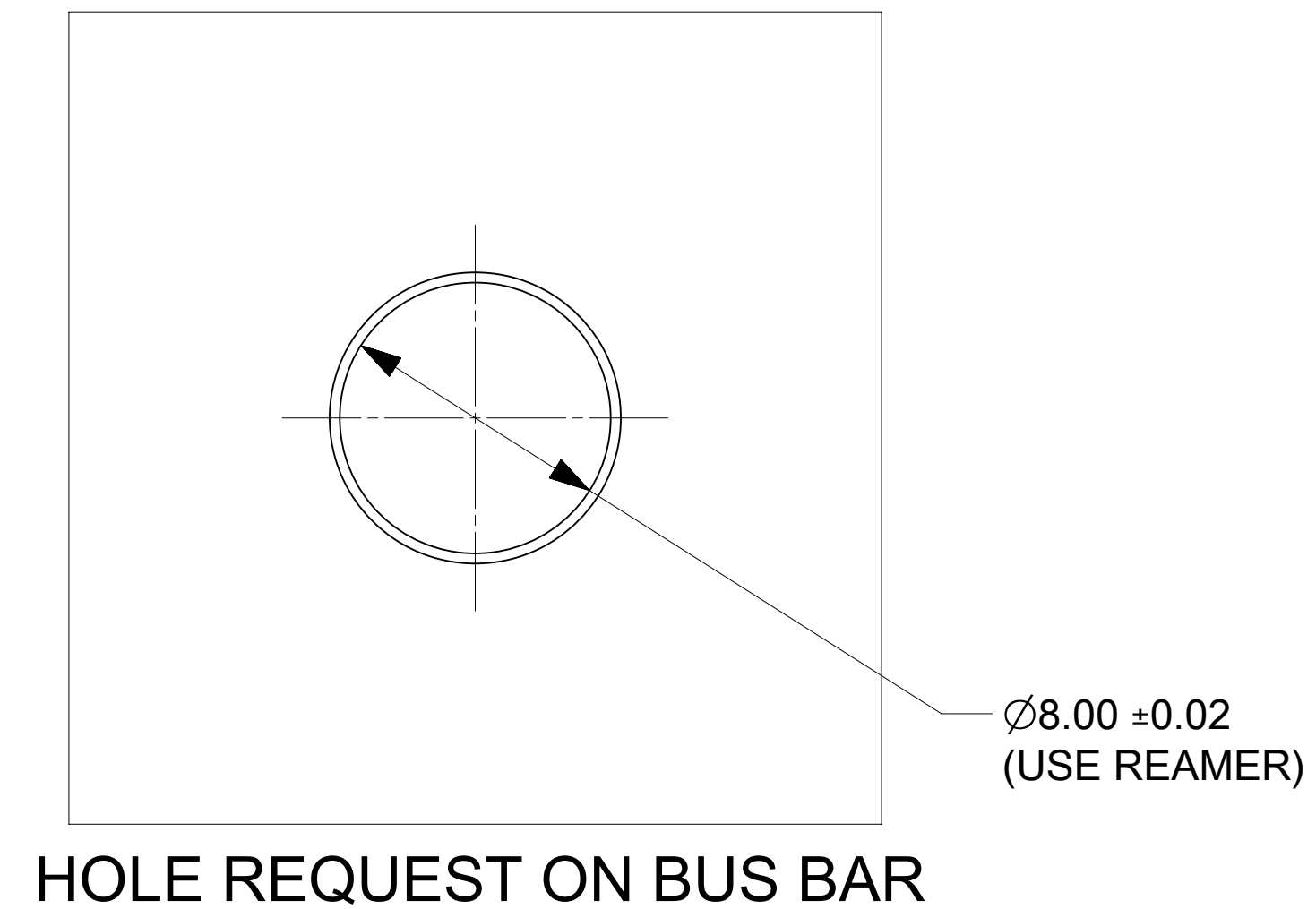
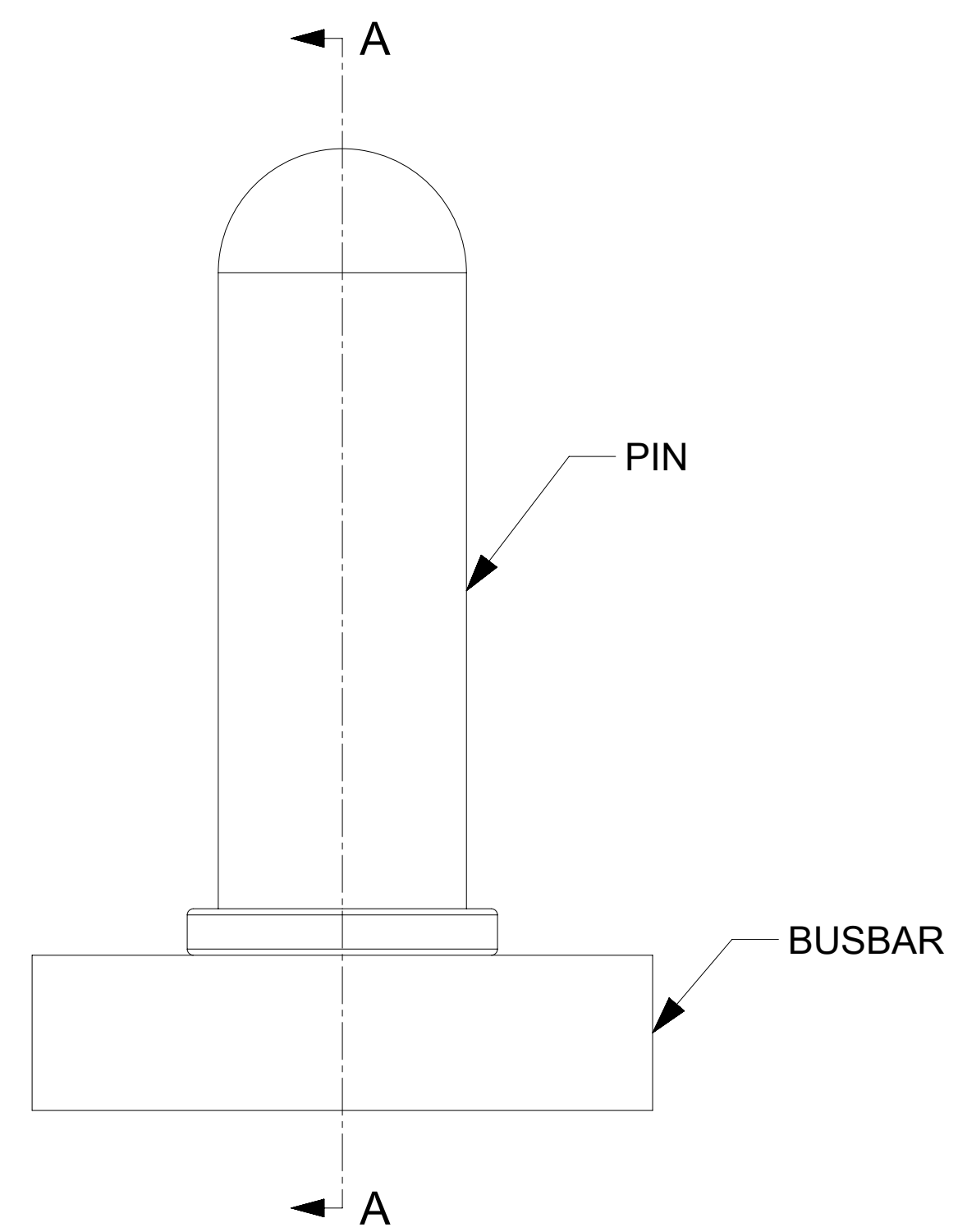
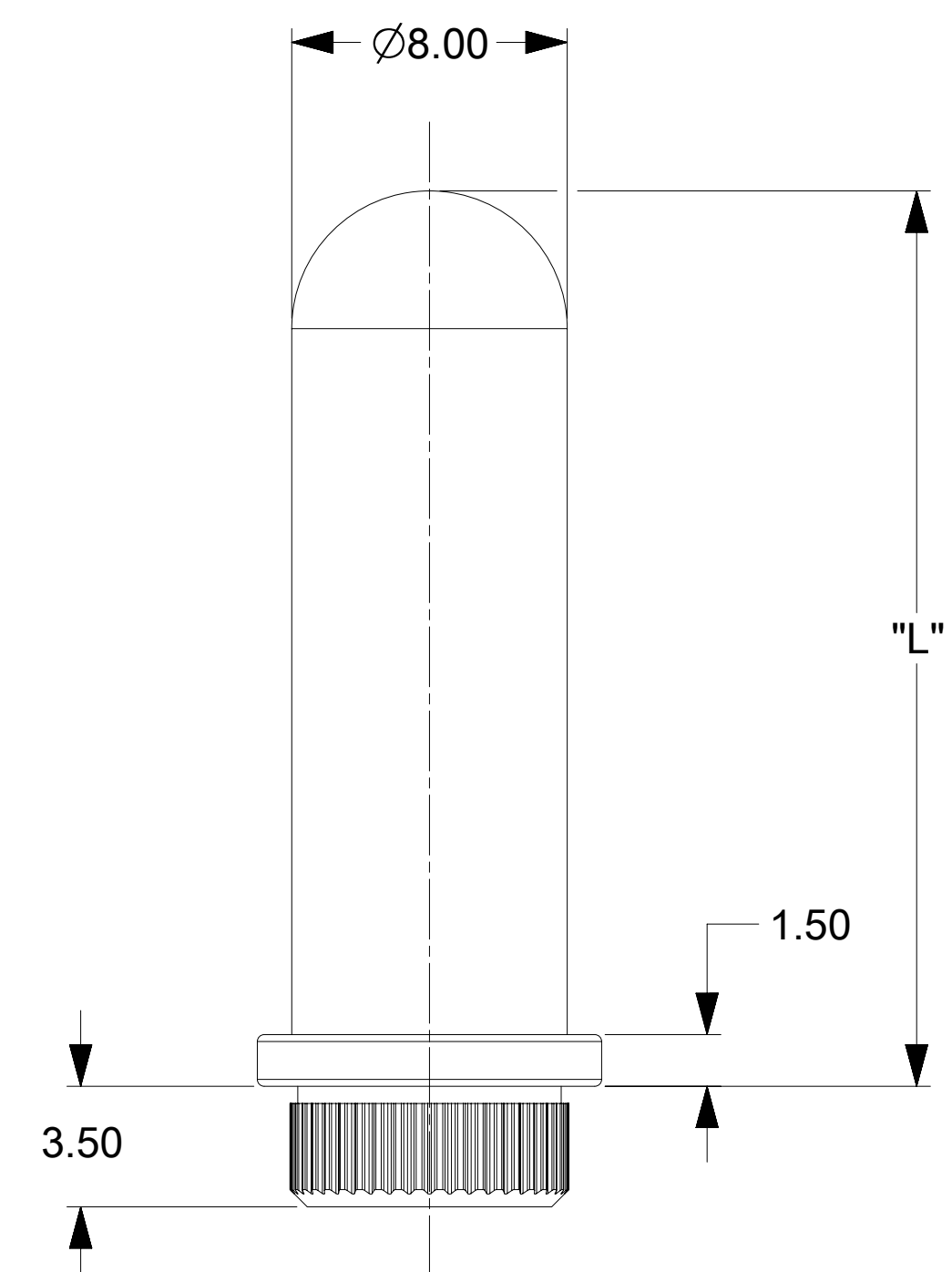


PART NUMBER	DIMENSION L
203263-0011	16.00
203263-0001	26.00
203263-0031	36.00
203263-0041	46.00
203263-0051	39.00
203263-0061	20.00
203263-0071	48.00

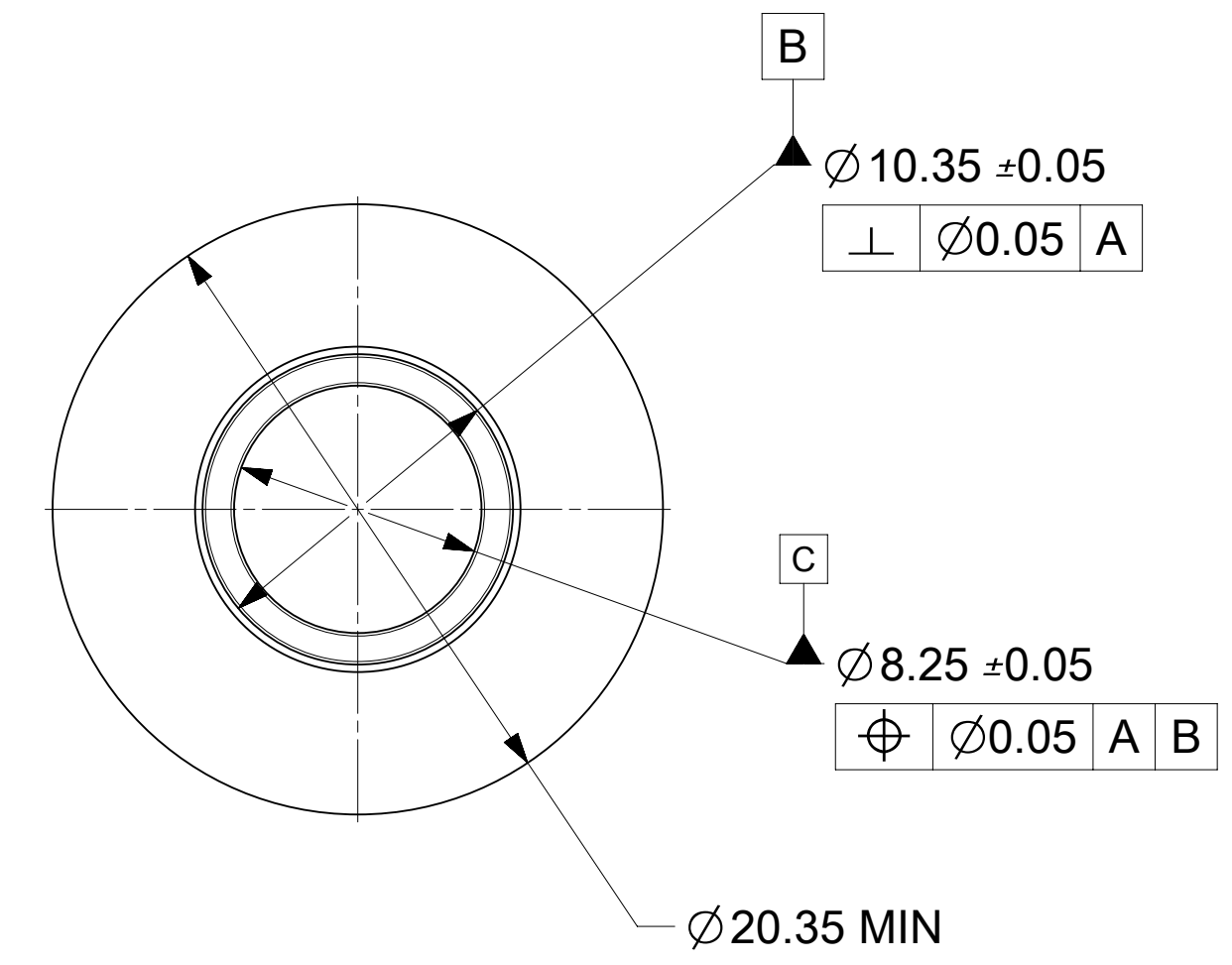
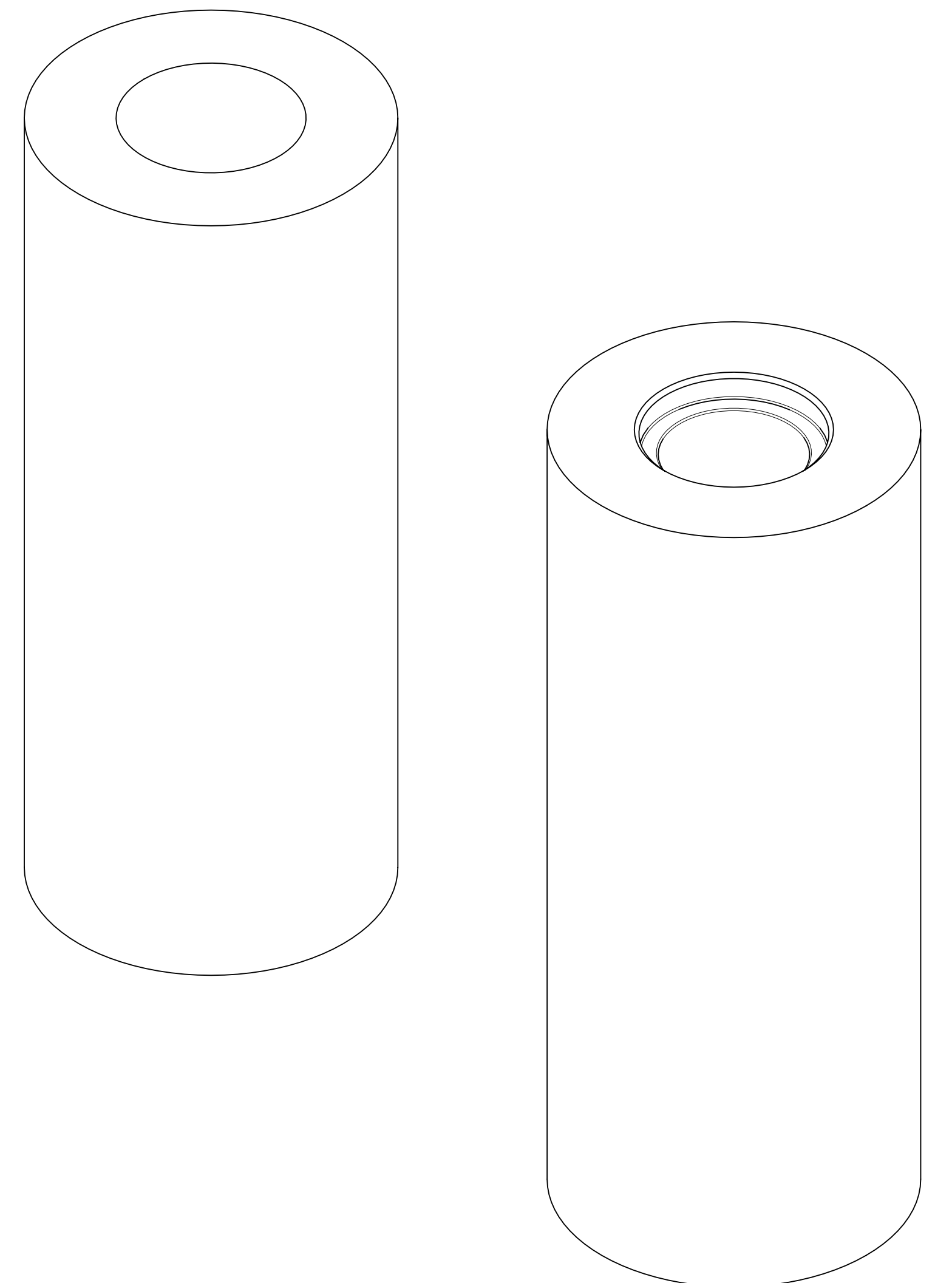
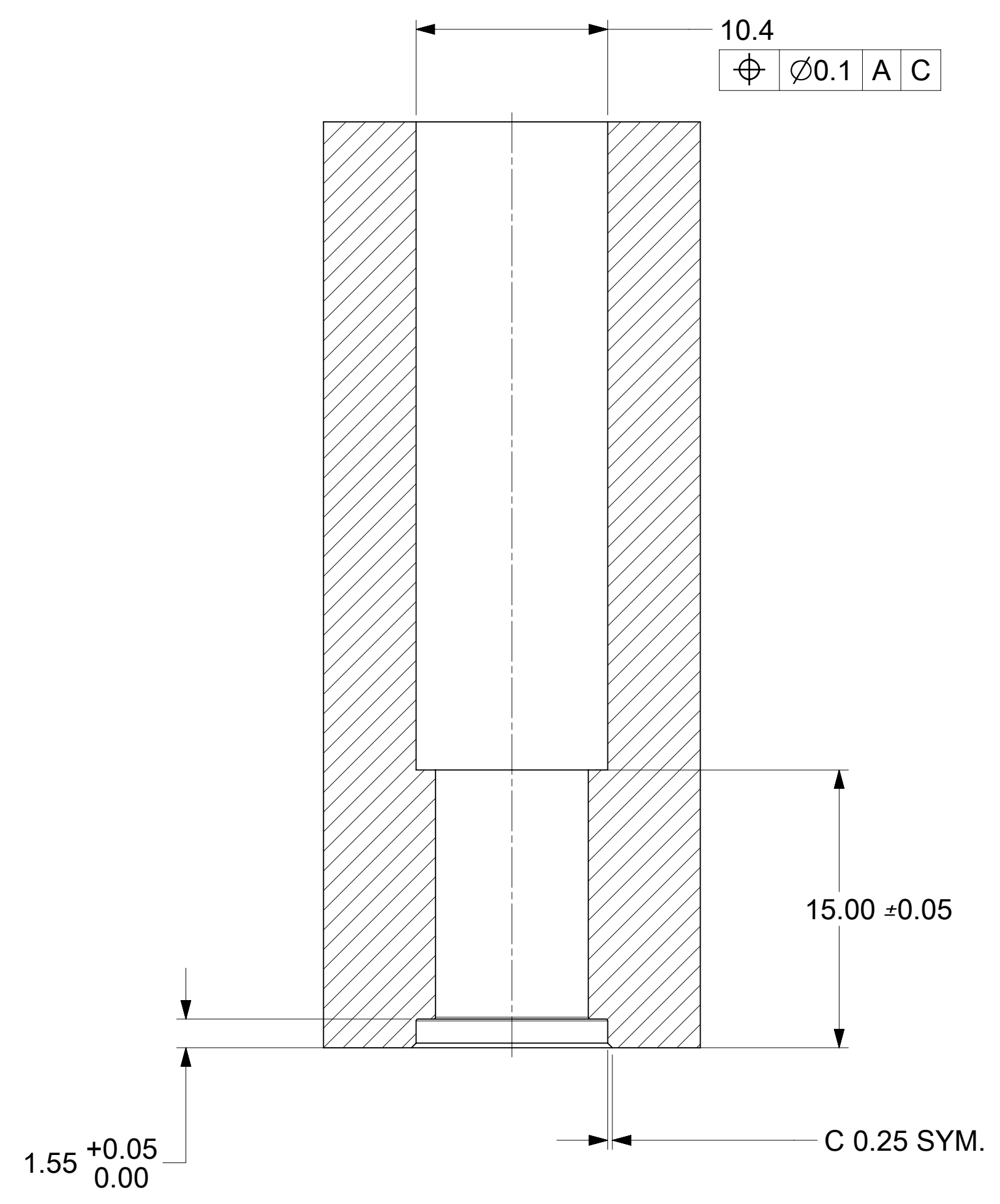
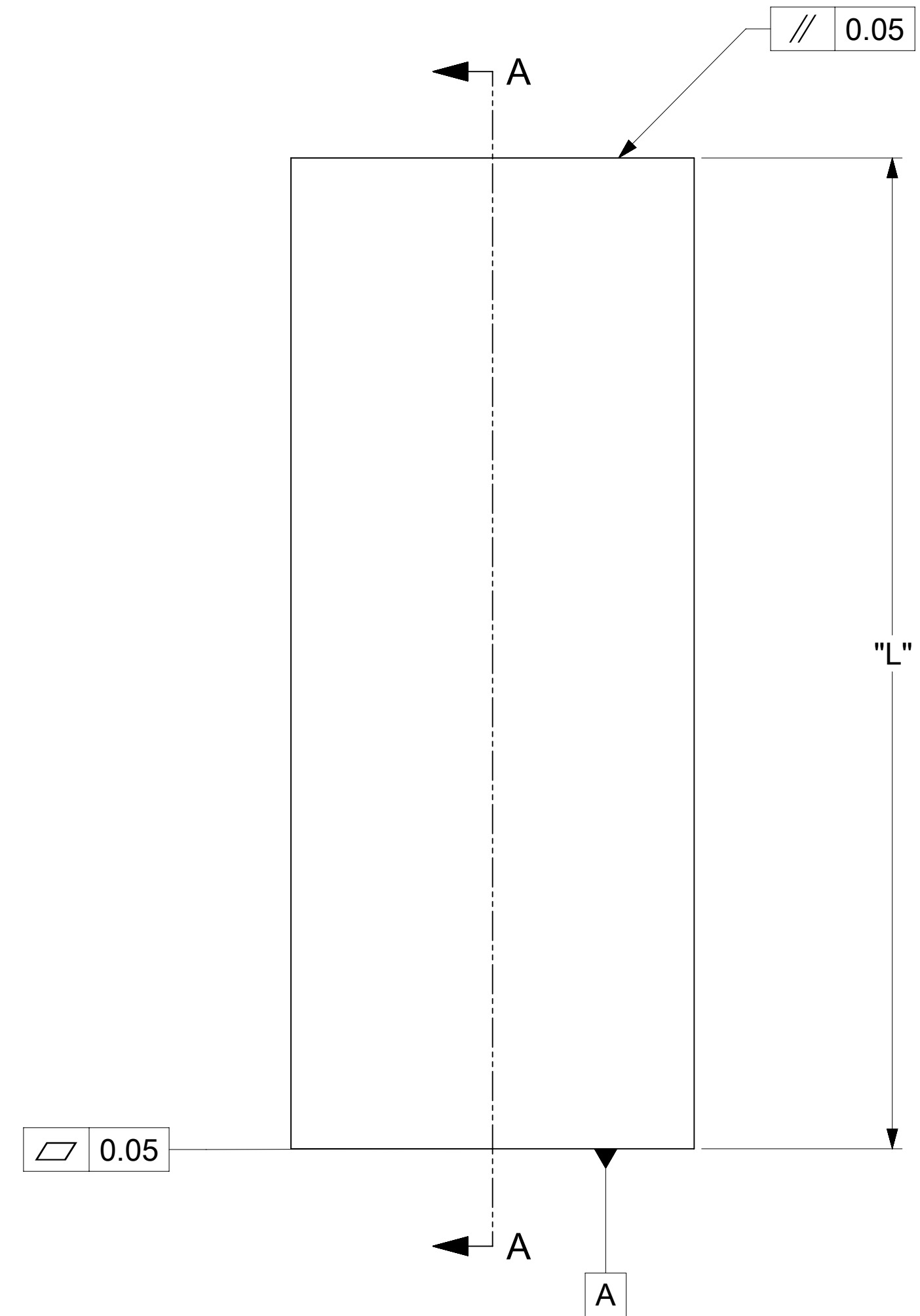


NOTES :

- MATERIALS :
  - BASE METAL: HIGH CONDUCTIVE COPPER ALLOY
  - PLATING ON BODY: 3.18 MICRON MIN SILVER OVER 1.27 MICRON MIN NICKEL
- PRODUCT SPECIFICATION : 2043130001-PS
- APPLICATION SPECIFICATION : 2043130001-AS
- PACKAGING SPECIFICATION : 2032630006-PK
- SILVER COMPONENTS WILL BE SUPPLIED TARNISH FREE BUT MAY TARNISH OVER TIME.
- MINIMUM RECOMMENDED BUSBAR THICKNESS IS 1.50MM

THIS DRAWING CONTAINS INFORMATION THAT IS PROPRIETARY TO MOLEX ELECTRONIC TECHNOLOGIES, LLC AND SHOULD NOT BE USED WITHOUT WRITTEN PERMISSION											
DIMENSION UNITS		SCALE		CURRENT REV DESC: UPDATED THE DESCRIPTION							
mm		NTS									
GENERAL TOLERANCES (UNLESS SPECIFIED)											
ANGULAR TOL		± 0.5°									
4 PLACES		±		EC NO: 726284							
3 PLACES		±		DRWN: SOURAJ 2022/10/26							
2 PLACES		± 0.15		CHK'D: SUVARS 2022/10/27							
1 PLACE		± 0.25		APPR: GSHARMA 2022/10/28							
0 PLACES		±		INITIAL REVISION:							
DRAFT WHERE APPLICABLE MUST REMAIN WITHIN DIMENSIONS				THIRD ANGLE PROJECTION		DRAWING		SERIES		MATERIAL NUMBER	
						D-SIZE		203263		203263	
						SEE TABLE		GENERAL MARKET		SHEET NUMBER	
										1 OF 1	

PIN LENGTH RANGE IN MM	DIMENSION "L" IN MM
UPTO 20	25.0
20-30	35.0
30-40	45.0
40-50	55.0



- NOTES:
1. MATERIAL: STAINLESS STEEL
  2. BREAK ALL SHARP CORNERS AND EDGES
  3. THE TOOL SHOULD BE FABRICATED BY THE CUSTOMER

THIS DRAWING CONTAINS INFORMATION THAT IS PROPRIETARY TO MOLEX ELECTRONIC TECHNOLOGIES, LLC AND SHOULD NOT BE USED WITHOUT WRITTEN PERMISSION											
DIMENSION UNITS		SCALE		CURRENT REV DESC: UPDATED THE NOTES							
mm		4:1		<p><b>molex</b></p> <p>CENTRALITY APPLICATION TOOLING FOR 8.0MM PIN</p> <p>PRODUCT CUSTOMER DRAWING</p>							
GENERAL TOLERANCES (UNLESS SPECIFIED)											
ANGULAR TOL ± 0.5°											
4 PLACES ±		EC NO: 813784									
3 PLACES ±		DRWN: SOURAJ 2024/12/05									
2 PLACES ± 0.05		CHK'D: SOURAJ 2025/02/25									
1 PLACE ± 0.1		APPR: HTHYAGARAJ 2025/02/26									
0 PLACES ±		INITIAL REVISION:		DOCUMENT NUMBER		DOC TYPE		DOC PART		REVISION	
DRAFT WHERE APPLICABLE MUST REMAIN WITHIN DIMENSIONS		THIRD ANGLE PROJECTION		DRAWING		SERIES		MATERIAL NUMBER		CUSTOMER	
		D-SIZE		219259		2192590008		GENERAL MARKET		SHEET NUMBER	
										1 OF 1	