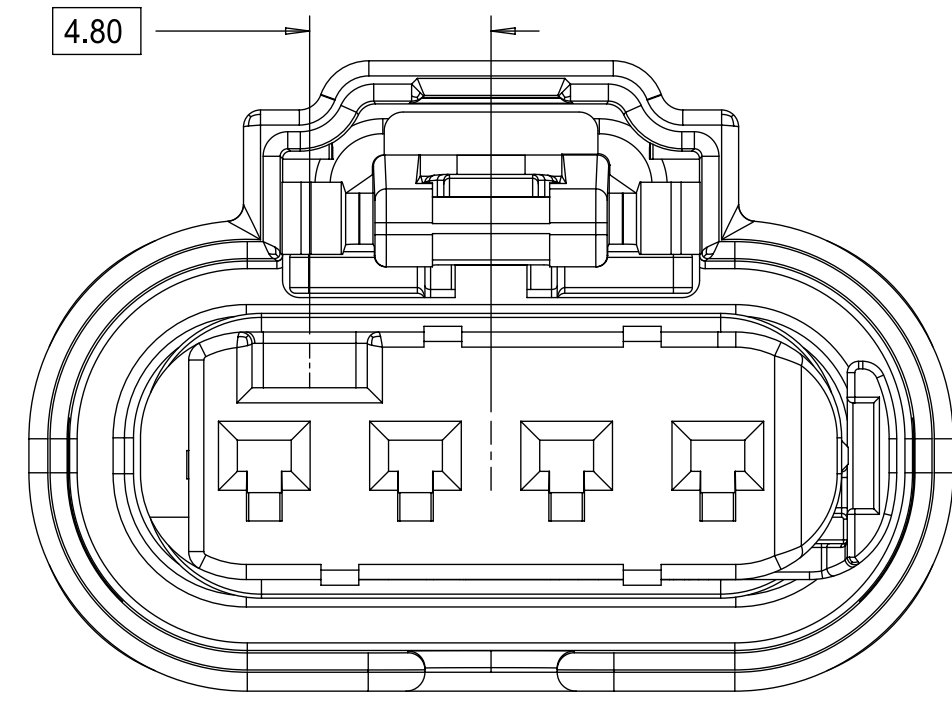
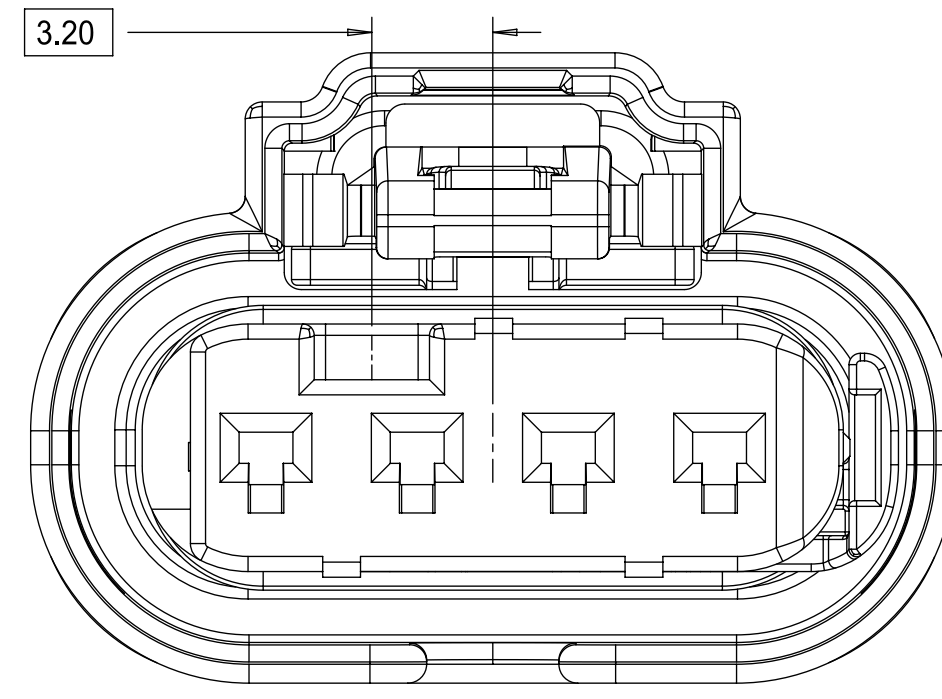


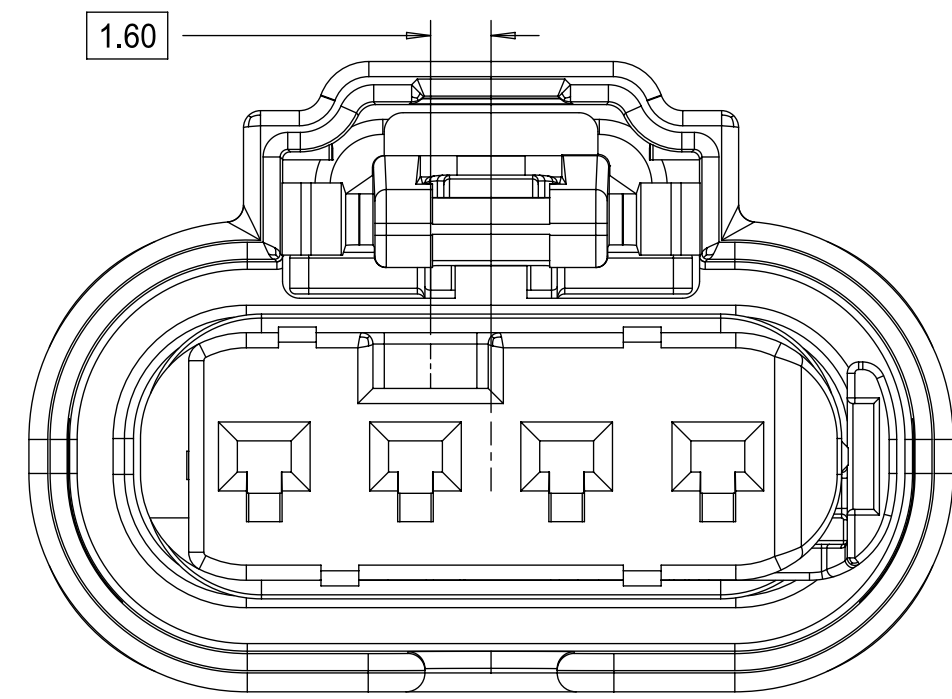
1x4 RECEPTACLE SEALED ASSEMBLY KEYING CONFIGURATIONS. FOR PART NUMBERS REFER TO BOM SHEET.



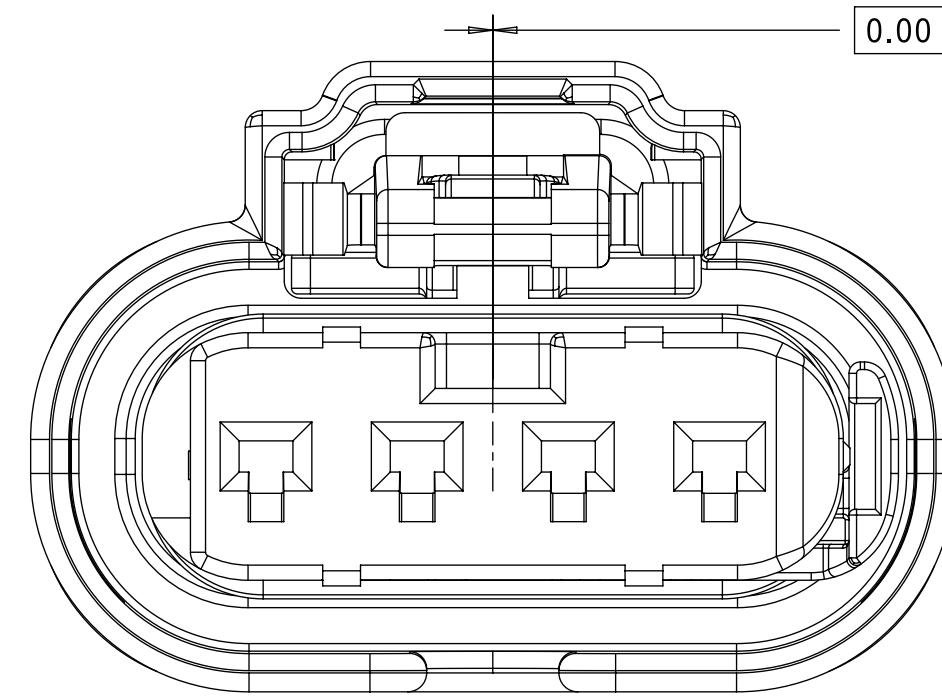
KEYING OPTION A



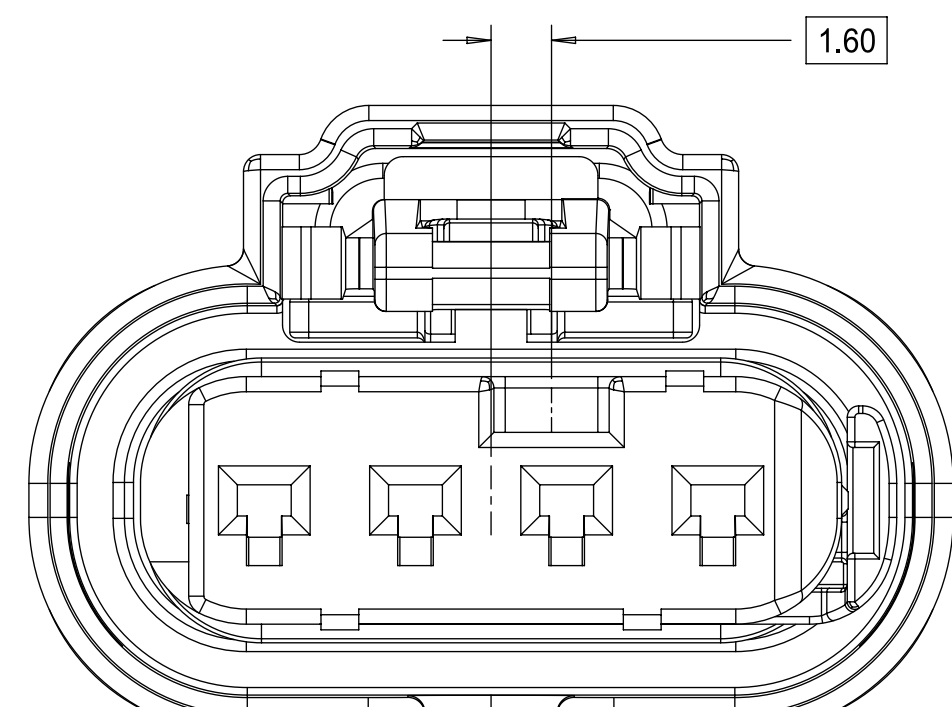
KEYING OPTION E



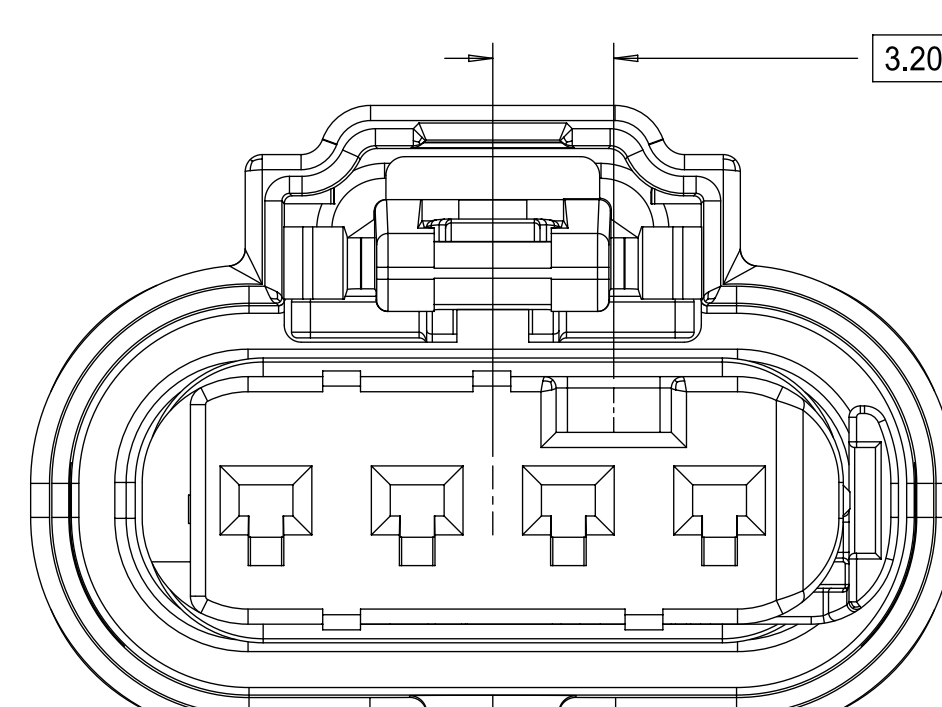
KEYING OPTION B



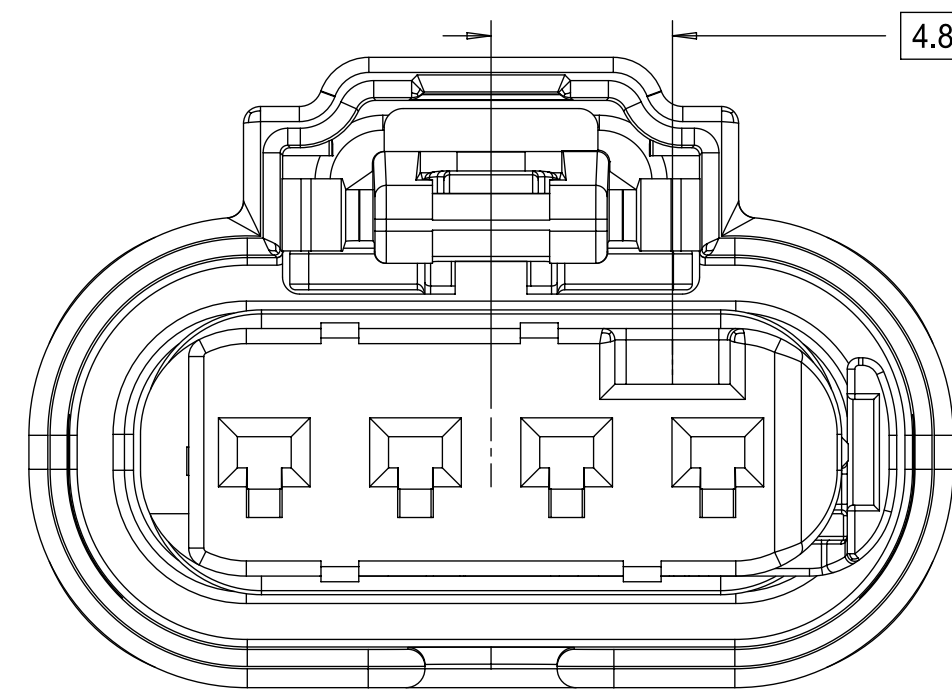
KEYING OPTION F



KEYING OPTION C



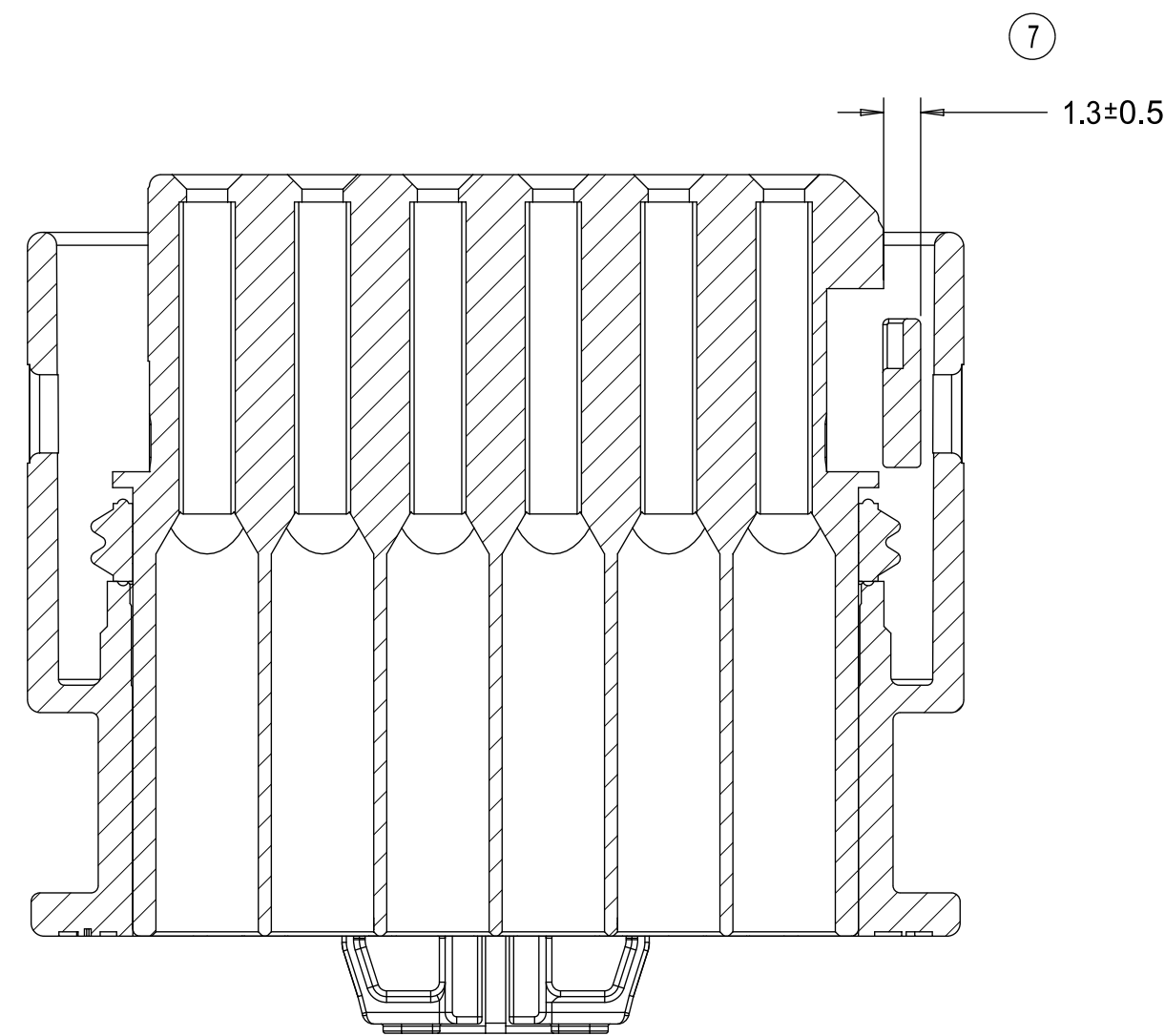
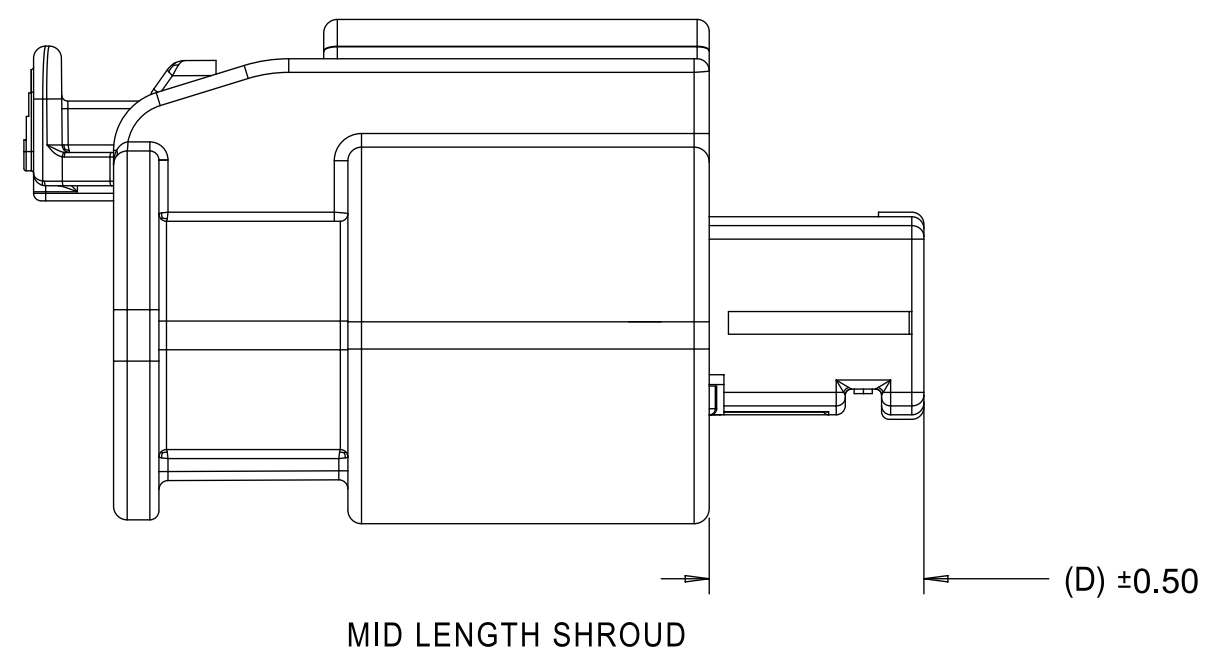
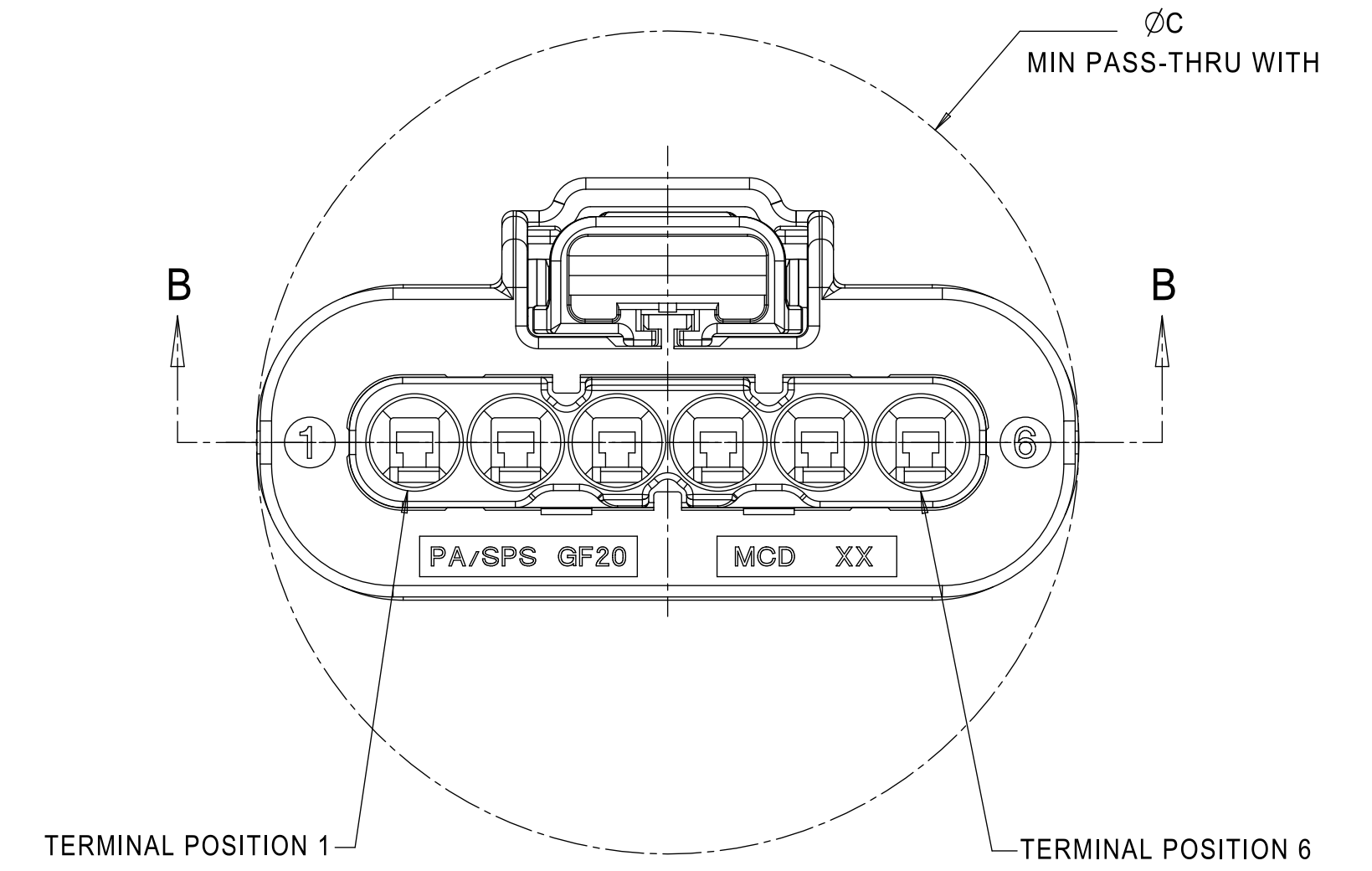
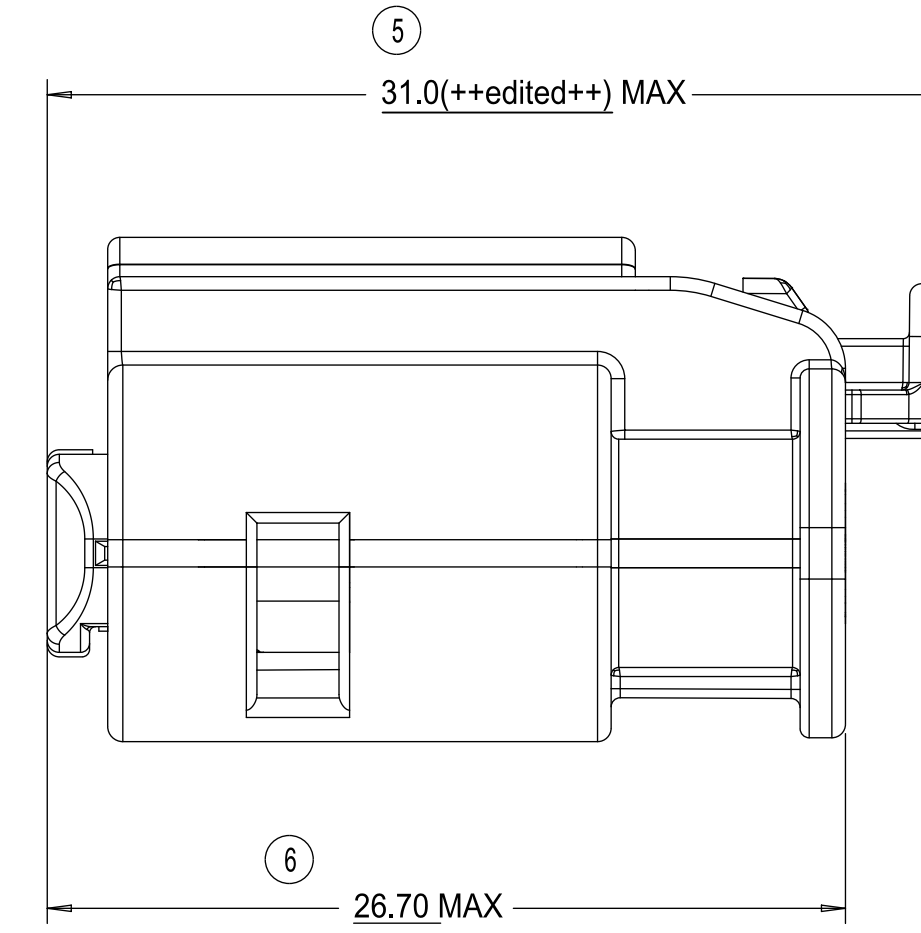
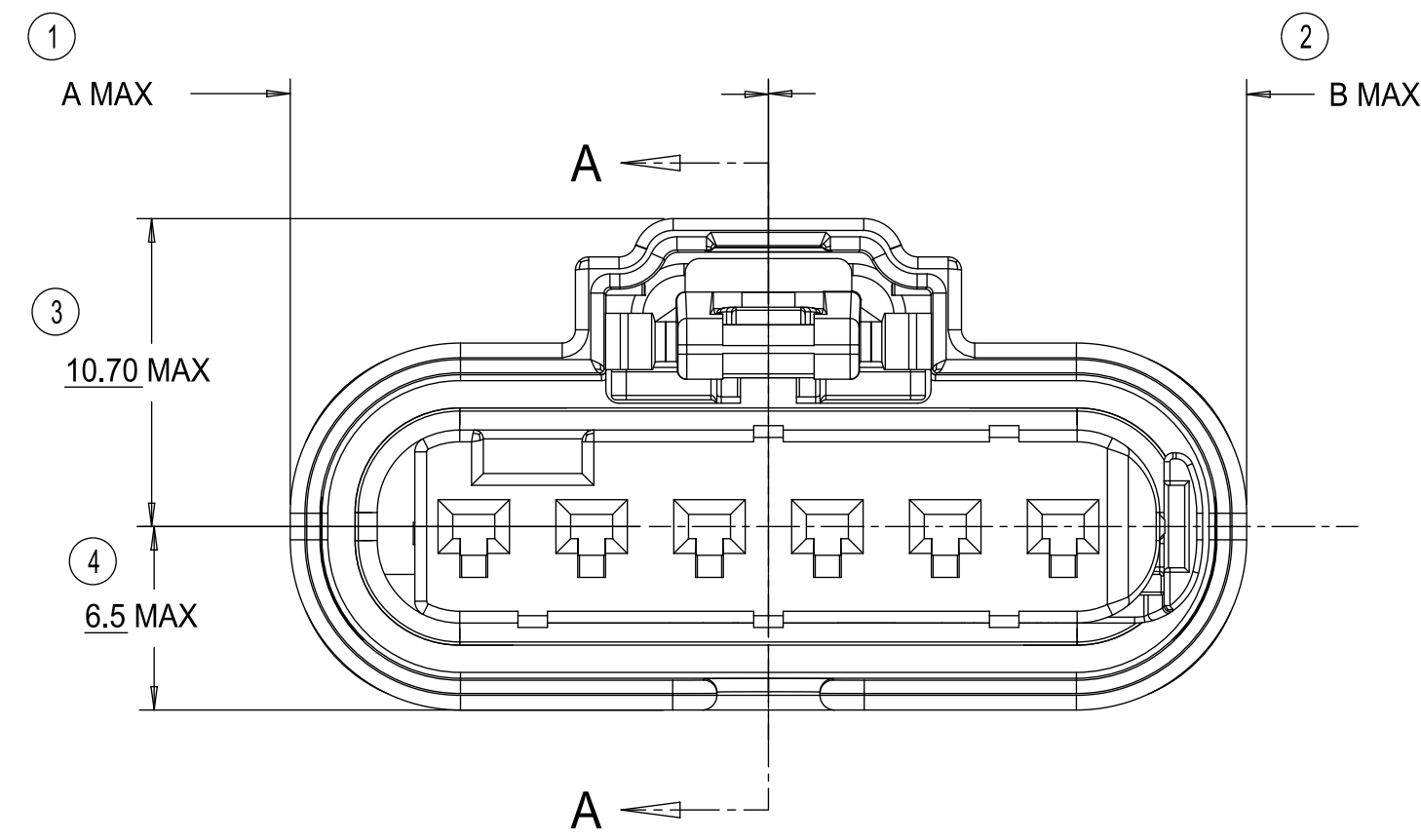
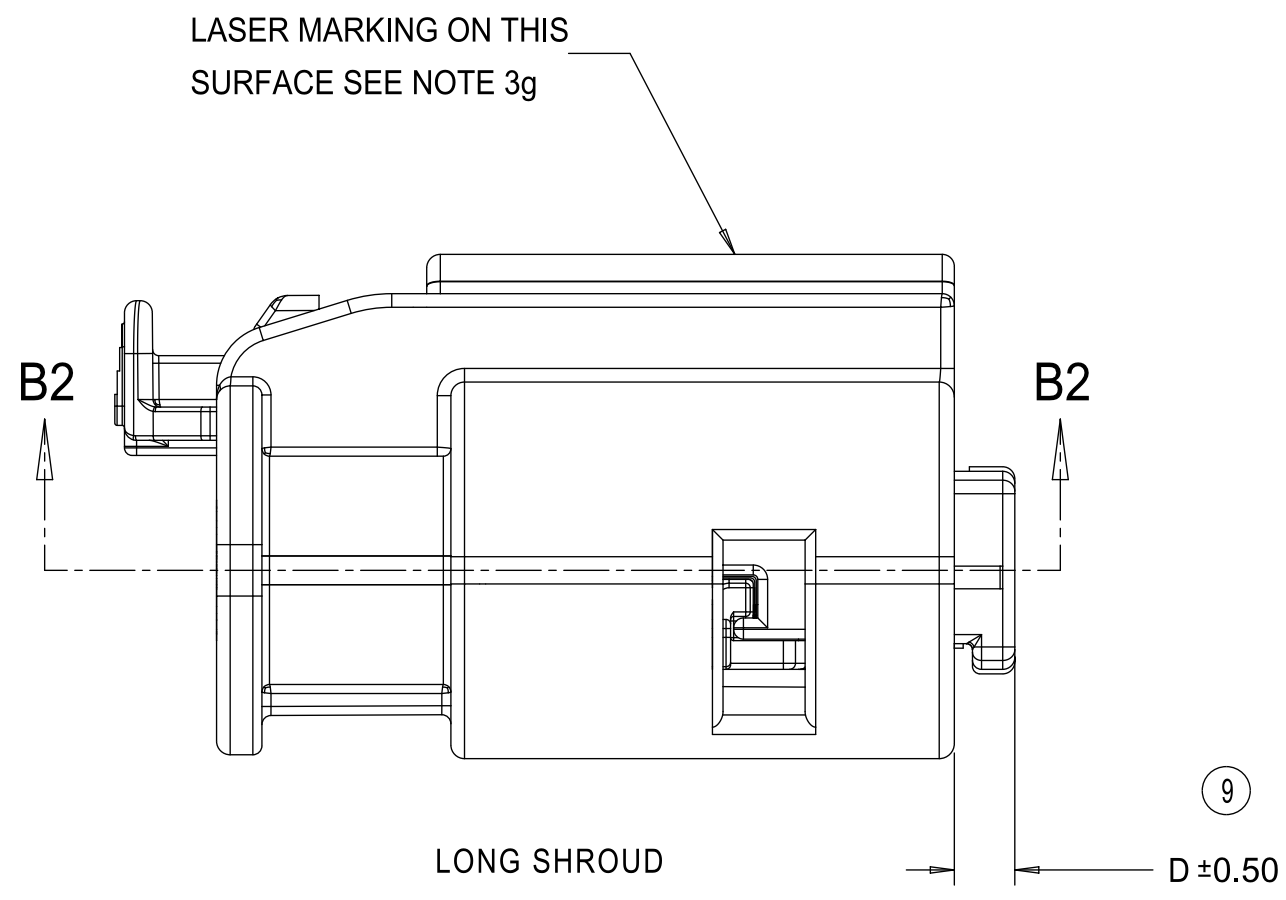
KEYING OPTION G



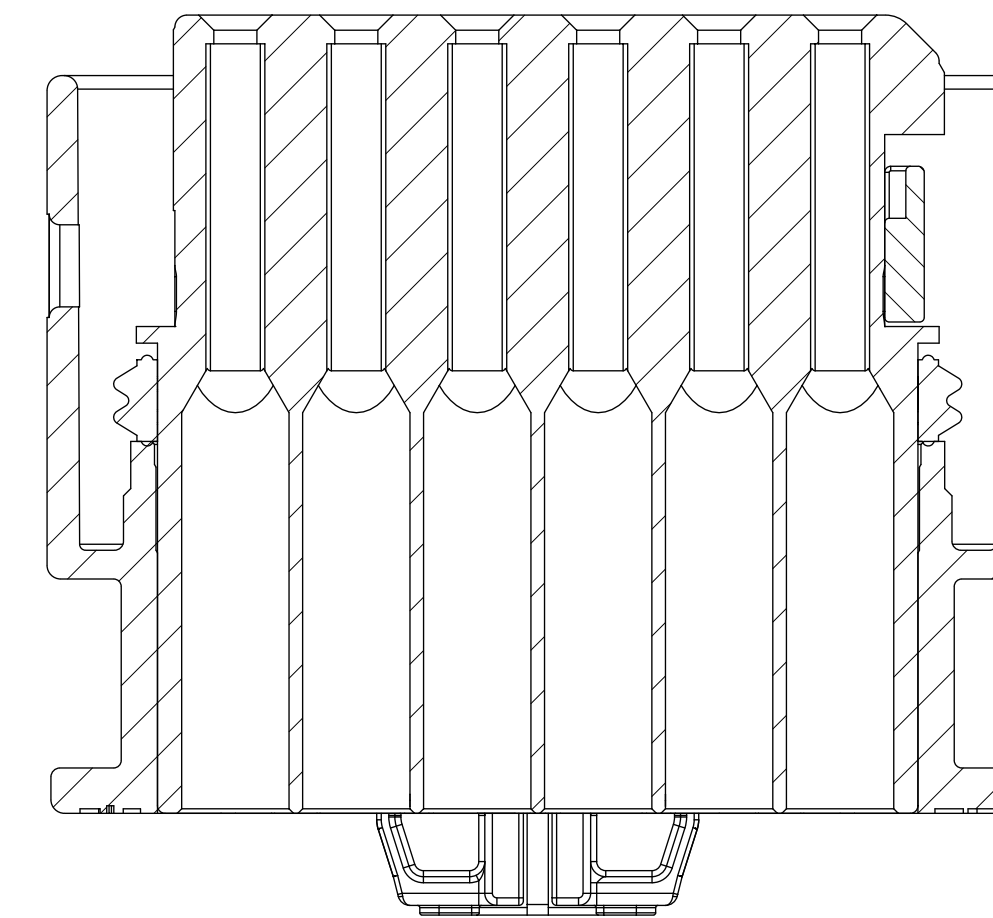
KEYING OPTION D

| | | | | | | | | | |
|---|--|---|--|----------------------------------|--|------------------------|--|--|--|
| QUALITY SYMBOLS ▽ = 0 ▽ = 0 ▽ = 0 ▽ = 0 ▽ = 0 ▽ = 0 ▽ = 0 ▽ = 0 ▽ = 0 | | THIS DRAWING CONTAINS INFORMATION THAT IS PROPRIETARY TO MOLEX ELECTRONIC TECHNOLOGIES, LLC AND SHOULD NOT BE USED WITHOUT WRITTEN PERMISSION | | DIMENSION UNITS MM | | SCALE 5:1 | | molex 1.2MM 1X4, 1X6 RECPT. SEALED ASSEMBLY CABLE SEAL 626759 - CHANGED CPA2 TO CPA2. ROLLING CHANGE AT GM. | |
| GENERAL TOLERANCES (UNLESS SPECIFIED) ANGULAR TOL ± 3 ° 4 PLACES ± 0 3 PLACES ± 0 2 PLACES ± 0.1 1 PLACE ± 0.2 0 PLACES ± 0.5 | | DRWN BY MVANSLAMBROU | | DATE 2012/05/03 | | CHKD BY DATE | | APPR BY GGA | |
| DRAFT WHERE APPLICABLE MUST REMAIN WITHIN DIMENSIONS | | DATE 2012/12/13 | | DRAWING SIZE D | | THIRO ANGLE PROJECTION | | SERIES 34900 | |
| MATERIAL NUMBER SEE BOM | | CUSTOMER GENERAL MARKET | | DOCUMENT NUMBER SD-34900-6001 | | DOC TYPE PSD | | DOC PART SHEET NUMBER 001 2 OF 7 | |

RECEPTACLE SEALED ASSEMBLY



SECTION B-B
INDEPENDENT SECONDARY LOCK (ISL)
SHOWN IN THE PRE-STAGED POSITION



SECTION B2-B2
INDEPENDENT SECONDARY LOCK (ISL)
SHOWN IN THE FINAL-LOCK POSITION

| | A | B | C | D |
|-----------------------|------|------|------|------|
| 1x6 MID LENGTH SHROUD | 16.5 | 16.5 | 33.0 | 6.70 |
| 1x4 MID LENGTH SHROUD | 16.5 | 16.5 | 25.0 | 6.70 |
| 1x6 LONG SHROUD | 16.5 | 16.5 | 33.0 | 2.00 |
| 1x4 LONG SHROUD | 12.5 | 12.5 | 25.0 | 2.00 |
| DESCRIPTION | A | B | C | D |

CHARTED DIMENSIONS

| | | | | | |
|--|---|---|------------------------------|----------------------------|----------------------------------|
| QUALITY SYMBOLS | THIS DRAWING CONTAINS INFORMATION THAT IS PROPRIETARY TO MOLEX ELECTRONIC TECHNOLOGIES, LLC AND SHOULD NOT BE USED WITHOUT WRITTEN PERMISSION | | DIMENSION UNITS MM | SCALE 4:1 | |
| | GENERAL TOLERANCES (UNLESS SPECIFIED) ANGULAR TOL ± 3 ° 4 PLACES ± 0 3 PLACES ± 0 2 PLACES ± 0.1 1 PLACE ± 0.2 0 PLACES ± 0.5 DRAFT WHERE APPLICABLE MUST REMAIN WITHIN DIMENSIONS | DRWN BY MVANSLAMBROU | DATE 2012/05/03 | CHKD BY DATE | |
| EC NO: CO-00027295 DRWN: Manikya MD CHK'D: Abhishek Gajare REV APPR: sandes13 | ADDED BLUE RESIN PART NUMBERS ##### | SERIES 34900 | MATERIAL NUMBER SEE BOM | CUSTOMER GENERAL MARKET | DOCUMENT NUMBER SD-34900-6001 |
| RELEASE STATUS 19 | RELEASE DATE 18 02-Jul-2025 | 17 16 15 14 13 12 11 10 9 8 7 6 5 4 3 2 1 | DOC TYPE PSD | DOC PART 001 | SHEET NUMBER 4 OF 7 |

1X4 RECEPTACLE SEALED ASSEMBLY BOM SHEET 1

| KEY OPTION | CONNECTOR HOUSING COLOR | TERMINAL HOUSING COLOR | OUTER HOUSING SHROUD LENGTH | ASSEMBLY PART NUMBER | CHC | CHB | A | B | C | D | E | F | G | CPA1 | CPA2 | PRODUCTION TOOL STATUS | COMMENTS | |
|----------------------|-------------------------|------------------------|-----------------------------|----------------------|-----|-----|------|---|---|---|---|---|---|------|---------|------------------------|----------|---|
| KEY OPTION A | BLUE | BLACK | LONG | 34900-4260 | | | | | | | | | | | CPA2 | SALABLE | 1 2 | |
| KEY OPTION A | BLUE | BLACK | LONG | 34900-4160 | | | | | | | | | | CPA1 | SALABLE | 1 2 | | |
| KEY OPTION G | BLACK | LIGHT GRAY | LONG | 34900-4226 | | CHB | | | | | | | | | CPA2 | SALABLE | 1 2 | |
| KEY OPTION F | BLACK | BLACK | LONG | 34900-4225 | | CHB | | | | | | F | | | CPA2 | SALABLE | 1 2 | |
| KEY OPTION E | BLACK | DARK GRAY | LONG | 34900-4224 | | CHB | | | | | E | | | | CPA2 | SALABLE | 1 2 | |
| KEY OPTION D | BLACK | LIGHT GRAY | LONG | 34900-4223 | | CHB | | | | D | | | | | CPA2 | SALABLE | 1 2 | |
| KEY OPTION C | BLACK | DARK GRAY | LONG | 34900-4222 | | CHB | | | | C | | | | | CPA2 | SALABLE | 1 2 | |
| KEY OPTION B | BLACK | STONE GRAY | LONG | 34900-4221 | | CHB | | | | B | | | | | CPA2 | SALABLE | 1 2 | |
| KEY OPTION A | BLACK | BLACK | LONG | 34900-4220 | | CHB | | | | A | | | | | CPA2 | SALABLE | 1 2 | |
| KEY OPTION G | YELLOW | LIGHT GRAY | LONG | 34900-4216 | | CHY | | | | | | | G | | CPA2 | SALABLE | 1 2 | |
| KEY OPTION F | YELLOW | BLACK | LONG | 34900-4215 | | CHY | | | | | | F | | | CPA2 | SALABLE | 1 2 | |
| KEY OPTION E | YELLOW | DARK GRAY | LONG | 34900-4214 | | CHY | | | | | E | | | | CPA2 | SALABLE | 1 2 | |
| KEY OPTION D | YELLOW | LIGHT GRAY | LONG | 34900-4213 | | CHY | | | | D | | | | | CPA2 | SALABLE | 1 2 | |
| KEY OPTION C | YELLOW | DARK GRAY | LONG | 34900-4212 | | CHY | | | | C | | | | | CPA2 | SALABLE | 1 2 | |
| KEY OPTION B | YELLOW | STONE GRAY | LONG | 34900-4211 | | CHY | | | | B | | | | | CPA2 | SALABLE | 1 2 | |
| KEY OPTION A | YELLOW | BLACK | LONG | 34900-4210 | | CHY | | | | A | | | | | CPA2 | SALABLE | 1 2 | |
| KEY OPTION G | BLACK | LIGHT GRAY | MID LENGTH | 34900-4136 | | | CHMB | | | | | | G | | CPA2 | CONCEPT | 1 2 | |
| KEY OPTION F | BLACK | BLACK | MID LENGTH | 34900-4135 | | | CHMB | | | | | F | | | CPA2 | CONCEPT | 1 2 | |
| KEY OPTION E | BLACK | DARK GRAY | MID LENGTH | 34900-4134 | | | CHMB | | | | E | | | | CPA2 | CONCEPT | 1 2 | |
| KEY OPTION D | BLACK | LIGHT GRAY | MID LENGTH | 34900-4133 | | | CHMB | | | D | | | | | CPA2 | CONCEPT | 1 2 | |
| KEY OPTION C | BLACK | DARK GRAY | MID LENGTH | 34900-4132 | | | CHMB | | | C | | | | | CPA2 | CONCEPT | 1 2 | |
| KEY OPTION B | BLACK | STONE GRAY | MID LENGTH | 34900-4131 | | | CHMB | | | B | | | | | CPA2 | CONCEPT | 1 2 | |
| KEY OPTION A | BLACK | BLACK | MID LENGTH | 34900-4130 | | | CHMB | | | A | | | | | CPA2 | CONCEPT | 1 2 | |
| KEY OPTION G | BLACK | LIGHT GRAY | LONG | 34900-4126 | | CHB | | | | | | | G | CPA1 | SALABLE | 1 2 | | |
| KEY OPTION F | BLACK | BLACK | LONG | 34900-4125 | | CHB | | | | | | F | | CPA1 | SALABLE | 1 2 | | |
| KEY OPTION E | BLACK | DARK GRAY | LONG | 34900-4124 | | CHB | | | | | E | | | CPA1 | SALABLE | 1 2 | | |
| KEY OPTION D | BLACK | LIGHT GRAY | LONG | 34900-4123 | | CHB | | | | D | | | | CPA1 | SALABLE | 1 2 | | |
| KEY OPTION C | BLACK | DARK GRAY | LONG | 34900-4122 | | CHB | | | | C | | | | CPA1 | SALABLE | 1 2 | | |
| KEY OPTION B | BLACK | STONE GRAY | LONG | 34900-4121 | | CHB | | | | B | | | | CPA1 | SALABLE | 1 2 | | |
| KEY OPTION A | BLACK | BLACK | LONG | 34900-4120 | | CHB | | | | A | | | | CPA1 | SALABLE | 1 2 | | |
| KEY OPTION G | YELLOW | LIGHT GRAY | LONG | 34900-4116 | | CHY | | | | | | | G | CPA1 | SALABLE | 1 2 | | |
| KEY OPTION F | YELLOW | BLACK | LONG | 34900-4115 | | CHY | | | | | | F | | CPA1 | SALABLE | 1 2 | | |
| KEY OPTION E | YELLOW | DARK GRAY | LONG | 34900-4114 | | CHY | | | | | E | | | CPA1 | SALABLE | 1 2 | | |
| KEY OPTION D | YELLOW | LIGHT GRAY | LONG | 34900-4113 | | CHY | | | | D | | | | CPA1 | SALABLE | 1 2 | | |
| KEY OPTION C | YELLOW | DARK GRAY | LONG | 34900-4112 | | CHY | | | | C | | | | CPA1 | SALABLE | 1 2 | | |
| KEY OPTION B | YELLOW | STONE GRAY | LONG | 34900-4111 | | CHY | | | | B | | | | CPA1 | SALABLE | 1 2 | | |
| KEY OPTION A | YELLOW | BLACK | LONG | 34900-4110 | | CHY | | | | A | | | | CPA1 | SALABLE | 1 2 | | |
| ASSEMBLY DESCRIPTION | CONNECTOR HOUSING COLOR | TERMINAL HOUSING COLOR | OUTER HOUSING SHROUD LENGTH | ASSEMBLY PART NUMBER | | | A | B | C | D | E | F | G | CPA1 | CPA2 | PRODUCTION TOOL STATUS | COMMENTS | DESIGNED TO MATE WITH DEVICE CONNECTION |

| RING SEAL | COLOR | MATERIAL | COMMENTS |
|----------------------------------|------------|----------------|------------------------------------|
| ISL | NATURAL | SPS/NYLON GF20 | |
| CPA2 | RED | PBT GF30 | |
| CPA1 | RED | PBT GF30 | |
| TERMINAL HOUSING KEYING OPTION G | LIGHT GRAY | SPS/NYLON GF20 | |
| TERMINAL HOUSING KEYING OPTION F | BLACK | SPS/NYLON GF20 | |
| TERMINAL HOUSING KEYING OPTION E | DARK GRAY | SPS/NYLON GF20 | |
| TERMINAL HOUSING KEYING OPTION D | LIGHT GRAY | SPS/NYLON GF20 | |
| TERMINAL HOUSING KEYING OPTION C | DARK GRAY | SPS/NYLON GF20 | |
| TERMINAL HOUSING KEYING OPTION B | STONE GRAY | SPS/NYLON GF20 | |
| TERMINAL HOUSING KEYING OPTION A | BLACK | SPS/NYLON GF20 | |
| MID LENGTH CONNECTOR HOUSING | BLACK | SPS/NYLON GF20 | |
| CONNECTOR HOUSING | BLUE | SPS/NYLON GF20 | UPDATED LATCH |
| CONNECTOR HOUSING | BLACK | SPS/NYLON GF20 | UPDATED LATCH |
| CONNECTOR HOUSING | YELLOW | SPS/NYLON GF20 | UPDATED LATCH |
| WIRE DRESS COVER STRAIGHT | BLACK | PA66 | |
| WIRE DRESS COVER LEFT | BLACK | PA66 | SOLD SEPARATELY SEE SD-160091-0001 |
| WIRE DRESS COVER RIGHT | BLACK | PA66 | |
| DESCRIPTION | COLOR | MATERIAL | COMMENTS |

BOM/APPLICABLE COMPONENTS TABLE

LEGEND TABLE

| ABREVIATION | COMPONENT |
|-------------|---|
| CHY | CONNECTOR HOUSING YELLOW |
| CHB | CONNECTOR HOUSING BLACK |
| CHC | CONNECTOR HOUSING BLUE(CYAN) |
| CHBM | CONNECTOR HOUSING BLACK MID SHROUD |
| A | TERMINAL HOUSING KEY A |
| B | TERMINAL HOUSING KEY B |
| C | TERMINAL HOUSING KEY C |
| D | TERMINAL HOUSING KEY D |
| E | TERMINAL HOUSING KEY E |
| F | TERMINAL HOUSING KEY F |
| G | TERMINAL HOUSING KEY G |
| CPA1 | CPA VERSION 1 |
| CPA2 | CPA VERSION 2 |
| ISL | ISL |
| RING SEAL | RING SEAL |
| 1 | USCAR INTERFACE 120-S-004-1-202 SEE NOTE 1f FOR WEBSITE |
| 2 | MOLEX INLINE BLADE CONNECTOR SD-34899-6001 |

| | | | |
|---|--|---|---|
| QUALITY SYMBOLS | THIS DRAWING CONTAINS INFORMATION THAT IS PROPRIETARY TO MOLEX ELECTRONIC TECHNOLOGIES, LLC AND SHOULD NOT BE USED WITHOUT WRITTEN PERMISSION EC NO: CO-00027295 DRWN: Manikya MD CHKD: Abhishek Gajare REV APPR: sandes13 | DIMENSION UNITS: MM SCALE: 5:1 DRWN BY: MVANSLAMBROU DATE: 2012/05/03 CHKD BY: _____ DATE: _____ APPR BY: GGA DATE: 2012/12/13 | 1.2MM 1X4, 1X6 RECPT. SEALED ASSEMBLY CABLE SEAL 626759 - CHANGED CPA2 TO CPA2. ROLLING CHANGE AT GM. |
| GENERAL TOLERANCES (UNLESS SPECIFIED) ANGULAR TOL ± 3 ° 4 PLACES ± 0 3 PLACES ± 0 2 PLACES ± 0.1 1 PLACE ± 0.2 0 PLACES ± 0.5 DRAFT WHERE APPLICABLE MUST REMAIN WITHIN DIMENSIONS | | SERIES: 34900 MATERIAL NUMBER: SEE BOM CUSTOMER: GENERAL MARKET | DOCUMENT NUMBER: SD-34900-6001 DOC TYPE: PSD DOC PART: 001 SHEET NUMBER: 5 OF 7 |

1X6 RECEPTACLE SEALED ASSEMBLY BOM SHEET 1

| KEYING OPTION | CONNECTOR HOUSING COLOR | TERMINAL CAVITY COLOR | OUTER HOUSING SHROUD LENGTH | ASSEMBLY PART NUMBER | CHC | CHMB | A | B | C | D | CPA1 | CPA2 | STATUS | COMMENTS | DESIGNED TO MATE WITH DEVICE CONNECTION | |
|----------------------|-------------------------|-----------------------|-----------------------------|----------------------|------|------|------|---|---|------|------|------|---------|----------|---|---|
| KEYING OPTION A | BLUE | BLACK | LONG | 34900-6260 | | | CHC | | | | | CPA2 | SALABLE | | 1 2 | |
| KEYING OPTION A | BLUE | BLACK | LONG | 34900-6160 | | | CHC | | | | CPA1 | | SALABLE | | 1 2 | |
| KEYING OPTION D | BLACK | STONE GRAY | MID LENGTH | 34900-6230 | | | CHMB | | | D | | CPA2 | SALABLE | | 1 2 3 | |
| KEYING OPTION C | BLACK | DARK GRAY | MID LENGTH | 34900-6221 | | | CHMB | | C | | | CPA2 | SALABLE | | 1 2 3 | |
| KEYING OPTION B | BLACK | LIGHT GRAY | MID LENGTH | 34900-6228 | | | CHMB | B | | | | CPA2 | SALABLE | | 1 2 3 | |
| KEYING OPTION A | BLACK | BLACK | MID LENGTH | 34900-6219 | | | CHMB | A | | | | CPA2 | SALABLE | | 1 2 3 | |
| KEYING OPTION D | BLACK | STONE GARY | LONG | 34900-6243 | | | CHLB | | | D | | CPA2 | SALABLE | | 1 2 | |
| KEYING OPTION C | BLACK | DARK GRAY | LONG | 34900-6242 | | | CHLB | | C | | | CPA2 | SALABLE | | 1 2 | |
| KEYING OPTION B | BLACK | LIGHT GRAY | LONG | 34900-6241 | | | CHLB | B | | | | CPA2 | SALABLE | | 1 2 | |
| KEYING OPTION A | BLACK | BLACK | LONG | 34900-6240 | | | CHLB | A | | | | CPA2 | SALABLE | | 1 2 | |
| KEYING OPTION D | YELLOW | STONE GRAY | LONG | 34900-6213 | CHLY | | | | | D | | CPA2 | SALABLE | | 1 2 | |
| KEYING OPTION C | YELLOW | DARK GRAY | LONG | 34900-6212 | CHLY | | | | C | | | CPA2 | SALABLE | | 1 2 | |
| KEYING OPTION B | YELLOW | LIGHT GRAY | LONG | 34900-6211 | CHLY | | | B | | | | CPA2 | SALABLE | | 1 2 | |
| KEYING OPTION A | YELLOW | BLACK | LONG | 34900-6210 | CHLY | | | A | | | | CPA2 | SALABLE | | 1 2 | |
| KEYING OPTION D | BLACK | STONE GRAY | MID LENGTH | 34900-6130 | | | CHMB | | | D | CPA1 | | SALABLE | | 1 2 3 | |
| KEYING OPTION C | BLACK | DARK GRAY | MID LENGTH | 34900-6121 | | | CHMB | | C | CPA1 | | | SALABLE | | 1 2 3 | |
| KEYING OPTION B | BLACK | LIGHT GRAY | MID LENGTH | 34900-6128 | | | CHMB | B | | CPA1 | | | SALABLE | | 1 2 3 | |
| KEYING OPTION A | BLACK | BLACK | MID LENGTH | 34900-6119 | | | CHMB | A | | CPA1 | | | SALABLE | | 1 2 3 | |
| KEYING OPTION D | BLACK | STONE GARY | LONG | 34900-6143 | | | CHLB | | | D | CPA1 | | SALABLE | | 1 2 | |
| KEYING OPTION C | BLACK | DARK GRAY | LONG | 34900-6142 | | | CHLB | | C | CPA1 | | | SALABLE | | 1 2 | |
| KEYING OPTION B | BLACK | LIGHT GRAY | LONG | 34900-6141 | | | CHLB | B | | CPA1 | | | SALABLE | | 1 2 | |
| KEYING OPTION A | BLACK | BLACK | LONG | 34900-6140 | | | CHLB | A | | CPA1 | | | SALABLE | | 1 2 | |
| KEYING OPTION D | YELLOW | STONE GRAY | LONG | 34900-6113 | CHLY | | | | | D | CPA1 | | SALABLE | | 1 2 | |
| KEYING OPTION C | YELLOW | DARK GRAY | LONG | 34900-6112 | CHLY | | | | C | CPA1 | | | SALABLE | | 1 2 | |
| KEYING OPTION B | YELLOW | LIGHT GRAY | LONG | 34900-6111 | CHLY | | | B | | CPA1 | | | SALABLE | | 1 2 | |
| KEYING OPTION A | YELLOW | BLACK | LONG | 34900-6110 | CHLY | | | A | | CPA1 | | | SALABLE | | 1 2 | |
| ASSEMBLY DESCRIPTION | CONNECTOR HOUSING COLOR | TERMINAL CAVITY COLOR | OUTER HOUSING SHROUD LENGTH | ASSEMBLY PART NUMBER | | | | A | B | C | D | CPA1 | CPA2 | STATUS | COMMENTS | DESIGNED TO MATE WITH DEVICE CONNECTION |

| RING SEAL | COLOR | MATERIAL | COMMENTS |
|----------------------------------|------------|----------------|------------------------------------|
| ISL | NATURAL | SPS/NYLON GF20 | |
| CPA2 | RED | PBT GF30 | |
| CPA1 | RED | PBT GF30 | |
| TERMINAL HOUSING KEYING OPTION D | STONE GRAY | SPS/NYLON GF20 | |
| TERMINAL HOUSING KEYING OPTION C | DARK GRAY | SPS/NYLON GF20 | |
| TERMINAL HOUSING KEYING OPTION B | LIGHT GRAY | SPS/NYLON GF20 | |
| TERMINAL HOUSING KEYING OPTION A | BLACK | SPS/NYLON GF20 | |
| CONNECTOR HOUSING MID LENGTH | BLACK | SPS/NYLON GF20 | UPDATED LATCH |
| CONNECTOR HOUSING LONG | BLUE | SPS/NYLON GF20 | UPDATED LATCH |
| CONNECTOR HOUSING LONG | BLACK | SPS/NYLON GF20 | UPDATED LATCH |
| CONNECTOR HOUSING LONG | YELLOW | SPS/NYLON GF20 | UPDATED LATCH |
| WIRE DRESS COVER STRAIGHT | BLACK | PA66 | SOLD SEPARATELY SEE SD-160091-0001 |
| WIRE DRESS COVER LEFT | BLACK | PA66 | |
| WIRE DRESS COVER RIGHT | BLACK | PA66 | |
| DESCRIPTION | COLOR | MATERIAL | COMMENTS |

BOM / APPLICABLE COMPONENTS TABLE

| ABREVIATION | COMPONENT |
|-------------|---|
| CHLY | CONNECTOR HOUSING LONG YELLOW |
| CHLB | CONNECTOR HOUSING LONG BLACK |
| CHC | CONNECTOR HOUSING BLUE(CYAN) |
| CHMB | CONNECTOR HOUSING MEDIUM BLACK |
| A | TERMINAL HOUSING KEY A |
| B | TERMINAL HOUSING KEY B |
| C | TERMINAL HOUSING KEY C |
| D | TERMINAL HOUSING KEY D |
| CPA1 | CPA VERSION 1 |
| CPA2 | CPA VERSION 2 |
| ISL | ISL |
| RING SEAL | RING SEAL |
| 1 | USCAR INTERFACE 120-S-006-1-Z02 SEE NOTE 1f FOR WEBSITE |
| 2 | MOLEX INLINE BLADE CONNECTOR SD-34899-6001 |
| 3 | USCAR INTERFACE 120-S-006-1-Z04 SEE NOTE 1f FOR WEBSITE |

| | | | |
|---|--|---|---|
| <p>QUALITY SYMBOLS</p> <p>THIS DRAWING CONTAINS INFORMATION THAT IS PROPRIETARY TO MOLEX ELECTRONIC TECHNOLOGIES, LLC AND SHOULD NOT BE USED WITHOUT WRITTEN PERMISSION</p> <p>ADDED BLUE RESIN PART NUMBERS</p> <p>EC NO: CO-00027295</p> <p>DRWN: Manikya MD</p> <p>CHKD: Abhishek Gajare</p> <p>REV APPR: sandes13</p> | <p>GENERAL TOLERANCES (UNLESS SPECIFIED)</p> <p>ANGULAR TOL ± 3 °</p> <p>4 PLACES ± 0</p> <p>3 PLACES ± 0</p> <p>2 PLACES ± 0.1</p> <p>1 PLACE ± 0.2</p> <p>0 PLACES ± 0.5</p> <p>DRAFT WHERE APPLICABLE MUST REMAIN WITHIN DIMENSIONS</p> | <p>DIMENSION UNITS: MM</p> <p>SCALE: 2:1</p> <p>DRWN BY: MVANSLAMBROU</p> <p>DATE: 2012/05/03</p> <p>CHKD BY: DATE</p> <p>APPR BY: GGA</p> <p>DATE: 2012/12/13</p> <p>DRAWING SIZE: D</p> <p>THIRD ANGLE PROJECTION</p> | <p>molex</p> <p>1.2MM 1X4, 1X6 RECPT. SEALED ASSEMBLY CABLE SEAL 626759 - CHANGED CPA2 TO CPA2. ROLLING CHANGE AT GM.</p> <p>G Customer Product Dwg</p> <p>SERIES: 34900</p> <p>MATERIAL NUMBER: SEE TABLE</p> <p>CUSTOMER: GENERAL MARKET</p> <p>DOCUMENT NUMBER: SD-34900-6001</p> <p>DOC TYPE: PSD</p> <p>DOC PART: 001</p> <p>SHEET NUMBER: 6 OF 7</p> |
|---|--|---|---|

OBSELETE PART NUMBERS

| | |
|----------------------|----------|
| 34900-4026 | OBSELETE |
| 34900-4025 | OBSELETE |
| 34900-4024 | OBSELETE |
| 34900-4023 | OBSELETE |
| 34900-4022 | OBSELETE |
| 34900-4021 | OBSELETE |
| 34900-4020 | OBSELETE |
| 34900-4016 | OBSELETE |
| 34900-4015 | OBSELETE |
| 34900-4014 | OBSELETE |
| 34900-4013 | OBSELETE |
| 34900-4012 | OBSELETE |
| 34900-4011 | OBSELETE |
| 34900-4010 | OBSELETE |
| ASSEMBLY PART NUMBER | STATUS |

1X4

| | |
|----------------------|----------|
| 34900-6030 | OBSELETE |
| 34900-6021 | OBSELETE |
| 34900-6028 | OBSELETE |
| 34900-6019 | OBSELETE |
| 34900-6043 | OBSELETE |
| 34900-6042 | OBSELETE |
| 34900-6041 | OBSELETE |
| 34900-6040 | OBSELETE |
| 34900-6013 | OBSELETE |
| 34900-6012 | OBSELETE |
| 34900-6011 | OBSELETE |
| 34900-6010 | OBSELETE |
| ASSEMBLY PART NUMBER | STATUS |

1X6

| | | | | | | | | | |
|---|-------|--|--|--------|----------------|--------------|--|----------|--|
| THIS DRAWING CONTAINS INFORMATION THAT IS PROPRIETARY TO MOLEX ELECTRONIC TECHNOLOGIES, LLC AND SHOULD NOT BE USED WITHOUT WRITTEN PERMISSION | | | | | | | | | |
| DIMENSION UNITS | SCALE | Material: | molex | | | | 1.2MM 1X4, 1X6 RECPT. SEALED ASSEMBLY CABLE SEAL 626759 - CHANGED CPA2 TO CPA2. ROLLING CHANGE AT GM. | | |
| MM | 1:1 | Heat treat: | | | | | | | |
| GENERAL TOLERANCES (UNLESS SPECIFIED) | | Finish: | CURRENT REV DESC: ADDED BLUE RESIN PART NUMBERS | | | | | | |
| ANGULAR TOL ± 3° | | | | | | | | | |
| 4 PLACES | ± 0 | | PRODUCT CUSTOMER DRAWING | | | | | | |
| 3 PLACES | ± 0 | | | | | | | | |
| 2 PLACES | ± 0.1 | EC NO: CO-000027295 | DOCUMENT NUMBER | | | | | | |
| 1 PLACE | ± 0.2 | DRWN: Manikya MD 25-Feb-2025 | | | | | | | |
| 0 PLACES | ± 0.5 | CHK'D: Abhishek Gajare 02-Jul-2025 | SD-34900-6001 | | | DOC TYPE | DOC PART | REVISION | |
| TOOL NUMBER | | APPR: sandes13 02-Jul-2025 | GENERAL MARKET | | | SHEET NUMBER | | | |
| | | ORIG DRWN BY: MVANSLAMBROU 03-May-2012 | 7 OF 7 | | | | | | |
| | | THIRD ANGLE PROJECTION | DRAWING | SERIES | CUSTOMER | | | | |
| | | | D-SIZE | 34900 | GENERAL MARKET | | | | |