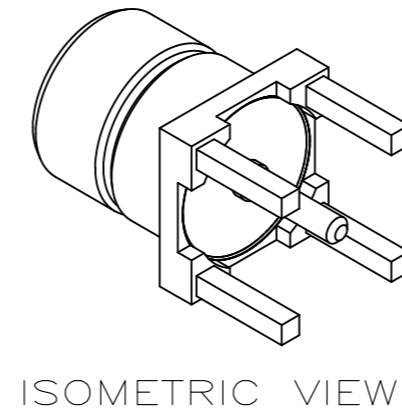
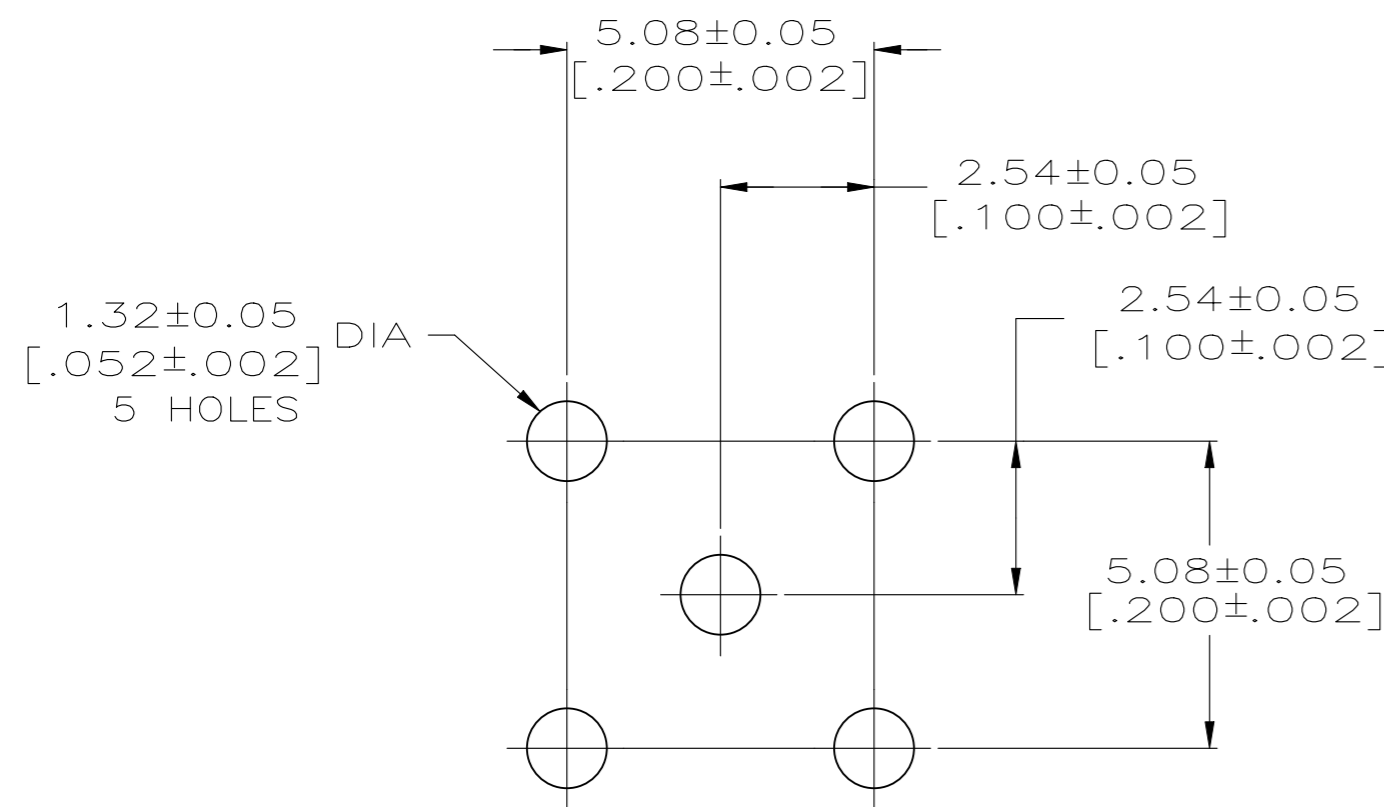
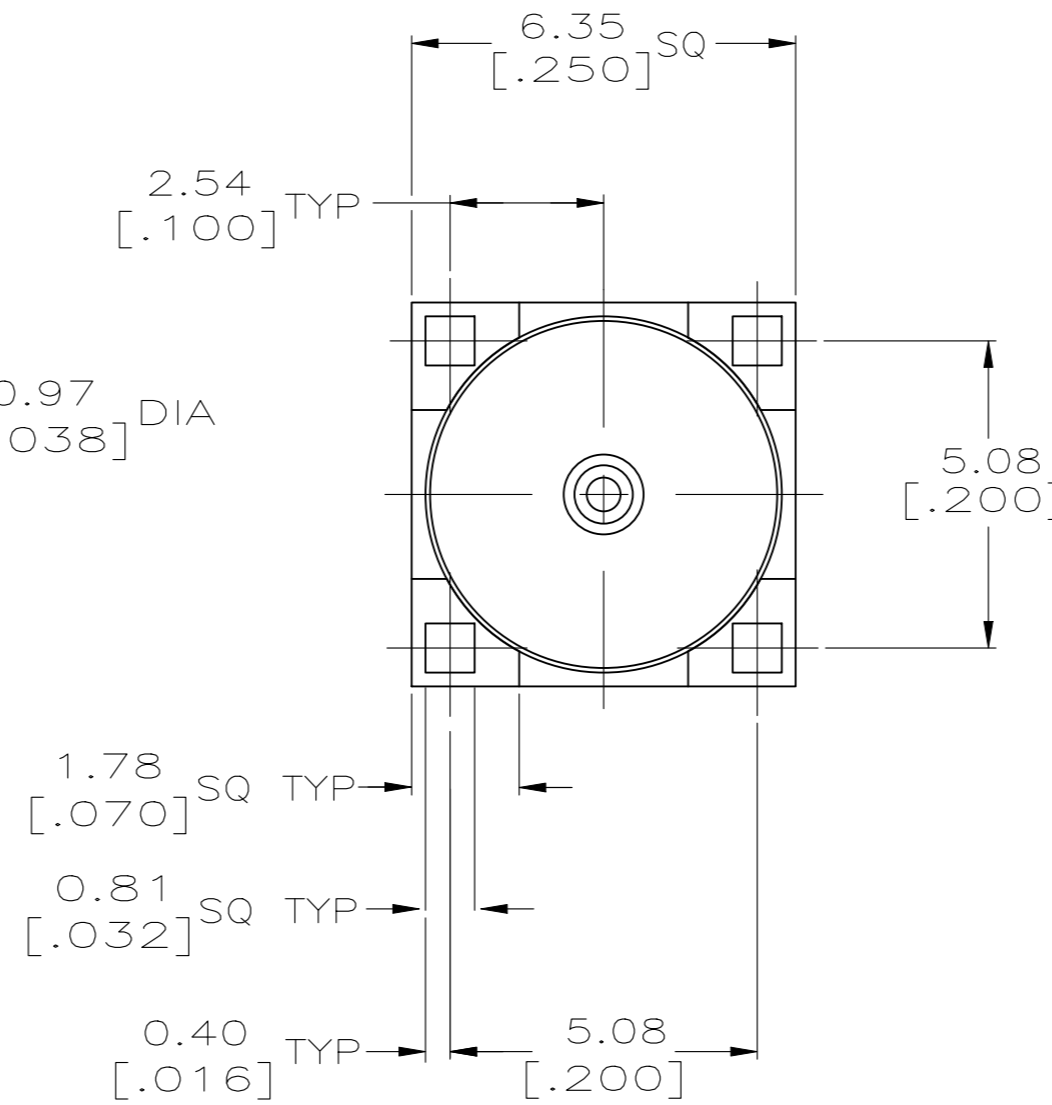
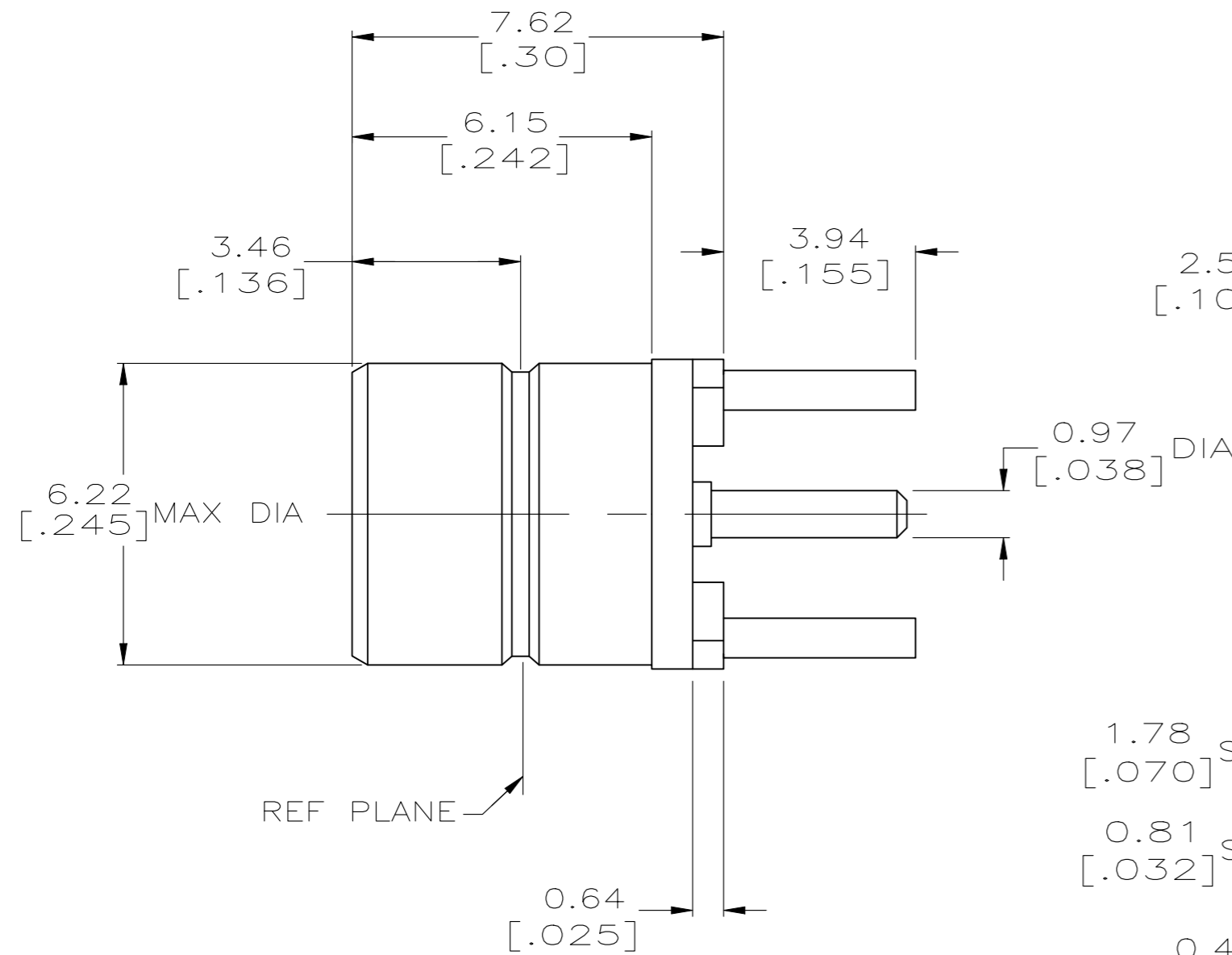


REVISIONS					
P	LTR	DESCRIPTION	DATE	DWN	APVD
E2		REVISED AS PER ECN-25-358965	11DEC2025	YS	WZ



- 1 BRASS PER ASTM-B-453
- 2 PTFE PER ASTM-D-1710
- 3 GOLD PLATE PER MIL-G-45204 OVER NICKEL PLATE PER QQ-N-290.
- 4 NICKEL PLATE PER QQ-N-290 OVER COPPER PER MIL-C-14550.
- 5 GOLD PLATE PER MIL-G-45204 .000050 MIN THK OVER NICKEL PLATE PER QQ-N-290.
- 6 TIN PLATE PER ASTM B 545.
- 7 TIN PLATE PER ASTM-B-545 .000050 MIN THK OVER NICKEL PLATE PER QQ-N-290



NOTE: AN INDIVIDUAL DRAWING SHEET HAS BEEN ALLOCATED FOR THE PART NUMBER 41424-1

SUPERSEDED BY 414244-1	—	3	7	9-414244-0
SUPERSEDED BY 414244-4	—	3	6	414244-4
	—	5	5	414244-3
	—	3	4	414244-2
	DIELECTRIC 2	CONTACT 1	BODY 1	ASSY NO
	FINISH			

THIS DRAWING IS A CONTROLLED DOCUMENT.		DWN K. RIELY 1/6/92	TE Connectivity	
DIMENSIONS: INCHES		CHK G. MICHAEL 1/6/92	NAME	
TOLERANCES UNLESS OTHERWISE SPECIFIED:		APVD K. HEILIG 01-07-92	JACK,RCPT,STR,SMB/PCB	
0 PLC ± -		PRODUCT SPEC	SIZE	CAGE CODE
1 PLC ± -		APPLICATION SPEC	A2	00779
2 PLC ± 0.25[.01]			DRAWING NO	RESTRICTED TO
3 PLC ± 0.130[.005]			C=414244	—
4 PLC ± -			SCALE	SHEET
ANGLES ± -		WEIGHT	8:1	1 OF 1
MATERIAL SEE TABLE	FINISH SEE TABLE	CUSTOMER DRAWING	REV	E2